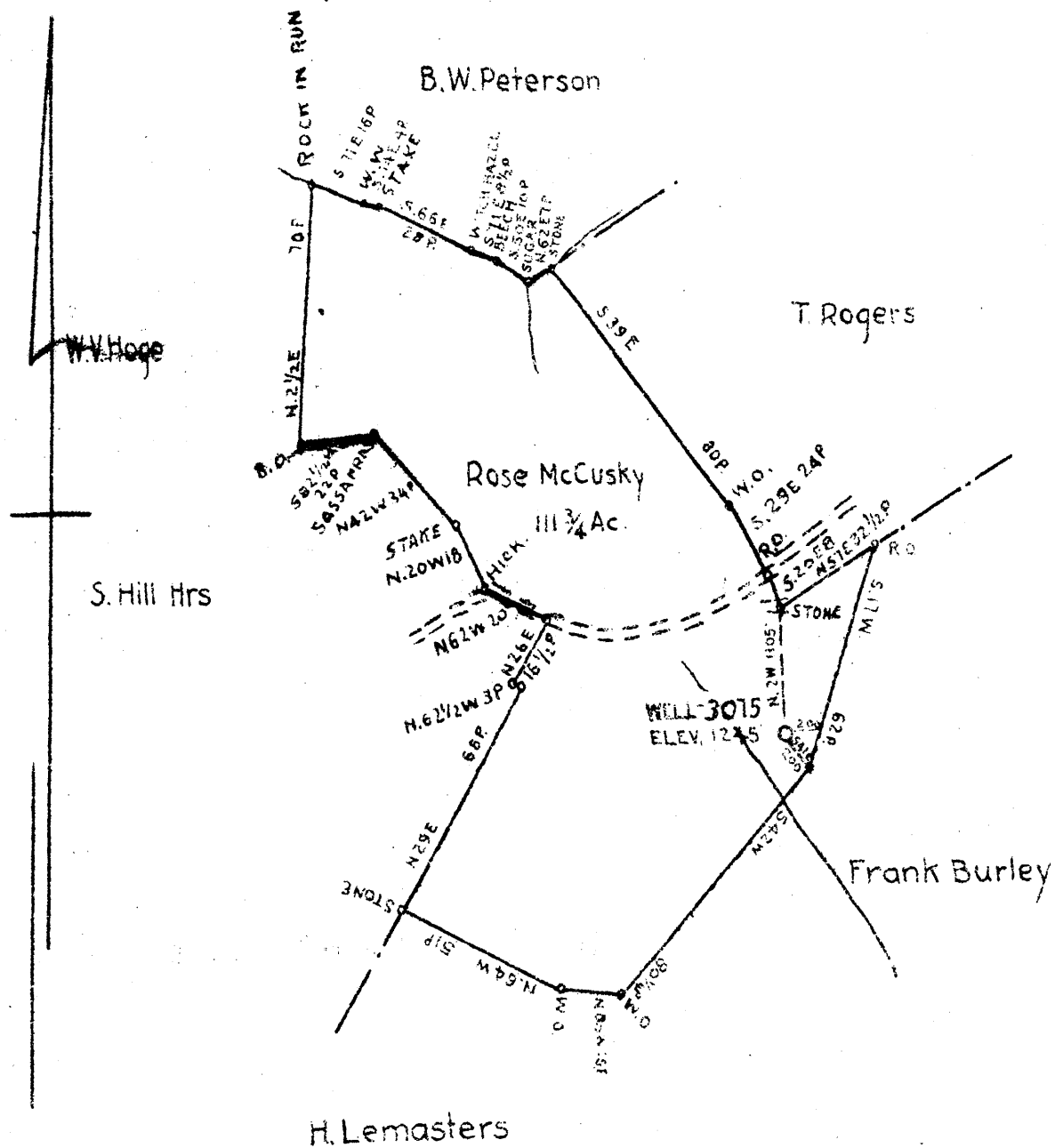


1.38
3.21



COAL OWNED BY Belton Fuel Co. care of A.W. Coffom
Uniontown Pa.

NEW LOCATION
 DRILL DEEPER
 ABANDONMENT

COMPANY The Manufacturers Light and Heat Co.
 ADDRESS 800 Union Trust Bldg. Pittsburgh P
 FARM Rose McCusky
 TRACT ACRES 111.75 LEASE NO 6012
 WELL FARM NO 1 SERIAL NO 3075
 ELEVATION (SPIRIT LEVEL) 1245'
 QUADRANGLE Littleton
 COUNTY Marshall DISTRICT Liberty
 ENGINEER *J. H. ...*
 REGISTRAR'S RECORDING NO.
 FILE NO DRAWING NO Y-11-212
 DATE January 21 1945 SCALE 1" = 800'

STATE OF WEST VIRGINIA
 DEPARTMENT OF MINES
 OIL AND GAS DIVISION
 CHARLESTON

WELL LOCATION MAP

FILE NO. MARS-236-A

THIS LOCATION OF WELL IS BASED UPON THE
 ORIGINAL MAPS IN FILE 1 TO 62,500. LITTLE DE
 LINES BEING REPRESENTED BY BORDER LINES.

QUARTER ONE INCH. PAPER IS FOR USE IN
 RECORDS.

(442)



281

STATE OF WEST VIRGINIA
DEPARTMENT OF MINES
OIL AND GAS DIVISION

WELL RECORD

Permit No. 236 A
Drilled in 1925

Oil or Gas Well Gas
(KIND)

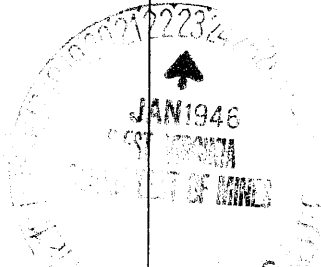
Company The Manufacturers Light & Heat Co.
Address 800 Union Trust Bldg., Pittsburgh, Pa.
Farm Rosa McCuskey Acres 112
Location (Rose) (flat)
Well No. 3075 Elev. 1245 ft.
District Liberty County Marshall
The surface of tract is owned in fee by H. P. Evans
Address Keystone, W. Va.
Mineral rights are owned by The Mfrs Light & Heat Co.,
800 Union Trust Bldg. Address Pittsburgh, Pa.
Drilling commenced 12/23/25
Drilling completed 2/12/26
Date Shot _____ From _____ To _____
With _____

Casing and Tubing	Used in Drilling	Left in Well	Packers
Size			Kind of Packer
16			
13			
10			Size of
8 1/4	<u>1480</u>	<u>1480'</u>	
6 1/2	<u>2228'</u>	<u>2228'</u>	Depth set
5 3/16	<u>3057</u>	<u>-</u>	
3			Perf. top
2			Perf. bottom
Liners Used			Perf. top
			Perf. bottom

Open Flow _____ /10ths Water in _____ Inch
_____ /10ths Merc. in _____ Inch
Volume _____ Cu. Ft.
Rock Pressure _____ lbs _____ hrs.
Oil _____ bbls., 1st 24 hrs.
Fresh water 1060 feet _____ feet
Salt water _____ feet _____ feet

CASING CEMENTED _____ SIZE _____ No. Ft. _____ Date _____
COAL WAS ENCOUNTERED AT 755 FEET 60 INCHES
955 FEET 60 INCHES 1060 FEET 96 INCHES
_____ FEET _____ INCHES _____ FEET _____ INCHES

Formation	Color	Hard or Soft	Top	Bottom	Oil, Gas or Water	Depth Found	Remarks
Clay, Slate & Lime			0	755			
Waynesburg Coal			755	760	Little gas		
Slate & Lime			760	955			
Mapletown Coal			955	960	Little gas		
Slate & Lime			960	1060			
Pittsburgh Coal			1060	1068	Little gas		Water at 1060
Slate & Lime			1068	1323			
Red Rock			1323	1365	(Murphy Sand 1175-1190)		
Slate & Lime			1365	1570			
Big Dunkard			1570	1595			
Slate & Lime			1595	1620			
Sand			1620	1645			
Slate			1645	1680			
Sand			1680	1695			
Lime & Slate			1695	1830			
1st Salt Sand			1830	1853	Little gas		at 1842
Slate & Lime			1853	1953			
2nd Salt Sand			1953	2000			
Slate & Lime			2000	2050			
3rd Salt Sand			2050	2082			
Slate & Lime			2082	2115			
Maxon Sand			2115	2130			
Slate & Lime			2130	2200			
Little Lime			2200	2215			
Pencil Cave			2215	2222			
Big Lime			2222	2265			
Big Injun			2265	2525	Gas		2267 and 2310
Slate & Lime			2525	3055			
50-Foot			3055	3075			
Slate & Lime			3075	3098			
Gordon Sand			3098	3131			
Slate, Lime & Shells			3131	3152			
4th Sand			3152	3157			
Slate			3157	3200			
Total depth				3200			



Formation	Color	Hard or Soft	Top	Bottom	Oil, Gas or Water	Depth Found	Remarks

Date January 22nd, 1946

APPROVED THE MANUFACTURERS LIGHT & HEAT COMPANY Owner

By *Paul Cooper*
 (Title) Land Agent.