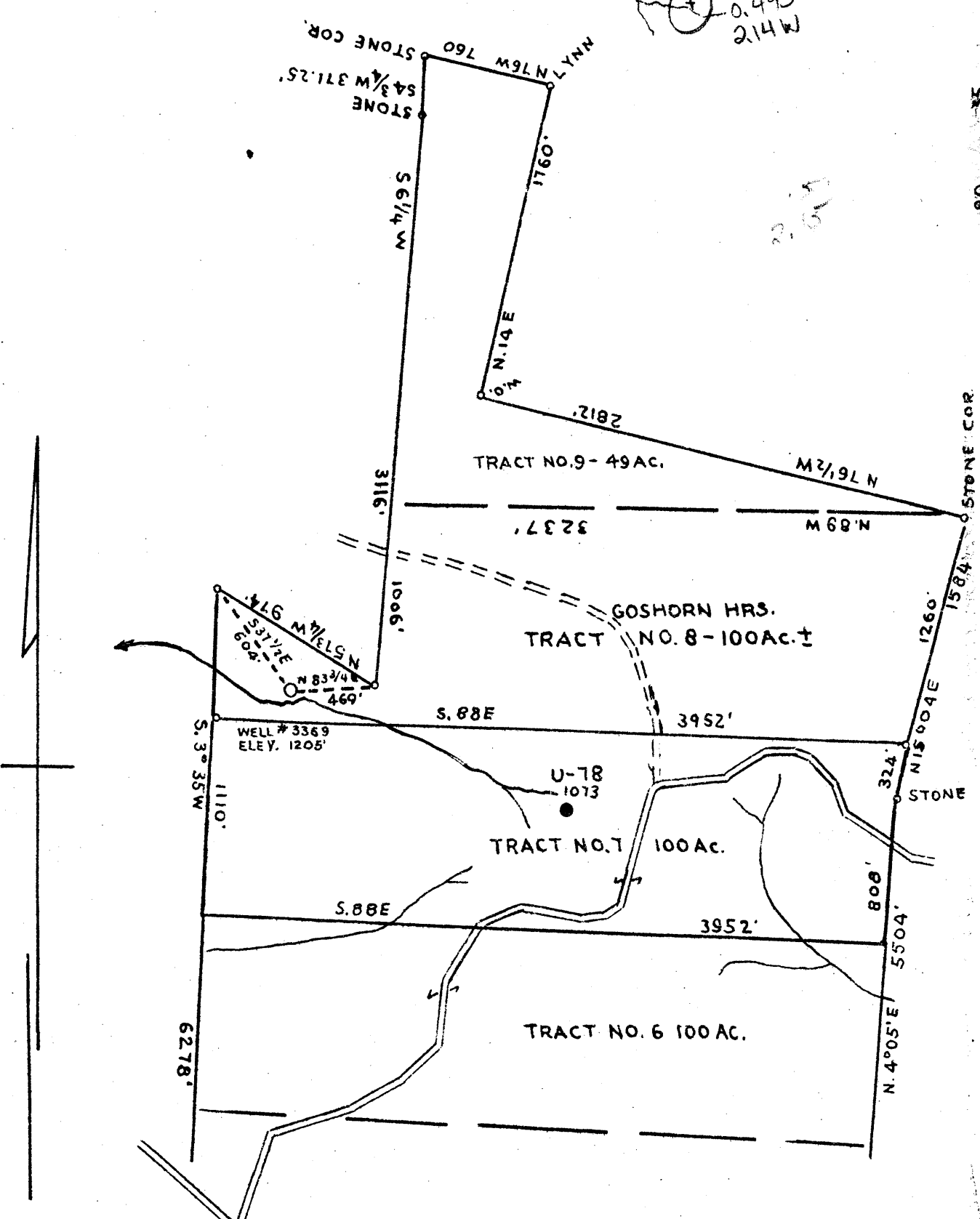


0.495
214W



COAL OWNED BY BELTON FUEL CO. UNIONTOWN PA.

- NEW LOCATION...
- DRILL DEEPER...
- ABANDONMENT...

COMPANY... **THE MANUFACTURERS LIGHT AND HEAT CO.**
 ADDRESS... **800 UNION TRUST BLD'G, PITTSBURGH PA.**
 FARM... **GOSHORN HEIRS. (749 ACRES)**
 TRACT... **8 & 9** ACRES... **149** LEASE NO. **14034-749A**
 WELL (FARM) NO. **1 ON TRACT # 8** SERIAL NO. **3369**
 ELEVATION (SPIRIT LEVEL)... **1205**
 QUADRANGLE **CAMERON SC**
 COUNTY **MARSHALL** DISTRICT **LIBERTY**
 ENGINEER... *J. J. Mercer*
 ENGINEER'S REGISTRATION NO. _____
 FILE NO. **D-16-13** DRAWING NO. **Y-11-257**
 DATE **JUNE 19 1946** SCALE **1" = 800'**

STATE OF WEST VIRGINIA
 DEPARTMENT OF MINES
 OIL AND GAS DIVISION
 CHARLESTON

WELL LOCATION MAP

FILE NO. **MARS-250-A**

○ DENOTES LOCATION OF WELL ON UNITED STATES TOPO GRAPHIC MAPS. SCALE 1 TO 62,500. LATITUDE AND LONGITUDE LINES BEING REPRESENTED BY BORDER LINES AS SHOWN.

--- DENOTES ONE INCH SPACES ON BORDER LINE OF ORIGINAL TRACING.

66 (0)

RHODA A. PARSONS (GOSHORN) NO. 3369 WELL.

Liberty District, Marshall County, W. Va.

By Manufacturers Light & Heat Co.

Completed Aug. 29, 1929.

Record from Mr. Schillhahn Sept. 30, 1939.

	Top.	Bottom.
Pittsburgh Coal (water, 1 bbl./hr.)	860	- 867
Murphy Sand	1005	- 1035
Little Dunkard Sand	1213	- 1267
Big Dunkard Sand	1330	- 1360
Gas Sand	1460	- 1525
1st Salt Sand (hole full water, 1695 and 1800')	1760	- 1810
Little Lime	1830	- 1835
Big Lime	1925	- 1980
Big Injun Sand (show oil, 2065')	1980	- 2210
30' Shells	2580	- 2660
Gordon Stray and Gordon (gas, 2847- 2851')	2843	- 2890
4th Sand	2963	- 2970
Total depth		3143



299

STATE OF WEST VIRGINIA
DEPARTMENT OF MINES
OIL AND GAS DIVISION

WELL RECORD

Permit No. Drilled in June, 1929

Oil or Gas Well Gas
(KIND)

Company THE MANUFACTURERS LIGHT & HEAT COMPANY
 Address 800 Union Trust Bldg., Pittsburgh, Pa.
 Farm Goshorn Heirs Acres 7.49
 Location (waters) _____
 Well No. 2 - 3369 Elev. 1205 ft.
 District Liberty County Marshall
 The surface of tract is owned in fee by Chas P Mead, Trustee
The Ntl Exchange Bank Address Wheeling, WVa.
 Mineral rights are owned by The Mfrs L & H Co.
 Address Pittsburgh, Pa.
 Drilling commenced 6/27/46
 Drilling completed 8/29/46
 Date Shot From _____ To _____
 With _____

Casing and Tubing	Used in Drilling	Left in Well	Packers
Size			
16			Kind of Packer
18	120'	-	Anchor
10	1239' 6"	-	Size of
8 1/2	1795' 2"	1795' 2"	6 5/8 x 4
6 3/4	2111' 7"	2111' 7"	Depth set
5 3/16			2390
4"	3185'	3185'	Perf. top
2			Perf. bottom
Liners Used			Perf. top
			Perf. bottom

Open Flow /10ths Water in _____ Inch
 /10ths Merc. in _____ Inch
 Volume _____ Cu. Ft.
 Rock Pressure 315 lbs 16 hrs.
 Oil _____ bbls., 1st 24 hrs.
 Fresh water 860 - 1695 - feet 1800 feet
 Salt water _____ feet _____ feet

CASING CEMENTED _____ SIZE _____ No. Ft. _____ Date _____
 COAL WAS ENCOUNTERED AT 515 FEET 60 INCHES
580 FEET 60 INCHES 760 FEET 60 INCHES
860 FEET 84 INCHES 1525 FEET 60 INCHES

Formation	Color	Hard or Soft	Top	Bottom	Oil, Gas or Water	Depth Found	Remarks
Soil, Slaty & Lime			0	539			
Coal			515	520			
Bluff Sand			520	580			
Waynesburg Coal			580	585			
Slate & Lime			585	760			
Mapletown Coal			760	765			
Lime & Slate			765	860			
Pittsburgh Coal			860	867			
Slate & Lime			867	925			
Red Rock			925	935			
Lime			935	975			
Red Rock			975	995			
Slate & Lime			995	1005			
Murphy Sand			1005	1035			
Slate			1035	1040			
Red Rock			1040	1074			
Slate & Lime			1074	1170			
Sand			1170	1210			
Red Rock			1210	1243			
Little Dunkard			1243	1267			
Slate & Lime			1267	1330			
Big Dunkard			1330	1360			
Slate & Lime			1360	1460			
Gas Sand			1460	1525			
Coal			1525	1530			
Slate			1530	1654			
First Salt Sand			1654	1700			
Slate			1700	1760			
Second Salt Sand			1760	1810			
Slate & Lime			1810	1925			
Big Lime			1925	1980			
Big Injun			1980	2210			Show of oil at 2065
Slate & Lime			2210	2370			
Sand			2370	2420			
Slate			2420	2580			
30-Foot Shells			2580	2660			
Pink Rock			2660	2705			



Formation	Color	Hard or Soft	Top	Bottom	Oil, Gas or Water	Depth Found	Remarks
Slate, Pink Rock & Shells			2705	2843			
Gordon Stray & Gordon			2843	2890	Gas at 2847 to 2851		
Slate & Lime			2890	2955 2963			
lth Sand			2963	2970			
Sand Shells			2970	2995			
Slate			2995	3143			
Total depth				3143			

Date May 21st, 1946

APPROVED THE MANUFACTURERS LIGHT & HEAT COMPANY, Owner

By Burt Steaper
(Title) Land Agent.