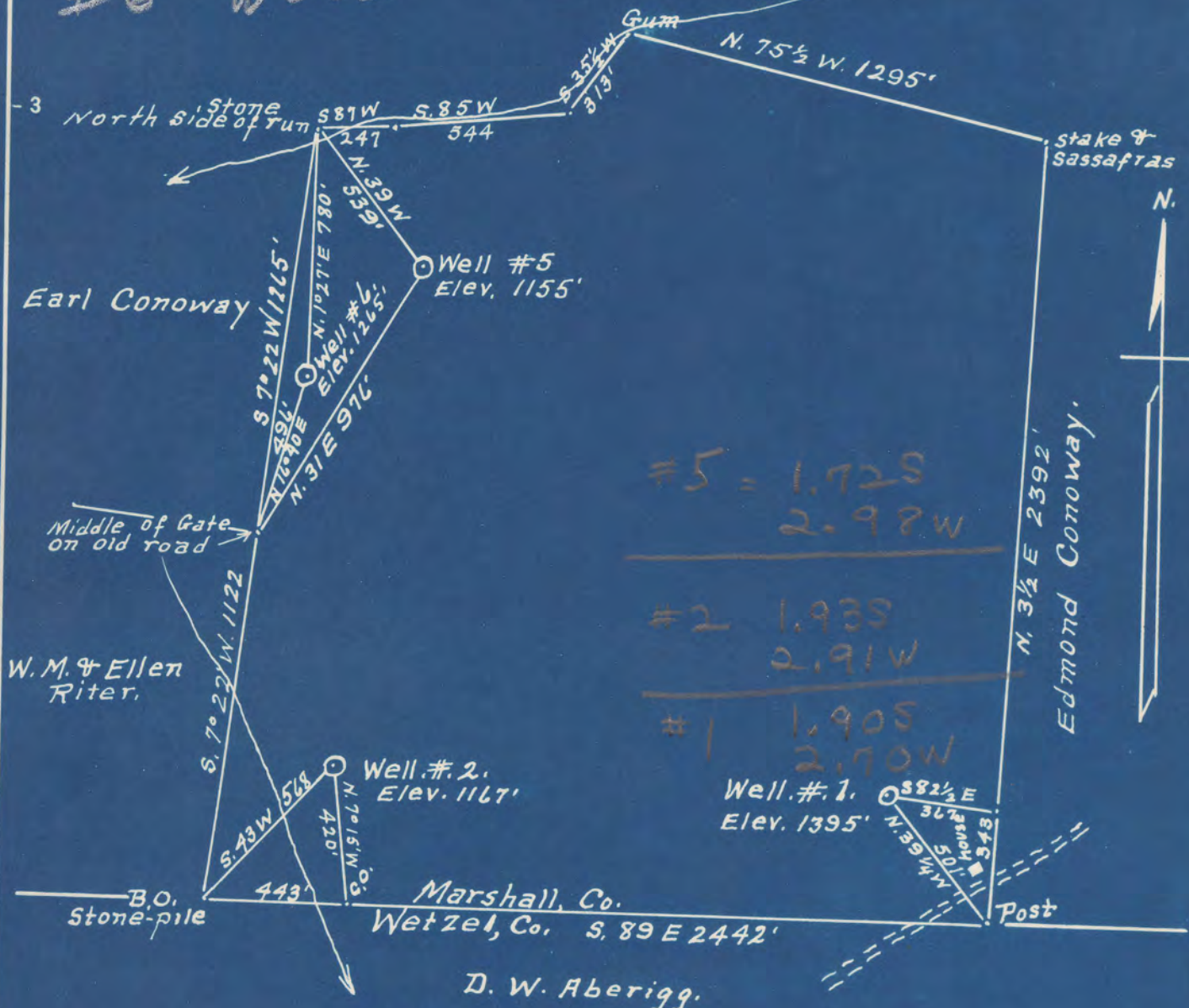


Latitude 39° 45'

Longitude 80° 30'

0	309-A	S 1.91
	#1	W 2.73
1	310-A	S 1.94
	#2	W 2.95
	311-A	S 1.72
	#5	W 2.82
2	312-A	S 1.75
	#6	W 3.02



#5 = 1.72 S
2.98 W

#2 1.93 S
2.91 W

#1 1.90 S
2.70 W

Surface = D.W. Keller, Woodruff, WVa.
Coal = M.A. Hanna Coal Co.
St. Clairsville, Ohio.

- New Location...
- Drill Deeper...
- Abandonment...

Company R.C. Snyder.
 Address Cameron, WVa
 Farm D.W. Keller
 Tract 1 Acres 146 Lease No. _____
 Well (Farm) No. S 7 6 Serial No. 1 = 2823 5 = 2998
2 = 2863 6 = 3080
 Elevation (Spirit Level) Shown above.
 Quadrangle Littleton
 County Marshall District Liberty
 Engineer A.L. Headley
 Engineer's Registration No. 2021
 File No. _____ Drawing No. _____
 Date 5-20-1950 Scale 1" = 500'

STATE OF WEST VIRGINIA
 DEPARTMENT OF MINES
 OIL AND GAS DIVISION
 CHARLESTON

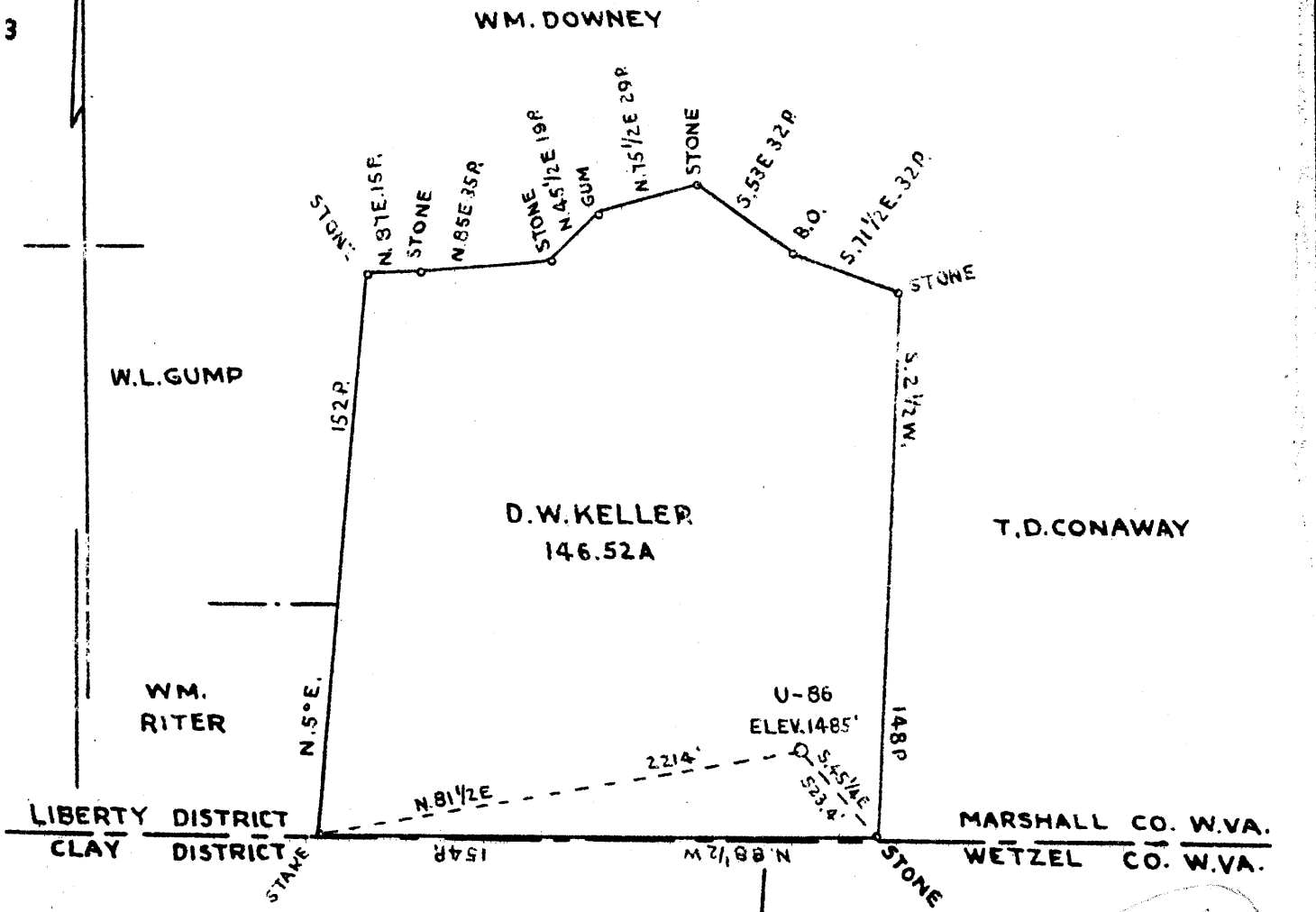
WELL LOCATION MAP

FILE NO. MARS-309-A-#1 CANCELLED

- MARS-312-A-#6
- MARS-310-A-#2
- MARS-311-A-#5
- + Denotes location of well on United States Topographic Maps, scale 1 to 62,500, latitude and longitude lines being represented by border lines as shown.
- Denotes one inch spaces on border line of original tracing.

0 1 2 3 Latitude 39° 45'

1
2
3 Longitude 80° 30'



COAL OWNED BY THE STATE OF WEST VIRGINIA.

1.965
2.74W

1.94S
2.74W

New Location:
 Drill Deeper:
 Abandonment:

Company UNION GASOLINE AND OIL CORPORATION
 Address WASHINGTON TRUST BLDG. WASHINGTON PA.
 Farm D.W.KELLER
 Tract Acres 146.52 Lease No. 8996
 Well (Farm) No. 1 Serial No. U-86
 Elevation (Spirit Level) 1485'
 Quadrangle LITTLETON NE 1/4
 County MARSHALL District LIBERTY
 Engineer *G. Mercer*
 Engineer's Registration No.
 File No Drawing No Y-10-929
 Date JULY-27-1943 Scale 1" = 800'

STATE OF WEST VIRGINIA
 DEPARTMENT OF MINES
 OIL AND GAS DIVISION
 CHARLESTON

WELL LOCATION MAP
 File No. MARS-196-A

+ Denotes location of well on United States Topographic Maps, scale 1 to 62,500, latitude and longitude lines being represented by border lines as shown.

-- Denotes one inch spaces on border line of original tracing



STATE OF WEST VIRGINIA
DEPARTMENT OF MINES
OIL AND GAS DIVISION

358

WELL RECORD

Permit No. MARS-389-A Oil or Gas Well Oil
(KIND)

Company R. C. Snyder
Address Cameron, W. Va.
Farm D. W. Keller Acres 147
Location (waters) _____
Well No. 1 Elev. 1395
District Liberty County Marshall
The surface of tract is owned in fee by D. W. Keller
Address Woodruff, W. Va.
Mineral rights are owned by M. A. Hanna Coal
Company Address St. Clairsville, Ohio
Drilling commenced June 1, 1923
Drilling completed June 23, 1923
Date Shot June 16, 1923 From 3345' To 3350'
With 10 qts. nitroglycerine
Open Flow /10ths Water in _____ Inch
/10ths Merc. in _____ Inch
Volume _____ Cu. Ft.
Rock Pressure _____ lbs. _____ hrs.
Oil 30 bbls., 1st 24 hrs.
Fresh water 0 feet _____ feet
Salt water 0 feet _____ feet

Casing and Tubing	Used in Drilling	Left in Well	Packers
Size			Kind of Packer
16			
13			
10	314'	314'	Size of <u>0</u>
8 1/2	1709'	1709'	Depth set <u>0</u>
6 3/4	2455'	2455'	
5 1/2	3276'	3276'	Perf. top <u>0</u>
3			Perf. bottom <u>0</u>
2	3354'	3354'	Perf. top <u>0</u>
Liners Used			Perf. bottom <u>0</u>

CASING CEMENTED 0 SIZE _____ No. Ft. _____ Date _____
COAL WAS ENCOUNTERED AT 1270' FEET _____ INCHES
_____ FEET _____ INCHES _____ FEET _____ INCHES
_____ FEET _____ INCHES _____ FEET _____ INCHES

Formation	Color	Hard or Soft	Top	Bottom	Oil, Gas or Water	Depth Found	Remarks
gh. Coal	Black	Soft	1270'	1274'			
ed Rock	Red	Soft	1306'	1311'			
ig Dunkard	Gray	Hard	1775'	1820'			
alt Sand	White	Hard	2051'	2065'			
ig Injun	Gray	Hard	2500'	2570'			
ifty Foot Sand	Gray	Hard	3197'	3309'			
rdon Sand	Gray	Hard	3331'	3354'			



Liberty District, Marshall County, W. Va.

By The Union Gasoline & Oil Corporation, 800 Union Trust Bldg.,
Pittsburgh, Pa. Drilled in 1923 by The Manufacturers Light &
Heat Co., their well No. 2823.

Abandoned under permit Mars-196-A.

On 147 acres.

Elevation, 1485' L.

Surface owned by D. W. Kellar, R. D. 1, Woodruff, W. Va., and minerals
by Union Gasoline & Oil Corp., 800 Union Trust Bldg., Pittsburgh, Pa.

Drilling commenced June 1, 1923; completed (to 2055') June 23, 1923;
deepening commenced May 6, 1925; completed, June 1, 1925.

10" casing, 314' 2"; 8 1/4", 1709' 4"; 6 3/8", 2455'; 5 3/8", 3276'; 4" tubing,
2045' 5".

Coal was encountered at 885-887, 944-947, 1160-1164, and 1270-1274'.

Oil well. Abandonment reported to Dept. of Mines July 28, 1943.

Record to RCT from Mrs. Griffith Nov. 10, 1943.

	Top.	Bottom.
Clay, lime, slate, shells	0	225
Sand	225	252
Slate and lime	252	280
Sand	280	311
Slate, lime, shells	311	485
Red rock	485	510
Lime	510	548
Slate, shells, lime	548	580
Sand	580	620
Slate and shells	620	740
Sand	740	750
Lime	750	885
Coal	885	887
Sand	887	944
Waynesburg Coal	944	947
Slate and lime	947	1160
Coal, Mapletown (Sewikaley)	1160	1164
Slate and lime	1164	1270
Pittsburgh Coal	1270	1274
Lime	1274	1306
Red rock	1306	1311
Lime, slate, shells	1311	1340
Sand	1340	1365
Lime	1365	1378
Sand	1378	1393
Shale and lime	1393	1425
Sand	1425	1445
Red rock	1445	1472
Sand	1472	1480
Slate and lime	1480	1685
Sand	1685	1713
Lime shells	1713	1762
Slate	1762	1775
Big Dunkard Sand	1775	1820
Coal	1820	1823
Lime	1823	1871
Slate	1871	1924
Sand	1924	1938
Lime	1938	1953

D. W. KELLAR NO. 1 (86) WELL (Continued).

	Top.	Bottom.
Broken sand	1953	- 1980
Sand	1980	- 1992
Shale	1992	- 2011
Sand	2011	- 2019
Slate and shells (gas, 2038-2055')	2019	- 2031
Lime and slate	2031	- 2055
DRILLED DEEPER MAY 6, 1925:		
First Salt Sand	2055	- 2065
Slate	2065	- 2130
Slate, white	2130	- 2420
Lime	2420	- 2435
Pencil Cave	2435	- 2440
Big lime	2440	- 2500
Big Lagoon Sand	2500	- 2750
Slate	2750	- 2800
Shells	2800	- 2843
Slate	2843	- 2874
Shells	2874	- 2910
Slate	2910	- 2950
Shells	2950	- 2970
Slate	2970	- 3000
Shells	3000	- 3200
Pink rock	3200	- 3205
Slate	3205	- 3297
50-Foot Sand	3297	- 3309
Garden Sand (oil at 3344')	3331	- 3354
Total depth		3354

STATE OF WEST VIRGINIA
DEPARTMENT OF MINES
OIL AND GAS DIVISION

242

WELL RECORD

Permit No. 195-A Drilled in 1923
by The Manufacturers Light & Heat Co. (Their well 2823)

Oil or Gas Well Oil
(KIND)

Company Union Gasoline & Oil Corporation
Address 800 Union Trust Bldg., Pittsburgh, Pa.
Farm D. W. Kellar Acres 14.7
Location (waters).....
Well No. 1 - 86 Elev. 1485
District Liberty County Marshall
The surface of tract is owned in fee by D. W. Kellar
R. D. 1 Address Woodruff, WVa.
Mineral rights are owned by Union Gasoline & Oil Corp
800 Union Trust Bldg. Address Pittsburgh Pa.
Drilling commenced 6/1/23 5/6/25
Drilling completed 6/23/23 6/1/25
Date Shot From To
With

Casing and Tubing	Used in Drilling	Left in Well	Packers
Size			
16			Kind of Packer.....
13			?
10	314' 2"	314' 2"	Size of.....
8 1/4	1709' 4"	1709' 4"	Depth set.....
6 5/8		2455	
5 3/16		3276	
xx 4"		2045' 5"	Perf. top.....
2			Perf. bottom.....
Liners Used.....			Perf. top.....
			Perf. bottom.....

Open Flow /10ths Water in..... Inch
/10ths Merc. in..... Inch
Volume..... Cu. Ft.
Rock Pressure..... lbs..... hrs.
Oil..... bbls., 1st 24 hrs.
Fresh water..... feet..... feet
Salt water..... feet..... feet

CASING CEMENTED..... SIZE..... No. Ft..... Date
COAL WAS ENCOUNTERED AT 885 FEET 24 INCHES
914 FEET 36 INCHES
1160 FEET 48 INCHES 1270 FEET 48 INCHES
..... FEET..... INCHES..... FEET..... INCHES

Formation	Color	Hard or Soft	Top	Bottom	Oil, Gas or Water	Depth Found	Remarks
Clky, Lime, Slate, Shells			0	225			
Sand			225	252			
Slate & Lime			252	280			
Sand			280	311			
Slate, Lime, Shells			311	485			
Red Rock			485	510			
Lime			510	548			
Slate, Shells, Lime			548	580			
Sand			580	620			
Slate & Shells			620	740			
Sand			740	750			
Lime			750	885			
Coal			885	887			
Sand			887	944			
Waynesburg Coal			944	947			
Slate & Lime			947	1160			
Coal (Mapletown)			1160	1164			
Slate & Lime			1164	1270			
Pittsburgh Coal			1270	1274			
Lime			1274	1306			
Red Rock			1306	1311			
Lime, Slate, Shells			1311	1340			
Sand			1340	1365			
Lime			1365	1378			
Sand			1378	1393			
Shale & Lime			1393	1425			
Sand			1425	1445			
Red Rock			1445	1472			
Sand			1472	1480			
Slate & Lime			1480	1685			
Sand			1685	1713			
Lime Shells			1713	1762			
Slate			1762	1775			
Big Dunkard			1775	1820			
Coal			1820	1823			
Lime			1823	1871			
Slate			1871	1924			
Sand			1924	1938			
Lime			1938	1953			
Broken Sand			1953	1980			
Sand			1980	1992			



Formation	Color	Hard or Soft	Top	Bottom	Oil, Gas or Water	Depth Found	Remarks
Shale			1992	2011			
Sand			2011	2019			
Slate & Shells			2019	2031	Gas 2038 to	2055	
Lime & Slate			2031	2055			
<u>DRILLING DEEPER</u>			MAY 6, 1925				
First Salt Sand			2055	2065			
Slate			2065	2130			
Slate, white			2130	2120			
Lime			2120	2135			
Pencil Cave			2135	2140			
Big Lime			2140	2500			
Big Injun			2500	2750			
Slate			2750	2800			
Shells			2800	2813			
Slate			2813	2874			
Shells			2874	2910			
Slate			2910	2950			
Shells			2950	2970			
Slate			2970	3000			
Shells			3000	3200			
Pink Rock			3200	3205			
Slate			3205	3297			
50-Foot			3297	3309			
?							
Gordon Sand			3331	3354	Oil at	3344	
Total depth				3354			

Date July 28th, 1943

APPROVED UNION GASOLINE & OIL CORPORATION, Owner

By Harry H. Fowler
(Title) Land Agent