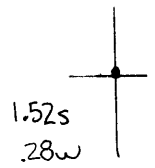


Latitude

Longitude



Topo Location

7.5' Loc. \_\_\_\_\_ 15' Loc. \_\_\_\_\_  
 \_\_\_\_\_ (calc.) \_\_\_\_\_

Company \_\_\_\_\_

Farm Ida F Devimney #2

15' Quad \_\_\_\_\_  
(sec.)

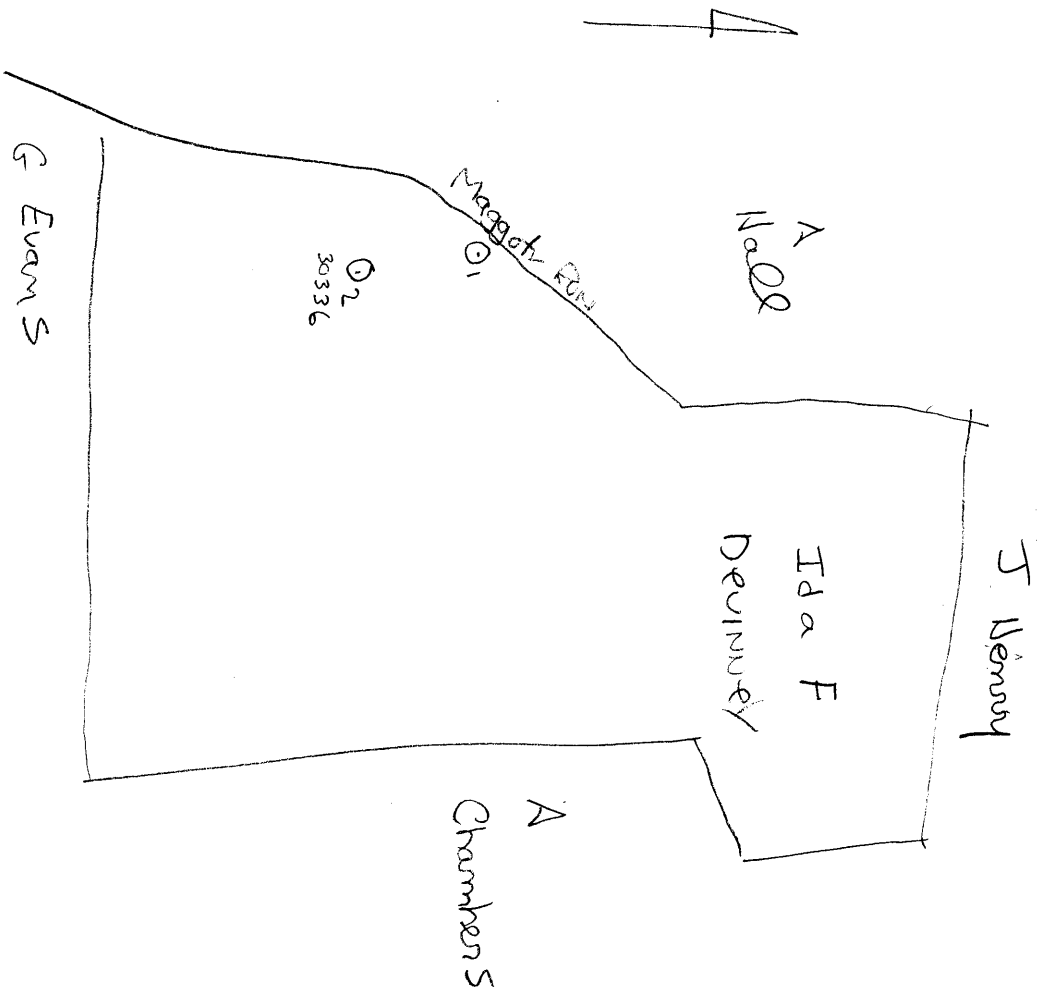
7.5' Quad Cameron

District Liberty

WELL LOCATION PLAT

County 051 Permit 30336

30336



Liberty

IDA F. DEVINNEY NO. 2 WELL.

Liberty District, Marshall County, W. Va.

By R. C. Snyder, Cameron, W. Va.

Abandoned under permit Mars-336-A?

On 114/82 acres, on Maggoty Run.

Elevation, 1305' L.

Drilling commenced Nov. 8, 1909; completed Dec. 27, 1909.

Shot Jan. 11, 1910, at 2972-2981', with 40 qts.

10" casing, 404' (pulled); 8 1/2", 1370'; 6 3/8", 2075'; 2" tubing, 3006'.

Coal was encountered at 991-996'.

Oil well. Record to Dept. of Mines stamped Aug. 30, 1951.

Record to RCT from Mrs. Griffith July 9, 1952. O. F. No. 390.

	Top.	Bottom.
Pittsburgh Coal, dark, soft	991	- 996
Dunkard Sand, dark, hard	1211	- 1231
Big Dunkard Sand, dark, hard	1460	- 1500
Salt Sand, light, hard	1730	- 1810
Big Lime, light, hard	2070	- 2115
Big Injun Sand, light, hard	2115	- 2380
Berea Grit, light, hard	2696	- 2706
Gordon Sand, light, hard (oil, 2973-3193)	2971	- 3004
Total depth		3006 (tubing?)



STATE OF WEST VIRGINIA  
DEPARTMENT OF MINES  
OIL AND GAS DIVISION

390

Permit No. MARS-336-A

Oil or Gas Well X (KIND)

WELL RECORD

Company R. C. Snyder  
 Address Cameron, W. Va.  
 Farm Ida E. Devinney Acres 114/82  
 Location (waters) Maggoty Run  
 Well No. 2 Elev. 1305  
 District Liberty County Marshall  
 The surface of tract is owned in fee by \_\_\_\_\_  
 Address \_\_\_\_\_  
 Mineral rights are owned by \_\_\_\_\_  
 Address \_\_\_\_\_  
 Drilling commenced Nov. 8, 1909  
 Drilling completed Dec. 27, 1909  
 Date Shot Jan 11, 1910 from 2972 To 2981  
 With 40 Qts.  
 Open Flow /10ths Water in \_\_\_\_\_ Inch  
 /10ths Merc. in \_\_\_\_\_ Inch  
 Volume \_\_\_\_\_ Cu. Ft.  
 Rock Pressure \_\_\_\_\_ lbs. \_\_\_\_\_ hrs.  
 Oil \_\_\_\_\_ bbls., 1st 24 hrs.  
 Fresh water \_\_\_\_\_ feet \_\_\_\_\_ feet  
 Salt water \_\_\_\_\_ feet \_\_\_\_\_ feet

Casing and Tubing	Used in Drilling	Left in Well	Packers
Size			
16			Kind of Packer
13			
10	404	None	Size of
8 1/2	1370	1370	
6 1/2	2075	2075	Depth set
5 3/16			
3			Perf. top
2	3006	3006	Perf. bottom
Liners Used			Perf. top
			Perf. bottom

CASING CEMENTED \_\_\_\_\_ SIZE \_\_\_\_\_ No. Ft. \_\_\_\_\_ Date \_\_\_\_\_

COAL WAS ENCOUNTERED AT 991 FEET \_\_\_\_\_ INCHES  
 \_\_\_\_\_ FEET \_\_\_\_\_ INCHES FEET \_\_\_\_\_ INCHES  
 \_\_\_\_\_ FEET \_\_\_\_\_ INCHES FEET \_\_\_\_\_ INCHES

Formation	Color	Hard or Soft	Top	Bottom	Oil, Gas or Water	Depth Found	Remarks
litts/ Coal	Dark	Soft	991	996			
Dunkard	Dark	Hard	1211	1231			
Big Dunkard	Dark	Hard	1460	1500			
Salt Sand	Light	Hard	1730	1810			
Big Lime	Light	Hard	2070	2115			
Big Injun	Light	Hard	2115	2380			
Area Grit	Light	Hard	2696	2706			
Gordon Sand	Light	Hard	2971	3004			
		011	2973	2981			

