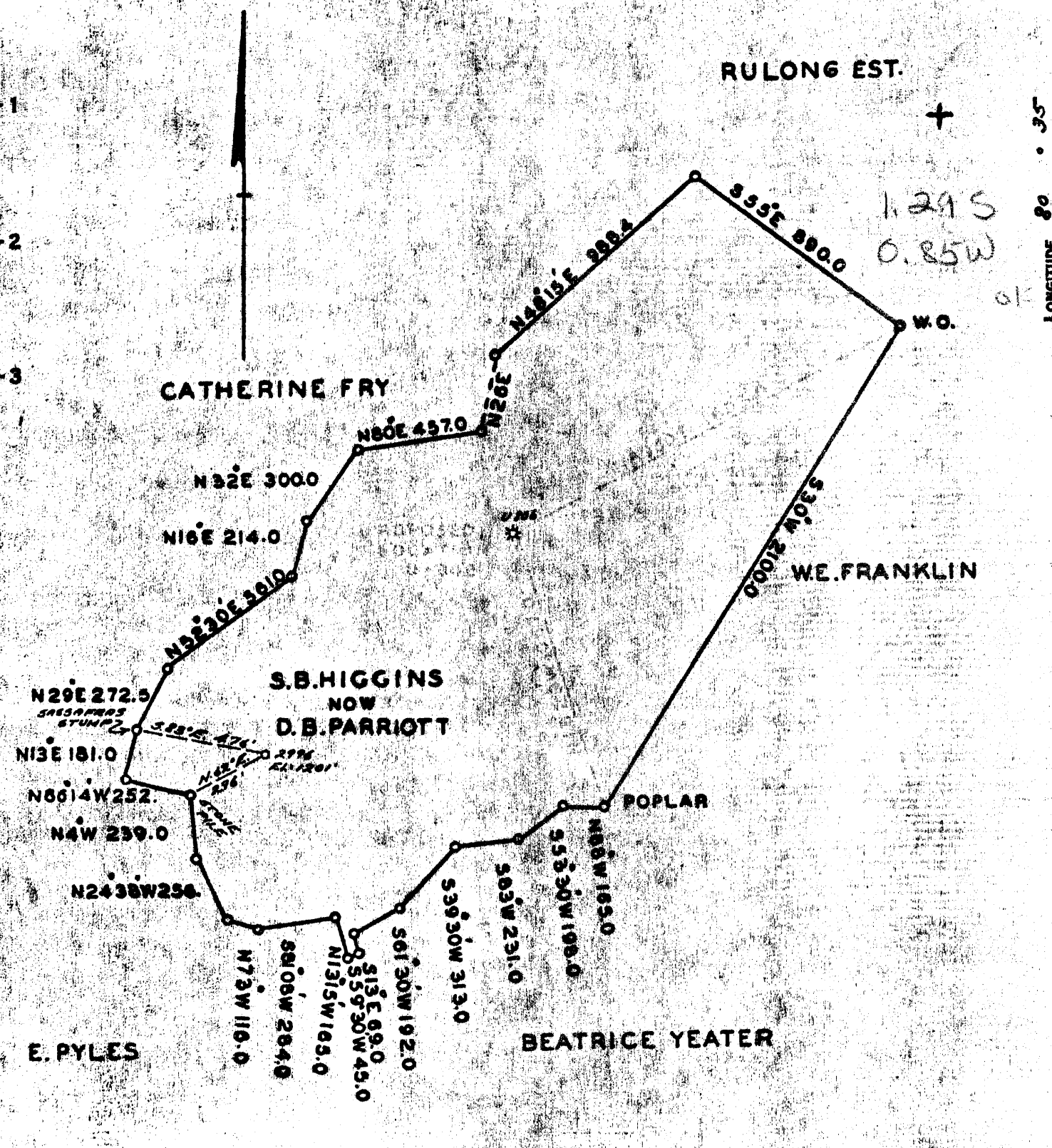


0 1 2 3 LATITUDE 39 ° 45 ' 1

1 2 3 LONGITUDE 80 ° 35 ' 01



COAL OWNED BY   
 NEW LOCATION   
 DEEPER   
 ABANDONMENT  -9-22-71

COMPANY Columbia Gas Trans., Corp.  
 ADDRESS 800 UNION TRUST BLDG. PGH. PA. 15219  
 FARM S.B. HIGGINS  
 TRACT 100 ACRES LEASE NO. 5281  
 WELL (FARM) NO. 1 SERIAL NO. 2996  
 ELEVATION (SPIRIT LEVEL) 1201'  
 QUADRANGLE LITTLETON NC  
 COUNTY MARSHALL DISTRICT LIBERTH  
 ENGINEER Thomas E. Virgin M.  
 ENGINEER'S REGISTRATION NO. 1503  
 FILE NO. Y-15-497 DRAWING NO. Y-15-497  
 DATE 5 NOVEMBER 56 SCALE 1" = 500'

STATE OF WEST VIRGINIA  
 DEPARTMENT OF MINES  
 OIL AND GAS DIVISION  
 CHARLESTON

WELL LOCATION MAP

FILE NO. MARS-3779-A

+ DENOTES LOCATION OF WELL ON UNITED STATES TOPOGRAPHIC MAPS, SCALE 1 TO 62,500. LATITUDE AND LONGITUDE LINES BEING REPRESENTED BY BORDER LINES AS SHOWN.  
 - DENOTES ONE INCH SPACES ON BORDER LINE OF ORIGINAL TRACING.



STATE OF WEST VIRGINIA  
DEPARTMENT OF MINES  
OIL AND GAS DIVISION

436

Quadrangle \_\_\_\_\_

Permit No. 377- p-p *m. flat*

Oil or Gas Well Gas  
(KIND)

WELL RECORD

Company THE MANUFACTURERS LIGHT AND HEAT COMPANY  
Address 800 UNION TRUST BUILDING, PGH., PA.  
Farm S. B. Higgins Acres 100  
Location (waters) \_\_\_\_\_  
Well No. 1-2996 (U-81) Elev. 1201'  
District Liberty County Marshall

Casing and Tubing	Used in Drilling	Left in Well	Packers
Size			
16			Kind of Packer
13			
10	303	303	Size of
8 1/4	1486	1486	
6 5/8	2132	2132	Depth set
5 3/16			
3			Perf. top
2			Perf. bottom
Liners Used			Perf. top
			Perf. bottom

The surface of tract is owned in fee by \_\_\_\_\_  
Address \_\_\_\_\_

Mineral rights are owned by \_\_\_\_\_  
Address \_\_\_\_\_

Drilling commenced June 6, 1925

Drilling completed August 11, 1925

Date Shot \_\_\_\_\_ From \_\_\_\_\_ To \_\_\_\_\_

With \_\_\_\_\_

Open Flow 33/10ths Water in 2 Inch  
/10ths Merc. in \_\_\_\_\_ Inch

Volume *m/m* Cu. Ft.

Rock Pressure \_\_\_\_\_ lbs. \_\_\_\_\_ hrs.

Oil \_\_\_\_\_ bbls., 1st 24 hrs.

Fresh water \_\_\_\_\_ feet \_\_\_\_\_ feet

Salt water \_\_\_\_\_ feet \_\_\_\_\_ feet

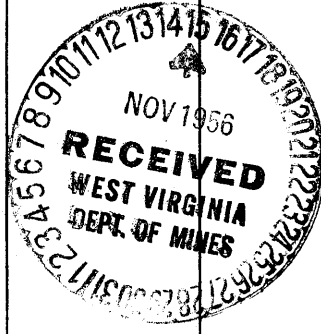
CASING CEMENTED \_\_\_\_\_ SIZE \_\_\_\_\_ No. Ft. \_\_\_\_\_ Date \_\_\_\_\_

COAL WAS ENCOUNTERED AT 660 FEET \_\_\_\_\_ INCHES

878 FEET \_\_\_\_\_ INCHES 968 FEET \_\_\_\_\_ INCHES

1842 FEET \_\_\_\_\_ INCHES \_\_\_\_\_ FEET \_\_\_\_\_ INCHES

Formation	Color	Hard or Soft	Top	Bottom	Oil, Gas or Water	Depth Found	Remarks
Waynesburg Coal			660	665	Black soft		
Mapletown coal			878	883	Black soft		
Pittsburgh Coal			968	975	Steel line black soft		
Murphy sand			1080	1105	white hard		
Gas sand			1610	1668	No Dunkard Sand		
Coal			1842	1847	black soft		
Salt Sand			1945	2025	gray hard		
Maxon sand			2034	2089	Steel line gray hard		
Pencil Cave			2089	2093	dark soft		
Big Lime			2093	2135	white hard		
Big Injan			2135	2406	gas 2229-27-	(33/10 W 2")	
Fifty foot			2905	2930	gray hard		
Thirty foot			2952	2978	gray hard		
Gordon Stray			2988	3000	gray hard		
Gordon sand			3003	3025	oil 3005 to	3015	
TOTAL				3031			



Formation	Color	Hard or Soft	Top	Bottom	Oil, Gas or Water	Depth Found	Remarks

*(Handwritten mark)*

Date November 14, 19 56

APPROVED THE MANUFACTURERS LIGHT AND HEAT CO. Owner

By *Walter A. Penn*  
 (Type) LAND AGENT