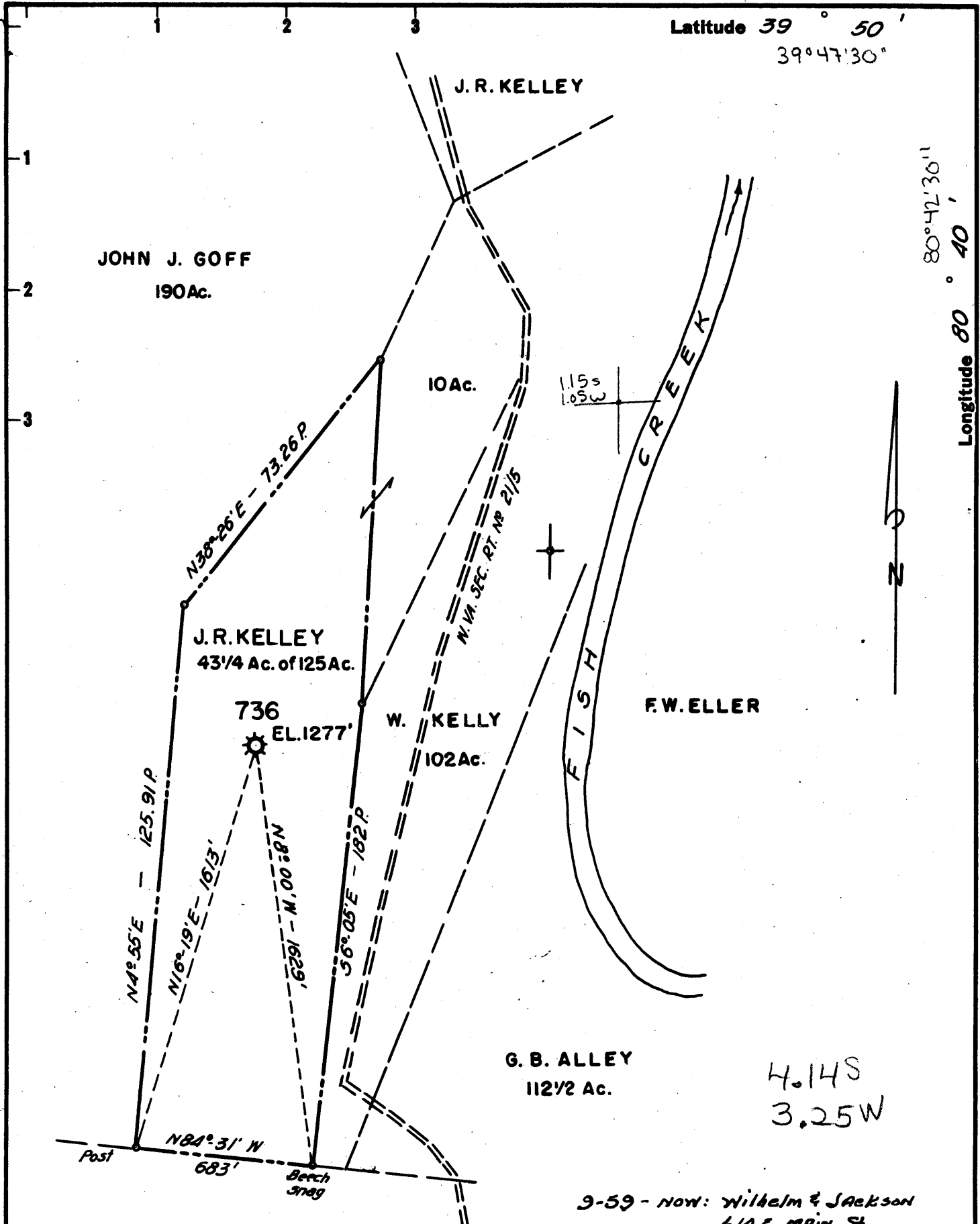


Latitude 39° 50'
39° 47' 30"

Longitude 80° 42' 30"
80° 40'



New Location...
 Drill Deeper.....
 Abandonment.....

FORMERLY H.N.G.CO. WELL NO. 736

9-59 - now: Wilhelm & Jackson
 614 E. MAIN St.
 CLARKSBURG, W.VA.

4.14S
 3.25W

Company	A.M. SNIDER		
Address	HUNDRED, W. VA.		
Farm	J.R. KELLEY		
Tract	Acres	Lease No.	125 1938
Well (Farm) No.	Serial No. 736		
Elevation (Spirit Level)	1277'		
Quadrangle	CAMERON		
County	Marshall	District	MEADE
Engineer	HENRY A. HAIN		
Engineer's Registration No.	3150		
File No.	A.M.S. - 26	Drawing No.	
Date	7-2-59'	Scale	1" = 30 POLES

STATE OF WEST VIRGINIA
 DEPARTMENT OF MINES
 OIL AND GAS DIVISION
 CHARLESTON

WELL LOCATION MAP

FILE NO. MARS-464-A

+ Denotes location of well on United States Topographic Maps, scale 1 to 62,500, latitude and longitude lines being represented by border lines as shown.

- Denotes one inch spaces on border line of original tracing.

Meade District, Marshall County, W. Va.
By Hope Natural Gas Co.
Elevation, 1300' B.
Record from C. C. Reed, Oct. 5, 1939.

	Top.	Bottom.
Conductor	0	16
(Water at 120')		
Native coal	550	555
Mapletown (Sewickley) Coal	805	810
Pittsburgh Coal	900	905
Little Dunkard Sand	1220	1245
Big Dunkard Sand	1315	1350
Salt Sand (water at 1700-1790')	1635	1840
Maxton Sand	1905	1920
Big Lime	1980	2025
Big Injun Sand	2025	2305
Stray Sand	2877	2882
Gordon Sand (gas, 2902')	2900	2910
Total depth		2955