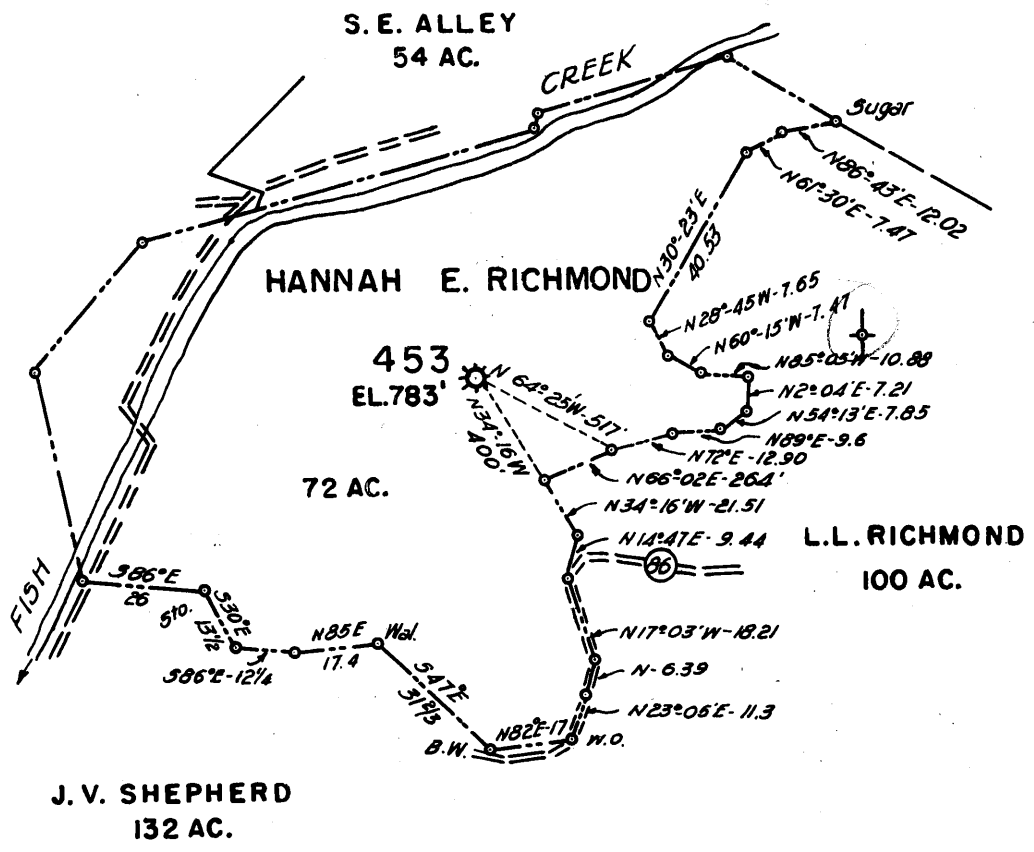


Latitude 39° 50'

Longitude 80° 40'



4.33S
1.99W

- Redrill.....
- New Location.....
- Drill Deeper.....
- Abandonment..... 453 FORMERLY H.N.G.CO. WELL NO. 453

Company A. M. SNIDER	
Address HUNDRED, W. VA.	
Farm HANNAH E. RICHMOND	
Tract _____ Acres 72	Lease No. 2005
Well (Farm) No. _____	Serial No. 453
Elevation (Spirit Level) 783'	
Quadrangle CAMERON	
County MARSHALL	District MEADE
Engineer HENRY A. HAIN	
Engineer's Registration No. 3150	
File No. A. M. S.	Drawing No. _____
Date Sept. 1969	Scale 1" = 40 POLES

STATE OF WEST VIRGINIA
DEPARTMENT OF MINES
OIL AND GAS DIVISION
CHARLESTON

WELL LOCATION MAP

FILE NO. MARS-405-A

+ Denotes location of well on United States Topographic Maps, scale 1 to 62,500, latitude and longitude lines being represented by border lines as shown.

— Denotes one inch spaces on border line of original tracing.