

Latitude 39° 50'

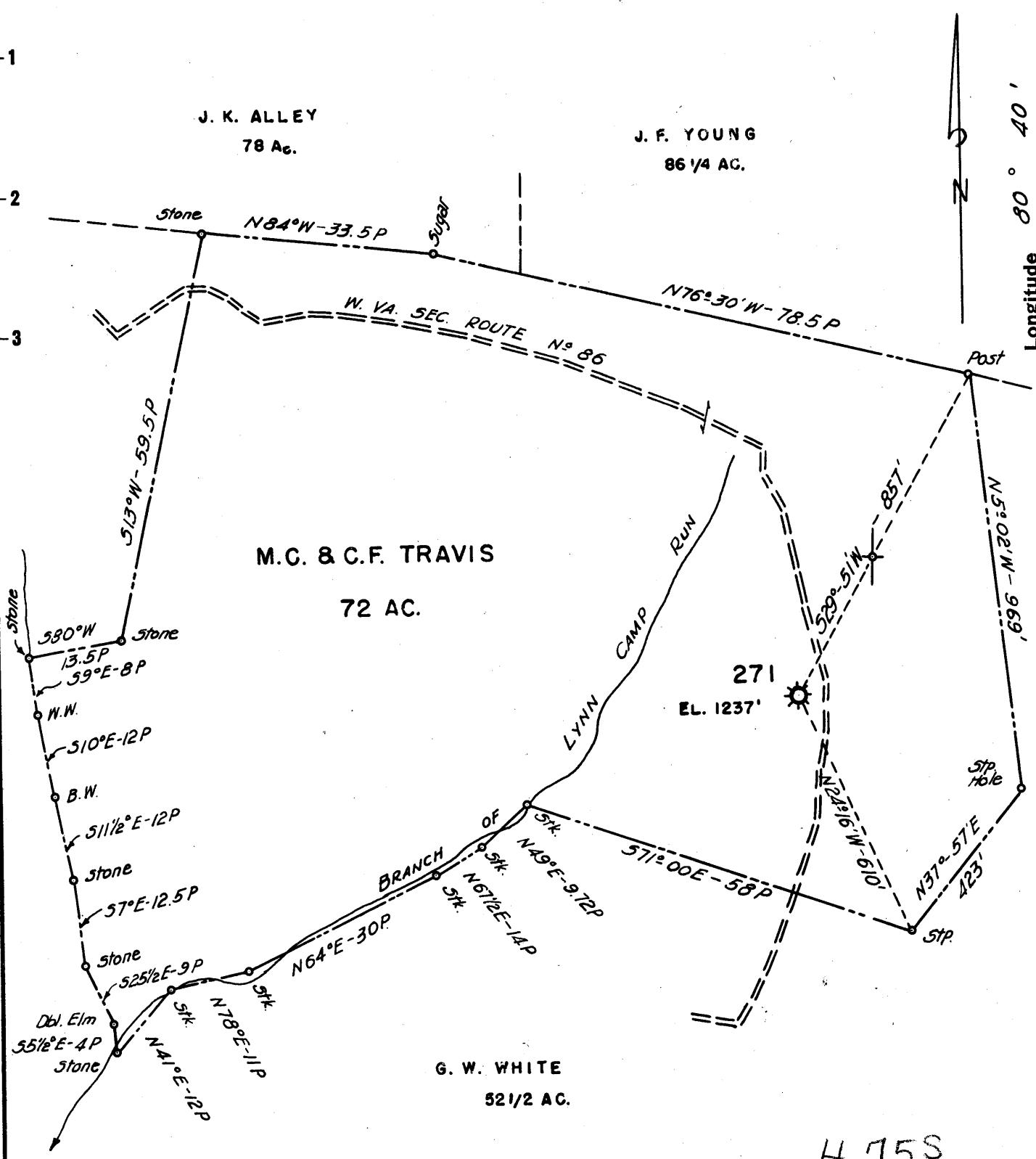
Longitude 80° 40'

J. K. ALLEY
78 Ac.

J. F. YOUNG
86 1/4 AC.

M.C. & C.F. TRAVIS
72 AC.

G. W. WHITE
52 1/2 AC.



4.75S
1.22W

- New Location ..
- Drill Deeper ..
- Abandonment ..

FORMERLY H.N.G.CO. WELL NO. 271

Company	A. M. SNIDER		
Address	HUNDRED, W. VA.		
Farm	M.C. & C.F. TRAVIS		
Tract	Acres	72	Lease No. 2012
Well (Farm) No.			Serial No. 271
Elevation (Spirit Level)	1237'		
Quadrangle	CAMERON		
County	MARSHALL	District	MEADE
Engineer	HENRY A. HAIN		
Engineer's Registration No.	3150		
File No.	A.M.S - 24	Drawing No.	
Date	7-2-59	Scale	1" = 20 POLES

STATE OF WEST VIRGINIA
DEPARTMENT OF MINES
OIL AND GAS DIVISION
CHARLESTON

WELL LOCATION MAP

FILE NO. TRAVIS-406-A

+ Denotes location of well on United States Topographic Maps, scale 1 to 62,500, latitude and longitude lines being represented by border lines as shown.

- Denotes one inch spaces on border line of original tracing.