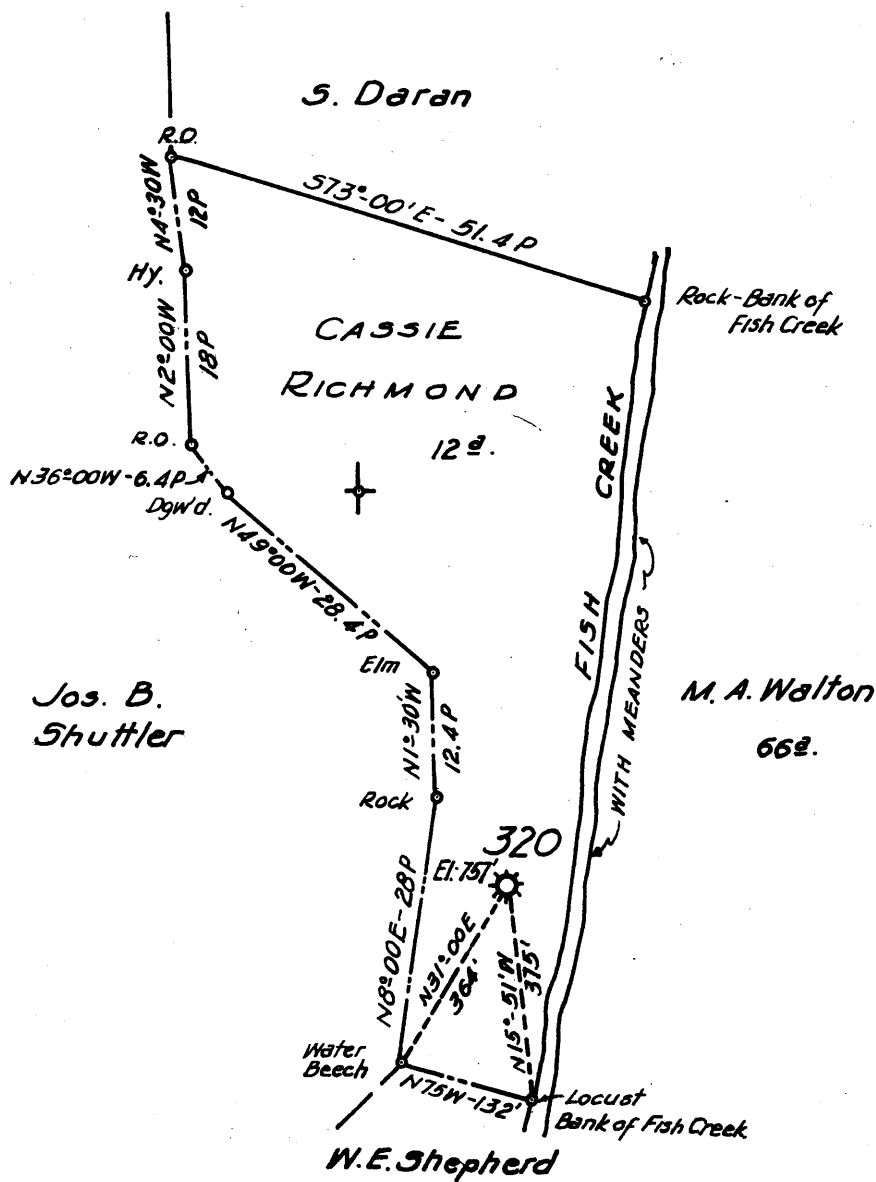


Latitude 39° 50'

Longitude 80° 35'



4.33S
4.34W

New Location
 Drill Deeper
 Abandonment 320

FORMERLY H.N.G.C. WELL N°320

Company A. M. SNIDER
 Address HUNDRED, W. VA.
 Farm CASSIE RICHMOND
 Tract _____ Acres 12 Lease No. 2016
 Well (Farm) No. _____ Serial No. 320
 Elevation (Spirit Level) 757'
 Quadrangle CAMERON
 County MARSHALL District MEADE
 Engineer HENRY A. HAIN
 Engineer's Registration No. 3150
 File No. A.M.S. Drawing No. _____
 Date DEC. 11, 1959 Scale 1" = 20 poles

STATE OF WEST VIRGINIA
 DEPARTMENT OF MINES
 OIL AND GAS DIVISION
 CHARLESTON

WELL LOCATION MAP

FILE NO. MARS-423-A

+ Denotes location of well on United States Topographic Maps, scale 1 to 62,500, latitude and longitude lines being represented by border lines as shown.

- Denotes one inch spaces on border line of original tracing.