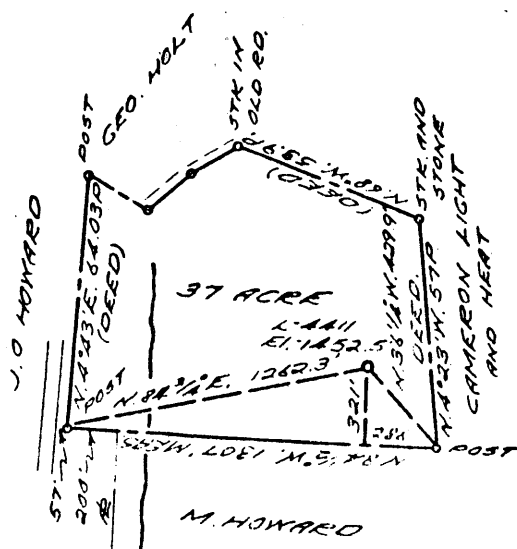


0 1 2 3 LATITUDE 39 ° 50 ' 1

1  
2  
3 LONGITUDE 80 ° 35'



2.185  
4.26W

COAL OWNED BY \_\_\_\_\_  
 PART PLUG.   
 NEW LOCATION...   
 DRILL DEEPER...   
 ABANDONMENT...

0-25-24

COMPANY THE MANUFACTURERS LIGHT & HEAT  
 ADDRESS 800 UNION TRUST BLDG. PGH. PA.  
 FARM WILLIAM GORBY  
 TRACT \_\_\_\_\_ ACRES 50 LEASE No. 28909  
 WELL (FARM) No. 1 SERIAL No. 4411  
 ELEVATION (SPIRIT LEVEL) 1452.5'  
 QUADRANGLE CAMERON  
 COUNTY MARSHALL DISTRICT LIBERTY  
 ENGINEER John A. Louden (J.F.)  
 ENGINEER'S REGISTRATION No. 12710  
 FILE No. \_\_\_\_\_ DRAWING No. Y-25-611  
 DATE 23 AUG. 1962 SCALE 1" = 800'

STATE OF WEST VIRGINIA  
 DEPARTMENT OF MINES  
 OIL AND GAS DIVISION  
 CHARLESTON

WELL LOCATION MAP

FILE No. MARS-448-A

+ DENOTES LOCATION OF WELL ON UNITED STATES TOPOGRAPHIC MAPS, SCALE 1 TO 62,500. LATITUDE AND LONGITUDE LINES BEING REPRESENTED BY BORDER LINES AS SHOWN.  
 — DENOTES ONE INCH SPACES ON BORDER LINE OF ORIGINAL TRACING.