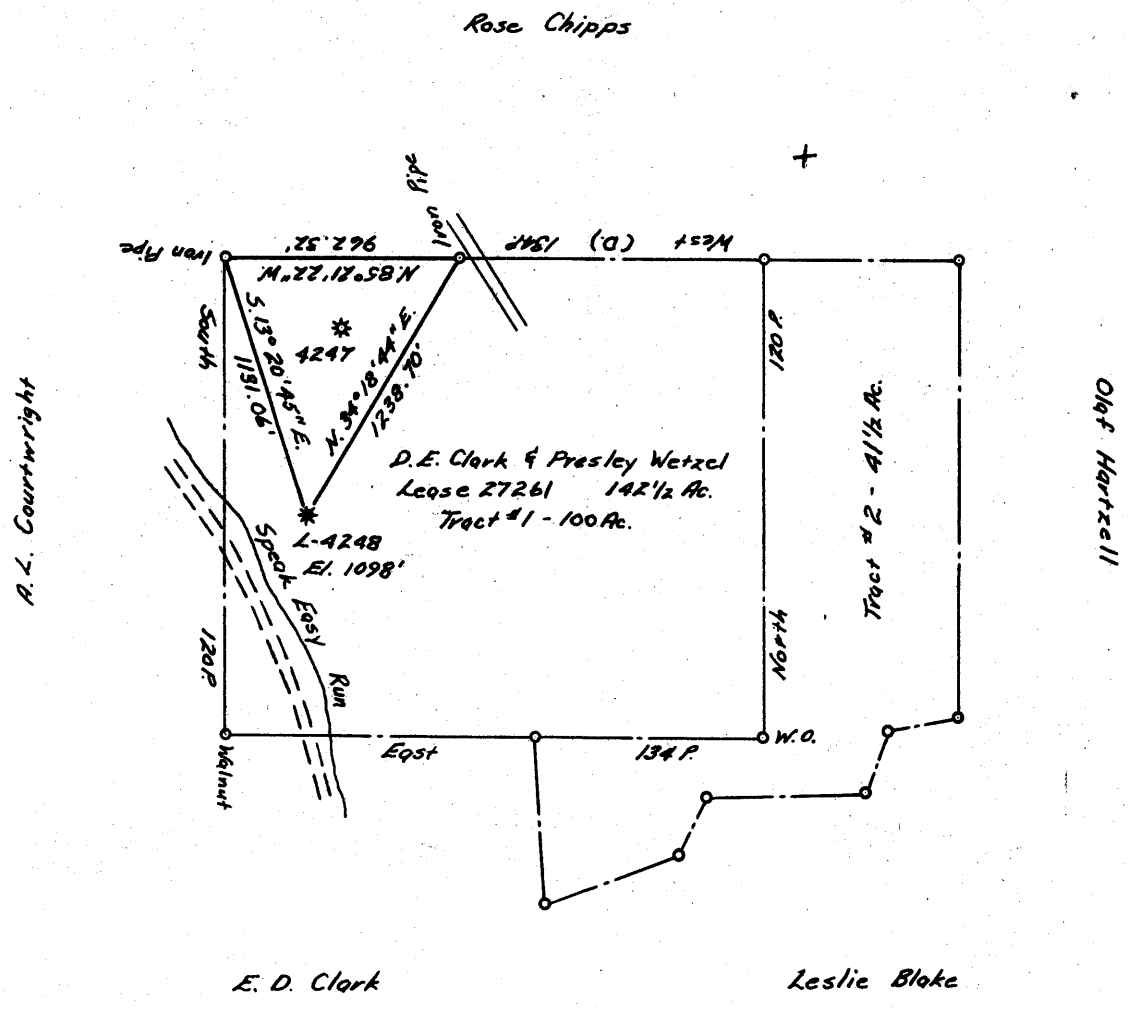


0 1 2 3 LATITUDE 39° 50'

1 2 3 LONGITUDE 80° 25'



3.35S
2.61W

COAL OWNED BY M. A. Hanna Coal Company

- NEW LOCATION
- RECONDITION
- DRILL DEEPER
- ABANDONMENT

"I, the undersigned, hereby certify that this map is correct to the best of my knowledge and belief and shows all the information required by paragraph 6 of the rules and regulations of the oil and gas section of the mining laws of West Virginia."
Minimum degree of accuracy is one part in 2500

Signed Robert M. Heil (JF)

COMPANY The Manufacturers Light And Heat Company
 ADDRESS 800 Union Trust Bldg. Pittsburgh, Penna.
 FARM D.E. Clark & Presley Wetzel
 MAP 0-25/28 ACRES 142 1/2 LEASE NO. 27261
 WELL (FARM) NO. 2 SERIAL NO. L-4248
 ELEVATION (SPIRIT LEVEL) 1098'
 QUADRANGLE Cameron 15'
 COUNTY Marshall DISTRICT Liberty
 POINT OF PROVEN ELEVATION Intersection of roads 2 miles north of well
 FILE NO. _____ DRAWING NO. Y-25-819
 DATE August 30, 1963 SCALE 1" = 800'

STATE OF WEST VIRGINIA
 DEPARTMENT OF MINES
 OIL AND GAS DIVISION
 CHARLESTON
 WELL LOCATION MAP
 FILE NO. MARS-465-A

+ DENOTES LOCATION OF WELL ON UNITED STATES TOPOGRAPHIC MAPS. SCALE 1 TO 62,500. LATITUDE AND LONGITUDE LINES BEING REPRESENTED BY BORDER LINES AS SHOWN.
 - DENOTES ONE INCH SPACES ON BORDER LINE OF ORIGINAL TRACING.