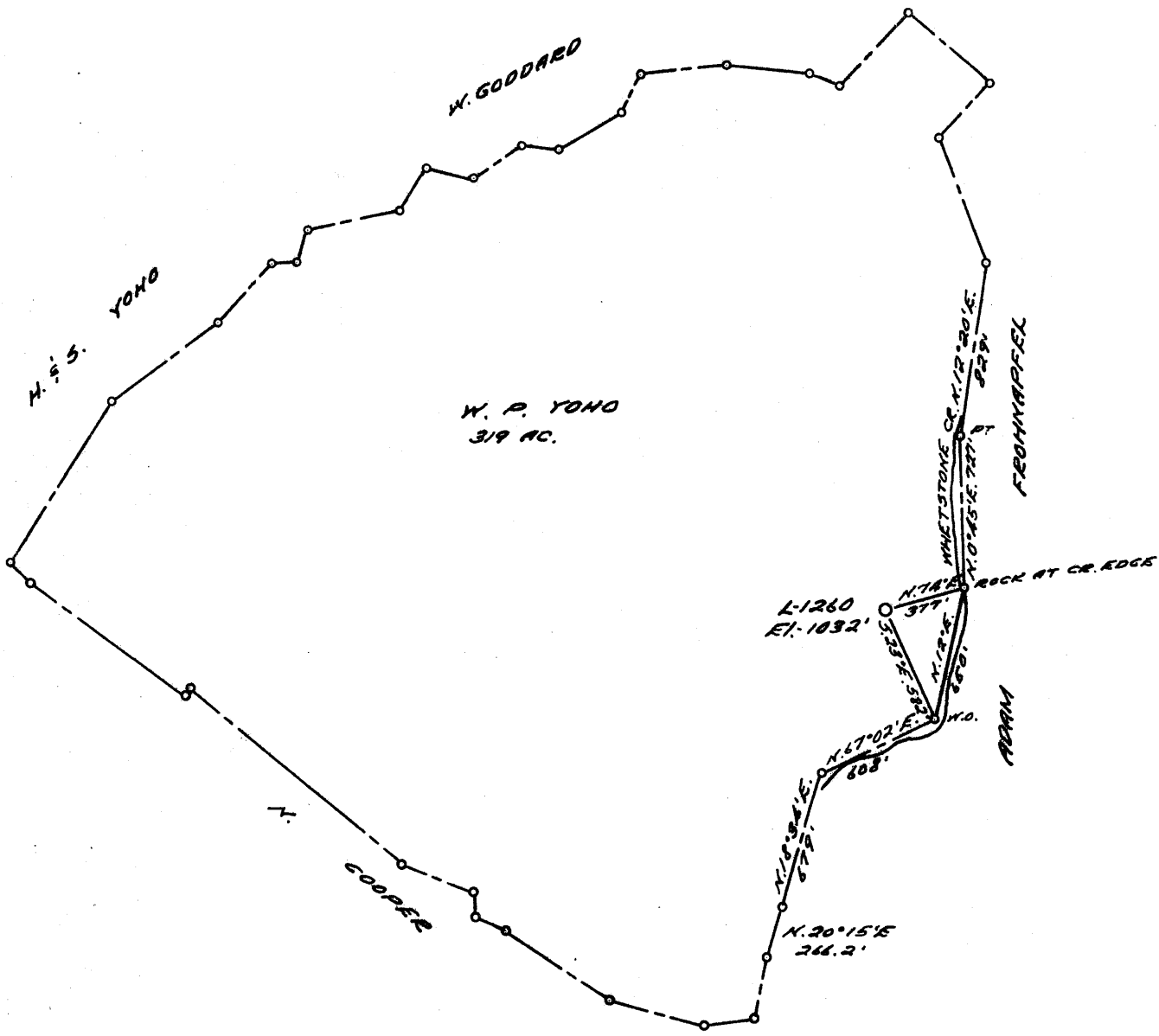


LATITUDE 39 ° 45 ' 1

LONGITUDE 80 ° 40 '



0.49S
3.30W

COAL OWNED BY OHIO EDISON CO.

- NEW LOCATION
- RECONDITION
- DRILL DEEPER
- ABANDONMENT

"I, the undersigned, hereby certify that this map is correct to the best of my knowledge and belief and shows all the information required by paragraph 6 of the rules and regulations of the oil and gas section of the mining laws of West Virginia."
Minimum degree of accuracy is one part in 200'

Signed Robert McNeill
A 361-E (O.C.)

COMPANY	THE MANUFACTURERS LIGHT & HEAT		
ADDRESS	800 UNION TRUST BLDG. PGH. PA.		
FARM	W. P. YONO		
MAP	P-25-1	ACRES	251
		LEASE NO.	2849
WELL (FARM) NO.	1	SERIAL NO.	1260
ELEVATION (SPIRIT LEVEL)	1032'		
QUADRANGLE	LITTLETON	NW	
COUNTY	MARSHALL	DISTRICT	FRANKLIN
POINT OF PROVEN ELEVATION	B.M. APPROX. 2 MI. S.W. OF WELL		
	ON COFFIED RIDGE B.M. EL. = 1408'		
FILE NO.	DRAWING NO. Y-28-388		
DATE	27 JAN. 1967	SCALE 1" = 800'	

STATE OF WEST VIRGINIA
DEPARTMENT OF MINES
OIL AND GAS DIVISION
CHARLESTON
WELL LOCATION MAP

FILE NO. 2209-4919
per

+ DENOTES LOCATION OF WELL ON UNITED STATES TOPOGRAPHIC MAPS, SCALE 1 TO 62,500, LATITUDE AND LONGITUDE LINES BEING REPRESENTED BY BORDER LINES AS SHOWN.

- DENOTES ONE INCH SPACES ON BORDER LINE OF ORIGINAL TRACING.