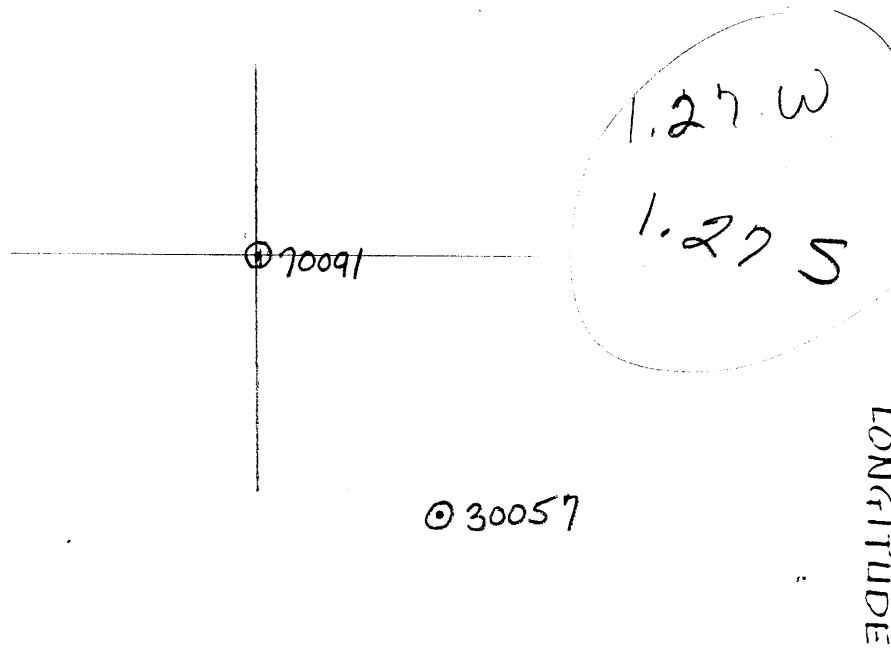


LATITUDE

39° 50'



80° 32' 30"

7'5" OGIS topo location

7.5' loc 1.27W 15' loc \_\_\_\_\_  
1.27S (calc.) \_\_\_\_\_

Company WHEELING NAT. GAS CO.

Farm BRICE HOWARD HEIRS #1

Quad CAMERON

County MARSHALL

District LIBERTY

WELL LOCATION MAP

File No. 70091

#66 ON COUNTY REPORT MAP

PG. 382 TEXT

Liberty District, Marshall County, W. Va.  
 By Wheeling Natural Gas Co.  
 Located 3/4 mi. S. of Cameron.  
 Elevation, 1290' B.

	Top.	Bottom.
Coal, Waynesburg	609	- ...
Mapletown (Sewickley) Coal	795	- ...
Pittsburgh Coal	898	- ...
Sand, Murphy	1059	- ....
Red rock	1260	- ....
Little Dunkard Sand	1376	- 1418
Coal, Lower Freeport	1466	- ....
Big Dunkard Sand (Lower Freeport)	1505	- 1572
Salt Sand	1625	- 1665
Sand	1680	- 1787
Sand, Maxton	1815	- 1910
Big Lime	1988	- 2045
Big Injun Sand	2045	- 2297
Red rock	2730	- 2785
Fifty-foot Sand	2822	- 2862
Sand, Gordon Stray (gas)	2915	- 2935

Liberty District, Marshall County, W. Va.  
 By Wheeling Natural Gas Co.  
 Located  $\frac{3}{4}$  mi. S. of Cameron.  
 Elevation, 1290' B.

	Top.	Bottom.
Coal, Weynesburg	609	- ...
Mapletown (Sewickley) Coal	795	- ...
Pittsburgh Coal	896	- ...
Sand, Murphy	1059	- ....
Red rock	1260	- ....
Little Dunkard Sand	1376	- 1418
Coal, Lower Freeport	1466	- ....
Big Dunkard Sand (Lower Freeport)	1505	- 1572
Salt Sand	1625	- 1665
Sand	1680	- 1787
Sand, Maxton	1845	- 1910
Big Line	1988	- 2045
Big Injun Sand	2045	- 2297
Red rock	2730	- 2785
Fifty-foot Sand	2822	- 2862
Sand, Gordon Stray (gas)	2915	- 2935