

LATITUDE 38° 55' 00"

82° 2' 30" LONGITUDE

7'5 OGIS topo location

7.5' loc 0085 15' loc \_\_\_\_\_  
                  1.61W (calc.) \_\_\_\_\_

Company \_\_\_\_\_

Farm \_\_\_\_\_

Quad CHESHIRE 7 1/2'

County MASON

District ROBINSON

WELL LOCATION MAP

File No. 053-0006

DEEP WELL



LATITUDE 38°55'

82° 02' 30"

LONGITUDE

7'5 OGIS topo location

Loc. from OGIS MAP.

7.5' loc 0.075  
1.63W

15' loc 0.075  
(calc.) 3.27W

Company \_\_\_\_\_

Farm \_\_\_\_\_

Quad Pt. Pleasant EC  
CHESHIRE 7 1/2

County MASON

District ROBINSON

WELL LOCATION MAP

File No. MASON 6

Plot  Log  Card  CSD  Mflm

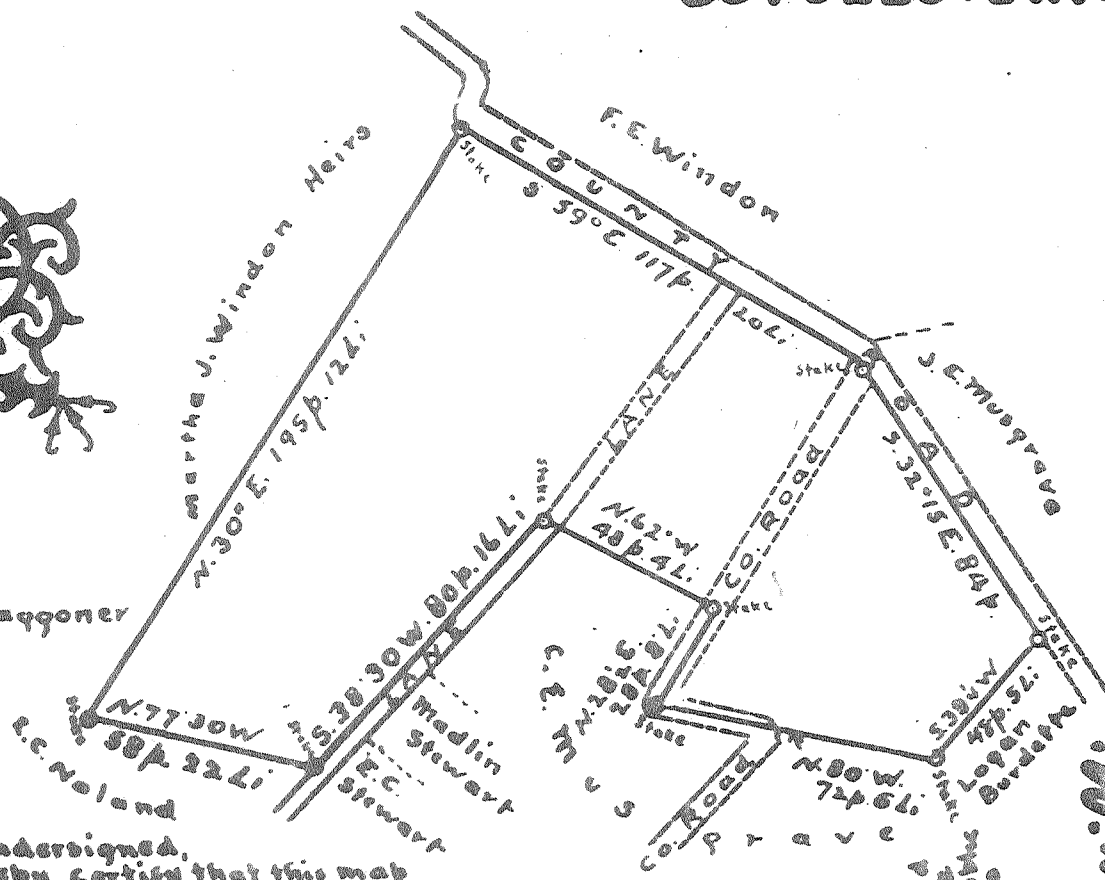
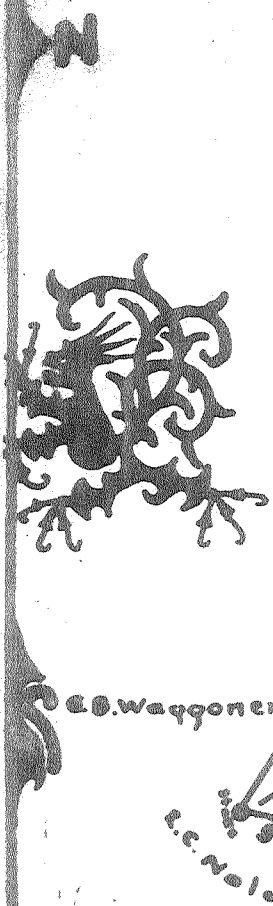
Lat. - 38°55'



Quad - Point Pleasant  
EC

Long. 82°00'

**PROPOSED LOCATION OF WELL NO. 1  
COLUMBIA CARBON CO.  
ON E.C. ROUSH 133 A. FARM  
ROBINSON DIST., MASON CO., W. VA.  
30 POLES: 1 INCH**



I, the undersigned,  
hereby certify that this map  
is correct and shows all the information  
to the best of my knowledge and belief  
required by the City and Gas  
/section of the mining laws  
of West Virginia.

*[Handwritten signature]*

MSD-6  
301209

Acknowledged  
before me  
Notary Public  
DEC. 9, 1930  
My commission  
expires  
April 20, 1932

*John Williams*

Plugging Permit issued: 4-20-31

MAS-6-P

DEEP WELL

1-0 unnamed (0)

AUG 29 1973

W. C. HOUSE NO. 1 (04-706) WELL.

Robinson District, Mason County, W. Va.  
By The Columbia Carbon Co., Charleston, W. Va.  
1 mi. N. E. of Oldtown and 2.2 mi. S. E. of Maggie.  
0.52 mi. E. of 82° 05' and 5.67 mi. E. of 38° 50' - 80 - Point  
Pleasant Quadrangle.

3.88 W 82° 00'  
0.08 S 38° 55'

Contractors, Drywood & Palmer, Racine, Ohio.  
Elevation, 620'.

18" O. B. line pipe, 70-lb., 157' 1"; 12-3/8" O. B. line pipe, 50-lb.,  
183'; 10" steel casing, 32-lb., 328' 3"; 8", 24-lb., casing,  
1769' 3".

Starts near horizon of Pittsburgh Coal.

Record published on pp. 304-5 of Volume VII, W. Va. Geol. Survey.

Drilled under permit (04-6), December, 1930.

	Top.	Bottom.
clay and sand	0	23
quicksand	23	175
Blue slate	175	210
Red rock	210	235
Blue slate	235	275
Red rock	275	320
Slate	320	360
lime	360	375
Slate	375	385
Sand (6 bailers of water per hour)	385	455
Slate	455	495
Sand (hole full of water)	495	555
Blue slate	555	565
Shells	565	610
Slate	610	650
lime	650	680
Slate	680	700
Sand	700	740
Slate	740	765
Sand	765	780
Slate	780	830
lime	830	840
Slate	840	885
Sand	885	900
Black slate	900	920
Sand	920	970
lime	970	985
Black slate	985	1000
Slate and lime shells	1000	1040
Sand	1040	1060
Slate	1060	1070
Big lime (water)	1070	1135
Slate	1135	1145 1/2
Sand, Big Injun	1175 1/2	1215
Slate	1215	1659
Coffee slate	1659	1669
1st Marco Sand	1669	1696
Slate and shells	1696	1825
Slate	1825	2220
Crabby shells (gas, 200,000 cu. ft. after blowing open four hours)	2220	2221
Slate	2221	2560

(over)

Deep Well

H. C. ROUSH NO. 1 (OH-706) WELL (Continued).

	Top.	Bottom.
Light shale (6,355 cu. ft. gas)	2560	- 2600
Brown shale	2600	- 2620
Dark and light shale, mixed half and half	2620	- 2670
Brown shale	2670	- 2700
Dark and light shale, mixed half and half (2,387 cu. ft. gas)	2700	- 2752
Brown shale	2752	- 2784
Dark and light shale, mixed half and half (1,179 cu. ft. gas)	2784	- 2808
Brown shale (927 cu. ft. gas)	2808	- 2968
Light shale and slate	2968	- 3140 <sup>821</sup>
Dark shale (927 cu. ft. gas)	3140	- 3150 <sup>829</sup>
Light shale (4,188 cu. ft. gas)	3150	- 3208 <sup>829</sup>
Brown shale	3208	- 3330
Corniferous lime (water at 4080'--- 730' in line---40' water pay) (Corniferous, Helderberg, etc.)	3330	- 4120
Total depth		4120

3330  
620  
 2710

Mas-6

THE COLUMBIA CARBON COMPANY - G. W. #706.

E. C. Roush  
 Robison Dist., Mason County, W. Va.  
 Started to drill December 15, 1930. 10-9-31  
 Caywood & Palmer, Contractors, Racine, Ohio.

18" - 15' 6"  
 13" - 18'  
 10" - 32'  
 8 1/4 - 175'

Formation	Top	Bottom	Amount
Clay & Sand	0	23	23
Quicksand	23	175	152
Blue Slate	175	210	35
Red Rock	210	235	25
Blue Slate	235	275	40
Red Rock	275	320	45
Slate	320	360	40
Lime	360	375	15
Slate	375	385	10
Sand 6 bailers of water per hour	385	455	70
Slate	455	495	40
Sand A hole full of water	495	555	60
Blue Slate	555	565	10
Shells	565	510?	45
Slate	610	650	40
Lime	650	680	30
Slate	680	700	20
Sand	700	740	40
Slate	740	765	25
Sand	765	780	15
Slate	780	830	50
Lime	830	840	10
Slate	840	885	45
Sand	885	900	15
Black Slate	900	920	20
Sand	920	970	50
Lime	970	985	15
Black Slate	985	1000	15
Slate & Lime Shells	1000	1040	40
Sand	1040	1060	20
Slate	1060	1070	10
Injun Sand Water	1070	1135	65
Slate	1135	1145	40?
Sand	1175	1215	40
Slate	1215	1659	144
Coffee Slate	1659	1669	10
1st. Berea Sand water	1669	1696	27
Slate & Shells	1696	1825	129
Slate	1825	2220	395
Gritty Shells Gas 200,000 cu. ft.	2220	2221	1
Slate after blowing open	2221	2560	339
	4 hours (blew out in short time)		
Light shale 6355 cu. ft. gas	2560	2600	40
Brown Shale	2600	2620	20
Dark & Light Shale mixed half and half	2620	2670	50
Brown Shale	2670	2700	30
Dark & Light Shale mixed half and half - 2387 cu. ft. gas	2700	2700	0
Brown Shale	2700	2700	0
Dark & Light Shale mixed half & Half 1179 cu. ft. gas	2700	2784	84
Brown Shale 927 cu. ft. gas	2808	2968	160
Light Shale & Slate	2968	3140	172
Dark Shale 927 cu. ft. gas	3140	3150	10
Light Shale - 4188 cu. ft. gas	3150	3208	58
Brown Shale	3208	3330	122
Top of Corniferous Lime - water at 4080 ft. 750 ft. in Lime - 40 ft. water pay	3330	4120	790

2220 gas 20M bler  
 down in  
 w. A tin  
 2570 gas 3,000  
 2590 " 3,300  
 2750 " 2,029  
 2838 " 1000  
 3490 oil show  
 4070-4075 show  
 gas, air & water -  
 hole filled with  
 water not 1080-4

TD

4195

mas-6

Columbian Carbon Co. Company  
 Charleston, W. Va. Address

COMPLETION DATA SHEET  
 NO. 2  
 FORMATION RECORD

Name	Color	Character	Oil, Gas or Water	Top	Bottom	Thickness	Total Depth	Remarks
and Black Slate				885	900	15		
and				900	920	20		
and				920	970	50		
and Black Slate				970	985	15		
ate & Lime Shells				985	1000	15		
ate				1000	1040	40		
and				1040	1060	20		
ate				1060	1070	10		
Jun Sand				1070	1135	65		
ate				1135	1175	40		
and				1175	1215	40		
ate				1215	1659	144		
ffee Slate				1659	1669	10		
rst Berea Sand				1669	1696	27		
ate & Shells				1696	1825	129		
te				1825	2220	395		
ty Shells				2220	2221	1		
te				2221	2560	339		
ht Shale				2560	2600	40		
wn Shale				2600	2620	20		
k & Light Shale				2620	2670	50		
wn Shale				2670	2700	30		
k & Light Shale				2700	2752	52		

shot  
 Well was not shot at ..... feet; well was shot at ..... feet.  
 salt  
 Fresh water at ..... feet; salt fresh water at ..... feet.  
 producing  
 Well was ..... hole.  
 dry

Date ..... Approved ..... Owner .....

(NOTE: All bottom formations must be noted as indicated above and all key-rocks and oil and gas sands must be recorded under their proper geological names in the district as well as any local names commonly used in the district for each stratum.)

7130-6

Columbian Carbon Co. Company  
Charleston, W. Va. Address

COMPLETION DATA SHEET  
NO. 2  
FORMATION RECORD

Name	Color	Character	Oil, Gas or Water	Top	Bottom	Thickness	Total Depth	Remarks
Brown Shale				2752	2784	32		
Dark & Light Shale				2784	2808	24		
Brown Shale				2808	2968	160		
Light Shale & Slate				2968	3140	172		
Dark Shale				3140	3150	10		
Light Shale				3150	3208	58		
Brown Shale				3208	3330	122		
Top of Line Carnifus				3330 ft.	-	5 ft.		

TD 4120

see pg. 622  
Vol VII 1944  
for more info.

Well was not shot at ..... feet; well was shot at ..... feet.

Fresh water at 385 feet; salt water at 740 feet.

Well was producing hole.  
dry

April 10, 1931 Date

Approved Columbia Carbon Co. Owner  
By Glen Beach

NOTE: All bottom formations must be noted as indicated above and all key-rocks and oil and gas sands must be recorded under their proper geological names in the district as well as any local names commonly used in the district for such strata.



7122-6

WEST VIRGINIA DEPARTMENT OF MINES

Oil and Gas Section

PRELIMINARY DATA SHEET NO. 1

File No. One Well No. One

Columbian Carbon Co. Company, of Charleston, W. Va.

on the E. C. Roush Farm

containing 133 acres. Location

Robinson District, in Mason County, West Virginia.

The surface of the above tract is owned in fee by E. C. Roush of Point Pleasant, Route #1 address, and the mineral rights are owned by \_\_\_\_\_ of \_\_\_\_\_

The oil and gas privileges are held under lease by the above named company, and this well is drilled under permit No. 6 issued by the West Virginia Department of Mines, Oil and Gas Section, December 22 1930

Elevation of surface at top of well, 702 Spirit ~~Barometer~~

The number of feet of the different sized casings used in the well.

<u>20</u>	feet	<u>20 inch</u>	size. Wood conductor
<u>180</u>	feet	<u>18 inch</u>	size, esg. _____ sized esg.
<u>1200</u>	feet	<u>13 1/4</u>	size, esg. _____ sized esg.
<u>1800</u>	feet	<u>6 5/8</u>	size, esg. _____ sized esg.

\_\_\_\_\_ packer of \_\_\_\_\_ size, set at \_\_\_\_\_

\_\_\_\_\_ packer of \_\_\_\_\_ size, set at \_\_\_\_\_

\_\_\_\_\_ in casing perforated at \_\_\_\_\_ feet to \_\_\_\_\_ feet.

\_\_\_\_\_ in casing perforated at \_\_\_\_\_ feet to \_\_\_\_\_ feet.

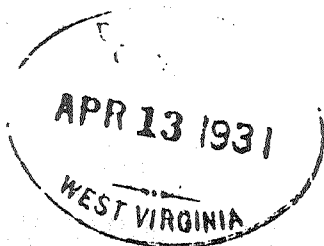
Coal was encountered at none feet; thickness \_\_\_\_\_ inches, and at \_\_\_\_\_ feet; thickness \_\_\_\_\_ inches; and at \_\_\_\_\_ feet; thickness \_\_\_\_\_ inches.

Liners were used as follows: (Give details) none

April 10, 1931 Date.

Approved Columbia Carbon Co Owner.

By Glenn Deauch (Title)



*was to*

Columbian Carbon Co. Company  
 Charleston, W. Va. Address

COMPLETION DATA SHEET  
 NO. 2  
 FORMATION RECORD

Name	Color	Character	Oil, Gas or Water	Top	Bottom	Thickness	Total Depth	Remarks
Clay & Sandy				0	23	23		
Quick Sand				23	175	152		
Blue Slate				175	210	35		
Red Rock				210	235	25		
Blue Slate				235	275	40		
Red Rock				275	320	45		
Slate				320	360	40		
Lime				360	375	15		
Slate				375	385	10		
Sand Water				385	455	70		
Slate				455	495	40		
Sand or Water				495	555	60		
Blue Slate				555	565	10		
Shells				565	610	45		
Slate				610	650	40		
Lime				650	680	30		
Slate				680	700	20		
Sand				700	740	40		
Slate				740	765	25		
Sand				765	780	15		
Slate				780	830	50		
Lime				830	840	10		
Slate				840	885	45		

Well was not shot at ..... feet; well was shot at ..... feet.  
 Salt Fresh water at ..... feet; fresh water at ..... feet.  
 Well was producing hole. dry

..... Approved .....  
 Date Owner

NOTE: All bottom formations must be noted as indicated above and all key-rocks and oil and gas sands must be reported under their proper geological names in the district as well as any local names commonly used in the district for such rocks.