

WW-7
8-30-06



West Virginia Department of Environmental Protection
Office of Oil and Gas
WELL LOCATION FORM: GPS

API: 47-53-00489 WELL NO.: MW-1

FARM NAME: Geologic Carbon Dioxide Storage Demonstration for AEP Mountaineer Plant

RESPONSIBLE PARTY NAME: Appalachian Power Company dba American Electric Power

COUNTY: Mason DISTRICT: Graham

QUADRANGLE: New Haven

SURFACE OWNER: Appalachian Power Company dba American Electric Power

ROYALTY OWNER: Appalachian Power Company dba American Electric Power

UTM GPS NORTHING: 418289.4 4315152.2 N

UTM GPS EASTING: 4315152.2 418289.4 E
GPS ELEVATION: 585.82'

The Responsible Party named above has chosen to submit GPS coordinates in lieu of preparing a new well location plat for a plugging permit or assigned API number on the above well. The Office of Oil and Gas will not accept GPS coordinates that do not meet the following requirements:

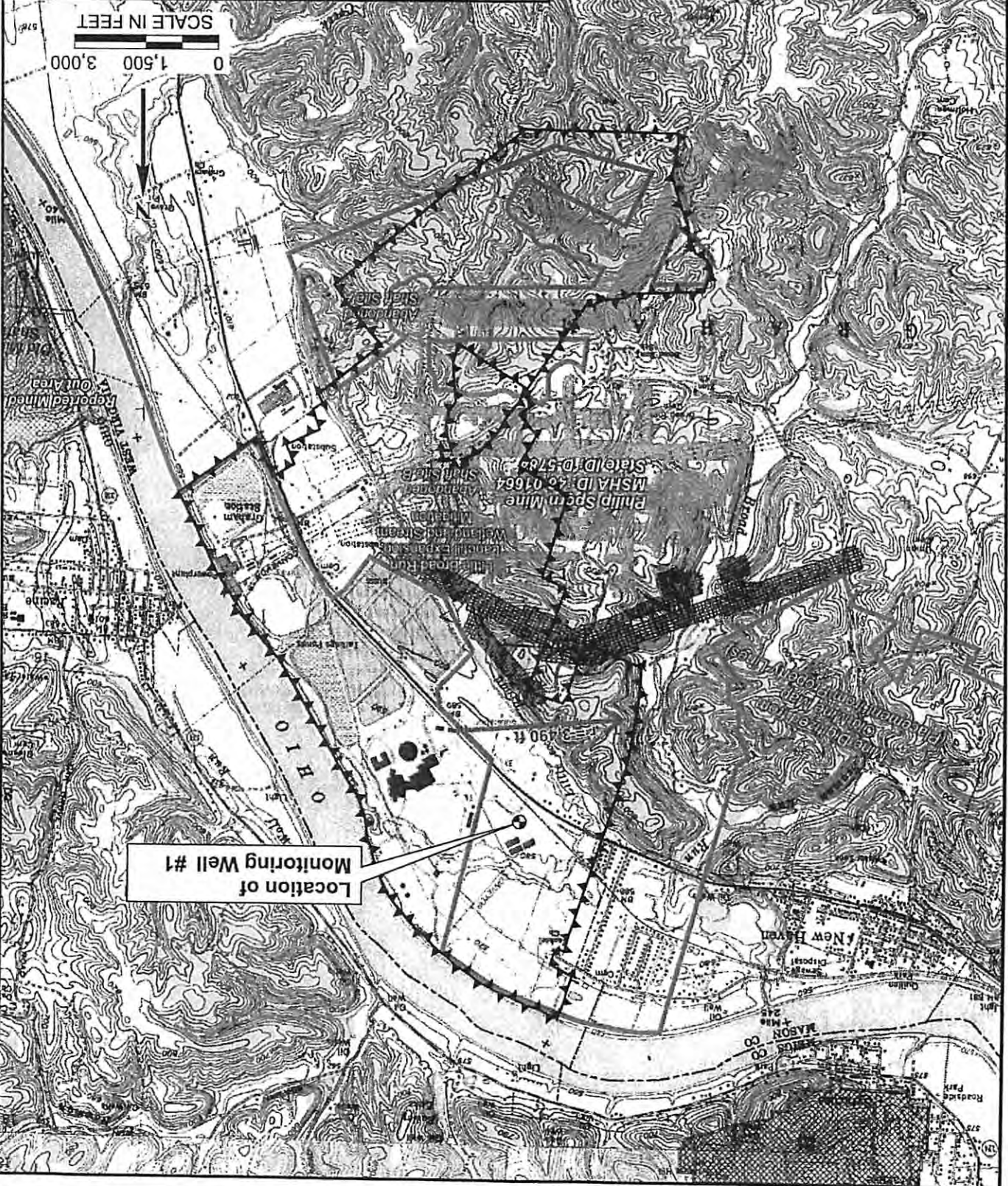
- Datum: NAD 1983, Zone: 17 North, Coordinate Units: meters, Altitude: height above mean sea level (MSL) – meters.
 - Accuracy to Datum – 3.05 meters
 - Data Collection Method: Coordinates were determined by triangulation from monuments on plant property. GPS was not used. Survey performed by Point Survey and Mapping, RECEIVED
Office of Oil and Gas
DEC 06 2016
- Survey grade GPS : Post Processed Differential
Real-Time Differential
- Mapping Grade GPS : Post Processed Differential
Real-Time Differential

4. Letter size copy of the topography map showing the well location.

I the undersigned, hereby certify this data is correct to the best of my knowledge and belief and shows all the information required by law and the regulations issued and prescribed by the Office of Oil and Gas. WV Department of Environmental Protection

Jennifer A. Holmes Consulting Environ Spec 12/16/2016
Signature Title Date

DESIGNED BY DM	Explanation
DRAWN BY LC	▲ AEP Mountaineer Plant Property Boundary
CHECKED BY AEP MOUNTAINEER PLANT - NEW HAVEN, WV	
DATE 03/08	
G005347-REPORTS WELLLOC028.CDR	



03/24/2017

53004894