

LATITUDE 37° 27' 30"

91° 35' 00"

LONGITUDE

WITHIN CIRCLE



T'S OGIS topo location

7.5' loc	<u>1815</u>	15' loc	<u>4.695</u>
	<u>0.10 W</u>	(calc.)	<u>0.10 W</u>

Company _____

Farm _____

Quad WELCH 7 1/2' 4150C

County McDOWELL

District BROWNS CREEK

WELL LOCATION MAP

File No. 047-113

Scale 1:200

Operator U.S.G.S. Elev Surf At Well = 1285

Plat of Gas Well Location

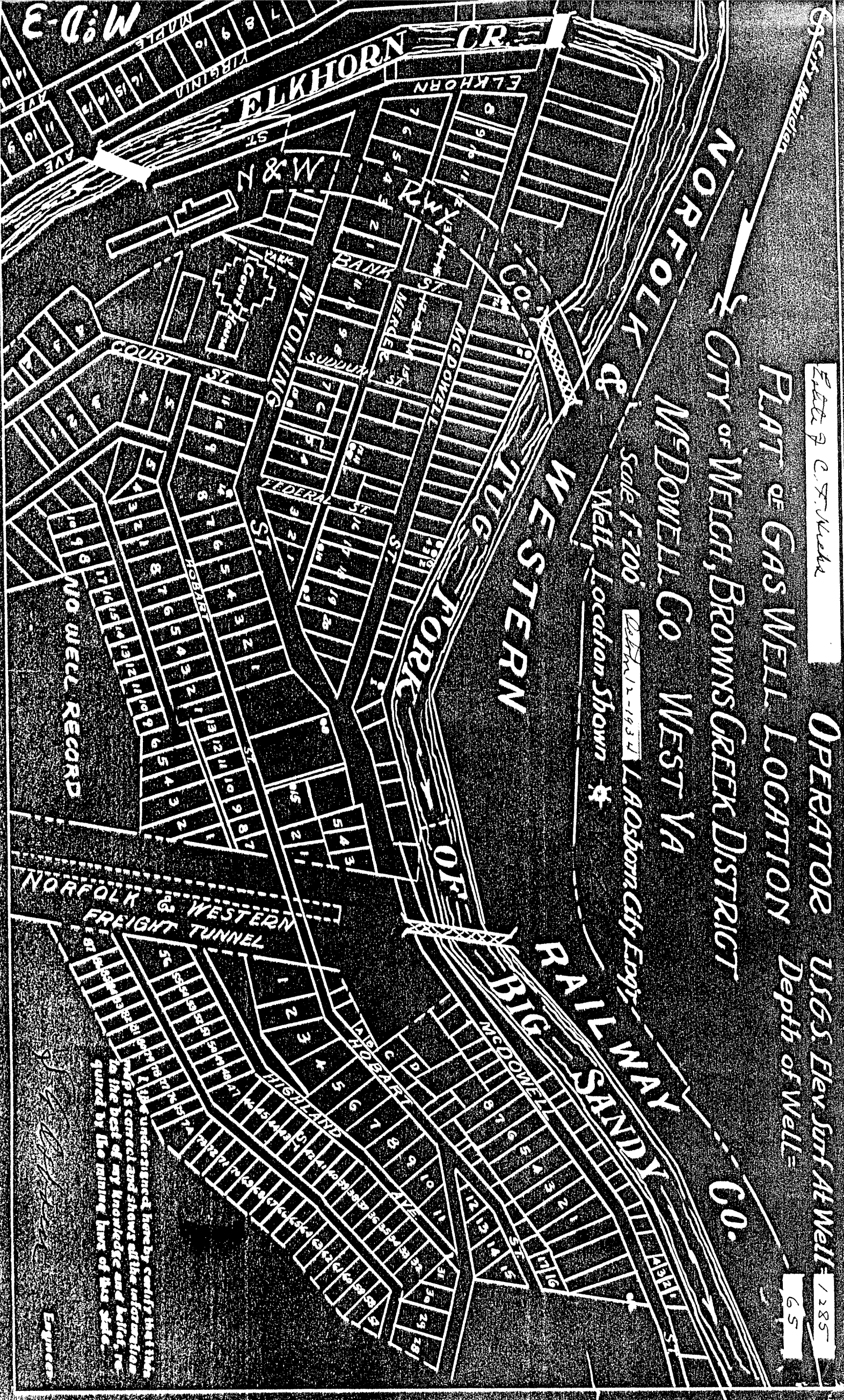
City of Welch, Browns Creek District

65

NORFOLK & WESTERN RAILROAD CO.

MCDOWELL CO. WEST VA

Scale 1:200
Well Location Shown



I, the undersigned, hereby certify that the map is correct and shows all the information to the best of my knowledge and belief, required by the mining laws of this state.

[Signature]
 Engineer

CITY OF WELCH NO. 2.

McD-3.

By J. C. T. Hicks Estate.

Browns Creek Dist.

(NO PERMIT)