

LATITUDE 37° 27' 30"

LONGITUDE 81° 35' 00"



7'5 OGIS topo location

7.5' loc	<u>1.315</u>	15' loc	<u>4.195</u>
	<u>0.24W</u>	(calc.)	<u>0.24W</u>

Company _____

Farm _____

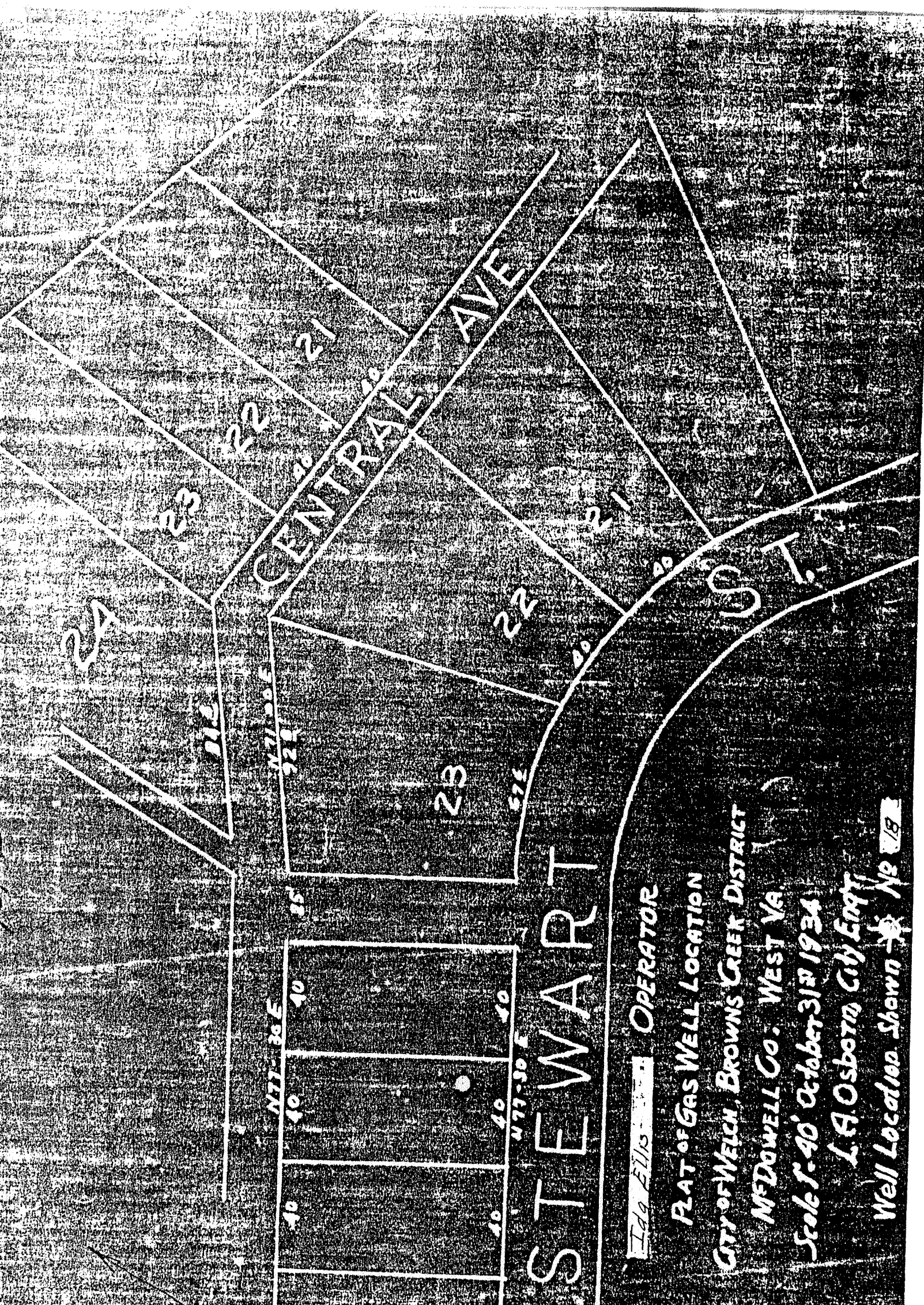
Quad WELCH 7 1/2' + 15' NC

County MCDOWELL

District BROWNS CREEK

WELL LOCATION MAP

File No. 047 - 0116



STEWART

Edo Ellis OPERATOR

PLAT OF GAS WELL LOCATION
 CITY OF WELCH, BROWNS CREEK DISTRICT
 McDOWELL CO. WEST VA.
 Scale 1" = 40' October 31st 1934
 L. A. Osborn, City Engr.
 Well Location Shown ~~As~~ No. 19

NO WELL RECORD

CITY OF WELCH NO. 18.

McD-16.

By Ida Ellis.

Browns Creek Dist.

(NO PERMIT)