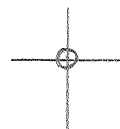


LATITUDE $37^{\circ} 27' 30''$

$81^{\circ} 35' 00''$

LONGITUDE



7'5 OGIS topo location

7.5' loc 1.395
0.36w

15' loc _____
(calc.) _____

Company _____

Farm _____

Quad WELCH 7 1/2' x 15' 00

County MCDOWELL

District BROWNS CREEK

WELL LOCATION MAP

File No. 047-0024

~~761961~~ ~~Davis~~ OPERATOR

MED-24

PLAT OF GAS WELL LOCATION

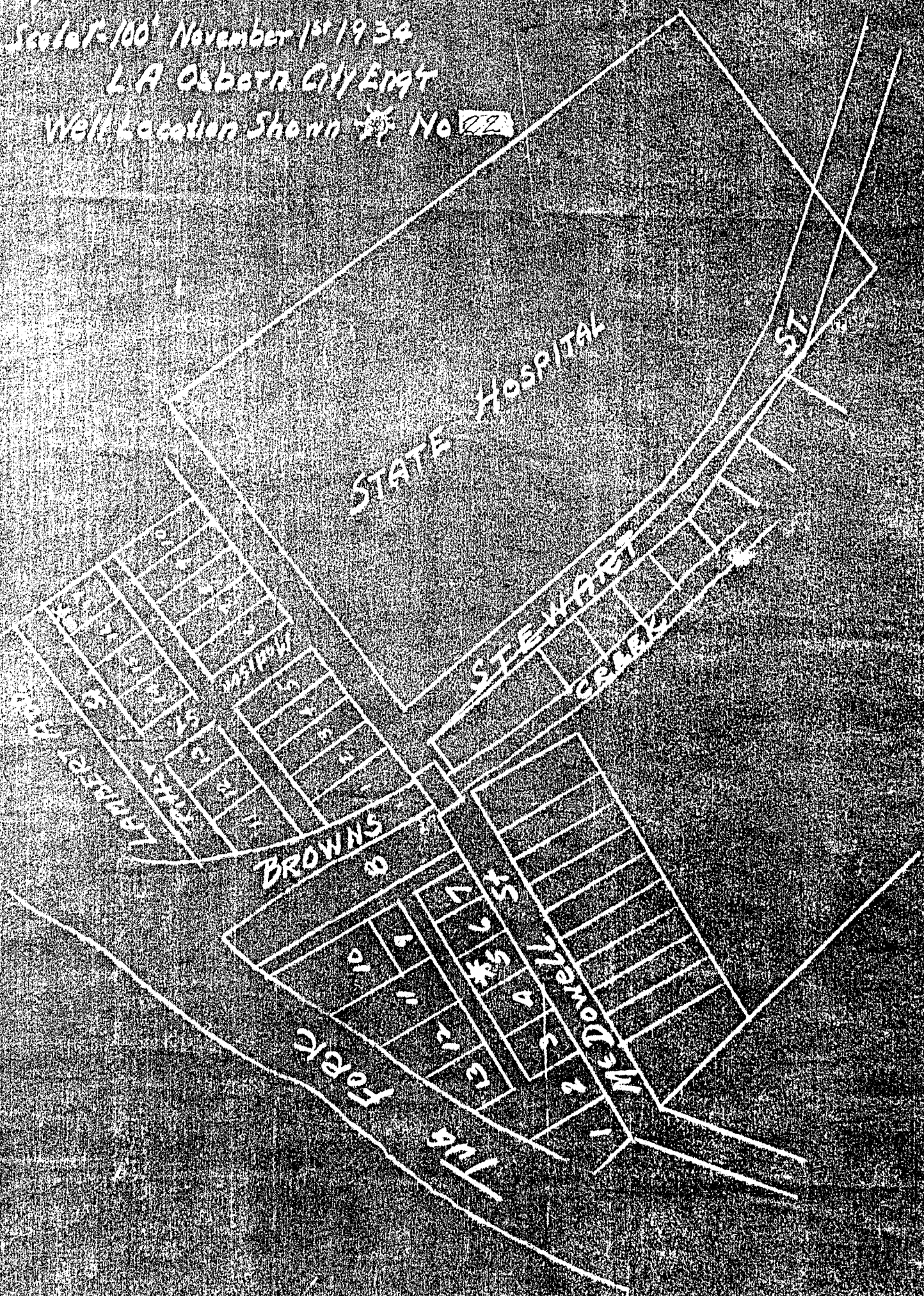
CITY OF WELLS BROWNS CREEK DISTRICT

MCDOWELL CO. WEST VA.

Scale of 100' November 1st 1934

L.A. OSBORN CITY ENGR

Well Location Shown by No. ~~72~~



N.O. WELL RECORD MED-24

HOBART STREET LOT NO. 21.

McD-24.

By J. E. Mallonee.

Browns Creek Dist.