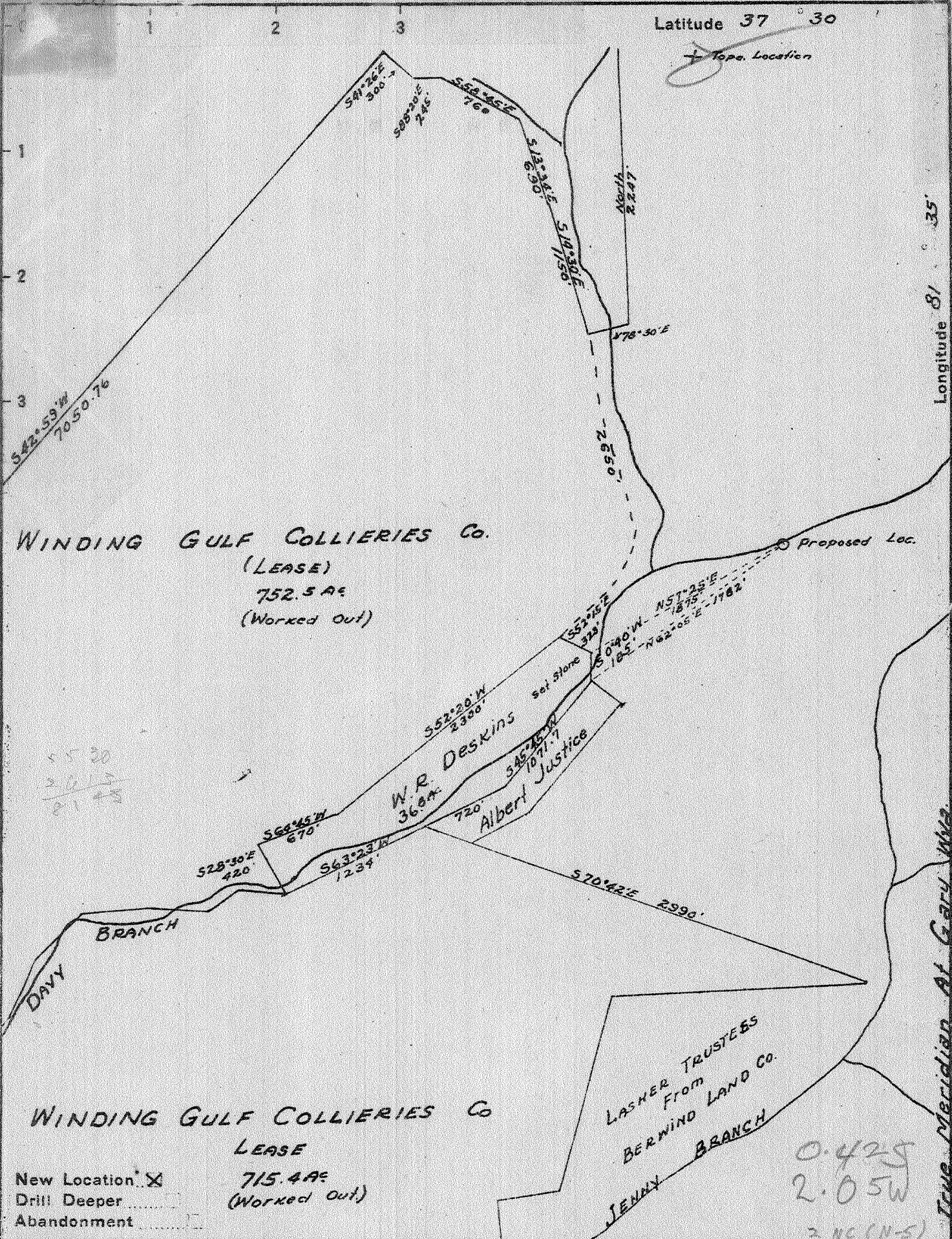


Latitude 37° 30'

+ Topo. Location



WINDING GULF COLLIERIES Co
 LEASE
 715.4 AC
 (Worked Out)

New Location X
 Drill Deeper
 Abandonment

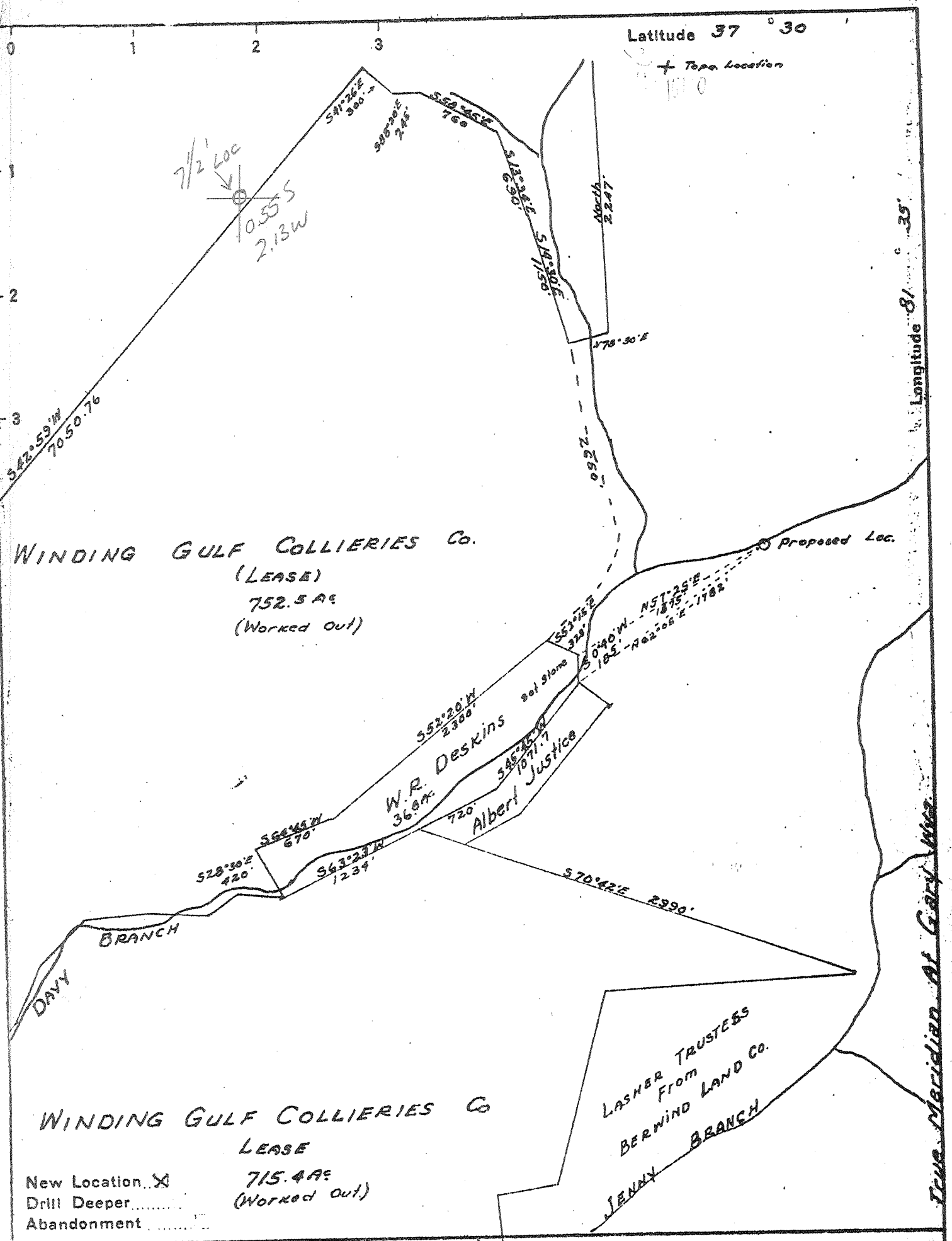
Company GODFREY L. CABOT INC
 Address 900 Union Bldg Charleston Wva
 Farm John Gilbert et al Trustees
 Tract _____ Acres 4000 Lease No. _____
 Well (Farm) No. 2 Serial No. 1069
 Elevation (Spirit Level) 1425.0
 Quadrangle Welch - NC
 County McDowell District Browns Creek
 Engineer Roy Boston
 Engineer's Registration No. _____
 File No. _____ Drawing No. _____
 Date 9-15-42 Scale 1" = 1000'

STATE OF WEST VIRGINIA
 DEPARTMENT OF MINES
 OIL AND GAS DIVISION
 CHARLESTON

WELL LOCATION MAP
 FILE NO. ME D - 25

+ Denotes location of well on United States Topographic Maps, scale 1 to 62,500, latitude and longitude lines being represented by border lines as shown.
 - Denotes one inch spaces on border line of original tracing.

See Vol. XVI, p. 614 5-0 0 unmarked
 Samples 9-D (26-6478') Deep Well



WINDING GULF COLLIERIES Co.
 (LEASE)
 752.5 AC
 (Worked out)

WINDING GULF COLLIERIES Co
 LEASE
 New Location 715.4 AC
 Drill Deeper.....
 Abandonment.....
 (Worked out)

Company GODFREY L. CABOT INC
 Address 900 Union Bldg Charleston WVA
 Farm John Gilbert et al Trustees
 Tract _____ Acres 4000 Lease No. _____
 Well (Farm) No. 2 Serial No. 1069
 Elevation (Spirit Level) 1425.0
 Quadrangle Welch WELCH 7 1/2
 County McDowell District Browns Creek
 Engineer Roy Boston
 Engineer's Registration No. _____
 File No. _____ Drawing No. _____
 Date 9-15-42 Scale 1" = 1000'

STATE OF WEST VIRGINIA
 DEPARTMENT OF MINES
 OIL AND GAS DIVISION
 CHARLESTON

WELL LOCATION MAP
 FILE NO. MED-25

+ Denotes location of well on United States Topographic Maps, scale 1 to 62,500, latitude and longitude lines being represented by border lines as shown.

- Denotes one inch spaces on border line of original tracing.

Deep Well

WEST VIRGINIA DEPARTMENT OF MINES
OIL & GAS DIVISION
WELL RECORD

Permit No. McD 25
Welch Quad.

Dry Hole
CASING & TUBING

Company	Godfrey L. Cabot, Inc.			
Address	Charleston, W.Va.		16	26
Farm	John Gilbert, Trustee	Acres	1425'	13 3/8 200
Location			10	899 Casing shoe
Well No	#2- Ser. 1069	Elev.	1448'	8 5/8 2653 " "
District	Brown Creek	McDowell County	7	3814 Lead Packer aquagel
Surface				
Mineral				
Commenced	Oct. 10, 1942			
Completed	May 8, 1943			Not shot.
Rock Pressure	None			
Fresh Water	50' H.F.			
Salt Water	Water in bottom of Berea Sand.			5 blrs. pr. hr.

Gravel	0	26	Gray Shale	3792	3810
Sand	26	75	Broken Lime	3810	3850
Coal	75	80	Slate & Shells	3850	5653
Sand	80	130	Black Shale	5653	5955
Slate	130	140	White Slate	5955	6001
Sandy Lime	140	195	Brown Shale	6001	6177
Broken Sand	195	230	Corniferous Lime	6177	6226
Black Lime	230	264	Sand & Lime	6226	6235
Sand	264	280	Corniferous Lime	6235	6269
Slate	280	442	Sand & Lime (Oriskany)	6269	6281
Shale	442	455	Lime - <i>Helderberg</i>	6281	6533 T.D.
Slate & Shells	455	488			
Black Lime	488	548	Gas 442'		
White Sand	548	628	Gas 1878 Show of gas		
Shale	628	658	Gas 6036 Gas Pocket		
Lime	658	783			
Coal	783	785			
Lime	785	944			
Slate & Shells	944	1030			
Sand	1030	1060			
Slate & Shells	1060	1100			
Red Rock	1100	1126			
Lime	1126	1137			
Red Rock	1137	1175			
Slate & Shells	1175	1402			
Sand	1402	1519			
Slate	1519	1530			
Lime	1530	1600			
Red Rock	1600	1664			
Sand	1664	1669			
Red Rock	1669	1860			
Sand	1860	1881			
Slate & Shells	1881	2023			
Lime	2023	2055			
Sand	2055	2188			
Red Rock	2188	2193			
Black Lime	2193	2260			
Shale	2260	2270			
Lime	2270	2337			
Slate & Shells	2337	2348			
Sand	2348	2442			
Lime	2442	2633			
Big Lime	2633	3100			
Red Lime	3100	3125			
Red Rock - <i>Macedonia</i>	3125	3130			
Injun Sand	3130	3148			
Gray Shale	3148	3185			
Pink Lime	3185	3310			
Pink Shale	3310	3320			
Shale & Lime	3320	3719			
Brown Shale - <i>Coffee Sh.</i>	3719	3754			
Berea Sand	3754	3792			

6226	6177
1448	1448
4778	4729