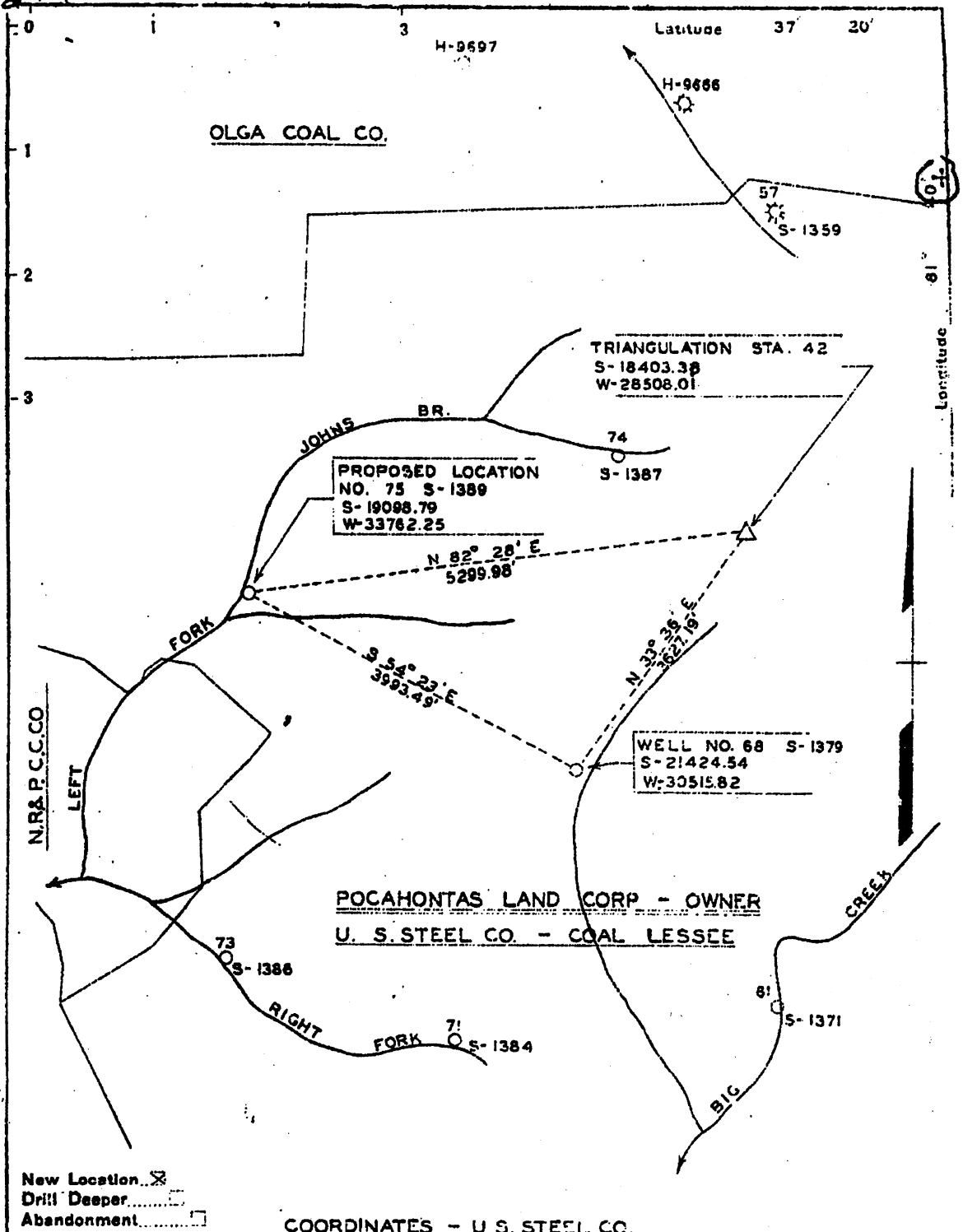


47.00131P



New Location
 Drill Deeper
 Abandonment

COORDINATES - U.S. STEEL CO.

Company GODFREY L. CABOT, INC.
 Address 900 UNION BLDG., CHARLESTON, W.VA.
 Farm POCAHONTAS LAND CORP.
 Tract Acres 47520 Lease No. 5-703
 Well (Farm) No. 75 Serial No. S-1389
 Elevation (Spirit Level) 1603 65'
 Quadrangle WELCH
 County MC DOWELL District BIG CREEK
 Engineer H. J. SIMMONS, JR.
 Engineer's Registration No. 1652
 File No. _____ Drawing No. _____
 Date APRIL 15, 1952 Scale 1" = 1320'

STATE OF WEST VIRGINIA
 DEPARTMENT OF MINES
 OIL AND GAS DIVISION
 CHARLESTON

WELL LOCATION MAP
 FILE NO. MCD-131P

+ Denotes location of well on United States Topographic Maps, scale 1 to 62,500, latitude and longitude lines being represented by border lines as shown.
 - Denotes one inch spaces on border line of original tracing.

"SPECIAL" TRACING CO., INC.
 121 00, N.Y.