


Latitude

Longitude



 .945

 1.00w

Topo Location

7.5' Loc. _____ 15' Loc. 3.825

 _____ (calc.) 1.00w

Company _____

Farm _____

15' Quad Vadis SW
(sec.) _____

7.5' Quad Vadis _____

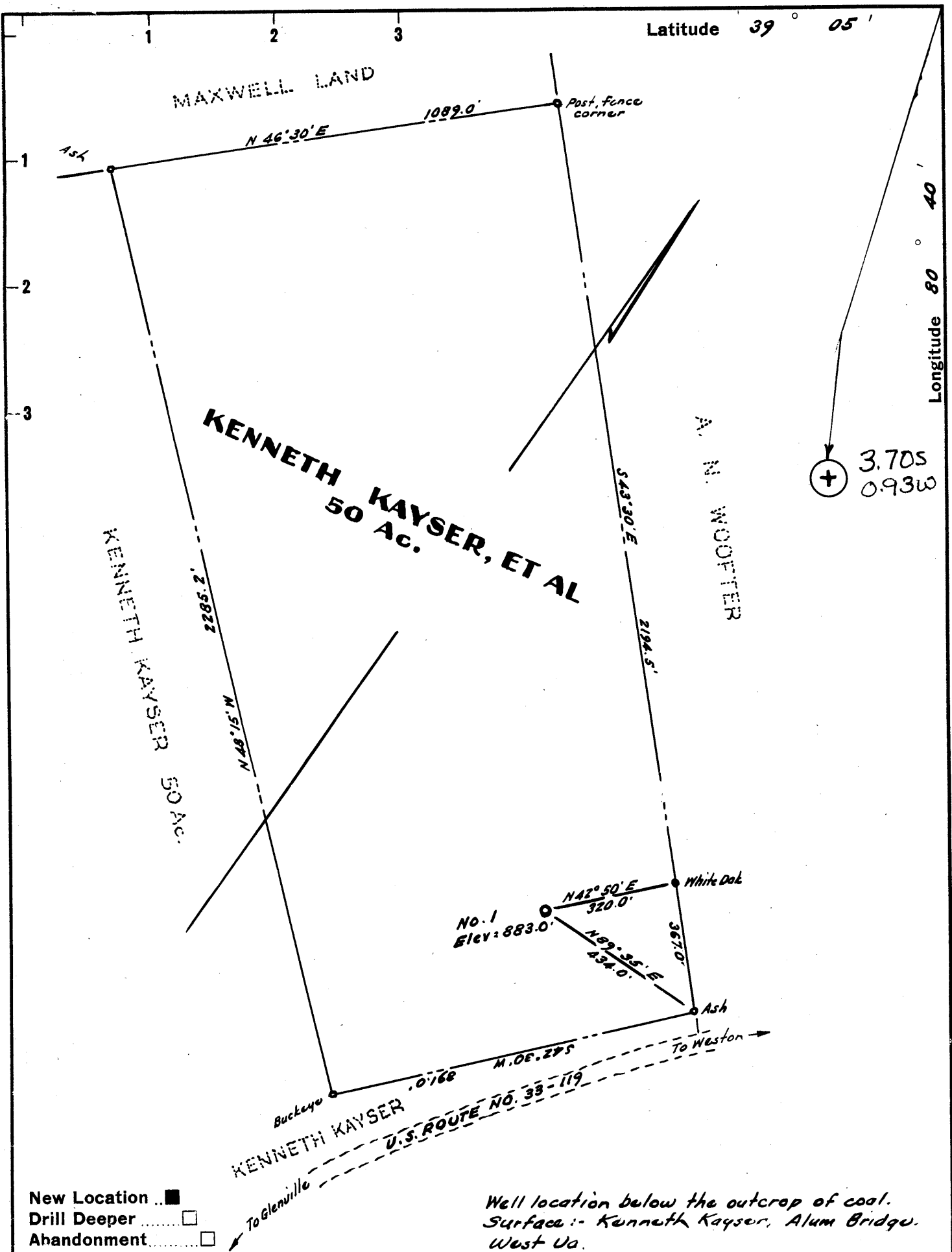
District Freemans Creek _____

WELL LOCATION PLAT

County 041 Permit 520

cancelled - never drilled

DEP website 10a 5/31/2001



Company **A. M. CARLSON**

Address 510 Union Trust Bldg., Parkersburg, W. Va.

Farm Kenneth Kayser, et al.

Tract _____ Acres 50 Lease No. _____

Well (Farm) No. One Serial No. _____

Elevation (Spirit Level) 883'

Quadrangle Vadis **SW**

County Lewis District Freemans Cr.

Engineer W. H. ...

Engineer's Registration No. 1227

File No. _____ Drawing No. _____

Date April 1960 Scale 1" = 300'

STATE OF WEST VIRGINIA
 DEPARTMENT OF MINES
 OIL AND GAS DIVISION
 CHARLESTON

WELL LOCATION MAP
 FILE NO. LEW-520

+ Denotes location of well on United States Topographic Maps, scale 1 to 62,500, latitude and longitude lines being represented by border lines as shown.

- Denotes one inch spaces on border line of original tracing.