

WR-35  
Rev (9-11)

State of West Virginia  
Department of Environmental Protection  
Office of Oil and Gas  
Well Operator's Report of Well Work

DATE: 22 December 2011  
API #: 47-047-00961

Farm name: Daugherty, Ray & Pearl Operator Well No.: Pocahontas #2

LOCATION: Elevation: 1,728.64' Quadrangle: Gary

District: Adkin County: McDowell  
Latitude: 11300 Feet South of 37 Deg. 17 Min. 30 Sec.  
Longitude: 6860 Feet West of 81 Deg. 32 Min. 30 Sec.

Company: Cabot Oil & Gas

Address:	Casing & Tubing	Used in drilling	Left in well	Cement fill up Cu. Ft.
Five Penn Center West Suite 401 Pittsburgh, PA 15276-0120	16"	544'	544'	CTS 775 sx
Agent: Brian Hall	10 3/4"	2940	2940	660 sx
Inspector: Gary Kennedy	7 5/8"	6835	6835	480 sx
Date Permit Issued: 02/15/2011	5 1/2"	7500	929	130 sx
Date Well Work Commenced: 10/27/2011	2 7/8"		5502	N/A
Date Well Work Completed: 12/21/2011				
Verbal Plugging:				
Date Permission granted on:				
Rotary <input type="checkbox"/> Cable <input type="checkbox"/> Rig <input type="checkbox"/>				
Total Vertical Depth (ft):				
Total Measured Depth (ft): 7500				
Fresh Water Depth (ft.): 600				
Salt Water Depth (ft.): N/A				
Is coal being mined in area (N/Y)? N				
Coal Depths (ft.): 600				
Void(s) encountered (N/Y) Depth(s)				

OPEN FLOW DATA (If more than two producing formations please include additional data on separate sheet)

Producing formation ELK Pay zone depth (ft) 5440-5460

Gas: Initial open flow 331 MCF/d Oil: Initial open flow \_\_\_\_\_ Bbl/d

Final open flow N/A MCF/d Final open flow \_\_\_\_\_ Bbl/d

Time of open flow between initial and final tests N/A Hours

Static rock Pressure 1100 psig (surface pressure) after 12 Hours

Second producing formation \_\_\_\_\_ Pay zone depth (ft) \_\_\_\_\_

Gas: Initial open flow \_\_\_\_\_ MCF/d Oil: Initial open flow \_\_\_\_\_ Bbl/d

Final open flow \_\_\_\_\_ MCF/d Final open flow \_\_\_\_\_ Bbl/d

Time of open flow between initial and final tests \_\_\_\_\_ Hours

Static rock Pressure \_\_\_\_\_ psig (surface pressure) after \_\_\_\_\_ Hours

RECEIVED  
Office of Oil & Gas

JAN 09 2012

WV Department of  
Environmental Protection

I certify under penalty of law that I have personally examined and am familiar with the information submitted on this document and all the attachments and that, based on my inquiry of those individuals immediately responsible for obtaining the information I believe that the information is true, accurate, and complete.

05/25/2012

John J. Swella  
Signature

01/05/12  
Date

Were core samples taken? Yes \_\_\_\_\_ No N/A

Were cuttings caught during drilling? Yes \_\_\_\_\_ No N/A

Were Electrical, Mechanical or Geophysical logs recorded on this well? If yes, please list CBL 12/8/2011

**NOTE: IN THE AREA BELOW PUT THE FOLLOWING: 1). DETAILS OF PERFORATED INTERVALS, FRACTURING OR STIMULATING, PHYSICAL CHANGE, ETC. 2). THE WELL LOG WHICH IS A SYSTEMATIC DETAILED GEOLOGICAL RECORD OF THE TOPS AND BOTTOMS OF ALL FORMATIONS, INCLUDING COAL ENCOUNTERED BY THE WELLBORE FROM SURFACE TO TOTAL DEPTH.**

Perforated Intervals, Fracturing, or Stimulating:

Perforated Elk Sand Fault 5440-5460, acidized with 1000 gallons HCl acid

Plug Back Details Including Plug Type and Depth(s): Tuscarora 7132-7192' isolated below cement retainer set @ 6604'

Formations Encountered: \_\_\_\_\_ Top Depth \_\_\_\_\_ / \_\_\_\_\_ Bottom Depth \_\_\_\_\_  
Surface: \_\_\_\_\_

See Attached

DETAILS OF PERFORATED INTERVALS, FRACTURING OR STIMULATING, PHYSICAL CHANGE, ETC.

WELL LOG

FORMATION	COLOR	HARD OR SOFT	TOP FEET	BOTTOM FEET	REMARKS
					Including indication of all fresh and salt water, coal, oil and gas
RAVENCLIFF			217	241	
BIG LIME L.S.			2225	2992	
BEREA SD.			3614	3638	
TULLY L.S.			5410	5464	
HAMILTON SHALE			5464	5822	
MARCELLUS SHALE			5822	6178	
ONONDAGA L.S.			6178	6739	
CACAPON SD			6941	7062	
TUSCARORA SD.			7062	6192	
JUNIATA			7232	-	

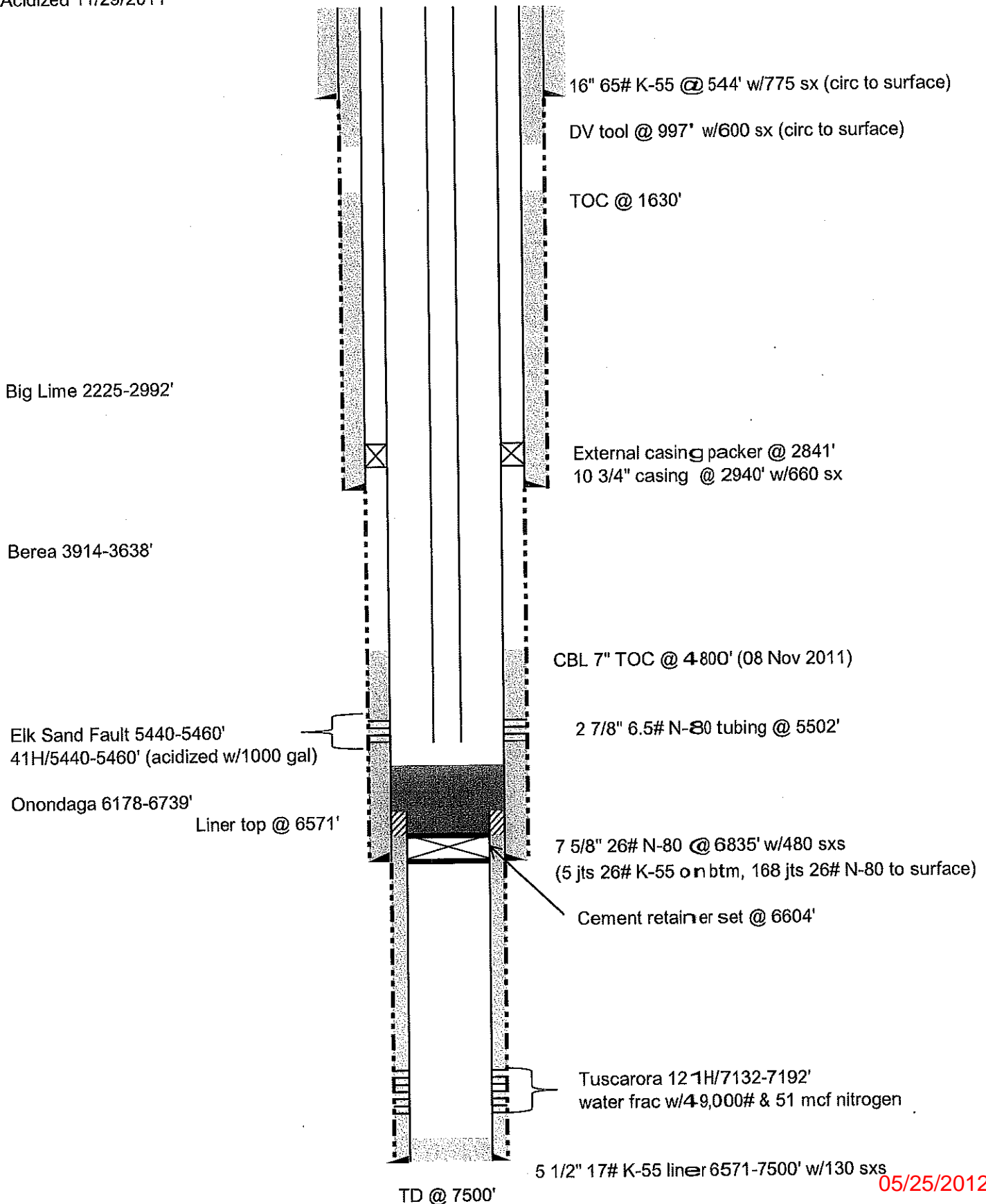
(Attach separate sheets as necessary)

Conoco Inc.  
Well Operator  
By: Sam White  
Date: 3-18-86

Note: Regulation 2.02(i) provides as follows:  
"The term 'log' or 'well log' shall mean a systematic detailed geological record of all formations, including coal, encountered in the drilling of a well."

Pocahontas #2  
47-047-00961  
McDowell County  
Spudded 10/16/85  
Completed 12/10/97  
Acidized 11/29/2011

21 December 2011



05/25/2012