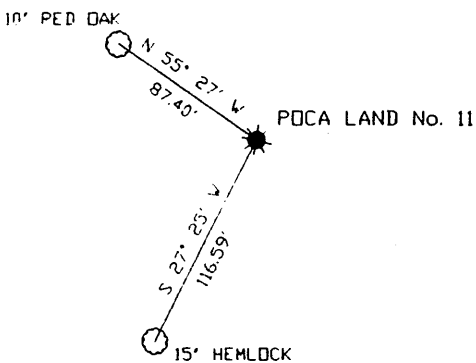


REFERENCES

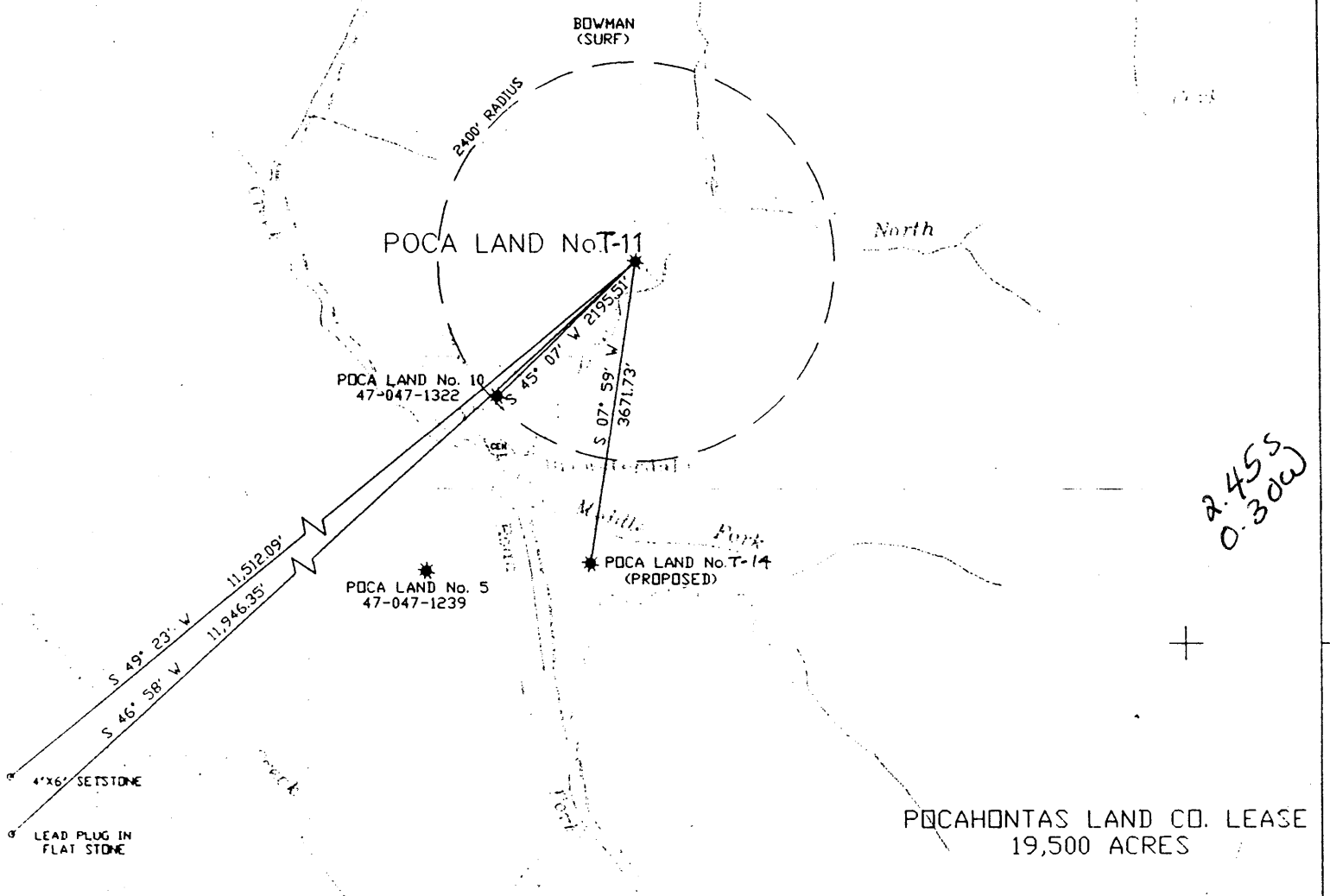


*Jamie*  
*4/23/98*

LATITUDE 37° 17' 30"

LONGITUDE 81° 32' 30"

12,850'



*2.455*  
*0.30W*

(+) DENOTES LOCATION OF WELL ON UNITED STATES TOPOGRAPHIC MAPS

NOTE: TIES TO WELLS AND CORNERS BASED ON GRID NORTH

FILE NO. XL310  
DRAWING NO. PL11PLAT.DWG  
SCALE: 1" = 2000'  
MINIMUM DEGREE OF ACCURACY 1 : 2500  
PROVEN SOURCE OF ELEVATION USGS BM @ CEM  
ELEV. 1805'

I THE UNDERSIGNED, HEREBY CERTIFY THAT THIS PLAT IS CORRECT TO THE BEST OF MY KNOWLEDGE AND BELIEF AND SHOWS ALL THE INFORMATION REQUIRED BY LAW AND THE REGULATIONS ISSUED AND PRESCRIBED BY THE DEPARTMENT OF MINES.

(SIGNED) Philip R. Bailey  
R.P.E. \_\_\_\_\_ R.P.S. X



STATE OF WEST VIRGINIA  
DEPARTMENT OF ENVIRONMENTAL PROTECTION  
OFFICE OF OIL AND GAS



DATE MARCH, 12 19 98  
OPERATOR'S WELL NO. POCA LAND No. T-11

API WELL No. 47-047-01334  
STATE COUNTY PERMIT

WELL TYPE: OIL \_\_\_\_\_ GAS X LIQUID INJECTION \_\_\_\_\_ WASTE DISPOSAL \_\_\_\_\_  
(IF "GAS") PRODUCTION X STORAGE \_\_\_\_\_ DEEP \_\_\_\_\_ SHALLOW X  
LOCATION: ELEVATION 1919.67' WATER SHED NORTH BRANCH OF BIG CREEK  
DISTRICT BIG CREEK COUNTY MCDOWELL  
QUADRANGLE GARY, WV.-VA. 7.5'

SURFACE OWNER POCAHONTAS LAND CO. ACREAGE 29.77 OF 19,500  
OIL & GAS ROYALTY OWNER POCAHONTAS LAND CO. LEASE ACREAGE 19,500  
LEASE NO. \_\_\_\_\_

PROPOSED WORK: DRILL X CONVERT \_\_\_\_\_ DRILL DEEPER \_\_\_\_\_ REDRILL \_\_\_\_\_ FRACTURE OR STIMULATE \_\_\_\_\_ PLUG OFF OLD FORMATION \_\_\_\_\_ PERFORATE NEW FORMATION \_\_\_\_\_  
OTHER PHYSICAL CHANGE IN WELL (SPECIFY) APR 27 1998

PLUG AND ABANDON \_\_\_\_\_ CLEAN OUT AND REPLUG \_\_\_\_\_  
TARGET FORMATION CABOT OIL & GAS ESTIMATED DEPTH 6500' 4675'  
WELL OPERATOR RT 60E & 3RD ST P.O. BOX 454 DESIGNATED AGENT JOHN ABSHIRE  
ADDRESS CLASCOW, WEST VIRGINIA 25086 ADDRESS P.O. BOX 454, CLASCOW, WV 25086

*Mcdow*  
*1334*

WR-35

Date: 5-Nov-98  
API # 47-047-~~8058~~ 1334

State of West Virginia  
Division of Environmental Protection  
Section of Oil and Gas  
Well Operator's Report of Well Work

Farm name: Pocahontas Land Corp. Operator Well No.: Poca Land T-11

LOCATION: Elevation: 1,919.67' Quadrangle: Gary  
District: Big Creek County: McDowell  
Latitude: 12,850 feet South of 37 DEG. 17 MIN. 30 SEC.  
Longitude: 1,620 feet West of 81 DEG. 32 MIN. 30 SEC.

Company: Cabot Oil & Gas Corporation  
400 Fairway Drive: Suite 400  
Coraopolis, PA 15108-4308

Agent: John Abshire  
Inspector: Ofie Helmick  
Permit Issued: 4/23/98  
Well Work Commenced: 5/5/98  
Well Work Completed: 6/2/98  
Verbal Plugging  
Permission granted on:  
Rotary X Cable Rig  
Total Depth (feet) 4136'  
Fresh Water Depths (ft) 41'. 230'  
Salt Water Depths (ft) 1170'

Casing & Tubing Size	Used in Drilling	Left in Well	Cement Fill up Cu. Ft.
16"	22'	22'	
7"	533.25'	533.25'	134 sks Class "A"
4-1/2"	3125.3'	3125.3'	75 sks RFC

Is coal being mined in area (Y / N)? Y  
Coal Depths (ft) 135'-136', 300'-301'

OPEN FLOW DATA

Producing formation Big Lime Pay zone depth (ft) 2932' - 2942'  
Gas: Initial open flow 94 MCF/d Oil: Initial open flow N/A Bbl/d  
Final open flow 531 MCF/d Final open flow N/A Bbl/d  
Time of open flow between initial and final tests 4 Hours  
Static rock pressure 710 psig (surface pressure after 48 Hours)

Second producing formation \_\_\_\_\_ Pay zone depth (ft) \_\_\_\_\_  
Gas: Initial open flow \_\_\_\_\_ MCF/d Oil: Initial open flow \_\_\_\_\_ Bbl/d  
Final open flow \_\_\_\_\_ MCF/d Final open flow \_\_\_\_\_ Bbl/d  
Time of open flow between initial and final tests \_\_\_\_\_ Hours  
Static rock pressure \_\_\_\_\_ psig (surface pressure after \_\_\_\_\_ Hours)

NOTE: ON BACK OF THIS FORM PUT THE FOLLOWING: 1). DETAILS OF PERFORATED INTERVALS, FRACTURING OR STIMULATING, PHYSICAL CHANGE, ETC. 2). THE WELL LOG WHICH IS A SYSTEMATIC DETAILED GEOLOGICAL RECORD OF ALL FORMATIONS, INCLUDING COAL ENCOUNTERED BY THE WELLBORE.

For: CABOT OIL & GAS CORPORATION

By: Ray Prudnick, Jr.  
Date: 11-9-98

M & DOW 1334

## OPEN FLOW DATA

Perf'd Big Lime from 2932' - 2942'. Broke down with 250 gals 15% acid. Displaced with 70 bbls of H<sub>2</sub>O @ 4.3 bpm.  
BDP: 1678 psi. Used 8,000 gals 15% gelled acid. ATP: 1250 psi. MTP: 1462 psi. ATR: 3 bpm. ISIP: 1273 psi.

FORMATION	TOP	BOTTOM	REMARKS
Silt/Shale	0	548	
Ravenclyff	548	700	
Shale	700	920	
Avis	920	970	
Silt/Shale	970	2280	
L. Lime	2280	2410	
Shale	2410	2639	
B. Lime	2639	3460	
Pocono	3460	3760	
Shale	3760	4100	
Berea	4100	4114	
Shale	4114	4136 - TD	