

STATE PLANE COORDINATES

(NAD 27 Datum)

N 114893.2977

E 1767094.0976

Latitude 37 18 45.9484

Longitude 81 48 02.8231

Janice
4/29/98

2637' ←
LATITUDE 37° 20' 00"

LONGITUDE 81° 47' 30"

GEORGIA PACIFIC CORPORATION
TRACT #14

Hite

1.44S
0.48W

47-047-704
Appalachian Exploration
and Development

PROPOSED
WELL
WVC-3820

47-047-01287
CABOT OIL & GAS CORP.

PROPOSED
WELL
WVC-3820

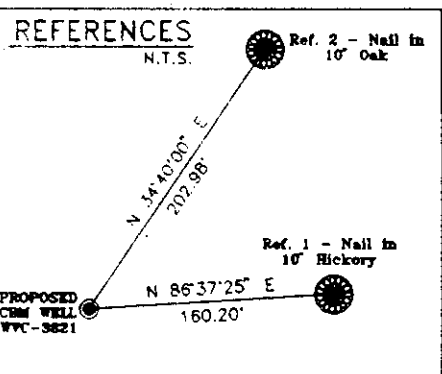
47-047-01288
CABOT OIL & GAS CORP.

PROPOSED
WELL
WVC-3821
LOCATION
El. 2331.80

PROPOSED
WELL
WVC-3822

47-047-704
Appalachian Exploration
and Development

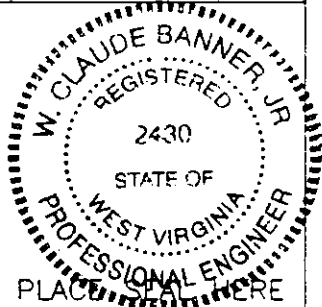
GEORGIA PACIFIC CORPORATION - SURFACE AND COAL
LEASE # 497889 TRACT # 15 5,129.68 ACRES
POCAHONTAS LAND CORPORATION - OIL & GAS ONLY
CABOT OIL AND GAS CORPORATION - OIL & GAS LESSEE
NATIONAL MINES CORPORATION - COAL LESSEE



Note: No water users are known within 1000' of location
(+) Denotes location of well on USGS map.

FILE No. ERE-980203/SF
DRAWING NAME \WVC-3821\GW-PLAT
SCALE 1" = 1000'
MINIMUM DEGREE OF
ACCURACY 1 : 2500
PROVEN SOURCE OF
ELEVATION USGS B.M.
W-191-1958

I THE UNDERSIGNED, HEREBY CERTIFY THAT
THIS PLAT IS CORRECT TO THE BEST OF MY
KNOWLEDGE AND BELIEF AND SHOWS ALL THE
INFORMATION REQUIRED BY LAW AND THE REGU-
LATIONS ISSUED AND PRESCRIBED BY THE
DEPARTMENT OF MINES.
(SIGNED) *R. Claude Banner, Jr.*
R.P.E. _____ R.P.S. _____



STATE OF WEST VIRGINIA
DIVISION OF ENVIRONMENTAL PROTECTION
OFFICE OF OIL AND GAS
NITRO, WV

DATE FEBRUARY 5 19 98
OPERATOR'S WELL No. WVC-3821
API WELL No. 47 - 047 01337-C
STATE COUNTY PERMIT

WELL TYPE: OIL GAS CBM LIQUID INJECTION WASTE DISPOSAL
(IF "GAS") PRODUCTION X STORAGE DEEP SHALLOW

LOCATION: ELEVATION 2331.80 WATER SHED ALDRICH FORK OF BRADSHAW CREEK
DISTRICT SANDY RIVER COUNTY McDOWELL
QUADRANGLE BRADSHAW, WV - VA

SURFACE OWNER GEORGIA PACIFIC CORPORATION ACREAGE 5,129.68
CBM ROYALTY OWNER POCAHONTAS LAND CORPORATION/GEORGIA PACIFIC CORPORATION LEASE ACREAGE 5879.29
LEASE No. 497889

PROPOSED WORK: DRILL X CONVERT DRILL DEEPER REDRILL FRACTURE OR
STIMULATE X PLUG OFF OLD FORMATION PERFORATE NEW
FORMATION OTHER PHYSICAL CHANGE IN WELL (SPECIFY) 6-6 383

PLUG AND ABANDON CLEAN OUT AND REPLUG
TARGET FORMATION PENNSYLVANIAN COALS ESTIMATED DEPTH 2215'

WELL OPERATOR EQUITABLE RESOURCES ENERGY COMPANY DESIGNATED AGENT DAVID DEAN
ADDRESS 1989 EAST STONE DRIVE ADDRESS P.O. DRAWER 40
KINGSPORT, TN 37660 BUCKHANNON, WV 26201

Mc Dow. 1337-C

RECEIVED
 WR-3 Office of Oil & Gas
 Permitting
 SEP 27 1999
 WV Division of
 Environmental Protection

24-Apr-98
 API # 47- 47-01337 C

State of West Virginia
 Division of Environmental Protection
 Section of Oil and Gas

Reviewed [Signature]

Well Operator's Report of Well Work

Farm name: GEORGIA-PACIFIC CORP. Operator Well No.: 3821

LOCATION: Elevation: 2,331.00 Quadrangle: BRADSHAW

District: SANDY RIVER County: MCDOWELL
 Latitude: 7497 Feet South of 37 Deg. 20Min. 0 Sec.
 Longitude 2637 Feet West of 81 Deg. 47 Min. 30 Sec.

Company: EQUITABLE RESOURCES EXP.
 1989 E. STONE DR., P.O. BOX 1983
 KINGSPORT, TN 37662-1983

Agent: DAVID A. DEAN

Inspector: OFIE HELMICK
 Permit Issued: 04/27/98
 Well work Commenced: 5/24/99
 Well work Completed: 7/8/99
 Verbal Plugging
 Permission granted on: N/A
 Rotary X Cable _____ Rig GASCO #1
 Total Depth (feet) LTD=2200 DTD=2210
 Fresh water depths (ft) N/A
 Salt water depths (ft) N/A

Casing & Tubing Size	Used in Drilling	Left in Well	Cement Fill Up Cu. Ft.
12 3/4	20	20	GROUTED
8 5/8	303	303	94
4 1/2	2161	2161	305
2 3/8	2129	2129	---

Is coal being mined in area (Y/N)? NO
 Coal Depths (ft): 304/443/460/913/970/1042
 1066/1193/1388/1462/1508/1638/1658/1701/1889
 2000/2012
 OPEN FLOW DATA

Producing formation POCO 7,6-R,6,5,5-L,4 & 3 Pay zone depth (ft) 1636-1895
 Gas: Initial open flow N/A MCF/d Oil: Initial open flow N/A Bbl/d
 Final open flow 17 MCF/d Final open flow N/A Bbl/d
 Time of open flow between initial and final tests 6 Hours
 Static rock Pressure 260 psig (surface pressure) after 48 Hours

Second producing formation FIRECREEK, POC09&8 Pay zone depth (ft) 1385-1508.
 Gas: Initial open flow _____ MCF/d Oil: Initial open flow _____ Bbl/d
 Final open flow _____ MCF/d Final open flow _____ Bbl/d
 Time of open flow between initial and final tests _____ Hours
 Static rock Pressure _____ psig (surface pressure) after _____ Hours

NOTE: ON BACK OF THIS FORM PUT THE FOLLOWING: 1). DETAILS OF PERFORATED INTERVALS, FRACTURING OR STIMULATING, PHYSICAL CHANGE, ETC. 2). THE WELL LOG WHICH IS A SYSTEMATIC DETAILED GEOLOGICAL RECORD OF ALL FORMATIONS, INCLUDING COAL ENCOUNTERED BY THE WELLBORE.

For: Michael P Jaskoski
 EQUITABLE RESOURCES EXP. INC.
 By: MICHAEL P JASKOSKI, MANAGER DRILLING/WORKOVER
 Date: SEPTEMBER 22, 1999

OCT 04 1999

MCDOWELL 1337C

API #: 47-047-01337 C
 OPERATOR WELL #: WVC3821
 FARM NAME: GEORGIA PACIFIC CORP

- 1) DETAILS OF PERFORATED INTERVALS, FRACTURING OR STIMULATING, PHYSICAL CHANGE, ETC.

RECEIVED
 Office of Oil & Gas
 Permitting
 SEP 27 1999
 WV Division of
 Environmental Protection

1ST STAGE - PERFORATED POCO SEAMS # 7,6-R,6,5,5-L,4 & 3 FROM 1636 - 1895 WITH 12 PERFORATIONS. FRACTURED ON 6/10/99 BY HALLIBURTON WITH 70Q LE FOAM; 14493# 12/20 SAND, 595000 SCF N2; 465 TOTAL BBLs FLUID. BREAKDOWN PRESSURE 1718 PSI, MAX PRESSURE 4069 PSI, AVERAGE PRESSURE 3818 PSI, ISIP 1850 PSI, 1 MIN SIP 1190 PSI, 5 MIN SIP 996 PSI. AVERAGE INJECTION RATE 27.5 BPM.

2ND STAGE - PERFORATED FIRECREEK, POCO 9 & 8 FROM 1385 - 1508.5 WITH 12 PERFORATIONS. FRACTURED ON 6/10/98 BY HALLIBURTON WITH 70Q LE FOAM; 16158# 12/20 SAND, 724000 SCF N2. BREAKDOWN PRESSURE 2469, MAX PRESSURE 4003 PSI, AVERAGE PRESSURE 3696 PSI, ISIP 1719 PSI, 1-MIN SIP 1705 PSI, 5-MIN SIP 1682 PSI. AVERAGE INJECTION RATE 26.75 BPM

- 2) THE WELL LOG, WHICH IS A SYSTEMATIC DETAILED GEOLOGICAL RECORD OF ALL FORMATIONS, INCLUDING COAL ENCOUNTERED BY THE WELLBORE.

SAND, SHALE & THIN COALS	0	1385
FIRECREEK	1385	1387
SAND, SHALE & THIN COALS	1387	1459
POCO #9	1459	1461
SAND, SHALE & THIN COALS	1461	1507
POCO #8	1507	1508
SAND, SHALE & THIN COALS	1508	1636
POCO #7	1636	1637
SAND, SHALE & THIN COALS	1637	1659
POCO #6-RIDER	1659	1661
SAND, SHALE & THIN COALS	1661	1698
POCO #6	1698	1699
SAND, SHALE & THIN COALS	1699	1745
POCO #5	1745	1746
SAND, SHALE & THIN COALS	1746	1790
POCO #5-LEADER	1790	1791
SAND, SHALE & THIN COALS	1791	1838
POCO #4	1838	1839
SAND, SHALE & THIN COALS	1839	1895
POCO #3	1895	1896
SAND, SHALE & THIN COALS	1896	2200
LOGGER'S TOTAL DEPTH		2200
DRILLER'S TOTAL DEPTH		2210