

WW-7
8-30-06



West Virginia Department of Environmental Protection
Office of Oil and Gas
WELL LOCATION FORM: GPS

API: 47-047-01337 WELL NO.: WV 793817 (WVC-3821)

FARM NAME: Georgia - Pacific Corp.

RESPONSIBLE PARTY NAME: EQT Production Company

COUNTY: McDowell 47 DISTRICT: Sandy River 6

QUADRANGLE: Bradshaw 7.5' 261

SURFACE OWNER: Heartwood Forestland Fund IV

ROYALTY OWNER: Plum Creek Timberlands LP, et al.

UTM GPS NORTHING: 4129882

UTM GPS EASTING: 429054 GPS ELEVATION: 710 m (2328 ft)

The Responsible Party named above has chosen to submit GPS coordinates in lieu of preparing a new well location plat for a plugging permit or assigned API number on the above well. The Office of Oil and Gas will not accept GPS coordinates that do not meet the following requirements:

1. Datum: NAD 1983, Zone: 17 North, Coordinate Units: meters, Altitude: height above mean sea level (MSL) – meters.
2. Accuracy to Datum – 3.05 meters
3. Data Collection Method:

Survey grade GPS : Post Processed Differential
Real-Time Differential

Mapping Grade GPS X: Post Processed Differential X
Real-Time Differential

4. **Letter size copy of the topography map showing the well location**

I the undersigned, hereby certify this data is correct to the best of my knowledge and belief and shows all the information required by law and the regulations issued and prescribed by the Office of Oil and Gas.

Stacy Okun
Signature

PS # 2180
Title

RECEIVED
Office of Oil and Gas
JUL 08 2014
WV Department of Environmental Protection
6/25/14
Date

Topo Quad: Bradshaw 7.5'

Scale: 1" = 2000'

County: McDowell

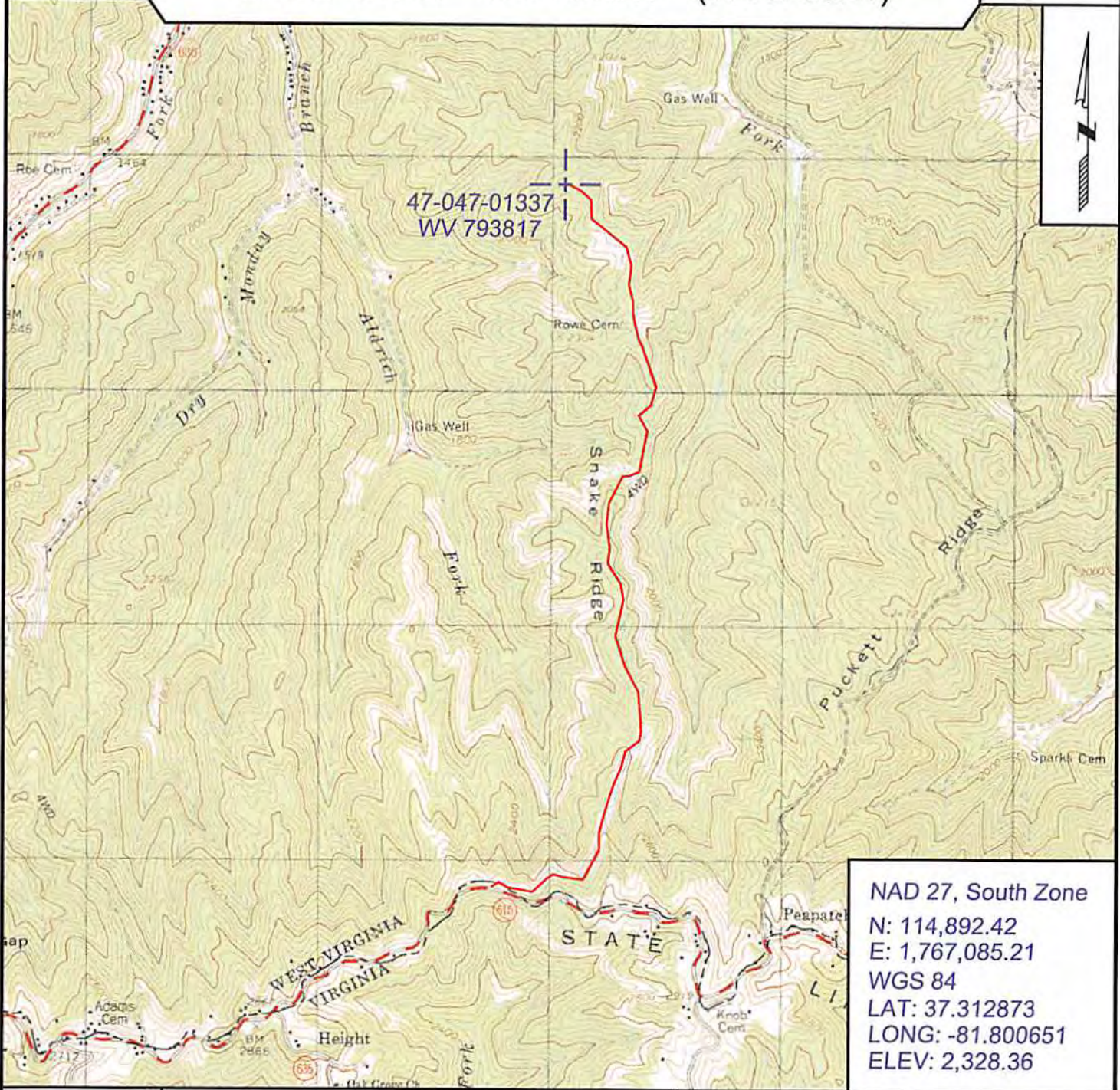
Date: June 13, 2014

District: Sandy River

Project No: 20-37-00-08

47-047-01337 WV 793817 (WVC-3821)

Topo



NAD 27, South Zone
 N: 114,892.42
 E: 1,767,085.21
 WGS 84
 LAT: 37.312873
 LONG: -81.800651
 ELEV: 2,328.36



SURVEYING AND MAPPING SERVICES PERFORMED BY:
ALLEGHENY SURVEYS, INC.

1-800-482-8606
 237 Birch River Road
 Birch River, WV 26610
 PH: (304) 649-8606
 FAX: (304) 649-8608

PREPARED FOR:

EQT Production Company
 P.O. Box 280
 Bridgeport, WV 26330