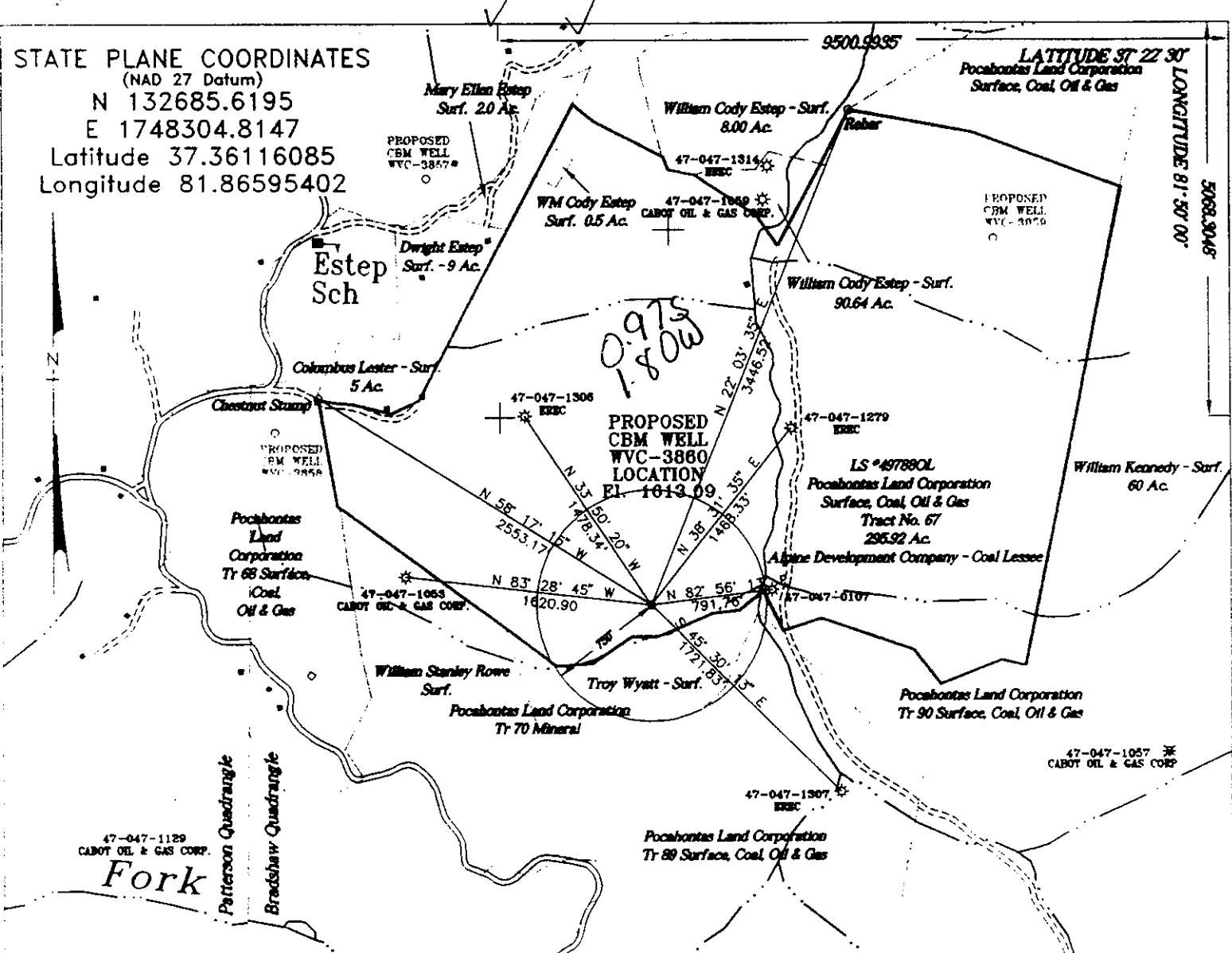


STATE PLANE COORDINATES  
(NAD 27 Datum)  
N 132685.6195  
E 1748304.8147  
Latitude 37.36116085  
Longitude 81.86595402

LATITUDE 37 22 30  
Pocahontas Land Corporation  
Surface, Coal, Oil & Gas

5068.9046  
LONGITUDE 81 50 00



REFERENCES  
N.T.S.

Ref. 2 - PK-Nail in  
10' Black Oak

S 72° 40' 01" W  
182.65'

S 57° 40' 06" W  
226.96'

Ref. 1 - PK-Nail in  
6" Twin Beech

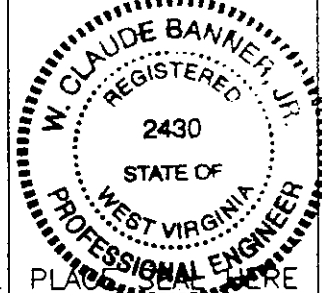
Pocahontas Land Corporation - Surface Tract  
Lease # 497880L Tract # 67 295.92 Ac.  
Pocahontas Land Corporation - Mineral  
Cabot Oil and Gas Corporation - Oil and Gas Lessee  
Alpine Development Company - Coal Lessee

Note: (+) Denotes location of well on USGS map.  
No water users are known within 1000' of location.

FILE No. ERE-9803198/SP  
DRAWING NAME \WVC-3860\GW-PLAT  
SCALE 1" = 1000'  
MINIMUM DEGREE OF  
ACCURACY 1 : 2500  
PROVEN SOURCE OF  
ELEVATION USGS B.M.  
ESTEP

I THE UNDERSIGNED, HEREBY CERTIFY THAT  
THIS PLAT IS CORRECT TO THE BEST OF MY  
KNOWLEDGE AND BELIEF AND SHOWS ALL THE  
INFORMATION REQUIRED BY LAW AND THE REGU-  
LATIONS ISSUED AND PRESCRIBED BY THE  
DEPARTMENT OF MINES.

(SIGNED) W. Claude Banner, Jr.  
R.P.E. \_\_\_\_\_ R.P.S. \_\_\_\_\_



STATE OF WEST VIRGINIA  
DIVISION OF ENVIRONMENTAL PROTECTION  
OFFICE OF OIL AND GAS  
NITRO, WV

DATE MARCH 30 19 98  
OPERATOR'S WELL No. WVC-3860  
API WELL No. 47 - 047 01341C  
STATE COUNTY PERMIT

WELL TYPE: OIL GAS CBM LIQUID INJECTION WASTE DISPOSAL  
(IF "GAS") PRODUCTION X STORAGE DEEP SHALLOW  
LOCATION: ELEVATION 1613.09 WATER SHED WHITE OAK BRANCH OF MEATHOUSE FORK  
DISTRICT SANDY RIVER COUNTY McDOWELL  
QUADRANGLE BRADSHAW, WV - VA  
SURFACE OWNER Pocahontas Land Corporation ACREAGE 295.92  
CBM ROYALTY OWNER Pocahontas Land Corporation LEASE ACREAGE 15379.43  
LEASE No. 497880L  
PROPOSED WORK: DRILL X CONVERT DRILL DEEPER REDRILL FRACTURE OR  
STIMULATE X PLUG OFF OLD FORMATION PERFORATE NEW  
FORMATION OTHER PHYSICAL CHANGE IN WELL (SPECIFY) 6-6 328

PLUG AND ABANDON CLEAN OUT AND REPLUG  
TARGET FORMATION PENNSYLVANIAN COALS ESTIMATED DEPTH  
WELL OPERATOR EQUITABLE RESOURCES ENERGY COMPANY DESIGNATED AGENT DAVID DEAN  
ADDRESS 1989 EAST STONE DRIVE ADDRESS P.O. DRAWER 40  
KINGSPORT, TN 37660 BUCKHANNON, WV 26201

MAY 14 1998

ME DOV 1341-C

WR-35

29-Apr-98  
API # 47- 47-01341 C

State of West Virginia  
Division of Environmental Protection  
Section of Oil and Gas

Well Operator's Report of Well Work

Farm name: Pocahontas Land Co. Operator Well No.: WVC 3858

LOCATION: Elevation: 2,048.00 Quadrangle: BRADSHAW

District: SANDY RIVER County: MCDOWELL  
Latitude: 3935 Feet South of 37 Deg. 22Min. 30 Sec.  
Longitude 11951 Feet West of 81 Deg. 50 Min. 0 Sec.

Company: EQUITABLE RESOURCES EXP.  
1989 E. STONE DR., P.O. BOX 1983  
KINGSPORT, TN 37662-1983

Agent: DAVID A. DEAN

Inspector: OFIE HELMICK  
Permit Issued: 04/29/98  
Well work Commenced: 8/6/98  
Well work Completed: 9/4/98  
Verbal Plugging  
Permission granted on: N/A  
Rotary  Cable  Rig  
Total Depth (feet) LTD-2238 DTD-2246  
Fresh water depths (ft) 135

Salt water depths (ft) 755/809/1388  
1816/2246

Is coal being mined in area (Y/N)? N  
Coal Depths (ft): 130/738/900/1287  
1476/1590/1612/1838/1847/1886

Size	Used in Drilling	Left in Well	Cement Fill Up Cu. Ft.
11 3/4	38	38	GROUTED
8 5/8	319	319	94
4 1/2	2213	2213	635
2 3/8	2097	2097	N/A

OPEN FLOW DATA

Producing formation POCO 6 RIDER, 6 & 5 Pay zone depth (ft) - 1888.5  
 Gas: Initial open flow N/A MCF/d Oil: Initial open flow Bbl/d  
 Final open flow 69 MCF/d Final open flow Bbl/d  
 Time of open flow between initial and final tests 6 Hours  
 Static rock Pressure 325 psig (surface pressure) after 48 Hours  
 COMMINGLED LT FIRECREEK 1476 -  
 Second producing formation BECKLEY, FIRECREEK, Pay zone depth (ft) 1612.5  
 Gas: Initial open flow MCF/d Oil: Initial open flow Bbl/d  
 Final open flow MCF/d Final open flow Bbl/d  
 Time of open flow between initial and final tests Hours  
 Static rock Pressure psig (surface pressure) after Hours

NOTE: ON BACK OF THIS FORM PUT THE FOLLOWING: 1). DETAILS OF PERFORATED INTERVALS, FRACTURING OR STIMULATING, PHYSICAL CHANGE, ETC. 2). THE WELL LOG WHICH IS A SYSTEMATIC DETAILED GEOLOGICAL RECORD OF ALL FORMATIONS, INCLUDING COAL ENCOUNTERED BY THE WELLBORE.

RECEIVED  
Office of Oil & Gas  
Permitting

FEB 05 1999

WV Division of  
Environmental Protection

For: Michael Jaskoski  
EQUITABLE RESOURCES EXP. INC.  
By: MICHAEL P JASKOSKI  
Date: 1/29/99

FEB 19 1999

McDow 1341C

API #: 47-047-01341 C  
OPERATOR WELL #: WVC3858  
FARM NAME: POCAHONTAS LAND

1) DETAILS OF PERFORATED INTERVALS, FRACTURING OR STIMULATING, PHYSICAL CHANGE, ETC.

1<sup>ST</sup> STAGE - PERFORATED POCO SEAMS # 6 RIDER, 6, & 5 FROM 1838.5 - 1888 WITH 14 PERFORATIONS. FRACTURED ON 8/26/98 BY DOWELL WITH 70Q LE FOAM; 30194# 12/20 SAND, 960465 SCF N2, 460 TOTAL BBLs FLUID. BREAKDOWN PRESSURE 1872 PSI, MAX PRESSURE 3832 PSI, AVERAGE PRESSURE 3582 PSI, ISIP 1972 PSI, 1 MIN SIP 1966 PSI, 5 MIN SIP 1795 PSI. AVERAGE INJECTION RATE 27 BPM..

2<sup>ND</sup> STAGE - PERFORATED BECKLEY, FIRECREEK, LT FIRECREEK FROM 1476 - 1612.5 WITH 14 PERFORATIONS. FRACTURED ON 8/27/98 BY DOWELL WITH 70Q LE FOAM; 30225# 12/20 SAND, 970797 SCF N2. BREAKDOWN PRESSURE 1950, MAX PRESSURE 3931 PSI, AVERAGE PRESSURE 3559 PSI, ISIP 1520 PSI, 1-MIN SIP 1415 PSI, 5-MIN SIP 1218 PSI. AVERAGE INJECTION RATE 37 BPM

2) THE WELL LOG WHICH IS A SYSTEMATIC DETAILED GEOLOGICAL RECORD OF ALL FORMATIONS, INCLUDING COAL ENCOUNTERED BY THE WELLBORE.

SAND, SHALE & THIN COALS	0	1476
BECKLEY	1476	1479
SAND, SHALE & THIN COALS	1479	1590
FIRECREEK	1590	1594
SAND, SHALE & THIN COALS	1594	1612
LT FIRECREEK	1612	1613
SAND, SHALE & THIN COALS	1613	1838
POCO #6 RIDER	1838	1840
SAND, SHALE & THIN COALS	1840	1847
POCO #6	1847	1852
SAND, SHALE & THIN COALS	1852	1886
POCO #5	1886	1888
SAND, SHALE & THIN COALS	1888	2238
LOGGER'S TOTAL DEPTH		2238
DRILLER'S TOTAL DEPTH		2246

