

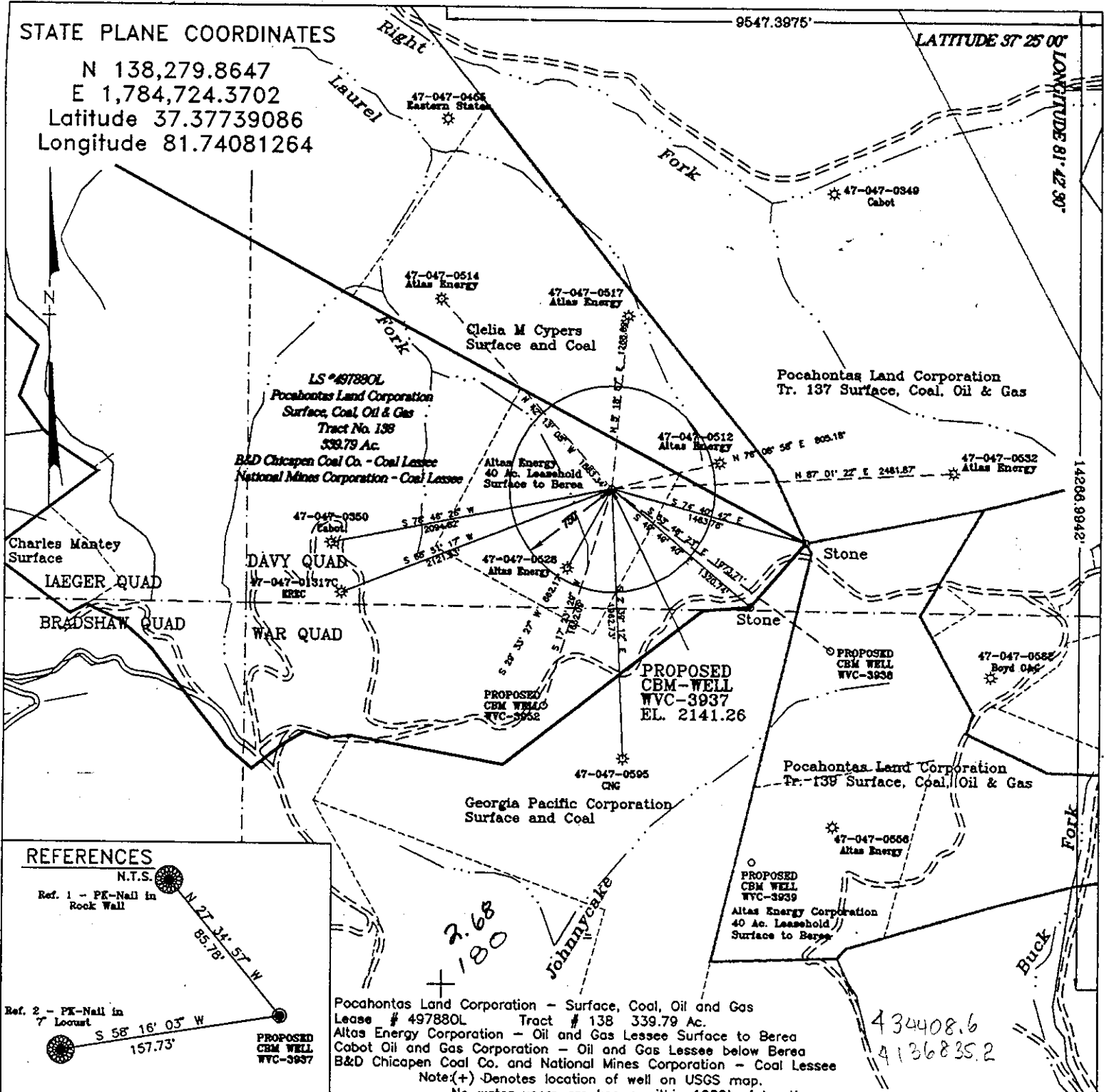
STATE PLANE COORDINATES

N 138,279.8647
 E 1,784,724.3702
 Latitude 37.37739086
 Longitude 81.74081264

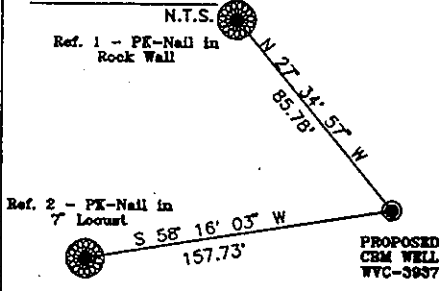
9547.3975'

LATITUDE 37° 25' 00"

LONGITUDE 81° 42' 30"



REFERENCES

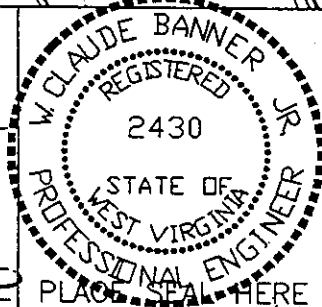


Pocahontas Land Corporation - Surface, Coal, Oil and Gas Lease # 497880L Tract # 138 339.79 Ac.
 Atlas Energy Corporation - Oil and Gas Lessee Surface to Berea
 Cabot Oil and Gas Corporation - Oil and Gas Lessee below Berea
 B&D Chicapen Coal Co. and National Mines Corporation - Coal Lessee
 Note: (+) Denotes location of well on USGS map.
 No water users are known within 1000' of location.

43408.6
 4136835.2

FILE No. ERE-980707/SP
 DRAWING NAME \EQUITABL\PLT-3937
 SCALE 1" = 1000'
 MINIMUM DEGREE OF ACCURACY 1 : 2500
 PROVEN SOURCE OF ELEVATION WVC-3697/USGS BM 151 RHP 1959 EL. 2156

I THE UNDERSIGNED, HEREBY CERTIFY THAT THIS PLAT IS CORRECT TO THE BEST OF MY KNOWLEDGE AND BELIEF AND SHOWS ALL THE INFORMATION REQUIRED BY LAW AND THE REGULATIONS ISSUED AND PRESCRIBED BY THE DEPARTMENT OF MINES.
 (SIGNED) W. Claude Banner Jr.
 R.P.E. _____ R.P.S. _____



STATE OF WEST VIRGINIA
 DIVISION OF ENVIRONMENTAL PROTECTION
 OFFICE OF OIL AND GAS
 NITRO, WV

DATE JULY 7 19 98
 OPERATOR'S WELL No. WVC-3937
 API WELL No. 47 - 047 - 01359C

WELL TYPE: OIL GAS CBM LIQUID INJECTION WASTE DISPOSAL STATE COUNTY PERMIT
 (IF "GAS") PRODUCTION X STORAGE DEEP SHALLOW

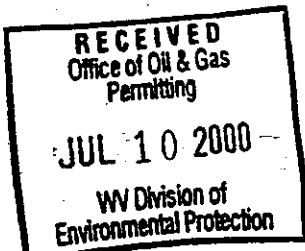
LOCATION: ELEVATION 2141.26 WATER SHED LAUREL FORK OF CRANE CREEK OF DRY FORK
 DISTRICT SANDY RIVER COUNTY McDOWELL
 QUADRANGLE DAVY, WV

SURFACE OWNER Pocahontas Land Corporation ACREAGE 339.79
 CBM ROYALTY OWNER Pocahontas Land Corporation LEASE ACREAGE 15379.43
 LEASE No. 497880L

PROPOSED WORK: DRILL X CONVERT DRILL DEEPER REDRILL FRACTURE OR
 STIMULATE X PLUG OFF OLD FORMATION PERFORATE NEW
 FORMATION OTHER PHYSICAL CHANGE IN WELL (SPECIFY) 6-6 285

PLUG AND ABANDON CLEAN OUT AND REPLUG
 TARGET FORMATION PENNSYLVANIAN COALS ESTIMATED DEPTH 1960'
 WELL OPERATOR EQUITABLE RESOURCES ENERGY COMPANY DESIGNATED AGENT DAVID DEAN
 ADDRESS 1989 EAST STONE DRIVE ADDRESS P.O. DRAWER 40
KINGSPORT, TN 37660 BUCKHANNON, WV 26201

MCDOWELL 1359C



State of West Virginia
Division of Environmental Protection
Section of Oil and Gas

Reviewed _____

Well Operator's Report of Well Work

Farm Name: POCAHONTAS LAND CORP

Operator Well No.: WVC 3937

LOCATION: Elevation: 2,141.26 Quadrangle: DAVY
District: SANDY RIVER County: McDOWELL

Latitude: 14266 Feet South of Deg. 37 Minutes 25 Seconds 0
Longitude: 9547 Feet West of Deg. 81 Minutes 42 Seconds 30

Company: EQUITABLE PRODUCTION COMPANY
P.O. Box 2347, 1710 Pennsylvania Avenue
Charleston, WV 25328

Casing & Tubing Size	Used in Drilling	Left in Well	Cement Fill Up Cu. Ft.
12-3/4"	30'	30'	GRTD
8-5/8"	315'	315'	136 FT³
4-1/2"	1960'	1960'	329 FT³
2-3/8"		1851'	

Agent: Richard D. Smeltzer

Inspector: OFIE HELMICK
Permit Issued: 08/24/1998
Well work commenced: 12/06/99
Well work completed: 12/30/99

Verbal Plugging
Permission granted on: _____
Rotary Rig Cable Rig _____
Total Depth 1982 feet
Fresh water depths (ft) _____

Salt water depths (ft) _____

Is coal being mined in area?
Coal Depths (ft): Ranged from 127-1759'

OPEN FLOW DATA

Producing formation Poco 6,6R,3,Berkley,Firecreek,Poco 8 Pay Zone Depth (ft): _____ See Attach for details

Gas: Initial open flow _____ Bbl/d
Final open flow 13 Final open flow: _____
Time of open flow between initial and final tests _____ Hours
Static rock pressure 82 psig (surface pressure) after 48 Hours

Second producing formation _____ Pay Zone Depth (ft): _____

Gas: Initial open flow _____ MCF/d Oil: Initial open flow _____ Bbl/d
Final open flow: _____ MCF/d Final open flow: _____
Time of open flow between initial and final tests _____ Hours
Static rock pressure _____ psig (surface pressure) after _____ Hours

NOTE: ON BACK OF THIS FORM PUT THE FOLLOWING: 1) DETAILS OF PERFORATED INTERVALS, FRACTURING OR STIMULATING, PHYSICAL CHANGE, ETC. 2) THE WELL LOG WHICH IS A SYSTEMATIC DETAILED GEOLOGICAL RECORD OF ALL FORMATIONS, INCLUDING COAL ENCOUNTERED BY THE WELLBORE.

For: EQUITABLE PRODUCTION COMPANY

By: Barbara Hubbard
Date: 8-5-00

MCDOW 1359C

AUG 04 2000

**EQUITABLE PRODUCTION COMPANY
WR-35 COMPLETION REPORT - Attachment
Well Treatment Summary**

Well: WVC-3937

API# 47-047-01359 C

Date	12/13/99	12/16/99				
Type Frac						
Acid, N ₂ , Foam, Water	X-Link Gel	X-Link Gel				
Zone Treated	Poco 6,6R,3	Berkley Firecreek Poco 8				
# Perfs	16	19				
From - To:	1498-1752	1049-1344				
BD Pressure @ psi	1686	1980				
ATP psi	3031	2885				
Avg. Rate, B=B/M, S= SCF/M	15 B	15 B				
Max. Treat Press psi	4365	4000				
ISIP psi	NA	3082				
Frac Gradient						
10 min S-I Pressure	NA	1488(5 min)				
Material Volume						
Sand-sks	101	138				
Water-bbl	234	314				
SCF N ₂	126,000	124,605				
Acid-gal	500 gal 7-1/2%					
NOTES:	Screened out	Screened out				

RECEIVED
Office of Oil & Gas
Permitting
JUL 10 2000
WV Division of
Environmental Protection

TOP	BASE	FORMATION	REMARKS*
0	20	Overburden	
20	110	Sand Shale	
110	127	Sandy Shale	
127	129	Coal	
129	169	Sandy Shale	
169	170	Coal	
170	290	Sand Shale	
290	348	Sandy Shale	
348	367	Sand Shale	
367	368	Coal	
368	386	Sand Shale	
386	387	Coal	
387	450	Sand Shale	
450	451	Coal	
451	525	Sandy Shale	
525	609	Sand Shale	
609	730	Sandy Shale	
735		Sewell A	
860		Welch	
951		L. Raleigh	
1049		Berkley	

1205	Firecreek
1270	L. Firecreek
1343	Poco 8
1424	Poco 6
1498	Poco 4
1634	Poco 2
1688	Poco 1
1751	Squire Jim

M^eDow 1359C

AUG 04 2000