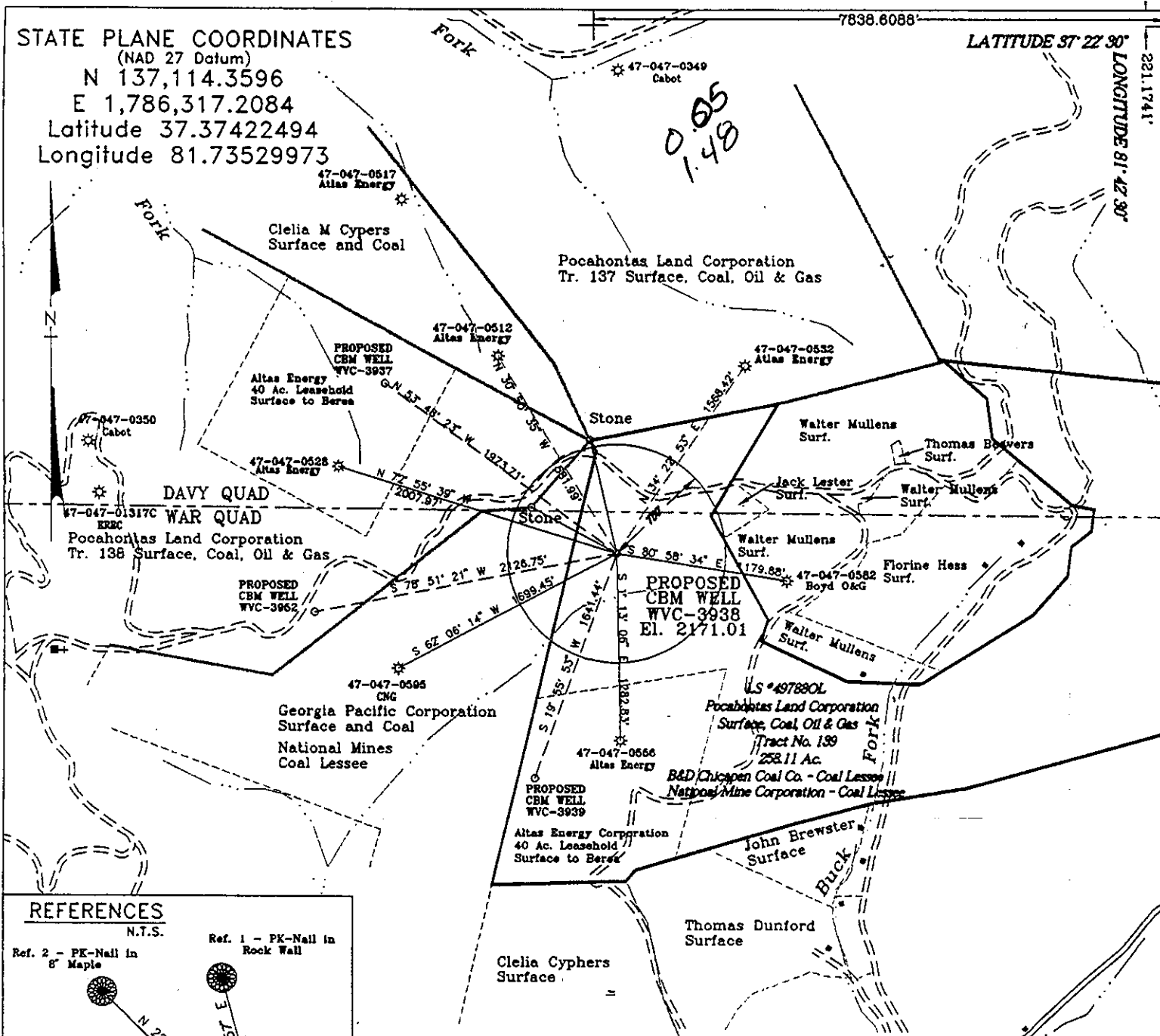


STATE PLANE COORDINATES
(NAD 27 Datum)
N 137,114.3596
E 1,786,317.2084
Latitude 37.37422494
Longitude 81.73529973

7838.8088

LATITUDE 37° 22' 30"

LONGITUDE 81° 42' 30"



0.05
1.48

REFERENCES
N.T.S.

Ref. 1 - PK-Nail in Rock Wall
Ref. 2 - PK-Nail in 8" Maple

PROPOSED CBM WELL WVC-3938

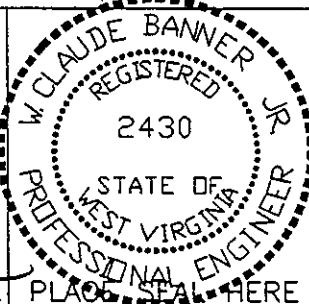
Pocahontas Land Corporation - Surface, Coal, Oil and Gas Lease # 497880L Tract # 139 258.11 Ac.
Cabot Oil and Gas Corporation - Oil and Gas Lessee
B&D Chicapen Coal Co. and National Mine Corporation - Coal Lessee
Note: (+) Denotes location of well on USGS map.

434808.0
4136430.7

FILE No. ERE-980707/SP
DRAWING NAME \EQUITABL\PLT-3938
SCALE 1" = 1000'
MINIMUM DEGREE OF ACCURACY 1 : 2500
PROVEN SOURCE OF ELEVATION WVC-3697/USGS B.M. 151 RHP 1959 El. 2156

I THE UNDERSIGNED, HEREBY CERTIFY THAT THIS PLAT IS CORRECT TO THE BEST OF MY KNOWLEDGE AND BELIEF AND SHOWS ALL THE INFORMATION REQUIRED BY LAW AND THE REGULATIONS ISSUED AND PRESCRIBED BY THE DEPARTMENT OF MINES.

(SIGNED) *Claude Banner Jr*
R.P.E. _____ R.P.S. _____



STATE OF WEST VIRGINIA
DIVISION OF ENVIRONMENTAL PROTECTION
OFFICE OF OIL AND GAS
NITRO, WV

DATE JULY 7, 19 98
OPERATOR'S WELL No. WVC-3938
API WELL No. 47 - 047 - 01360C

WELL TYPE: OIL X GAS X CBM X LIQUID INJECTION X WASTE DISPOSAL X STATE COUNTY PERMIT
(IF "GAS") PRODUCTION X STORAGE X DEEP X SHALLOW

LOCATION: ELEVATION 2171.01 WATER SHED JOHNNYCAKE HOLLOW OF DRY FORK
DISTRICT BIG CREEK COUNTY McDOWELL
QUADRANGLE WAR, WV

SURFACE OWNER Pocahontas Land Corporation ACREAGE 258.11
CBM ROYALTY OWNER Pocahontas Land Corporation LEASE ACREAGE 15379.43
LEASE No. 497880L

PROPOSED WORK: DRILL X CONVERT X DRILL DEEPER X REDRILL X FRACTURE OR STIMULATE X PLUG OFF OLD FORMATION X PERFORATE NEW FORMATION X OTHER PHYSICAL CHANGE IN WELL (SPECIFY) 6-6 285

PLUG AND ABANDON X CLEAN OUT AND REPLUG X
TARGET FORMATION PENNSYLVANIAN COALS ESTIMATED DEPTH 1950' AUG 3
WELL OPERATOR EQUITABLE RESOURCES ENERGY COMPANY DESIGNATED AGENT DAVID DEAN
ADDRESS 1989 EAST STONE DRIVE ADDRESS P.O. DRAWER 40
KINGSPORT, TN 37660 BUCKHANNON, WV 26201

WR-35

24-Aug-98
API # 47- 047-01360 C

State of West Virginia
Division of Environmental Protection
Section of Oil and Gas

Reviewed _____

Well Operator's Report of Well Work

Farm Name: Pocahontas Land Corp Operator Well No.: WVC 3938
LOCATION: Elevation: 2,171.00 Quadrangle: War
District: Big Creek County: McDowell

Latitude: 221 Feet South of Deg. 37 Minutes 22 Seconds 30
Longitude: 7838 Feet West of Deg. 81 Minutes 42 Seconds 30

Company: Equitable Production Company
P.O. Box 2347, 1710 Pennsylvania Avenue
Charleston, WV 25328

Agent: Richard Smeltzer

Inspector: Ofie Helmick

Permit Issued: 08/24/1998

Well work commenced: 12/02/99

Well work completed: 12/19/99

Verbal Plugging

Permission granted on: _____

Rotary Rig Cable Rig _____

Total Depth 1950 feet

Fresh water depths (ft) 195

Salt water depths (ft) _____

Is coal being mined in area?

Coal Depths (ft): Depths ranged from 127-1763'

Casing & Tubing Size	Used in Drilling	Left in Well	Cement Fill Up Cu. Ft.
12-3/4"	16'	16'	grtd
8-5/8"	316'	316'	130 FT ³
4-1/2"	1913'	1913'	318 FT ³
2-3/8"		1878'	

RECEIVED
Office of Oil & Gas
Permitting

JUL 06 2000

WV Division of
Environmental Protection

OPEN FLOW DATA

Producing formation Poco 6,3,1/Beckley/Firecreek/Poco 9 & 8

Pay Zone Depth (ft): _____

See Attach
for details

Gas: Initial open flow _____ Bbl/d

Final open flow 22

Final open flow: _____

Time of open flow between initial and final tests _____

Hours _____

Static rock pressure 65

psig (surface pressure) after _____

48 Hours

Second producing formation _____

Pay Zone Depth (ft): _____

Gas: Initial open flow _____ MCF/d

Oil: Initial open flow _____ Bbl/d

Final open flow: _____ MCF/d

Final open flow: _____

Time of open flow between initial and final tests _____

Hours _____

Static rock pressure _____

psig (surface pressure) after _____

Hours _____

NOTE: ON BACK OF THIS FORM PUT THE FOLLOWING: 1) DETAILS OF PERFORATED INTERVALS, FRACTURING OR STIMULATING, PHYSICAL CHANGE, ETC. 2) THE WELL LOG WHICH IS A SYSTEMATIC DETAILED GEOLOGICAL RECORD OF ALL FORMATIONS, INCLUDING COAL ENCOUNTERED BY THE WELLBORE.

For: BLAZER ENERGY CORPORATION

By: Barbara Hubbard
Date: 7-5-00

Mc Dow 1360 C

AUG 04 2000

**EQUITABLE PRODUCTION COMPANY
WR-35 COMPLETION REPORT - Attachment
Well Treatment Summary**

Well: WVC 3938

API# 47-047-01360 C

Date	12/10/99	12/10/99			
Type Frac - Acid, N ₂ , Foam, Water	X-Link Gel	X-Link Gel			
Zone Treated	Poco 6,3,1	Beckley/ Firecreek Poco 9 & 8			
# Perfs From - To:	14 1515-1764	15 1058-1340			
BD Pressure @ psi	1687	1402			
ATP psi	2401	2434			
Avg. Rate, B=B/M, S= SCF/M	20.7 B	17.1 B			
Max. Treat Press psi	2780	2909			
ISIP psi	1604	1149			
Frac Gradient	1.41	1.39			
10 min S-I Pressure	1228 (5 min)	880 (5 min)			
Material Volume					
Sand-sks	160	157			
Water-bbl	389	329			
SCF N ₂	151,000	137,000			
Acid-gal					
NOTES:					

TOP	BASE	FORMATION	REMARKS*
0	10	Fill	
10	127	Shale & Sandstone	
127	129	Coal	
129	283	Sandstone Shale	1" water @ 195'
283	284	Coal	
284	349	Sandstone Shale	
349	364	Sandstone	
364	365	Coal	
365	393	Sandstone	
393	395	Coal	
395	420	Sandy Shale Sandstone	
420	421	Coal	
421	450	Sandstone	
450	451	Coal	
451	743	Sandstone Sandy Shale	
743	744	Coal	
744	845	Sandstone	
845	864	Sandy Shale	
865		Welch	
952		L. Raleigh	
1057		Beckley	
1195		Fire Creek	
1218		L. Fire Creek	

RECEIVED
 Office of Oil & Gas
 Permitting
JUL 06 2000
 WVC Division of
 Environmental Protection

1275
1339
1426
1516
1650
1703
1763
1950

Poca 9
Poca 8
Poca 6
Poca 4
Poca 2
Poca 1
Squire Jim
TD

GT @ TD=NS & drill collars=TSTM

RECEIVED
Office of Oil & Gas
Permitting
JUL 06 2000
WV Division of
Environmental Protection

Mc Dow 1360 C

AUG 04 2000