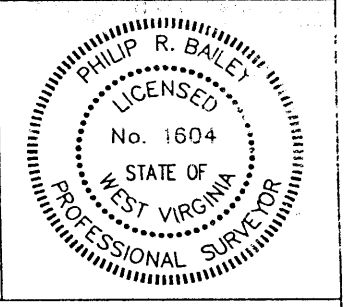


(+) DENOTES LOCATION OF WELL ON UNITED STATES TOPOGRAPHIC MAPS

FILE NO. KL318
 DRAWING NO. T-15PLAT.DWG
 SCALE: 1" = 1000'
 MINIMUM DEGREE OF ACCURACY 1 : 2500
 PROVEN SOURCE OF ELEVATION USGS BM @ CEM
 ELEV. 1805'

I THE UNDERSIGNED, HEREBY CERTIFY THAT THIS PLAT IS CORRECT TO THE BEST OF MY KNOWLEDGE AND BELIEF AND SHOWS ALL THE INFORMATION REQUIRED BY LAW AND THE REGULATIONS ISSUED AND PRESCRIBED BY THE DEPARTMENT OF MINES.
 (SIGNED) Philip Bailey 2-19-99
 R.P.E. _____ R.P.S. X



STATE OF WEST VIRGINIA
 DEPARTMENT OF ENVIRONMENTAL PROTECTION
 OFFICE OF OIL AND GAS

DATE FEBRUARY 19 99
 OPERATOR'S WELL NO. POCA LAND No. T-15

API WELL No. 47 - 047 - 01402 STATE COUNTY PERMIT

WELL TYPE: OIL ___ GAS X LIQUID INJECTION ___ WASTE DISPOSAL ___
 (IF "GAS") PRODUCTION X STORAGE ___ DEEP ___ SHALLOW X

LOCATION: ELEVATION 2128.27' WATER SHED NORTH BRANCH OF BIG CREEK
 DISTRICT BIG CREEK COUNTY McDOWELL
 QUADRANGLE GARY, WV.-VA. 7.5'

SURFACE OWNER POCAHONTAS LAND CO. ACREAGE 432.79 OF 19,500
 OIL & GAS ROYALTY OWNER POCAHONTAS LAND CO. LEASE ACREAGE 19,500
 LEASE NO. _____

PROPOSED WORK: DRILL X CONVERT ___ DRILL DEEPER ___ REDRILL ___ FRACTURE OR
 STIMULATE ___ PLUG OFF OLD FORMATION ___ PERFORATE NEW 6-6-00
 FORMATION ___ OTHER PHYSICAL CHANGE IN WELL (SPECIFY) _____

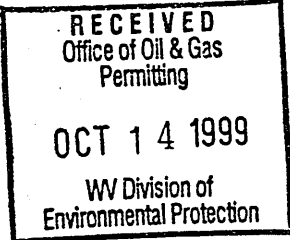
PLUG AND ABANDON ___ CLEAN OUT AND REPLUG X

TARGET FORMATION Berea ESTIMATED DEPTH 6500' **FEB 19 1999**

WELL OPERATOR CABOT OIL & GAS DESIGNATED AGENT JOHN ABSHIRE
 ADDRESS RT 60E & 3RD ST P.O. BOX 454 ADDRESS P.O. BOX 454 GLASGOW, WV 25086

M. D. W. 1402

WR-35



Date: 4-Oct-99
API # 47-047-01402

State of West Virginia
Division of Environmental Protection
Section of Oil and Gas
Well Operator's Report of Well Work

Reviewed _____

Farm name: Pocahontas Land Corp. Operator Well No.: Poca Land T-15

LOCATION: Elevation: 2,128' Quadrangle: Gary
District: Big Creek County: McDowell
Latitude: 11,335 feet South of 37 DEG. 17 MIN. 30 SEC.
Longitude: 12,210 feet West of 81 DEG. 30 MIN. 0 SEC.

Company: Cabot Oil & Gas Corporation
400 Fairway Drive: Suite 400
Coraopolis, PA 15108-4308

Agent: John Abshire
Inspector: Ofie Helmick
Permit Issued: 7/14/99
Well Work Commenced: 9/14/99
Well Work Completed: 10/1/99
Verbal Plugging
Permission granted on:
Rotary Cable
Total Depth (feet) 3198'
Fresh Water Depths (ft) 400'
Salt Water Depths (ft) 830'

Casing & Tubing Size	Used in Drilling	Left in Well	Cement Fill up Cu. Ft.
12-3/4"	20'	20'	
7"	578.91'	578.91'	125 sks Class "A"
4-1/2"	3175'	3175'	65 sks Class "A"

Is coal being mined in area (Y / N)?
Coal Depths (ft) 170'-171', 404'-405'

OPEN FLOW DATA

Producing formation Big Lime Pay zone depth (ft) 3084' - 3102'
Gas: Initial open flow TSTM MCF/d Oil: Initial open flow N/A Bbl/d
Final open flow 198 MCF/d Final open flow N/A Bbl/d
Time of open flow between initial and final tests 24 Hours
Static rock pressure 650 psig (surface pressure after 72 Hours

Second producing formation Pay zone depth (ft)
Gas: Initial open flow MCF/d Oil: Initial open flow Bbl/d
Final open flow MCF/d Final open flow Bbl/d
Time of open flow between initial and final tests Hours
Static rock pressure psig (surface pressure after Hours

NOTE: ON BACK OF THIS FORM PUT THE FOLLOWING: 1) DETAILS OF PERFORATED INTERVALS, FRACTURING OR STIMULATING, PHYSICAL CHANGE, ETC. 2) THE WELL LOG WHICH IS A SYSTEMATIC DETAILED GEOLOGICAL RECORD OF ALL FORMATIONS, INCLUDING COAL ENCOUNTERED BY THE WELLBORE.

For: CABOT OIL & GAS CORPORATION

By: Ray Rudnick Jr.
Date: 10-8-99

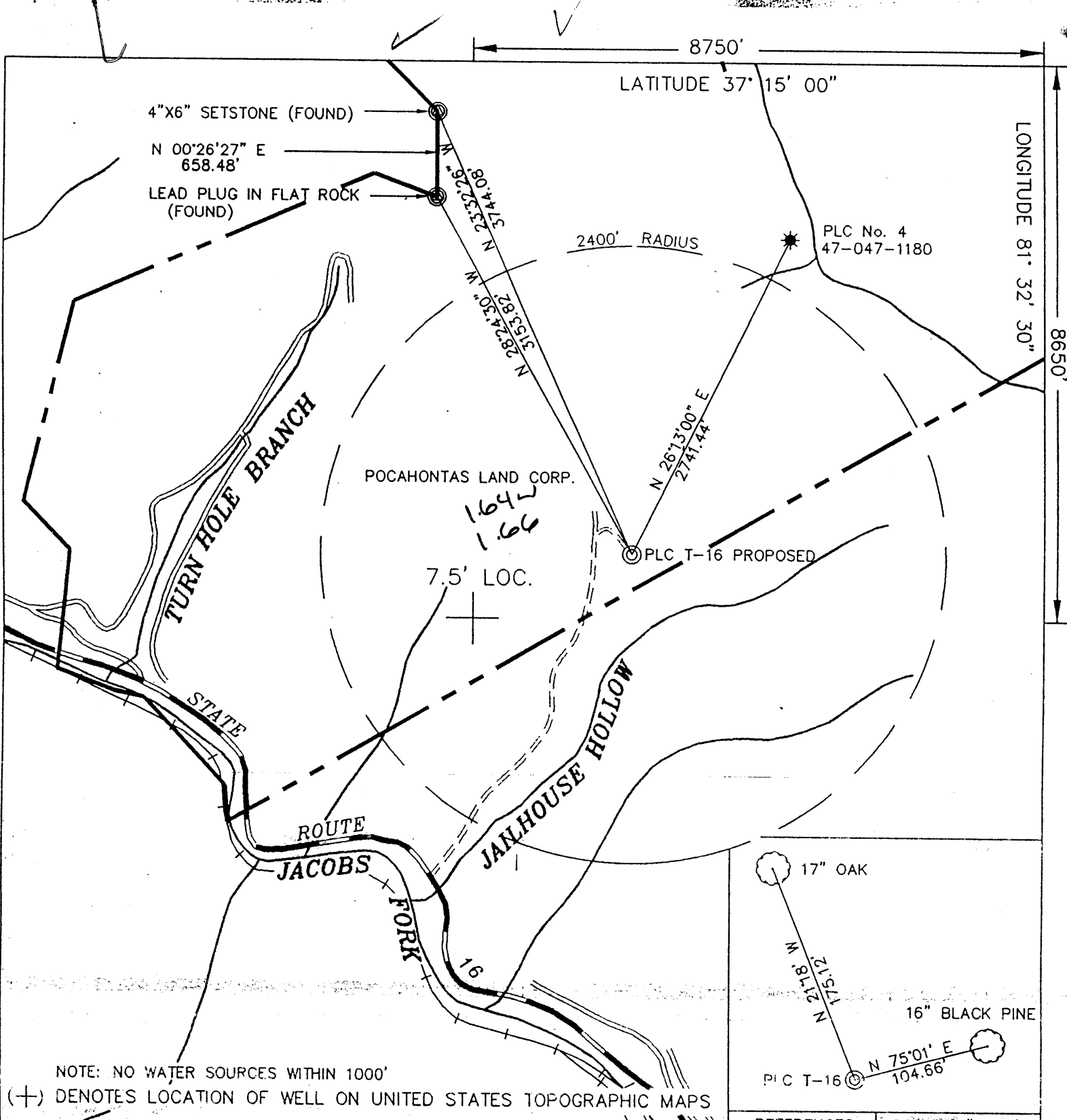
OCT 25 1999

MCDOW
1402

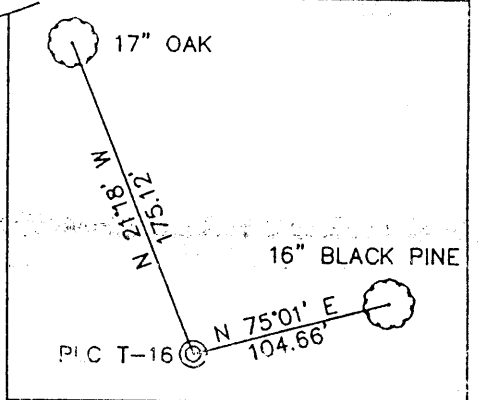
OPEN FLOW DATA

Perf'd Big Lime from 3084'-3102'. Broke down with 8000 gals of 15% HCl acid. BDP: 1932 psi. ISIP: 1290 psi. ATR: 5 bpm. ATP: 1550 psi. Displaced acid with 74 bbl of H₂O. ISIP: 1515 psi.

FORMATION	TOP	BOTTOM	REMARKS
Silt/Shale	0	716	
RV	716	875	
Silt/Shale	875	1095	
Avis	1095	1140	
Silt/Shale	1140	2335	
Shale	2335	2445	
Little Lime	2445	2570	
Shale	2570	2650	
Big Lime	2650	3198 - TD	

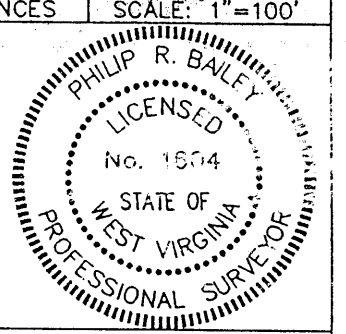


NOTE: NO WATER SOURCES WITHIN 1000'
 (+) DENOTES LOCATION OF WELL ON UNITED STATES TOPOGRAPHIC MAPS



FILE NO. XL319
 DRAWING NO. T16PLAT.DWG
 SCALE: 1" = 1000'
 MINIMUM DEGREE OF ACCURACY 1 : 2500
 PROVEN SOURCE OF ELEVATION USGS BM S. OF JAILHOUSE HOL. ELEV: 1773'

I THE UNDERSIGNED, HEREBY CERTIFY THAT THIS PLAT IS CORRECT TO THE BEST OF THE INFORMATION REQUIRED BY LAW AND THE REGULATIONS ISSUED AND PRESCRIBED BY THE DEPARTMENT OF MINES.
 (SIGNED) Philip Bailey
 R.P.E. _____ R.P.S. X



REFERENCES | SCALE: 1"=100'

STATE OF WEST VIRGINIA
 DEPARTMENT OF ENVIRONMENTAL PROTECTION
 OFFICE OF OIL AND GAS

DATE FEBRUARY 5 19 99
 OPERATOR'S WELL NO. POCA LAND T-16

API WELL No. 47 - 047 - 01403
 STATE COUNTY PERMIT

WELL TYPE: OIL GAS X LIQUID INJECTION WASTE DISPOSAL
 (IF "GAS") PRODUCTION X STORAGE DEEP SHALLOW X

LOCATION: ELEVATION 2242.19' WATER SHED JAILHOUSE HOL. OF JACOBS FORK
 DISTRICT BIG CREEK COUNTY McDOWELL
 QUADRANGLE TAZEWELL NORTH, VA-WVA.

SURFACE OWNER POCAHONTAS LAND CO. ACREAGE 899.66 OF 19,500
 OIL & GAS ROYALTY OWNER POCAHONTAS LAND CO. LEASE ACREAGE 19,500
 LEASE NO. _____

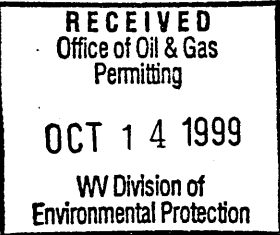
PROPOSED WORK: DRILL X CONVERT DRILL DEEPER REDRILL FRACTURE OR STIMULATE
 PLUG OFF OLD FORMATION PERFORATE NEW FORMATION OTHER PHYSICAL CHANGE IN WELL (SPECIFY) 6-60

PLUG AND ABANDON CLEAN OUT AND REPLUG

TARGET FORMATION BEREA ESTIMATED DEPTH 6500' **JUL 19 1999!**
 WELL OPERATOR CABOT OIL & GAS DESIGNATED AGENT JOHN ABSHIRE
 ADDRESS RT 60E & 3RD ST P.O. BOX 454 ADDRESS P.O. BOX 454 GLASGOW, WV 25086

Mc Dow 1403

WR-35



Date: 30-Sept-99
API #: 47-047-01403

State of West Virginia
Division of Environmental Protection
Section of Oil and Gas
Well Operator's Report of Well Work

Reviewed _____

Farm name: Pocahontas Land Corp. Operator Well No.: Pocahontas Land T-16

LOCATION: Elevation: 2,242' Quadrangle: Tazewell North
District: Big Creek County: McDowell
Latitude: 8,650 feet South of 37 DEG. 15 MIN. 0 SEC.
Longitude: 8,750 feet West of 81 DEG. 32 MIN. 30 SEC.

Company: Cabot Oil & Gas Corporation
400 Fairway Drive: Suite 400
Coraopolis, PA 15108-4308

Casing & Tubing Size	Used in Drilling	Left in Well	Cement Fill up Cu. Ft.
12-3/4"	20'	20'	
9-5/8"	356.8'	356.8'	110 sks Class "A"
7"	1116'	1116'	225 sks Class "A"
4-1/2"	4022.4'	4022.4'	80 sks RFC

Agent: John Abshire
Inspector: Ofie Helmick
Permit Issued: 7/14/99
Well Work Commenced: 9/9/99
Well Work Completed: 9/24/99
Verbal Plugging
Permission granted on:
Rotary Cable
Total Depth (feet): 4016'
Fresh Water Depths (ft)
Salt Water Depths (ft)
Is coal being mined in area (Y/N)?
Coal Depths (ft): 313'-315' (open)

OPEN FLOW DATA

Producing formation: Big Lime Pay zone depth (ft): 3886' - 3896'
Gas: Initial open flow: TSTM MCF/d Oil: Initial open flow: N/A Bbl/d
Final open flow: 163 MCF/d Final open flow: N/A Bbl/d
Time of open flow between initial and final tests: 24 Hours
Static rock pressure: 650 Psig (surface pressure after 73 Hours)

Second producing formation: Pay zone depth (ft):
Gas: Initial open flow: MCF/d Oil: Initial open flow: Bbl/d
Final open flow: MCF/d Final open flow: Bbl/d
Time of open flow between initial and final tests: Hours
Static rock pressure: psig (surface pressure after: Hours)

NOTE: ON BACK OF THIS FORM PUT THE FOLLOWING: 1). DETAILS OF PERFORATED INTERVALS, FRACTURING OR STIMULATING, PHYSICAL CHANGE, ETC. 2). THE WELL LOG WHICH IS A SYSTEMATIC DETAILED GEOLOGICAL RECORD OF ALL FORMATIONS, INCLUDING COAL ENCOUNTERED BY THE WELLBORE.

For: CABOT OIL & GAS CORPORATION
By: Ray Rudnick, Jr.
Date: 10-8-99

OCT 25 1999

M-Dow 1403

OPEN FLOW DATA

Perf'd Big Lime from 3886'-3896'. Broke down with 250 gals HCl acid @ 1218 psi. ISIP: 1547 psi. Calc BHTP: 3230 psi. Displaced with 20 bbls H₂O @ 10 bpm. Acidized with 190 bbls 15% gelled acid @ 5 bpm. Flushed with 93 bbls of H₂O @ 5 bpm. ATP: 1173 psi. ISIP: 808 psi.

FORMATION	TOP	BOTTOM	REMARKS
Silt/Shale	0	824	
Shale	824	1488	
RV	1488	1740	
Shale	1740	1870	
Avis	1870	1920	
Shale	1920	2342	
Maxton	2342	2366	
Silt/Shale	2366	2890	
Maxton	2890	2912	
Silt/Shale	2912	3090	
Maxton	3090	3100	
Shale	3100	3222	
Big Lime	3222	3345	
Shale	3345	3470	
Big Lime	3470	4016 - TD	