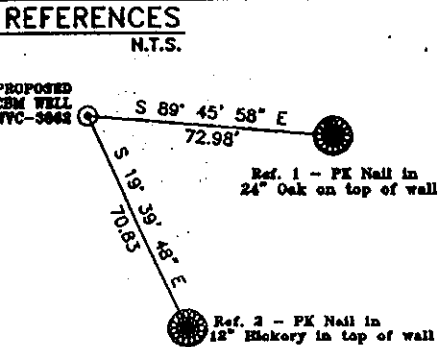
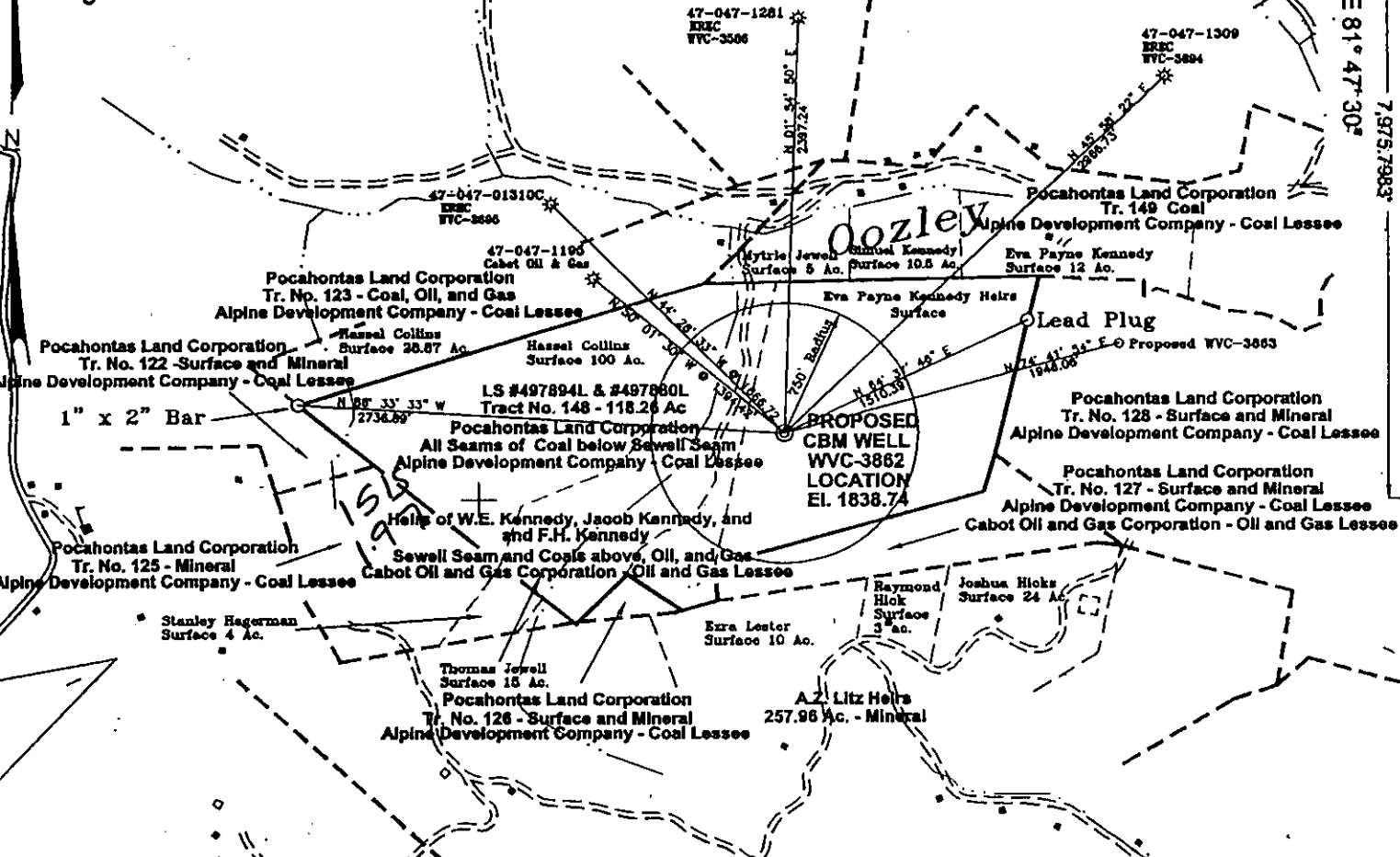


STATE PLANE COORDINATES  
 (NAD 27 Datum)  
 N 129,555.7027  
 E 1,759,511.1305  
 Latitude 37.35284659  
 Longitude 81.82730482

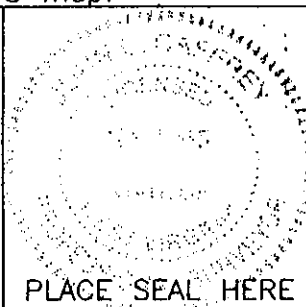
10,428.2819'  
 LATITUDE 37° 22' 30"  
 LONGITUDE 81° 47' 30"  
 7,975.7983'



Eva Payne Kennedy Heirs - Surface  
 W.E. Kennedy, Jacob Kennedy, and F.H. Kennedy Heirs - Oil and Gas and Sewell Seam and Coals above.  
 Pocahontas Land Corporation - All Seams of Coals below Sewell Seam.  
 Lease # 497894L and 497880L - Tract #148 (Heirs of W.E. Kennedy, Jacob Kennedy, and F.H. Kennedy) ±144 Ac.  
 Cabot Oil and Gas Corporation - Oil and Gas Lessee  
 Alpine Development Company - Coal Lessee  
 Note: (+) Denotes location of well on USGS map.

FILE No. Equitable99  
 DRAWING NAME \PLAT\WVC-3862  
 Drawing Number 2-2-99-1SP  
 SCALE 1" = 1000'  
 MINIMUM DEGREE OF ACCURACY 1 : 2500  
 PROVEN SOURCE OF ELEVATION USGS B.M.  
Estep

I THE UNDERSIGNED, HEREBY CERTIFY THAT THIS PLAT IS CORRECT TO THE BEST OF MY KNOWLEDGE AND BELIEF AND SHOWS ALL THE INFORMATION REQUIRED BY LAW AND THE REGULATIONS ISSUED AND PRESCRIBED BY THE DEPARTMENT OF MINES.  
 (SIGNED) [Signature]  
 R.P.E. R.P.S. 1065



STATE OF WEST VIRGINIA  
 DIVISION OF ENVIRONMENTAL PROTECTION  
 OFFICE OF OIL AND GAS  
 NITRO, WV

DATE FEBRUARY 16 19 99  
 OPERATOR'S WELL No. WVC-3862  
 API WELL No. 47 - 047 - 01406C  
 STATE COUNTY PERMIT

WELL TYPE: OIL GAS CBM LIQUID INJECTION WASTE DISPOSAL  
 (IF "GAS") PRODUCTION  STORAGE  DEEP  SHALLOW

LOCATION: ELEVATION 1838.74 WATER SHED OZLEY BRANCH OF DRY FORK  
 DISTRICT SANDY RIVER COUNTY McDOWELL  
 QUADRANGLE BRADSHAW, WV - VA

SURFACE OWNER EVA PAYNE KENNEDY HEIRS ACREAGE 20  
 CBM ROYALTY OWNER W.E. KENNEDY, JACOB KENNEDY, AND F.H. KENNEDY HEIRS AND POCAHONTAS LAND CORPORATION - TRACT No.148 LEASE ACREAGE ±144  
 LEASE No. 497894L and 497880L

PROPOSED WORK: DRILL  CONVERT  DRILL DEEPER  REDRILL  FRACTURE OR STIMULATE  PLUG OFF OLD FORMATION  PERFORATE NEW FORMATION  OTHER PHYSICAL CHANGE IN WELL (SPECIFY) \_\_\_\_\_

PLUG AND ABANDON  CLEAN OUT AND REPLUG

TARGET FORMATION PENNSYLVANIAN COALS ESTIMATED DEPTH \_\_\_\_\_  
 WELL OPERATOR EQUITABLE PRODUCTION COMPANY DESIGNATED AGENT LARRY AYLESTOCK  
 ADDRESS 1989 EAST STONE DRIVE ADDRESS P.O. BOX 1550  
KINGSPORT, TN 37660 CLARKSBURG, WV 26302

McDOWELL 1406C

10-6 283

WR-35

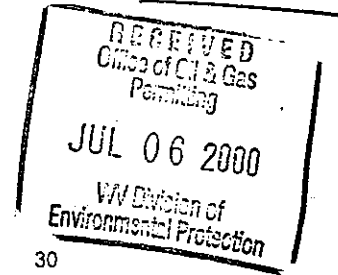
23-Sep-99  
API # 47- 047-01406 C

Reviewed \_\_\_\_\_

State of West Virginia  
Division of Environmental Protection  
Section of Oil and Gas

Well Operator's Report of Well Work

Farm Name: BLANKENSHIP, SALLY Operator Well No.: WVC-3862  
LOCATION: Elevation: 1,838.74 Quadrangle: BRADSHAW  
District: SANDY RIVER County: McDOWELL  
Latitude: 7975 Feet South of Deg. 37 Minutes 22 Seconds 30  
Longitude: 10428 Feet West of Deg. 81 Minutes 47 Seconds 30



Company: Equitable Production Company  
P.O. Box 2347, 1710 Pennsylvania Avenue  
Charleston, WV 25328

Agent: Richard D. Smeltzer

Inspector: OFIE HELMICK  
Permit Issued: 09/23/1999  
Well work commenced: 10/26/99  
Well work completed: 01/01/00

Verbal Plugging  
Rotary Rig  Cable Rig \_\_\_\_\_  
Total Depth 1765 feet  
Fresh water depths (ft) 150

Salt water depths (ft) \_\_\_\_\_

Is coal being mined in area?  
Coal Depths (ft): Depths ranged from 100'-1512'

Casing & Tubing Size	Used in Drilling	Left in Well	Cement Fill Up Cu. Ft.
12-3/4"	20'	20'	GRTD
8-5/8"	315'	315'	118 FT <sup>3</sup>
4-1/2"	1735'	1735'	290 FT <sup>3</sup>
2-3/8"		1625'	

OPEN FLOW DATA

Producing formation	Pennsylvanian Coals		Pay Zone Depth (ft):	See Attach for details
Gas: Initial open flow			Bbl/d	
Final open flow	14	Final open flow:		
Time of open flow between initial and final tests			Hours	
Static rock pressure	64	psig (surface pressure) after	48	Hours
Second producing formation			Pay Zone Depth (ft):	
Gas: Initial open flow	MCF/d	Oil: Initial open flow	Bbl/d	
Final open flow:	MCF/d	Final open flow:		
Time of open flow between initial and final tests			Hours	
Static rock pressure		psig (surface pressure) after		Hours

NOTE: ON BACK OF THIS FORM PUT THE FOLLOWING: 1) DETAILS OF PERFORATED INTERVALS, FRACTURING OR STIMULATING, PHYSICAL CHANGE, ETC. 2) THE WELL LOG WHICH IS A SYSTEMATIC DETAILED GEOLOGICAL RECORD OF ALL FORMATIONS, INCLUDING COAL ENCOUNTERED BY THE WELLBORE.

For: BLAZER ENERGY CORPORATION

By: Barbara Hubbard  
Date: 7-5-00

Mc Dow 1406 C

AUG 04 2000

Equitable Production Company  
 WR-35 COMPLETION REPORT - Attachment  
 Well Treatment Summary

Well: WVC-3862

API# 47-047-01406 C

Date	11/12/99	11/12/99			
Type Frac					
Acid, N <sub>2</sub> , Foam, Water	X-Link Gel	X-Link Gel			
Zone Treated	1 <sup>st</sup> Stage	2 <sup>nd</sup> Stage			
# Perfs	17	9			
From - To:	1209-1512	829-978			
BD Pressure @ psi	1790	1600			
ATP psi	3142	3318			
Avg. Rate, B=B/M, S= SCF/M	16 B	15 B			
Max. Treat Press psi	3640	3708			
ISIP psi	1500	1470			
Frac Gradient	1.46				
10 min S-I Pressure	1326 (5 MIN)	862 (5 min)			
Material Volume					
Sand-sks	140	151			
Water-bbl	647	518			
SCF N <sub>2</sub>					
Acid-gal	710	380			
NOTES:					

RECEIVED  
 Onsite Oil & Gas  
 Permitting  
 JUL 06 2000  
 W.V. Division of  
 Environmental Protection

TOP	BASE	FORMATION	REMARKS*
0	10	Fill	
10	45	Sand/Shale	
45	100	Sand/Shale	
100	102	Coal	
102	150	Sand Shale	½" stream water @ 150'
150	180	Sand Shale	
180	250	Sand Shale	
250	290	Sand Shale	
290	331	Sand Shale	
331	472	Sand Shale	
472		Sewell A	
640		Welch	
830		Beckley	
977		Fire Creek	
1028		L. Fire Creek	
1209		Poca 6	
1279		Poca 4	
1364		Poca 3	
1420		Poca 2	
1451		Poca 1	
1510		Squire Jim	
1765		TD	GT @ TD=odor