

**STATE PLANE COORDINATES**

(NAD 27 Datum)

N 133,967.1665

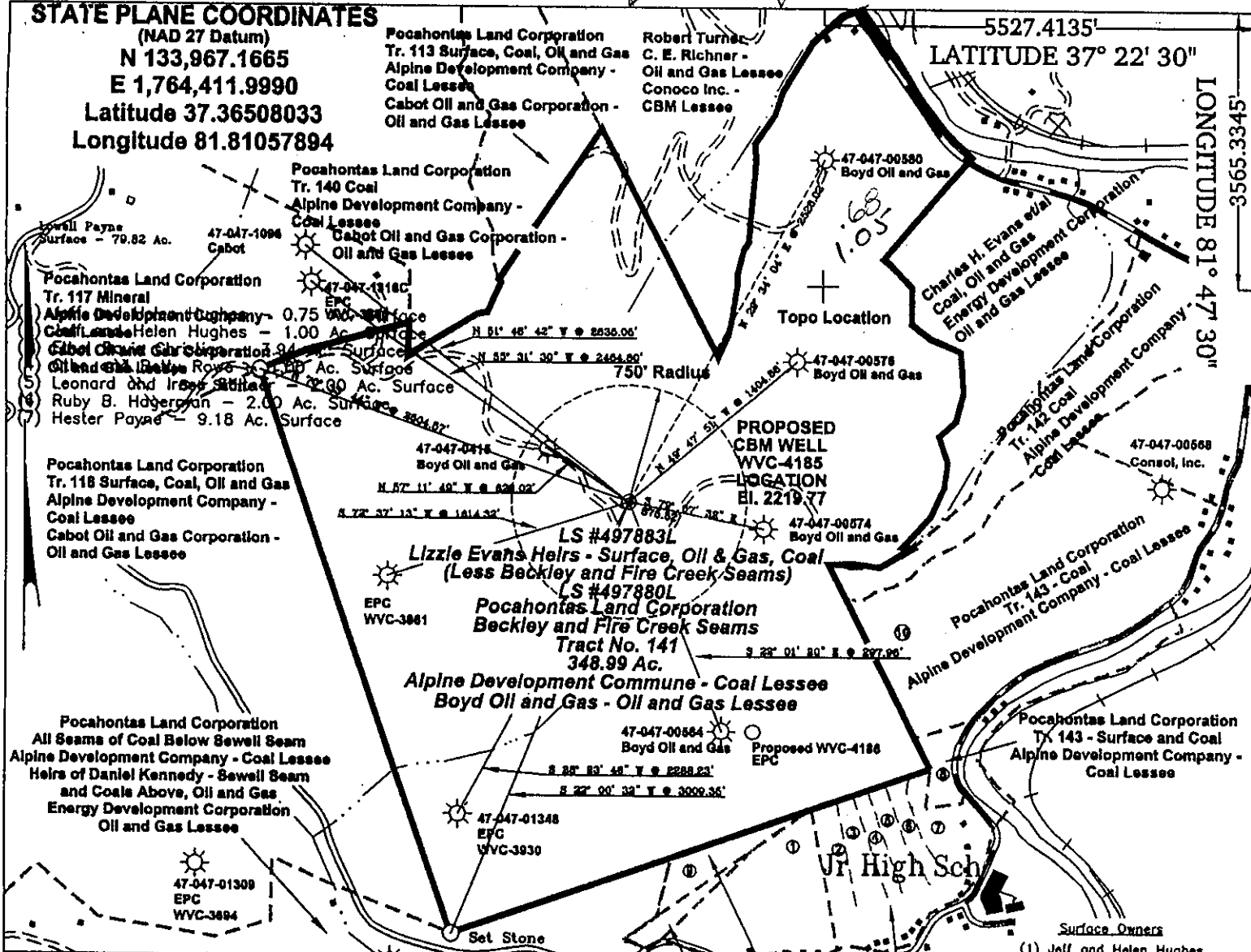
E 1,764,411.9990

Latitude 37.36508033

Longitude 81.81057894

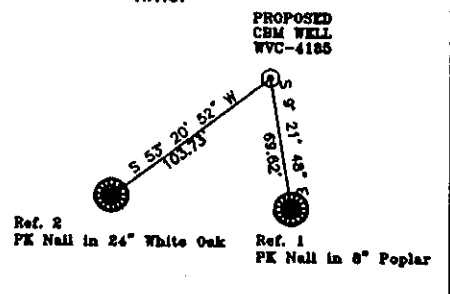
5527.4135'  
LATITUDE 37° 22' 30"

LONGITUDE 81° 47' 30"



**REFERENCES**

N.T.S.



**Surface Owners**

- (1) Jeff and Helen Hughes
- (2) Jeff and Helen Hughes
- (3) Ethel Davis Christian
- (4) Otho and Betty Rowe
- (5) Leonard and Irene Stillner
- (6) Ruby B. Hogerman
- (7) Hester Payne
- (8) Pocahontas Land Corporation
- (9) Janet Lockhart
- (10) Lowell Payne

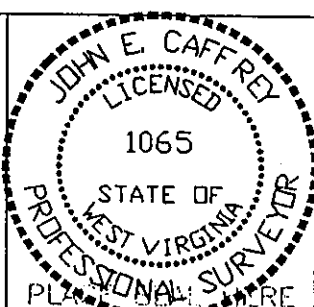
Lizzie Evans Heirs - Surface, Oil & Gas, Coal (Less Beckley and Fire Creek Seams)  
Lease # 497883L - 352 Ac.  
Pocahontas Land Corporation - Beckley & Fire Creek Seams of Coal  
Lease # 497880L - Tract #141 (Lizzie Evans) 348.99 Ac.  
Boyd Oil and Gas Inc. - Oil and Gas Lessee  
Alpine Development Company - Coal Lessee

Note: (+) Denotes location of well on USGS map.

FILE No. Equitable-99  
DRAWING NAME WVC-4185\PLT-4185  
Drawing Number 8-5-99-1SP  
SCALE 1" = 1000'  
MINIMUM DEGREE OF ACCURACY 1:2500  
PROVEN SOURCE OF ELEVATION USGS B.M.  
Estep

I THE UNDERSIGNED, HEREBY CERTIFY THAT THIS PLAT IS CORRECT TO THE BEST OF MY KNOWLEDGE AND BELIEF AND SHOWS ALL THE INFORMATION REQUIRED BY LAW AND THE REGULATIONS ISSUED AND PRESCRIBED BY THE DEPARTMENT OF MINES.

(SIGNED) [Signature]  
R.P. No. 1065



**STATE OF WEST VIRGINIA**  
**DIVISION OF ENVIRONMENTAL PROTECTION**  
**OFFICE OF OIL AND GAS**  
**NITRO, WV**

DATE AUGUST 6 19 99  
OPERATOR'S WELL No. WVC-4185  
API WELL No. 47 - 047 - 014070

WELL TYPE: OIL GAS CBM LIQUID INJECTION WASTE DISPOSAL STATE COUNTY PERMIT  
(IF "GAS") PRODUCTION X STORAGE DEEP SHALLOW

LOCATION: ELEVATION 2219.77 WATER SHED UNNAMED TRIBUTARY OF DRY FORK  
DISTRICT SANDY RIVER COUNTY McDOWELL  
QUADRANGLE BRADSHAW, WV-VA

SURFACE OWNER LIZZIE EVANS HEIRS ACREAGE 270.24  
CBM ROYALTY OWNER POCAHONTAS LAND CORPORATION AND LIZZIE EVANS HEIRS LEASE ACREAGE 348.99  
LEASE No. 497880L and 497883L

PROPOSED WORK: DRILL X CONVERT DRILL DEEPER REDRILL FRACTURE OR  
STIMULATE X PLUG OFF OLD FORMATION PERFORATE NEW  
FORMATION OTHER PHYSICAL CHANGE IN WELL (SPECIFY)

PLUG AND ABANDON CLEAN OUT AND REPLUG  
TARGET FORMATION PENNSYLVANIAN COALS ESTIMATED DEPTH  
WELL OPERATOR EQUITABLE PRODUCTION COMPANY DESIGNATED AGENT LARRY AYLESTOCK  
ADDRESS 1989 EAST STONE DRIVE ADDRESS P.O. BOX 1550  
KINGSPORT, TN 37660 CLARKSBURG, WV 26302

1999

6-6 383

State of West Virginia  
Division of Environmental Protection  
Section of Oil and Gas

*bcj*

Well Operator's Report of Well Work

Farm Name: Lizzie Evans-Heirs Operator Well No.: WVC-4185

LOCATION: Elevation: 2,219.77 Quadrangle: Bradshaw  
District: Sandy River County: McDowell

Latitude: 3565.3345 Feet South of Deg. 37 Minutes 22 Seconds 30  
Longitude: 5527.4135 Feet West of Deg. 81 Minutes 47 Seconds 30

Company: EQUITABLE PRODUCTION COMPANY  
P.O. Box 2347, 1710 Pennsylvania Avenue  
Charleston, WV 25328

Agent: Stephen Perdue

Inspector: Ofie Helmick

Permit Issued: 10/07/1999

Well work commenced: 09/18/01

Well work completed: 02/11/02

Verbal Plugging

Permission granted on:

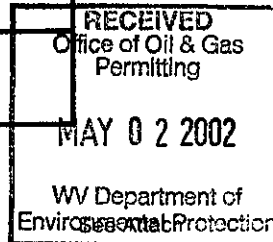
Rotary Rig X Cable Rig

Total Depth 2130 feet

Fresh water depths (ft)

Salt water depths (ft)

Casing & Tubing Size	Used in Drilling	Left in Well	Cement Fill Up Cu. Ft.
12-3/4"	18'	18'	Grtd
9-5/8"	314'	314'	125 FT <sup>3</sup>
4-1/2"	2107'	2107'	368 FT <sup>3</sup>
2-3/8"		2012'	



Is coal being mined in area?

Coal Depths (ft): 120', 130', 226', 275', 560', 1030', 1251', 1370', 1630', 1750', 1812', 1875'

OPEN FLOW DATA

Poco 4,3,2,1, Squire Jim/Welch, L Raleigh, Beckley, Firecreek,

Producing formation L Firecreek, Poco 9.8

Pay Zone Depth (ft): for details

Gas: Initial open flow NS Bbl/d

Final open flow 21 Final open flow:

Time of open flow between initial and final tests  Hours

Static rock pressure 35 psig (surface pressure) after  Hours

Second producing formation  Pay Zone Depth (ft):

Gas: Initial open flow  MCF/d Oil: Initial open flow  Bbl/d

Final open flow:  MCF/d Final open flow:

Time of open flow between initial and final tests  Hours

Static rock pressure  psig (surface pressure) after  Hours

NOTE: ON BACK OF THIS FORM PUT THE FOLLOWING: 1) DETAILS OF PERFORATED INTERVALS, FRACTURING OR STIMULATING, PHYSICAL CHANGE, ETC. 2) THE WELL LOG WHICH IS A SYSTEMATIC DETAILED GEOLOGICAL RECORD OF ALL FORMATIONS, INCLUDING COAL ENCOUNTERED BY THE WELLBORE.

For: EQUITABLE PRODUCTION

By: *Stephen Perdue*  
Date: 4/30/02

MAY 3 - 2002

MCDOWELL 1407C

**EQUITABLE PRODUCTION COMPANY**  
**WR-35 COMPLETION REPORT - Attachment**  
**Well Treatment Summary**

Well: WV-504185

API# 47-047-01407C

Date	10/2/2001	10/2/2001
Type Frac	65/70 Q Foam	65/70 Q Foam
Acid, N <sub>2</sub> , Foam, Water		
Zone Treated	Poco 4,3,2,1, Squire Jim	Welch, L Raleigh, Beckley, Firecreek, L Firecreek, Poco 9,8
# Perfs From - To:	12 1663-1900	14 1026-1458.5
BD Pressure @ psi	2520	2130
ATP psi	3686	3600
Avg. Rate, B=B/M, S= SCF/M	11.9 B Foam	30-40 B
Max. Treat Press psi	3980	3980
ISIP psi	1982	900
Frac Gradient	1.55	1.15
10 min S-I Pressure	1730 (5 min)	780
Material Volume		
Sand-sks	110	98
Water-bbl	419	372
SCF N <sub>2</sub>	682,713	472,355
Acid-gal	804 gal 7.7%	300-400 gal 15.3 & 7.7%
NOTES:		

**TOP                      BASE                      FORMATION                      REMARKS\***  
Coal Depths – 120', 130', 226', 275', 560', 1030', 1251', 1370', 1630', 1750', 1812', 1875'  
GT @ 1765', 1775', 1885', 2068'=21 mcf/d,

	TOP	BASE	NET COAL
SEWELL B	942	948	
WELCH	1025.25	1026.75	14
LITTLE RALEIGH	1086.75	1087.75	4
BECKLEY	1214.25	1221.25	48
FIRE CREEK	1350.25	1353.5	36
L. FIRE CREEK	1366.25	1366.75	6
POCA 9	1411.5	1412.5	0
POCA 8	1457	1459	0
POCA 7	NP	NP	
<b>BARBLE</b>			
POCA 6	NP	NP	
POCA 5	NP	NP	
POCA 4	1662.25	1665.25	36
POCA 3	1741.25	1754.5	6
POCA 2	1801	1804.75	12
POCA 1	1840.75	1841.5	6
SQUIRE JIM	1894.75	1901.25	16
MAUCH CHUNK			
		TOTAL COAL	166
TD:	2130		

