

WW-7
8-30-06



West Virginia Department of Environmental Protection
Office of Oil and Gas
WELL LOCATION FORM: GPS

API: 47-047-01440 WELL NO.: WV 216541 (WVC 3816)

FARM NAME: Georgia-Pacific Corporation

RESPONSIBLE PARTY NAME: EQT Production Company

COUNTY: McDowell DISTRICT: Sandy River

QUADRANGLE: Bradshaw 7.5'

SURFACE OWNER: Willie & Barbara Hagerman

ROYALTY OWNER: EQT Production Company, et al.

UTM GPS NORTHING: 4133167

UTM GPS EASTING: 426329 GPS ELEVATION: 541 m (1777 ft)

The Responsible Party named above has chosen to submit GPS coordinates in lieu of preparing a new well location plat for a plugging permit or assigned API number on the above well. The Office of Oil and Gas will not accept GPS coordinates that do not meet the following requirements:

1. Datum: NAD 1983, Zone: 17 North, Coordinate Units: meters, Altitude: height above mean sea level (MSL) – meters.
2. Accuracy to Datum – 3.05 meters
3. Data Collection Method:

Survey grade GPS : Post Processed Differential
Real-Time Differential

Mapping Grade GPS X: Post Processed Differential X
Real-Time Differential

4. **Letter size copy of the topography map showing the well location.**

I the undersigned, hereby certify this data is correct to the best of my knowledge and belief and shows all the information required by law and the regulations issued and prescribed by the Office of Oil and Gas.

Signature Steve O'Keefe

Date 12/6/13

Title PS # 2180

JAN 17 2014

Office of Oil and Gas
WV Dept. of Environmental Protection

4701440P

Topo Quad: Bradshaw 7.5'

Scale: 1" = 2000'

County: McDowell

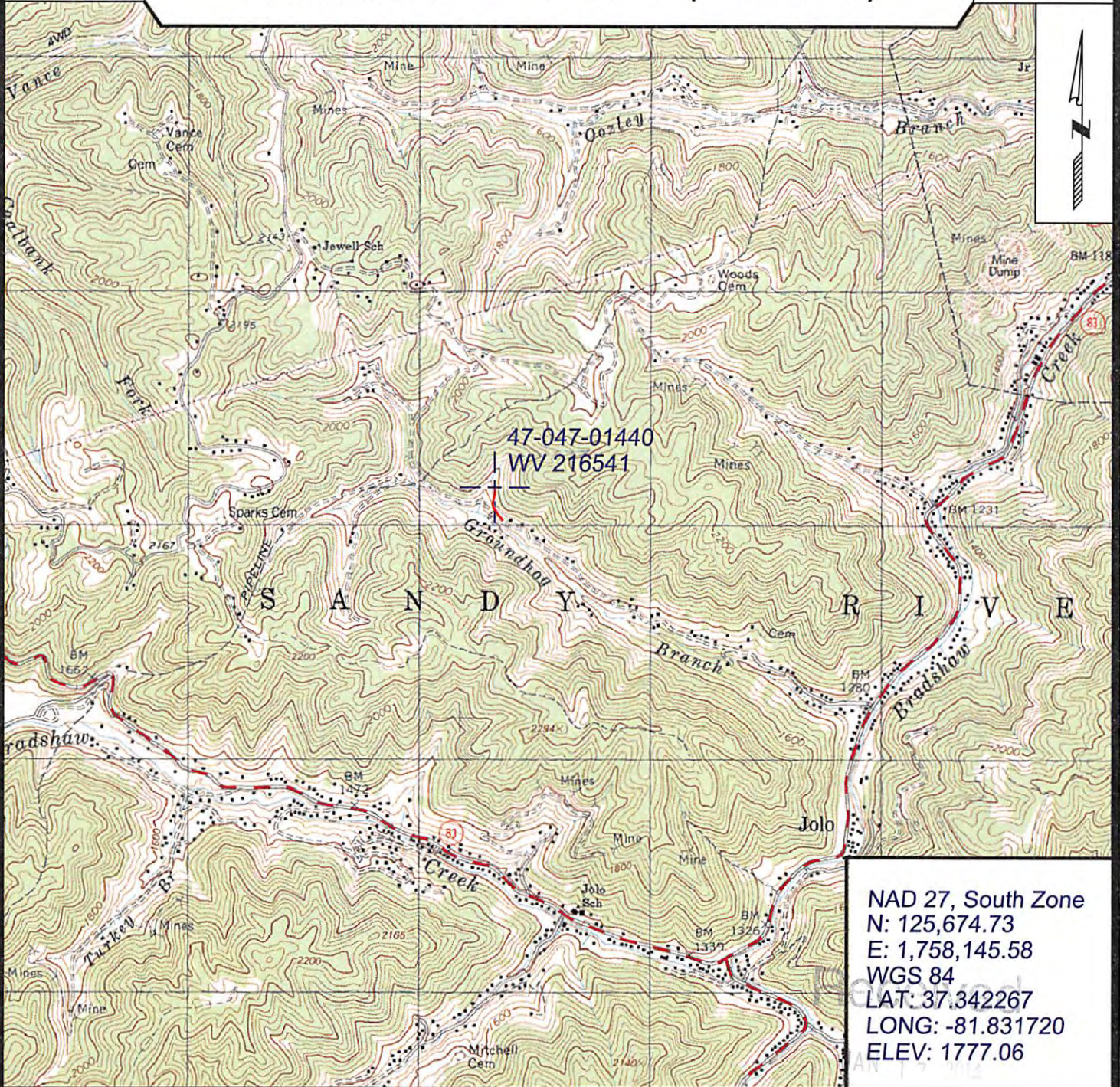
Date: November 27, 2013

District: Sandy River

Project No: 20-37-00-08

47-047-01440 WV 216541 (WVC 3816)

Topo



NAD 27, South Zone
 N: 125,674.73
 E: 1,758,145.58
 WGS 84
 LAT: 37.342267
 LONG: -81.831720
 ELEV: 1777.06



SURVEYING AND MAPPING SERVICES PERFORMED BY:
ALLEGHENY SURVEYS, INC.

1-800-482-8606
 P.O. BOX 438
 BIRCH RIVER, WV 26610
 PH: (304) 649-8606
 FAX: (304) 649-8608

PREPARED FOR:

Office of Oil and Gas
EQT Production Company
 P.O. Box 280
 Bridgeport, WV 26330