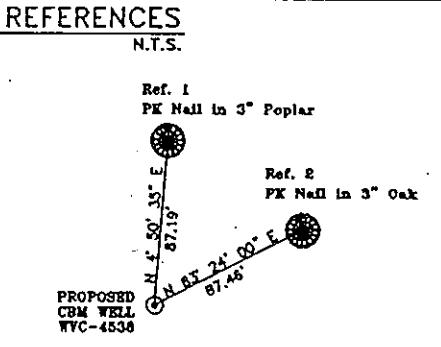
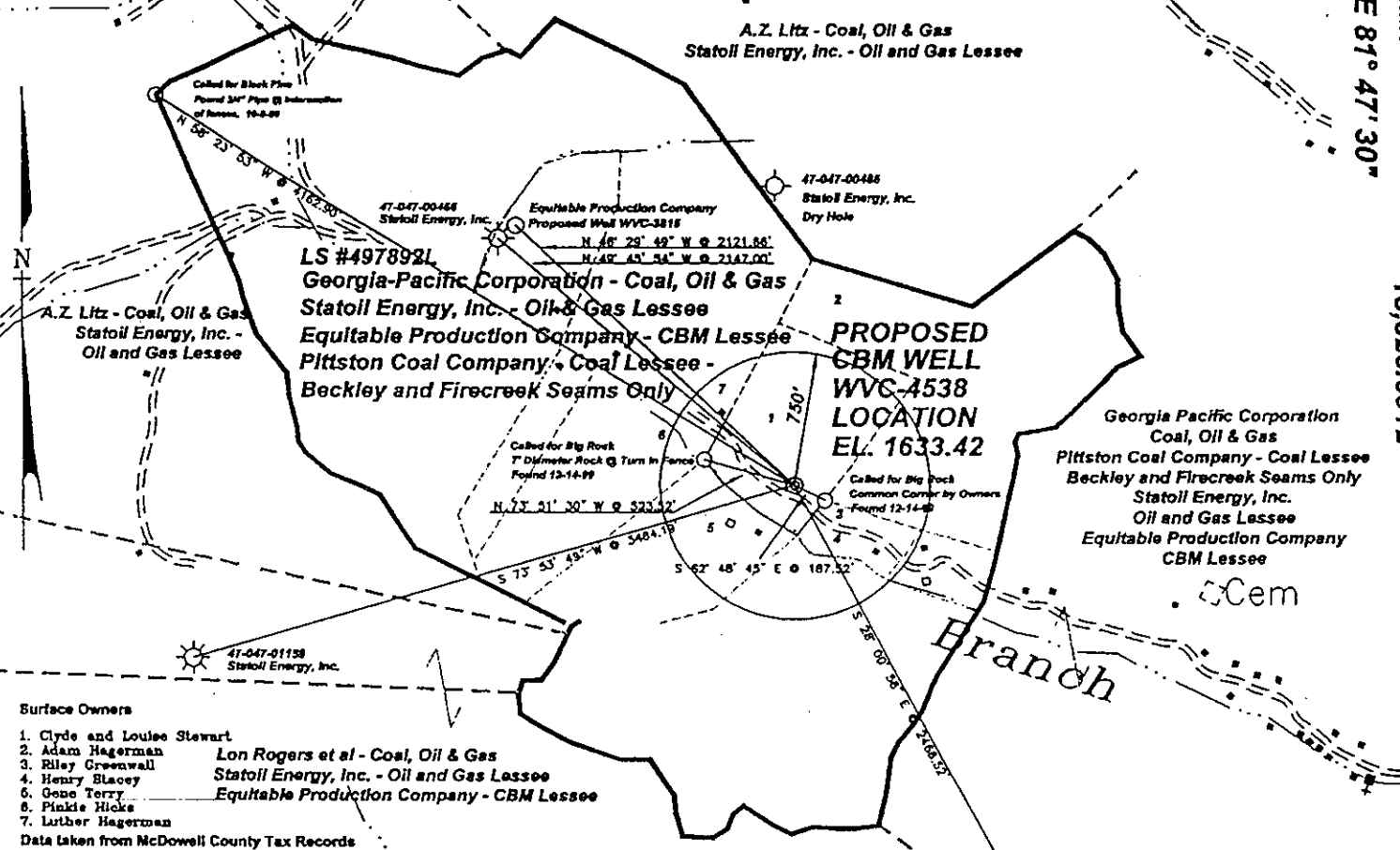


**STATE PLANE COORDINATES**  
 (NAD 27 Datum)  
 N 124,204.8098  
 E 1,759,679.4538  
 Latitude 37.33815603  
 Longitude 81.82656164

10,259.9587' LATITUDE 37° 22' 30"  
 LONGITUDE 81° 47' 30"

13,326.6912'



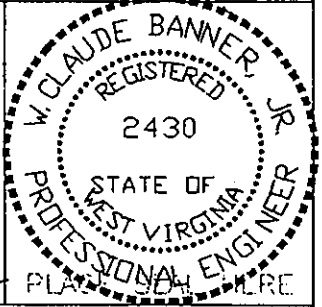
FILE No. Equitable-99  
 DRAWING NAME WVC-4538\WVC-4538  
 Drawing Number 12-15-99-1SP  
 SCALE 1" = 1000'  
 MINIMUM DEGREE OF ACCURACY 1 : 2500  
 PROVEN SOURCE OF ELEVATION Global Positioning System (GPS)

Topo Location  
 Georgia-Pacific Corporation - Coal, Oil and Gas Lease # 497892L - 810.95 Ac.  
 StatOil, Energy, Inc. - Oil and Gas Lessee  
 Pittston Coal Company - Coal Lessee - Beckley and Firecreek Seams Only  
 Equitable Production Company - CBM Lessee  
 Clyde and Louise Stewart - Surface ±20 Ac.

Note: (+) Denotes location of well on USGS map.

I THE UNDERSIGNED, HEREBY CERTIFY THAT THIS PLAT IS CORRECT TO THE BEST OF MY KNOWLEDGE AND BELIEF AND SHOWS ALL THE INFORMATION REQUIRED BY LAW AND THE REGULATIONS ISSUED AND PRESCRIBED BY THE DEPARTMENT OF MINES.

(SIGNED) *W. Claude Banner*  
 R.P.E. 2430 R.P.S. \_\_\_\_\_



**STATE OF WEST VIRGINIA**  
**DIVISION OF ENVIRONMENTAL PROTECTION**  
**OFFICE OF OIL AND GAS**  
**NITRO, WV**

DATE JANUARY 14 20 00  
 OPERATOR'S WELL No. WVC-4538  
 API WELL No. 47 - 047 - 01441C

WELL TYPE: OIL GAS CBM LIQUID INJECTION WASTE DISPOSAL STATE COUNTY PERMIT  
 (IF "GAS") PRODUCTION X STORAGE DEEP SHALLOW

LOCATION: ELEVATION 1633.42 WATER SHED GROUNDHOG BRANCH OF BRADSHAW CREEK  
 DISTRICT SANDY RIVER COUNTY McDOWELL  
 QUADRANGLE BRADSHAW, WV - VA

SURFACE OWNER CLYDE AND LOUISE STEWART ACREAGE ± 20.00  
 CBM ROYALTY OWNER GEORGIA-PACIFIC CORPORATION LEASE ACREAGE 810.95

LEASE No. 497892L

PROPOSED WORK: DRILL X CONVERT DRILL DEEPER REDRILL FRACTURE OR STIMULATE X PLUG OFF OLD FORMATION PERFORATE NEW FORMATION OTHER PHYSICAL CHANGE IN WELL (SPECIFY) 6-6 383

PLUG AND ABANDON CLEAN OUT AND REPLUG  
 TARGET FORMATION PENNSYLVANIAN COALS ESTIMATED DEPTH  
 WELL OPERATOR EQUITABLE PRODUCTION COMPANY DESIGNATED AGENT LARRY AYLESTOCK  
 ADDRESS 1989 EAST STONE DRIVE ADDRESS P.O. BOX 1550  
KINGSPORT, TN 37660 CLARKSBURG, WV 26302

Mc Dow 1441C

Reviewed 12/13

State of West Virginia  
Division of Environmental Protection  
Section of Oil and Gas

Well Operator's Report of Well Work

Farm Name: Stewart, Clyde & Louise Operator Well No.: WVC-4538

LOCATION: Elevation: 1,633.42 Quadrangle: Bradshaw  
District: Sandy River County: McDowell

Latitude: 13326.7 Feet South of Deg. 37 Minutes 22 Seconds 30  
Longitude: 10259.96 Feet West of Deg. 81 Minutes 47 Seconds 30

Company: EQUITABLE PRODUCTION COMPANY  
P.O. Box 2347, 1710 Pennsylvania Avenue  
Charleston, WV 25328

Agent: Steve Perdue

Inspector: Ofie Helmick

Permit Issued: 5/1/00

Well work commenced: 02/23/01

Well work completed: 03/26/01

Verbal Plugging

Permission granted on:

Rotary Rig X Cable Rig

Total Depth 1619' feet

Fresh water depths (ft) None Reported

Salt water depths (ft) None Reported

Is coal being mined in area?

Coal Depths (ft):

Casing & Tubing Size	Used in Drilling	Left in Well	Cement Fill Up Cu. Ft.
12-3/4"	20'	20'	GRTD
9-5/8"	315'	315'	130 FT <sup>3</sup>
4-1/2"	1583'	1583'	297 FT <sup>3</sup>
1-1/2"		1498'	

RECEIVED  
Office of Oil & Gas  
Permitting  
APR 27 2001  
WV Division of  
Environmental Protection

OPEN FLOW DATA

Producing formation Lower/Upper Coal Seams

Pay Zone Depth (ft): See Attach for details

Gas: Initial open flow 18 Bbl/d  
Final open flow 37 Final open flow:  
Time of open flow between initial and final tests Hours  
Static rock pressure 220 psig (surface pressure) after Hours

Second producing formation

Pay Zone Depth (ft):

Gas: Initial open flow MCF/d Oil: Initial open flow Bbl/d  
Final open flow: MCF/d Final open flow:  
Time of open flow between initial and final tests Hours  
Static rock pressure psig (surface pressure) after Hours

NOTE: ON BACK OF THIS FORM PUT THE FOLLOWING: 1) DETAILS OF PERFORATED INTERVALS, FRACTURING OR STIMULATING, PHYSICAL CHANGE, ETC. 2) THE WELL LOG WHICH IS A SYSTEMATIC DETAILED GEOLOGICAL RECORD OF ALL FORMATIONS, INCLUDING COAL ENCOUNTERED BY THE WELLBORE.

For: BLAZER ENERGY CORPORATION

By: [Signature]  
Date: 4/19/01

MAY 4 2001

McDow 1441

**EQUITABLE PRODUCTION COMPANY  
WR-35 COMPLETION REPORT - Attachment  
Well Treatment Summary**

Well: WVC-4538

API# 47-047-01441

Date	3/14/01	3/21/01			
Type Frac Acid, N <sub>2</sub> , Foam, Water	70 Q Foam	70 Q Foam			
Zone Treated	L. Coal Seams	U Coal Seams			
# Perfs From - To:	Poca 4 15 Squire Jim 998-1357.5	Beckley 13 Poca 8 674.5-870.5			
BD Pressure @ psi	2298	2300			
ATP psi	2562	2550			
Avg. Rate, B=B/M, S= SCF/M	30 B	45 B			
Max. Treat Press psi	4145	3145			
ISIP psi	1188	1480			
Frac Gradient	1.80	2.34			
10 min S-I Pressure	976	1056			
Material Volume					
Sand-sks	122	125			
Water-bbl	150	436			
SCF N <sub>2</sub>	296,000	628,000			
Acid-gal	715 gal 7-½%				
NOTES:					

TOP	BASE	FORMATION	REMARKS*
0	3	Overburden	
3	12	Shale	
12	130	Sand Shale	
130	260	Sandstone	
260	395	Sand Shale	
395	398	Coal	
398	455	Sand Shale	
455	458	Coal	
458	540	Sand Shale	
540	541	Coal	
541	673.5	Sand Shale	
673.5	678	Beckley	
778.5	780.5	Fire Creek	
826.75	828.75	Poca 9	
869.75	871	Poca 8	
937	937.5	Poca 7	
998	998.75	Poca 6	
1035.5	1036.75	Poca 5	
1119.5	1121.5	Poca 4	
1199	1200.5	Poca 3	
1255.5	1260	Poca 2	
1356.75	1358.25	Squire Jim	
1510		Mauch Chunk	
1619		TD	

GT @ 1619' = 18 mcf/d.

