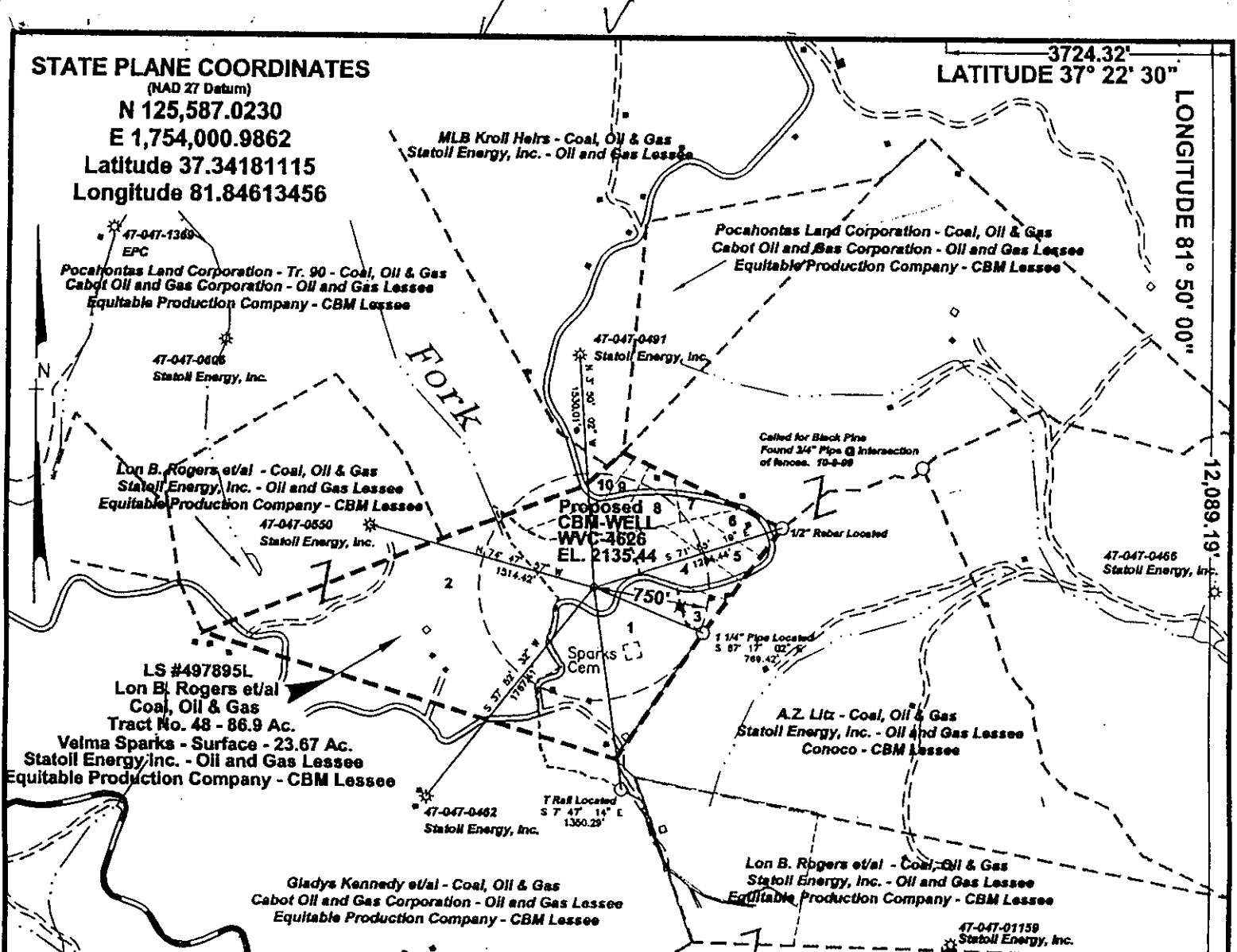


**STATE PLANE COORDINATES**

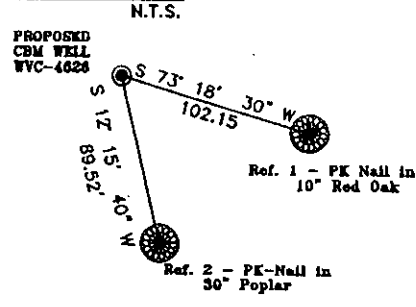
(NAD 27 Datum)  
**N 125,587.0230**  
**E 1,754,000.9862**  
**Latitude 37.34181115**  
**Longitude 81.84613456**

3724.32'  
**LATITUDE 37° 22' 30"**

**LONGITUDE 81° 50' 00"**



**REFERENCES**



**Lon B. Rogers et al - Coal, Oil and Gas**  
**Lon B. Rogers Tract No. 48 - 86.9 Ac. - Lease # 497895L**  
**Velma Sparks - Surface - 23.67 Ac.**  
**Statoll Energy Inc. - Oil and Gas Lessee**  
**Equitable Production Company - CBM Lessee**

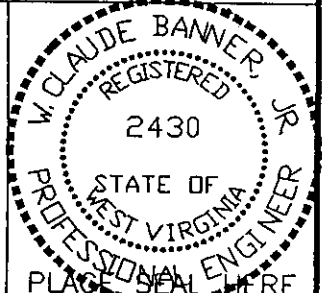
Notes: (+) Denotes location of well on USGS map.

- Topo Location  
 Lon B. Rogers et al - Coal, Oil & Gas  
 Statoll Energy, Inc. - Oil and Gas Lessee  
 Equitable Production Company - CBM Lessee
- o Proposed WVC-3817  
 2.29  
 2.71
- Adjacent Surface Tracts
1. Velma Sparks
  2. Errett Grizzel
  3. Oscar Foley
  4. Oscar Foley
  5. Elefinia Blevins
  6. Gwendolyn Hocoever
  7. Wilma Deskins
  8. Joyce and Barbara Hawks
  9. Bearl Asbury
  10. Joe Kennedy
- Data taken from McDowell County Records

FILE No. 4-5-00-3SP  
 DRAWING NAME WVC-4626\WVC-4626  
 SCALE 1" = 1000'  
 MINIMUM DEGREE OF ACCURACY 1:2500  
 PROVEN SOURCE OF ELEVATION Global Positioning System (GPS)

I THE UNDERSIGNED, HEREBY CERTIFY THAT THIS PLAT IS CORRECT TO THE BEST OF MY KNOWLEDGE AND BELIEF AND SHOWS ALL THE INFORMATION REQUIRED BY LAW AND THE REGULATIONS ISSUED AND PRESCRIBED BY THE DEPARTMENT OF MINES.

(SIGNED) W. Claude Banner  
 R.P.E. 2430 R.P.S.



**STATE OF WEST VIRGINIA**  
**DIVISION OF ENVIRONMENTAL PROTECTION**  
**OFFICE OF OIL AND GAS**  
**NITRO, WV**

DATE APRIL 14 2000  
 OPERATOR'S WELL No. WVC-4626  
 API WELL No. 47 - 047 - 01461C  
 STATE COUNTY PERMIT

WELL TYPE: OIL GAS CBM LIQUID INJECTION WASTE DISPOSAL  
 (IF "GAS") PRODUCTION X STORAGE DEEP SHALLOW

LOCATION: ELEVATION 2135.44 WATER SHED COALBANK FORK OF MEATHOUSE FORK  
 DISTRICT SANDY RIVER COUNTY McDOWELL  
 QUADRANGLE Bradshaw T. S. Inger 15'

SURFACE OWNER VELMA SPARKS ACREAGE 23.67  
 CBM ROYALTY OWNER LON B. ROGERS ET/AL LEASE ACREAGE 3836.13  
 LEASE No. 497895L

PROPOSED WORK: DRILL X CONVERT DRILL DEEPER REDRILL FRACTURE OR STIMULATE X PLUG OFF OLD FORMATION PERFORATE NEW FORMATION OTHER PHYSICAL CHANGE IN WELL (SPECIFY)  
 PLUG AND ABANDON CLEAN OUT AND REPLUG

TARGET FORMATION PENNSYLVANIAN COALS ESTIMATED DEPTH AUG 25 2000  
 WELL OPERATOR EQUITABLE PRODUCTION COMPANY DESIGNATED AGENT LARRY AYLESTOCK  
 ADDRESS 1989 EAST STONE DRIVE ADDRESS P.O. BOX 1550  
KINGSPORT, TN 37660

6-6 350

Mc Dow 1461C

*JB*

State of West Virginia  
Division of Environmental Protection  
Section of Oil and Gas

Well Operator's Report of Well Work

Farm Name: Sparks, Velma

Operator Well No.: WVC-4626  
(WVC-504626)

LOCATION: Elevation: 2135.44'

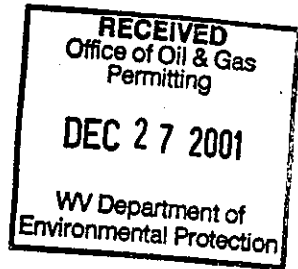
Quadrangle: Iager

District: Sandy River

County: McDowell

Latitude: 12,089.19' Feet South of  
Longitude: 3724.32' Feet West of

Minutes Seconds  
37 Deg. 22 30  
81 Deg. 50 0



Company: Equitable Production Company  
P.O. Box 2347, 1710 Pennsylvania Avenue  
Charleston, WV 25328

Agent: Stephen G. Perdue

Inspector: Ofie Helmick

Permit Issued: 8/23/00

Well work commenced: 09/12/01

Well work completed: 10/16/01

Verbal Plugging

Permission granted on: \_\_\_\_\_

Rotary Rig  Cable Rig \_\_\_\_\_

Total Depth 2060' feet

Fresh water depths (ft) \_\_\_\_\_

Salt water depths (ft) \_\_\_\_\_

Casing & Tubing Size	Used in Drilling	Left in Well	Cement Fill Up Cu. Ft.
12 3/4"	25'	25'	grouted
9 5/8"	308'	308'	125.1 ft³
4 1/2"	2033'	2033'	225.75 ft³

Is coal being mined in area? \_\_\_\_\_

Coal Depths (ft): 70'-72'; 134'-136'; 226'-228'; 284'-288'; 508'-510'; 915'-918'; 980'-982'  
990'-992'; 1200'-1204'; 1310'-1313'; 1575'-1578'; 1650'-1653'; 1735'-1738'  
1790'-1793'; 1820'-1823'; 1870'-1873'

OPEN FLOW DATA

Producing formation Penn Coal Seams

Gas: Initial open flow \_\_\_\_\_ MCF/d

Oil: Initial open flow \_\_\_\_\_ Bbl/d

Final open flow: 34 (in line) MCF/d

Final open flow: \_\_\_\_\_

Time of open flow between initial and final tests \_\_\_\_\_ Hours

Static rock pressure 170 psig (surface pressure) after \_\_\_\_\_ Hours

Pay Zone Depth (ft): \_\_\_\_\_ See Attach for details

Second producing formation \_\_\_\_\_

Gas: Initial open flow \_\_\_\_\_ MCF/d

Oil: Initial open flow \_\_\_\_\_ Bbl/d

Final open flow: \_\_\_\_\_ MCF/d

Final open flow: \_\_\_\_\_

Time of open flow between initial and final tests \_\_\_\_\_ Hours

Static rock pressure \_\_\_\_\_ psig (surface pressure) after \_\_\_\_\_ Hours

NOTE: ON BACK OF THIS FORM PUT THE FOLLOWING: 1) DETAILS OF PERFORATED INTERVALS, FRACTURING OR STIMULATING, PHYSICAL CHANGE, ETC. 2) THE WELL LOG WHICH IS A SYSTEMATIC DETAILED GEOLOGICAL RECORD OF ALL FORMATIONS, INCLUDING COAL ENCOUNTERED BY THE WELLBORE.

*Kathy L. Jewney*  
For: Equitable Production Company

By: *Rob A. Davis*  
Date: 12/18/01

FEB 01 2002

MCDOWELL 1401

**EQUITABLE PRODUCTION COMPANY**  
**WR-35 COMPLETION REPORT - Attachment**  
**Well Treatment Summary**

Well: WVC-504626

API# 47-047-01461

Date	10/02/01	10/02/01			
Type Frac Acid, N <sub>2</sub> , Foam, Water	65-70 Q Foam	65-70 Q Foam			
Zone Treated	Lower Coal Seams	Upper Coal Seams			
# Perfs From - To:	19 1567' - 1877'	10 1198' - 1321'			
BD Pressure @ psi	3090	3910			
ATP psi	3348	3588			
Avg. Rate, B=B/M, S= SCF/M	25 B (foam)	19.5 B (foam)			
Max. Treat Press psi	3910	3850			
ISIP psi	2159	1350			
Frac Gradient	1.69	1.5			
10 min S-I Pressure	1240 (5 min)	970 (5 min)			
Material Volume					
Sand-sks	97	99			
Water-bbl	419	328			
SCF N <sub>2</sub>	749,819	495,238			
Acid-gal	904 gal 7.7%	600 gal 7.7%			
NOTES:					

TOP	BOTTOM	FORMATION	REMARKS
0	25'	Over Burdon	
25'	70'	Sandy Shale	
70'	72'	Coal	
72'	100	Sand stone	
100'	134'	Sandy Shale	
134'	136'	Coal	
136'	226'	Sand Stone	
226'	228'	Coal	
228'	260'	Sandy Shale	
260'	284'	Sand Stone	
284'	288'	Coal	
288'	360'	Sandy Shale	
360'	363'	Open Mine	
363'	400'	Sandy Shale	
400'	508'	Sand Stone	
508'	510'	Coal	
510'	915'	Sandy Shale	
915'	918'	Coal	
918'	980'	Sandy Shale	
980'	982'	Coal	
982'	990'	Sandy Shale	
990'	992'	Coal	
1197.5'	1201.5'	Beckley	
1317.75'	1322'	Fire Creek	
1566.5'	1568.5'	Poca 6	
1646.75'	1648.25'	Poca 4	
1678.75'	1679.25'	Poca 4L	
1734.75'	1736.5'	Poca 3	
1785.5'	1789.25'	Poca 2	
1829.25'	1831'	Poca 1	

1876.25'

1877.5 Squire Jim  
2060' TD

FEB 01 2002

MCDW 1461