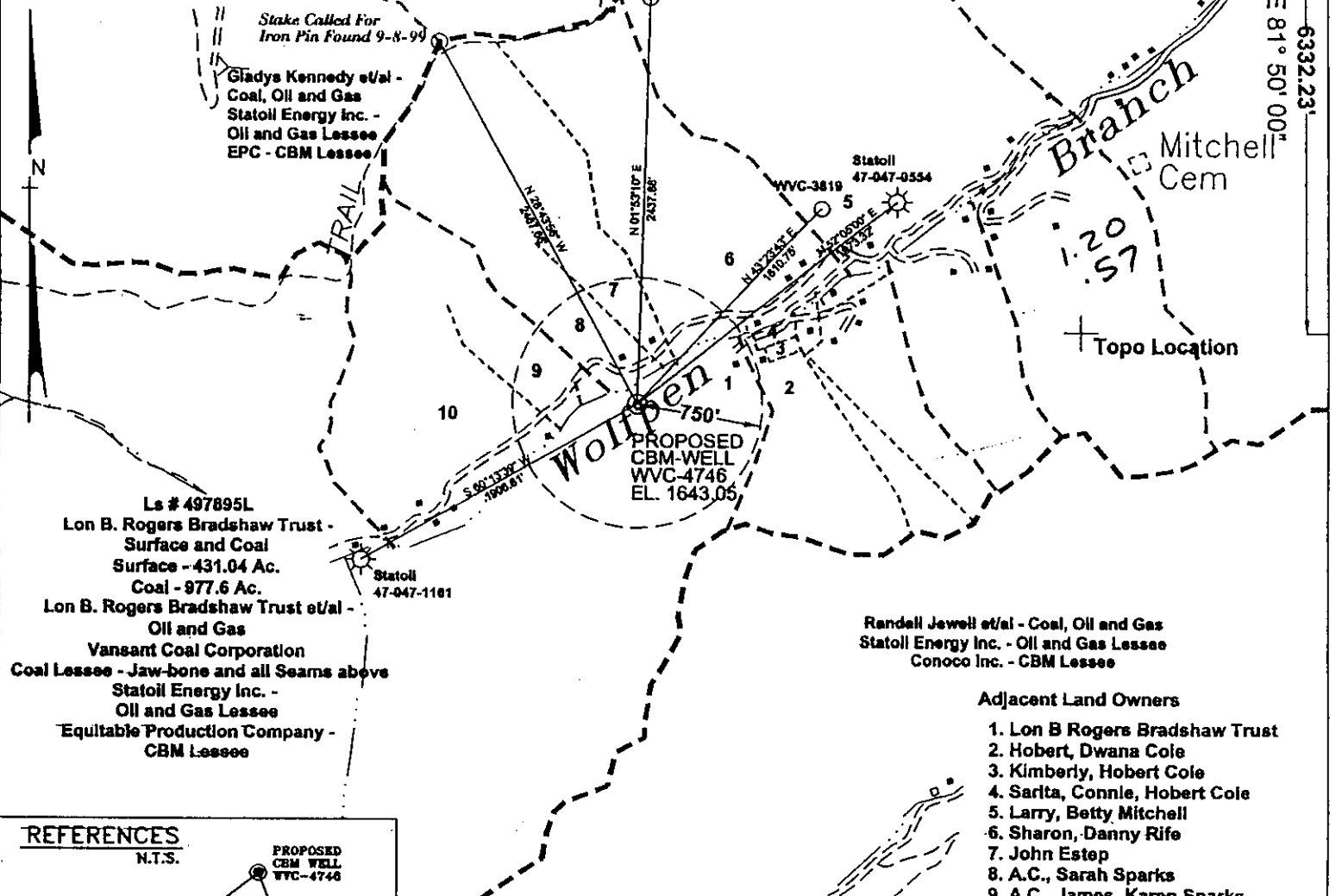


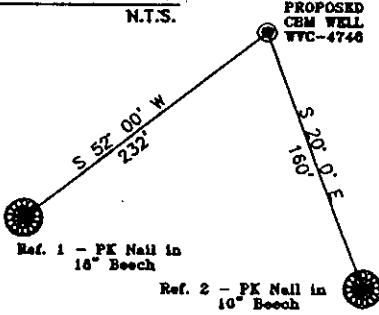
STATE PLANE COORDINATES

(NAD 27 Datum)
 N 116,167.2437
 E 1,754,668.1939
 Latitude 37.31595925
 Longitude 81.84354489

2969.06'
 LATITUDE 37° 20' 00"
 LONGITUDE 81° 50' 00"



REFERENCES



Adjacent Land Owners

1. Lon B Rogers Bradshaw Trust
2. Hobert, Dwana Cole
3. Kimberly, Hobert Cole
4. Sarita, Connie, Hobert Cole
5. Larry, Betty Mitchell
6. Sharon, Danny Rife
7. John Estep
8. A.C., Sarah Sparks
9. A.C., James, Karen Sparks
10. Mary, Albert Gibson

Data on Adjacent Parcels taken from
 McDowell County Tax Records

Lon B. Rogers Bradshaw Trust - Surface and Coal
 Surface - 431.04 Ac. Coal - 977.6 Ac.
 Lease # 497895L - 977.6 Ac.
 Lon B. Rogers Bradshaw Trust et/al - Oil and Gas
 Vansant Coal Corporation - Coal Lessee - Jaw-bone and all seams above
 Statoil Energy Inc. - Oil and Gas Lessee
 Equitable Production Company - CBM Lessee

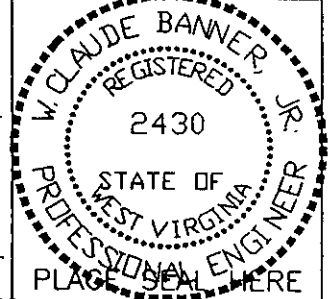
Notes: (+) Denotes location of well on USGS map.

Hagerman Sch

FILE No. 6-19-00-1SP
 DRAWING NAME \WVC-4680\WVC-4680
 SCALE 1" = 1000'
 MINIMUM DEGREE OF ACCURACY 1:2500
 PROVEN SOURCE OF ELEVATION Global Positioning System (GPS)

I THE UNDERSIGNED, HEREBY CERTIFY THAT THIS PLAT IS CORRECT TO THE BEST OF MY KNOWLEDGE AND BELIEF AND SHOWS ALL THE INFORMATION REQUIRED BY LAW AND THE REGULATIONS ISSUED AND PRESCRIBED BY THE DEPARTMENT OF MINES.

(SIGNED) *[Signature]*
 R.P.E. 2430 R.P.S.



**STATE OF WEST VIRGINIA
 DIVISION OF ENVIRONMENTAL PROTECTION
 OFFICE OF OIL AND GAS
 NITRO, WV**

DATE AUGUST 17 2000
 OPERATOR'S WELL No. WVC-4746
 API WELL No. 47 - 047 - 014660
 STATE COUNTY PERMIT

WELL TYPE: OIL GAS CBM LIQUID INJECTION WASTE DISPOSAL
 (IF "GAS") PRODUCTION X STORAGE DEEP SHALLOW
 LOCATION: ELEVATION 1643.05 WATER SHED WOLF PEN BRANCH OF BRADSHAW CREEK OF DRY FORK
 DISTRICT SANDY RIVER COUNTY McDOWELL
 QUADRANGLE BRADSHAW, WV

SURFACE OWNER LON B. ROGERS BRADSHAW TRUST ACREAGE ± 431.04 TAX MAP 344 P/O 343-3
 CBM ROYALTY OWNER LON B. ROGERS BRADSHAW TRUST ET/AL LEASE ACREAGE 3836.13
 LEASE No. 497895L

PROPOSED WORK: DRILL X CONVERT DRILL DEEPER REDRILL FRACTURE OR
 STIMULATE X PLUG OFF OLD FORMATION PERFORATE NEW
 FORMATION OTHER PHYSICAL CHANGE IN WELL (SPECIFY)
 PLUG AND ABANDON CLEAN OUT AND REPLUG
 TARGET FORMATION PENNSYLVANIAN COALS ESTIMATED DEPTH SEP 08 2000
 WELL OPERATOR EQUITABLE PRODUCTION COMPANY DESIGNATED AGENT LARRY AYLESTOCK
 ADDRESS 1710 PENNSYLVANIA AVENUE ADDRESS P.O. BOX 1550
CHARLESTON, WV 25328 CLARKSBURG, WV 26302

6-6 383

McDowell 1466 C

State of West Virginia
Division of Environmental Protection
Section of Oil and Gas

Reviewed *[Signature]*

Well Operator's Report of Well Work

Farm Name: Bradshaw Trust, etal Operator Well No.: WVC-4746

LOCATION: Elevation: 1,643.05 Quadrangle: Bradshaw
District: Sandy River County: McDowell

Latitude: 6332 Feet South of Deg. 37 Minutes 20 Seconds 0
Longitude: 2969 Feet West of Deg. 81 Minutes 50 Seconds 0

Company: Equitable Production Company
P.O. Box 2347, 1710 Pennsylvania Avenue
Charleston, WV 25328

Agent: Steve Perdue

Inspector: Ofie Helmick
Permit Issued: 9/7/00

Well work commenced: 09/25/00
Well work completed: 10/24/00

Verbal Plugging

Permission granted on: _____

Rotary Rig X Cable Rig _____

Total Depth 1550 feet

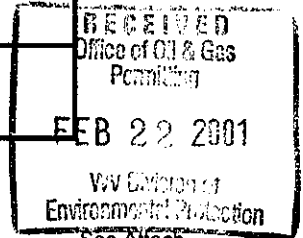
Fresh water depths (ft) _____

Salt water depths (ft) _____

Is coal being mined in area? _____

Coal Depths (ft): See Reverse

Casing & Tubing Size	Used in Drilling	Left in Well	Cement Fill Up Cu. Ft.
12-3/4"	36'	36'	Grtd
9-5/8"	345'	345'	132 FT ³
4-1/2"	1538'	1538'	297 FT ³
1-1/2"		1487'	



OPEN FLOW DATA

Producing formation Poco 7,6,5,4,3,2/Squire Jim/Firecreek/L Firecreek/Poco 9,8 Pay Zone Depth (ft): for details

Gas: Initial open flow Not Noted Bbl/d
Final open flow 59 Final open flow: _____
Time of open flow between initial and final tests _____ Hours

Static rock pressure 280 psig (surface pressure) after _____ Hours

Second producing formation _____ Pay Zone Depth (ft): _____

Gas: Initial open flow _____ MCF/d Oil: Initial open flow _____ Bbl/d
Final open flow: _____ MCF/d Final open flow: _____
Time of open flow between initial and final tests _____ Hours

Static rock pressure _____ psig (surface pressure) after _____ Hours

NOTE: ON BACK OF THIS FORM PUT THE FOLLOWING: 1) DETAILS OF PERFORATED INTERVALS, FRACTURING OR STIMULATING, PHYSICAL CHANGE, ETC. 2) THE WELL LOG WHICH IS A SYSTEMATIC DETAILED GEOLOGICAL RECORD OF ALL FORMATIONS, INCLUDING COAL ENCOUNTERED BY THE WELLBORE.

For: BLAZER ENERGY CORPORATION

By: *[Signature]*
Date: 2/20/01

McDow 1466

MAR 02 2001

EASTERN STATES OIL & GAS, INC.
WR-35 COMPLETION REPORT - Attachment
Well Treatment Summary

Well: WVC-4746

API# 47-047-01466

Date	10/19/2000	10/19/2000				
Type Frac Acid, N ₂ , Foam, Water	70 Q Foam	70 Q Foam				
Zone Treated	Poco 7,6,5,4,3,2, Jim Squire,	Firecreek/ L Firecreek/ Poco 9,8				
# Perfs From - To:	18 1007.5- 1342.5	13 781-971.5				
BD Pressure @ psi	1711	1295				
ATP psi	3700	3400				
Avg. Rate, B=B/M, S= SCF/M	22 B Foam	28 B Foam				
Max. Treat Press psi	3900	4000				
ISIP psi	2300	1900				
Frac Gradient	2.32	2.31				
10 min S-I Pressure	1698 5 min	1380 5 min				
Material Volume						
Sand-sks	132	107				
Water-bbl	504	422				
SCF N ₂	809,811	478,929				
Acid-gal	750 gal 7.5%	600 gal 7.5%				
NOTES:						

TOP	BASE	FORMATION
780	783	Firecreek
969	972	Poca 8
1057.5	1061	Poca 5
1087.5	1090.5	Poca 4
1174	1176.5	Poca 3
1217	1221	Poca 2
1341.5	1342.75	Squire Jim
1363		Mauch Chunk
1550		TD

REMARKS*

