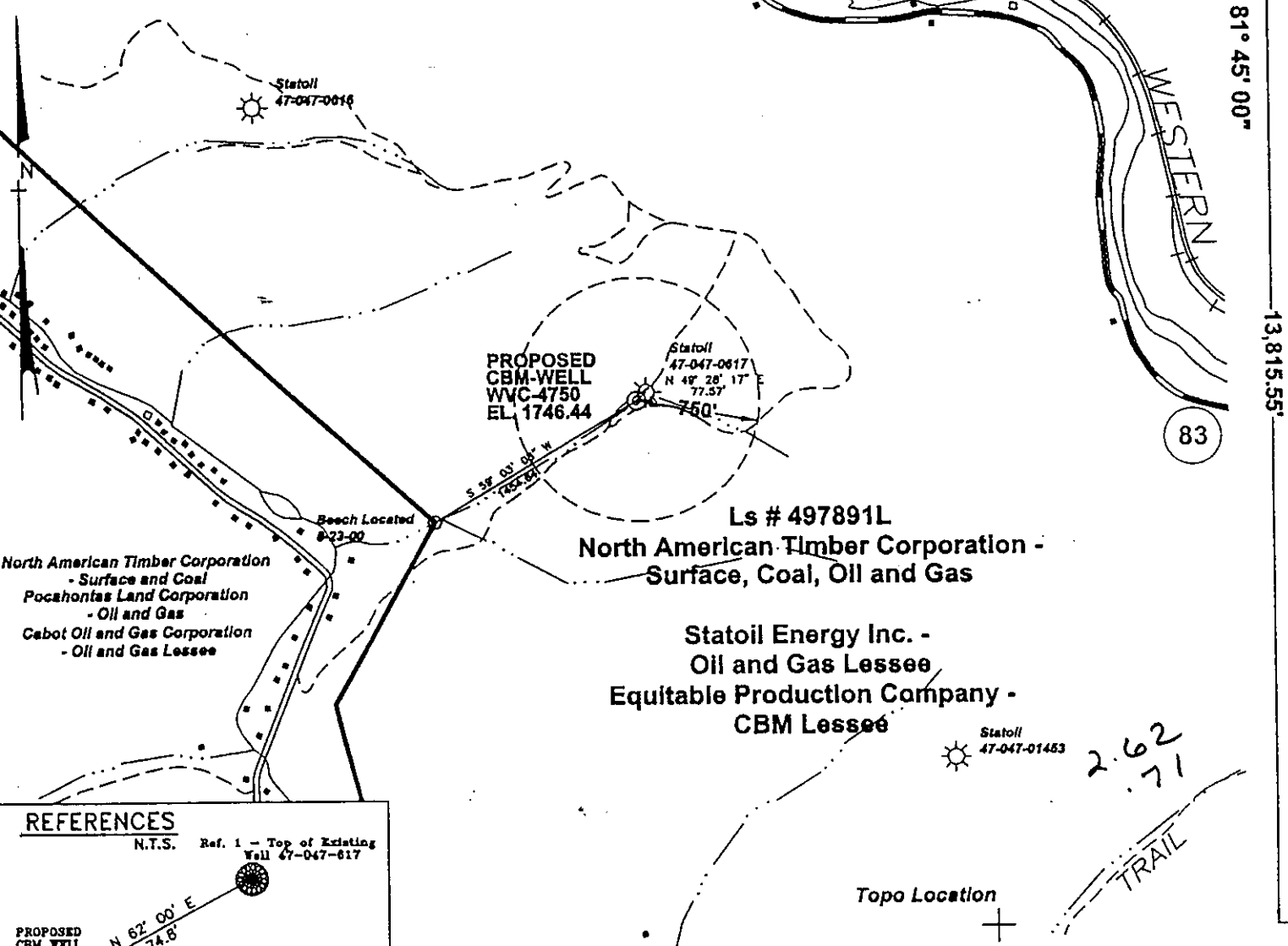


STATE PLANE COORDINATES
(NAD 27 Datum)
N 123,648.1937
E 1,778,228.5014
Latitude 37.33706422
Longitude 81.76275105

3,704.40'
LATITUDE 37° 22' 30"

LONGITUDE 81° 45' 00"

13,815.55'



PROPOSED
CBM WELL
WVC-4750
EL. 1746.44

Statolith
47-047-0617
N 48° 28' 17"
77.59'

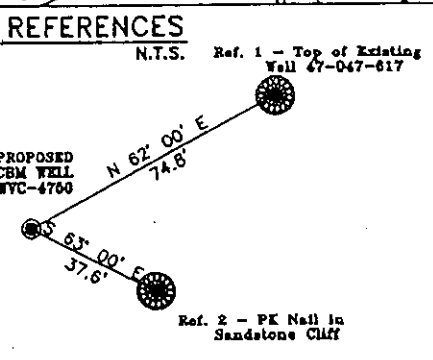
Ls # 497891L

North American Timber Corporation -
Surface, Coal, Oil and Gas

Statoil Energy Inc. -
Oil and Gas Lessee

Equitable Production Company -
CBM Lessee

North American Timber Corporation
- Surface and Coal
Pocahontas Land Corporation
- Oil and Gas
Cabot Oil and Gas Corporation
- Oil and Gas Lessee



North American Timber Corporation - Surface, Coal, Oil and Gas
Lease # 497891L - 5086.69 Ac.

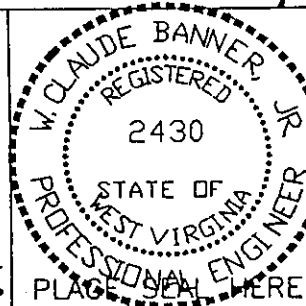
Statoil Energy Inc. - Oil and Gas Lessee
Equitable Production Company - CBM Lessee

Notes: (+) Denotes location of well on USGS map.
No known Domestic Water Users within 1000' feet of WVC-4750

FILE No. 8-23-00-4SP
DRAWING NAME \WVC-4750\WVC-4750
SCALE 1" = 1000'
MINIMUM DEGREE OF ACCURACY 1:2500
PROVEN SOURCE OF ELEVATION Global Positioning System (GPS)

I THE UNDERSIGNED, HEREBY CERTIFY THAT THIS PLAT IS CORRECT TO THE BEST OF MY KNOWLEDGE AND BELIEF AND SHOWS ALL THE INFORMATION REQUIRED BY LAW AND THE REGULATIONS ISSUED AND PRESCRIBED BY THE DEPARTMENT OF MINES.

(SIGNED) W. Claude Banner, Jr.
R.P.E. 2430 R.P.S. 2430



STATE OF WEST VIRGINIA
DIVISION OF ENVIRONMENTAL PROTECTION
OFFICE OF OIL AND GAS
NITRO, WV

DATE AUGUST 24 2000
OPERATOR'S WELL No. WVC-4750
API WELL No. 47 - 047 - 01468C
STATE COUNTY PERMIT

WELL TYPE: OIL GAS CBM LIQUID INJECTION WASTE DISPOSAL
(IF "GAS") PRODUCTION X STORAGE DEEP SHALLOW
LOCATION: ELEVATION 1746.44 WATER SHED TRIBUTARY OF LITTLE SLATE CREEK OF DRY FORK
DISTRICT BIG CREEK COUNTY McDOWELL
QUADRANGLE BRADSHAW, WV
SURFACE OWNER NORTH AMERICAN TIMBER CORPORATION ACREAGE ± 1034.09 TAX MAP 326 Parcel
CBM ROYALTY OWNER NORTH AMERICAN TIMBER CORPORATION LEASE ACREAGE 5086.69
LEASE No. 497891L

PROPOSED WORK: DRILL X CONVERT DRILL DEEPER REDRILL FRACTURE OR STIMULATE X PLUG OFF OLD FORMATION PERFORATE NEW FORMATION OTHER PHYSICAL CHANGE IN WELL (SPECIFY)
PLUG AND ABANDON CLEAN OUT AND REPLUG
TARGET FORMATION PENNSYLVANIAN COALS ESTIMATED DEPTH
WELL OPERATOR EQUITABLE PRODUCTION COMPANY DESIGNATED AGENT LARRY AYLESTOCK
ADDRESS 1710 PENNSYLVANIA AVENUE ADDRESS P.O. BOX 1550
CHARLESTON, WV 25328 CLARKSBURG, WV 26302

SEP 08 2000

6-6 383

Mc Dow 1468C

State of West Virginia
Division of Environmental Protection
Section of Oil and Gas

Reviewed AR

Well Operator's Report of Well Work

Farm Name: North American Timber Co Operator Well No.: WVC-4750

LOCATION: Elevation: 1,746.44 Quadrangle: Bradshaw
District: Big Creek County: McDowell

Latitude: 13816 Feet South of Deg. 37 Minutes 22 Seconds 30
Longitude: 3704 Feet West of Deg. 81 Minutes 45 Seconds 0

Company: Equitable Production Company
P.O. Box 2347, 1710 Pennsylvania Avenue
Charleston, WV 25328

Agent: Steve Perdue

Inspector: Ofie Helmick
Permit Issued: 9/7/00

Well work commenced: 09/29/00
Well work completed: 12/20/00

Verbal Plugging

Permission granted on: _____

Rotary Rig X Cable Rig _____

Total Depth 1409 feet

Fresh water depths (ft) _____

Salt water depths (ft) _____

Is coal being mined in area? _____

Coal Depths (ft): See Reverse

Casing & Tubing Size	Used in Drilling	Left in Well	Cement Fill Up Cu. Ft.
12-3/4"	30'	30'	Grtd
9-5/8"	723'	723'	313 FT ³
4-1/2"	1394'	1394'	348 FT ³
1-1/2"		1344'	

WV Section of
Oil & Gas
Permitting
FEB 22 2001
WV Section of
Environmental Protection

OPEN FLOW DATA

See Attach
for details

Producing formation Poco 9,8,5,3 Pay Zone Depth (ft): _____

Gas: Initial open flow _____ Odor _____ Bbl/d _____
 Final open flow _____ TSTM _____ Final open flow: _____
 Time of open flow between initial and final tests _____ Hours _____
 Static rock pressure 100 psig (surface pressure) after _____ Hours _____

Second producing formation _____ Pay Zone Depth (ft): _____

Gas: Initial open flow _____ MCF/d Oil: Initial open flow _____ Bbl/d _____
 Final open flow: _____ MCF/d Final open flow: _____
 Time of open flow between initial and final tests _____ Hours _____
 Static rock pressure _____ psig (surface pressure) after _____ Hours _____

NOTE: ON BACK OF THIS FORM PUT THE FOLLOWING: 1) DETAILS OF PERFORATED INTERVALS, FRACTURING OR STIMULATING, PHYSICAL CHANGE, ETC. 2) THE WELL LOG WHICH IS A SYSTEMATIC DETAILED GEOLOGICAL RECORD OF ALL FORMATIONS, INCLUDING COAL ENCOUNTERED BY THE WELLBORE.

For: BLAZER ENERGY CORPORATION

By: Rob A. Davis
Date: 2/20/01

MCDOW 1468

MAR 02 2001

EASTERN STATES OIL & GAS, INC.
WR-35 COMPLETION REPORT - Attachment
Well Treatment Summary

Well: WVC-4750

API# 47-047-01468

Date	10/19/2000				
Type Frac Acid, N ₂ , Foam, Water	70 Q Foam				
Zone Treated	Poco 9,8,5,3				
# Perfs From - To:	11 777.5-1218.5				
BD Pressure @ psi	2092				
ATP psi	3700				
Avg. Rate, B=B/M, S= SCF/M	30 B Foam				
Max. Treat Press psi	4100				
ISIP psi	1200				
Frac Gradient	1.78				
10 min S-I Pressure	930 (5 min)				
Material Volume					
Sand-sks	126				
Water-bbl	444				
SCF N ₂	570,000				
Acid-gal	460 gal 7.5%				
NOTES:					

TOP	BASE	FORMATION	REMARKS*
725	727	Firecreek	
820	822	Poca 8	
1072	1074	Poca 4	
1215	1220	Poca 3	
1269	1271	Poca 2	
1316	1318	Squire Jim	
1409		TD	