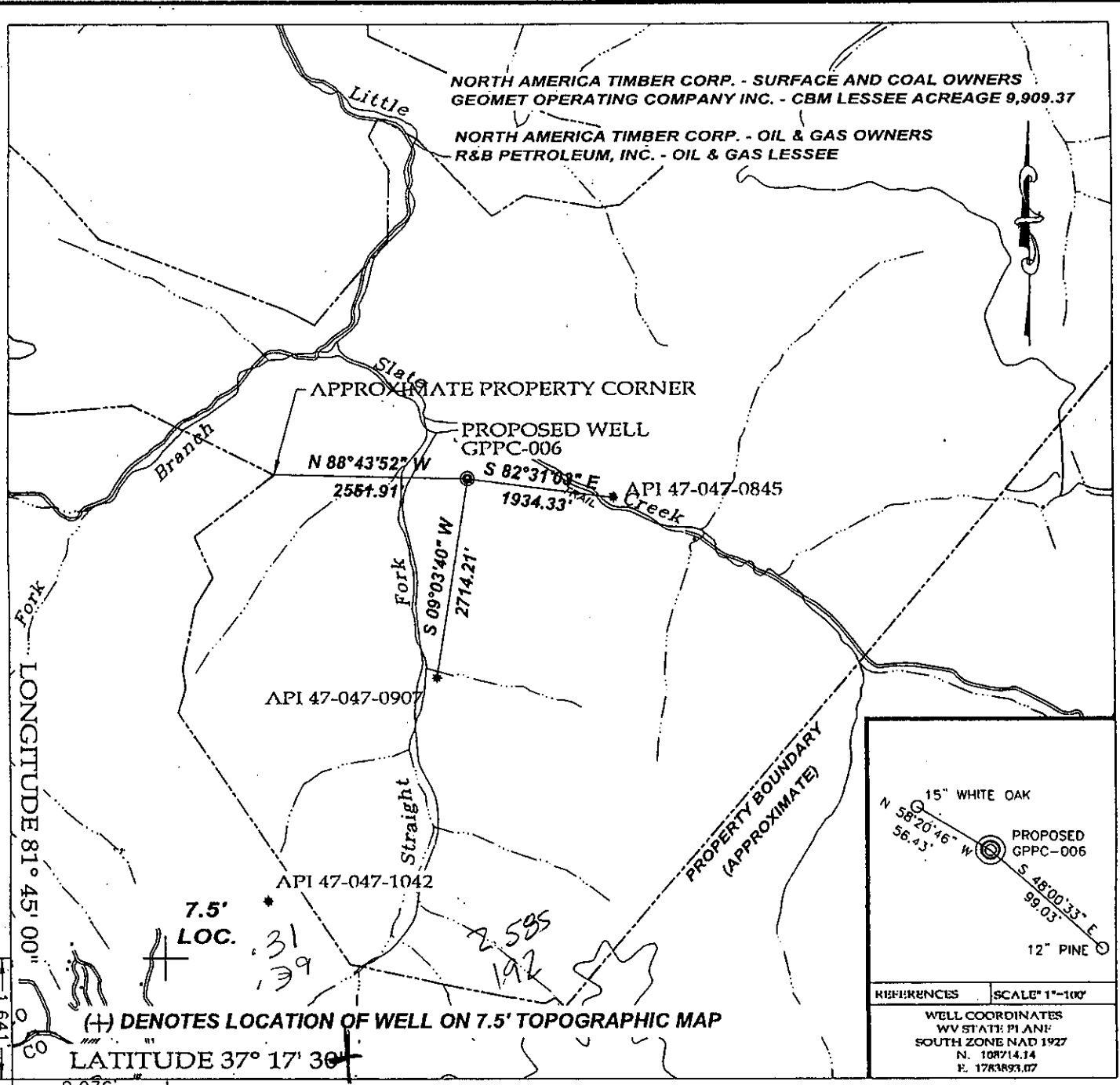


37 20

814230



15" WHITE OAK  
 N 58°20'46" W 56.43'  
 PROPOSED GPPC-006  
 S 48°00'33" E 99.03'  
 12" PINE

REFERENCES    SCALE 1"=100'

WELL COORDINATES  
 WV STATE PLANE  
 SOUTH ZONE NAD 1927  
 N. 108714.14  
 E. 1763893.07

LONGITUDE 81° 45' 00"  
 LATITUDE 37° 17' 30"  
 (+) DENOTES LOCATION OF WELL ON 7.5' TOPOGRAPHIC MAP

**TEE Engineering Company, Inc.**  
 320 Cutlers Hill Court  
 Lexington, KY 40509  
 (859) 263-5350  
 Fax (859) 263-5345

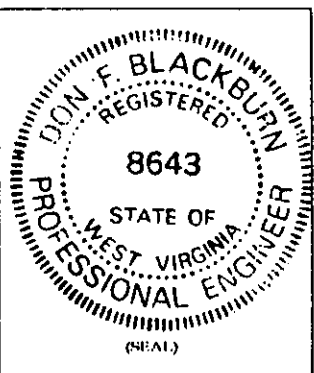
**GeoMet Operating Company, Inc.**  
 Well No. GPPC-006

FILE NO. 1883-10  
 DRAWING NO. GPPC-006 PLAT  
 SCALE: 1" = 2,000'  
 MIN. DEGREE OF ACCURACY 1 : 2,500  
 PROVEN SOURCE OF ELEVATION  
 GPS STATION TEC-1 (ELEV. 2406.60)

I, THE UNDERSIGNED, HEREBY CERTIFY THAT THIS PLAT IS CORRECT TO THE BEST OF MY KNOWLEDGE AND BELIEF AND SHOWS ALL THE INFORMATION REQUIRED BY LAW AND THE REGULATIONS ISSUED AND PRESCRIBED BY THE DEPARTMENT OF MINES.

*Don F. Blackburn*  
 (SIGNATURE)

R.P.E. 8643    R.P.S. \_\_\_\_\_



**STATE OF WEST VIRGINIA**  
 DEPARTMENT OF ENVIRONMENTAL PROTECTION  
 OFFICE OF OIL AND GAS

DATE JUNE 28, 2001  
 OPERATOR'S WELL NO. GPPC-006  
 API WELL NO. 47 - 047 - 01542C  
 STATE COUNTY PERMIT

WELL TYPE: OIL  GAS  CBM LIQUID INJECTION  WASTE DISPOSAL   
 (IF "GAS") PRODUCTION  STORAGE  DEEP  SHALLOW

LOCATION: ELEVATION 1,939.10' WATERSHED STRAIGHT FORK OF LITTLE SLATE CREEK  
 DISTRICT BIG CREEK COUNTY McDOWELL  
 QUADRANGLE WAR

SURFACE OWNER NORTH AMERICA TIMBER CORP. ACREAGE 9,909.37  
 CBM ROYALTY OWNER NORTH AMERICA TIMBER CORP. LEASE ACREAGE 9,909.37  
 LEASE NO. RECORDING IN PROGRESS

PROPOSED WORK: DRILL  CONVERT  DRILL DEEPER  REDRILL  FRACTURE OR  
 STIMULATE  PLUG OFF OLD FORMATION  PERFORATE NEW  
 FORMATION  OTHER PHYSICAL CHANGE IN WELL (SPECIFY) \_\_\_\_\_

PLUG AND ABANDON  CLEAN OUT AND REPLUG

TARGET FORMATION NEW RIVER AND POCAHONTAS COALS ESTIMATED DEPTH 1,758'  
 WELL OPERATOR GEOMET OPERATING COMPANY, INC. DESIGNATED AGENT BRETT CAMP  
 ADDRESS 1826 3RD AVE. NORTH SUITE 301 ADDRESS 1826 3RD AVE. NORTH SUITE 301  
BESSEMER, ALABAMA 35020 BESSEMER, ALABAMA 35020

McDow 1542C

(Blackburn 370)

State of West Virginia  
Department of Environmental Protection  
Office of Oil and Gas

*[Handwritten signature]*

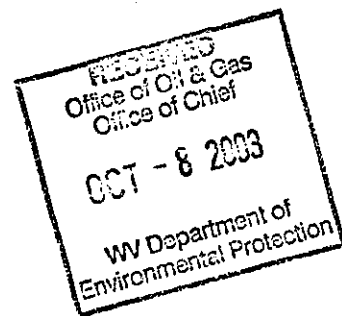
Well Operator's Report of Well Work

FARM NAME: North America Timber OPERATOR WELL NO.: GPPC-006

LOCATION:

Elevation: 1,939.10' Quadrangle: WAR

District: Big Creek County: McDowell  
Latitude: 2,076' Feet South of 37 Deg. 17 Min. 30 Sec.  
Longitude: 1,641' Feet West of 81 Deg. 45 Min. 00 Sec.



Company: <u>GeoMet Operating Company</u>	Casing & Tubing	Used in Drilling	Left in Well	Cement fill up Cu. Ft.
Address: <u>5336 Stadium Trace Parkway, Suite 206 Birmingham, Alabama 35244</u>	<u>13-3/8"</u>	<u>20'</u>	<u>20'</u>	
Agent: <u>Gregg Cleary</u>				
Inspector: <u>Ronnie Scott</u>	<u>8-5/8"</u>	<u>365'</u>	<u>365'</u>	<u>82/Pumped 150</u>
Date Permit Issued: <u>August 21, 2002</u>				
Date Well Work Commenced: <u>August 20, 2002</u>	<u>5-1/2"</u>	<u>1550'</u>	<u>1550'</u>	<u>269/Pumped 293</u>
Date Well Work Completed: <u>August 27, 2002</u>				
Verbal Plugging:				
Date Permission granted on:				
Rotary <u>XXXX</u> Cable Rig				
Total Depth (feet): <u>1572'</u>				
Fresh Water Depth (feet): <u>Unknown</u>				
Salt Water Depth (feet): <u>Unknown</u>				
Is coal being mined in area (N/Y)? <u>No</u>				

Coal Depths (feet): 384, 465, 519, 656, 657, 659, 660, 732, 774, 775, 789, 831, 834, 835, 844, 897, 964, 1050, 1051, 1059, 1061, 1063, 1064, 1099, 1100, 1145, 1237, 1305, 1311, 1373, 1435, 1436, 1442.

OPEN FLOW DATA

Producing formation All Zones Commingled Pay zone depth (ft) \_\_\_\_\_  
Gas: Initial Open Flow N/A MCF/d Oil: Initial Open Flow \_\_\_\_\_ Bbl/d  
Final Open Flow N/A MCF/d Final Open Flow \_\_\_\_\_ Bbl/d  
Time of Open Flow between initial and final tests N/A Hours  
Static Rock Pressure 14 psig (surface pressure) after 96 Hours

NOTE: ON BACK OF THIS FORM PUT THE FOLLOWING: 1). DETAILS OF PERFORATED INTERVALS, FRACTURING OR STIMULATING, PHYSICAL CHANGE, ETC. 2). THE WELL LOG WHICH IS A SYSTEMATIC DETAILED GEOLOGICAL RECORD OF ALL FORMATIONS, INCLUDING COAL ENCOUNTERED BY THE WELLBORE.

SIGNED: \_\_\_\_\_  
BY: *Dundrea Smith*  
DATE: \_\_\_\_\_

OCT 14 2003

McDow 1542

**GeoMet Operating Company, Inc.  
Perforation and Frac Volume Specification**

Well Name Pond Creek 006 PBTID 1570

**Zone and Perforation Table**

Frac Stage 1 Interval			Ball Out	Bridge Plug Set @	Est Sand Weight	Actual Sand Weight
	1433	1436				
N2 Scf	192,000		No Plug		20,000	10,000
Acid	506					
Gel Volume	7,250					
ISIP	3,155					
ATP	2,800					
AIR	18	BPM				
Stage 2 Interval	1,235	1238				
N2 Scf	241,000		Plug @ 1210'			
Acid	21,000					
Gel Volume	8,350					
ISIP	1,122					
ATP	2,200					
AIR	26	BPM				
Stage 3 Interval	1,143	1146				
N2 Scf	251,000		Plug @ 1130'			
Acid	500					
Gel Volume	7,885					
ISIP	2,150					
ATP	2,600					
AIR	27	BPM				
Stage 4 Interval	1,097	1100				
N2 Scf	255,000		Plug @ 1080'			
Acid	500					
Gel Volume	8,273					
ISIP	1,545					
ATP	2,500					
AIR	27	BPM				
Stage 5 Interval	1,049	1064				
N2 Scf	360,000		Plug @ 1000'			
Acid	500					
Gel Volume	10,091					
ISIP	860					
ATP	2,900					
AIR	31	BPM				

Well Name Pond Creek 006

PBTD

1570

**Zone and Perforation Table**

	Ball Out	Bridge Plug Set @	Est Sand Weight	Actual Sand Weight
Stage 6 Interval	895	898		
N2 Scf	253,000		25,000	27,700
Acid	500	15%		
Gel Volume	5,766			
ISIP	1,031			
ATP	2,200			
AIR	27	BPM		
	Plug @ 860'			
Stage 7 Interval	830	833	25,000	31,700
N2 Scf	172,000			
Acid	500			
Gel Volume	8,062			
ISIP	760			
ATP	1,800			
AIR	30	BPM		
	Plug @ 800'			
Stage 8 Interval	773	776	20,000	26,400
N2 Scf	194,000			
Acid	250			
Gel Volume	6,943			
ISIP	1,410			
ATP	1,750			
AIR	30	BPM		
	No Plug			
Stage 9 Interval				
N2 Scf				
Acid				
Gel Volume				
ISIP				
ATP				
AIR		BPM		
Stage 10 Interval				
N2 Scf				
Acid				
Gel Volume				
ISIP				
ATP				
AIR				

NOV 1 2003

M-Dow 1542

**DRILL DATA HOLE - NOAH HORN WELL DRILLING INC**

**COMPANY: GEOMET OPERATING CO**

**HOLE: GPPC-006**

**LOCATION: BUG HURLEY HOLLOW**

**DRILL: RIG # 94**

**DATE STARTED: 08-19-2003**

**DATE COMPLETED: 08-21-2003**

**ELECTRIC LOGGED: YES**

**GROUTED: YES**

DEPTH		THICKNESS	STRATA	REMARKS
FROM	TO	FT.	DESCRIPTION	VOIDS, ETC
0	2	2	OVERBURDEN	
2	20	18	SOFT SAND / SANDSTONE	
				20' W/ 13 3/8" CASING
20	30	10	SANDSTONE	
30	123	93	SANDSTONE / SANDY SHALE / COAL	
123	154	31	SANDY SHALE	
154	185	31	SANDY SHALE / COAL STR / SANDY SHALE	
185	215	30	SAND / SANDY SHALE	
215	245	30	SANDY SHALE / SAND STR	
245	275	30	SAND / SANDY SHALE / COAL STR	
275	305	30	SANDSTONE / SANDY SHALE STR	
305	335	30	SANDY SHALE / SAND	
335	365	30	SANDY SHALE	
365	375	10	SAND	365' W/ 8 5/8" CASING
375	390	15	COAL STR / SANDY SHALE / SANDSTONE	
390	420	30	SANDSTONE	
420	450	30	SANDSTONE / SANDY SHALE / 2 COAL STR	
450	480	30	SANDY SHALE / COAL @460'-462'	
480	510	30	SANDY SHALE / SANDSTONE STR	
510	540	30	SANDY SHALE / SANDSTONE STR/COAL STR	
540	570	30	SANDY SHALE	
570	600	30	SANDY SHALE / COAL	
600	630	30	SANDY SHALE / SANDSTONE STR	
630	660	30	SANDY SHALE / SANDSTONE /	
				COAL @ 650'-655'
660	690	30	SANDSTONE / SANDY SHALE / SANDSTONE	
690	720	30	SANDSTONE / SANDY SHALE / COAL	
720	750	30	SANDSTONE / COAL STR / SANDY SHALE /	
				SANDSTONE
750	780	30	SANDSTONE / SANDY SHALE STR /	
				COAL @ 767'-770'
780	810	30	SANDY SHALE / COAL STR	
810	840	30	SANDSTONE / SANDY SHALE /	
				COAL @ 830'-832'
840	870	30	SANDY SHALE	
870	900	30	SANDY SHALE / SANDSTONE STR /	
				COAL @ 887'-889'
900	930	30	SANDSTONE / SANDY SHALE STR	
930	960	30	SANDSTONE / SANDY SHALE	
960	990	30	COAL STR / SANDY SHALE / SANDSTONE	

PAGE 2  
 GEOMET OPERATING COMPANY INC  
 GPPC-006

FROM	TO	FT.	DESCRIPTION
990	1020	30	SANDY SHALE / SANDSTONE
1020	1050	30	SANDSTONE / SANDY SHALE / COAL @ 1045'-1048'
1050	1080	30	COAL @ 1050' -1055' / SANDY SHALE
1080	1110	30	SANDSTONE / COAL STR / SANDY SHALE
1110	1140	30	SANDY SHALE
1140	1170	30	SANDY SHALE / SAND
1170	1200	30	COAL STR / SANDSTONE / SANDY SHALE
1200	1230	30	SANDSTONE / SANDY SHALE / COAL STR
1230	1260	30	SANDSTONE / SANDY SHALE
1260	1290	30	SANDY SHALE
1290	1320	30	SANDSTONE / COAL STR / SHALE
1320	1350	30	SANDY SHALE
1350	1380	30	SANDY SHALE / COAL STR / SANDY SHALE
1380	1410	30	SANDSTONE
1410	1440	30	SANDSTONE / SANDY SHALE STR
1440	1470	30	SANDSTONE / SANDY SHALE
1470	1500	30	SANDSTONE
1500	1530	30	SANDY SHALE
1530	1560	30	SANDY SHALE / SANDSTONE TD 7 7/8" HOLE 1555' W/ 5 1/2" CASING

1560.00 FT. TOTAL DEPTH  
 20.00 FT. OF 13 3/8" CASING  
 365.00 FT. OF 8 5/8" CASING  
 1555.00 FT. OF 5 1/2" CASING

NOV 14 2003

M. D. M. 1542