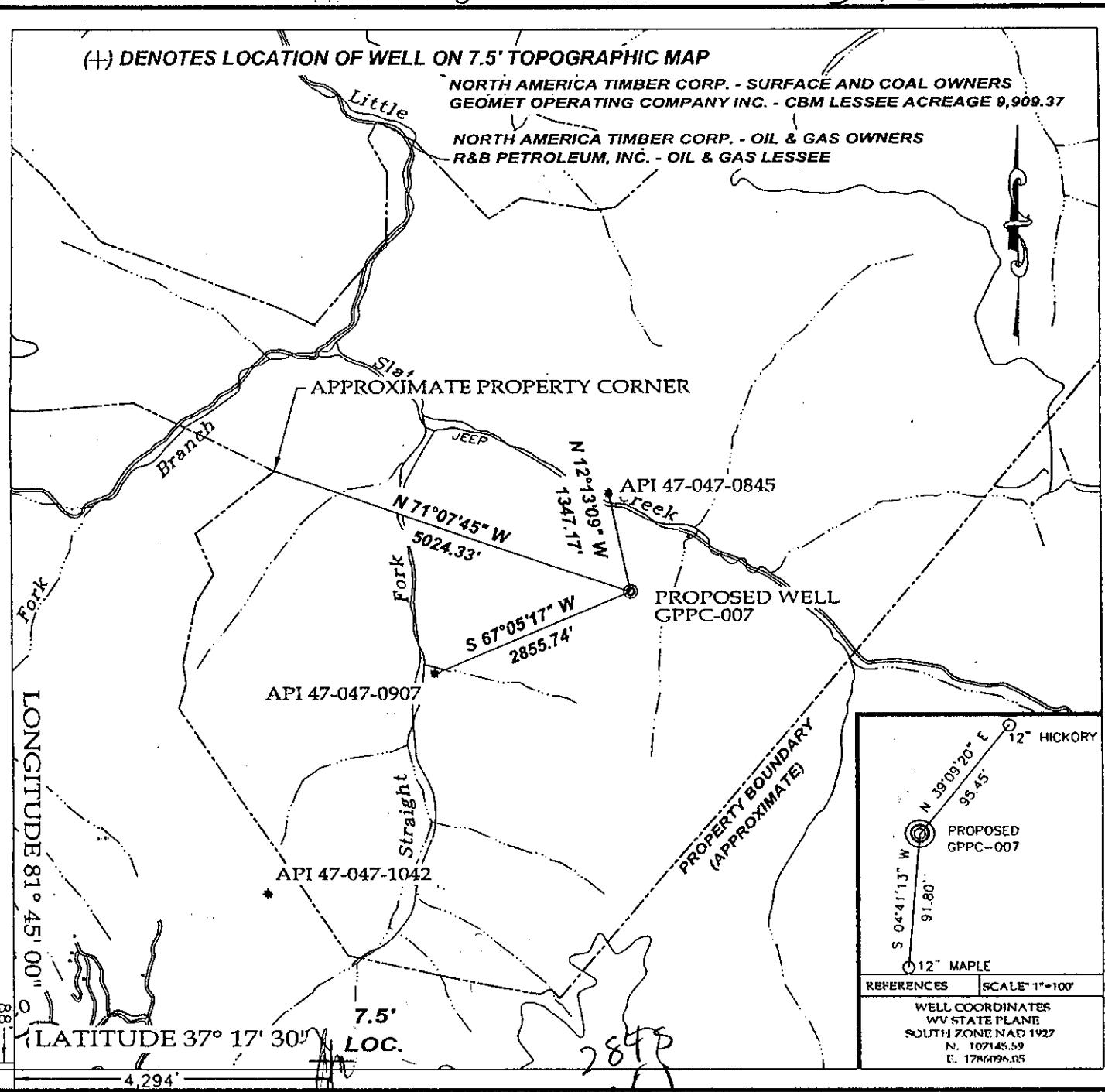
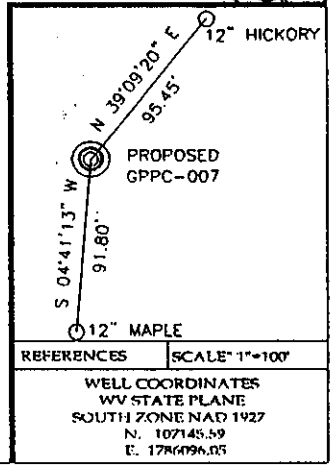


3720



02418



TEE Engineering Company, Inc.
 320 Chesters Hill Court
 Lexington, KY 40509
 (859) 263-5350
 Fax (859) 263-5345



P.O. Box 219
 Stanville, KY 41659
 (606) 478-9024
 Fax (606) 478-9019

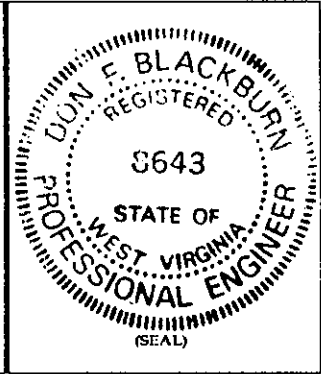
GeoMet Operating Company, Inc.
 Well No. GPPC-007

FILE NO. 1883-10
 DRAWING NO. GPPC-007 PLAT
 SCALE: 1" = 2,000'
 MIN. DEGREE OF ACCURACY 1 : 2,500
 PROVEN SOURCE OF ELEVATION
GPS STATION TEC-1 (ELEV. 2406.60)

I, THE UNDERSIGNED, HEREBY CERTIFY THAT THIS PLAT IS CORRECT TO THE BEST OF MY KNOWLEDGE AND BELIEF AND SHOWS ALL THE INFORMATION REQUIRED BY LAW AND THE REGULATIONS ISSUED AND PRESCRIBED BY THE DEPARTMENT OF MINES.

[Signature]
 (SIGNATURE)

R.P.E. 8643 R.P.S. _____



STATE OF WEST VIRGINIA
 DEPARTMENT OF ENVIRONMENTAL PROTECTION
 OFFICE OF OIL AND GAS

DATE JUNE 28, 2001
 OPERATOR'S WELL NO. GPPC-007
 API WELL NO. 47 - 047 - 01543C
 STATE COUNTY PERMIT

WELL TYPE: OIL _____ GAS CBM LIQUID INJECTION _____ WASTE DISPOSAL _____
 (IF "GAS") PRODUCTION STORAGE _____ DEEP _____ SHALLOW _____
 LOCATION: ELEVATION 2,001.20' WATERSHED STRAIGHT FORK OF LITTLE SLATE CREEK
 DISTRICT BIG CREEK COUNTY McDOWELL
 QUADRANGLE WAR
 SURFACE OWNER NORTH AMERICA TIMBER CORP. ACREAGE 9,909.37
 CBM ROYALTY OWNER NORTH AMERICA TIMBER CORP. LEASE ACREAGE 9,909.37
 LEASE NO. RECORDING IN PROGRESS
 PROPOSED WORK: DRILL CONVERT _____ DRILL DEEPER _____ REDRILL _____ FRACTURE OR
 STIMULATE _____ PLUG OFF OLD FORMATION _____ PERFORATE NEW
 FORMATION _____ OTHER PHYSICAL CHANGE IN WELL (SPECIFY) _____
 PLUG AND ABANDON _____ CLEAN OUT AND REPLUG _____
 TARGET FORMATION NEW RIVER AND POCAHONTAS COALS ESTIMATED DEPTH 1,858'
 WELL OPERATOR GEOMET OPERATING COMPANY, INC. DESIGNATED AGENT BRETT CAMP
 ADDRESS 1826 3RD AVE. NORTH SUITE 301 ADDRESS 1826 3RD AVE. NORTH SUITE 301
BESSEMER, ALABAMA 35020 BESSEMER, ALABAMA 35020

M-Dow 1543C

AUG 24 2001

(Bendshaw 270)

State of West Virginia
Department of Environmental Protection
Office of Oil and Gas

As 13

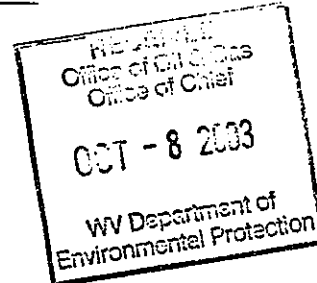
Well Operator's Report of Well Work

FARM NAME: North America Timber OPERATOR WELL NO.: GPPC-007

LOCATION:

Elevation: 2,001.20' Quadrangle: War

District: Big Creek County: McDowell
Latitude: 4,294' Feet South of 37 Deg. 17 Min. 30 Sec.
Longitude: 88' Feet West of 81 Deg. 45 Min. 00 Sec.



Company: <u>GeoMet Operating Company</u>	Casing & Tubing	Used in Drilling	Left in Well	Cement fill up Cu. Ft.
Address: <u>5336 Stadium Trace Parkway, Suite 206 Birmingham, Alabama 35244</u>	<u>13-3/8"</u>	<u>19.75'</u>	<u>19.75'</u>	
Agent: <u>Gregg Cleary</u>				
Inspector: <u>Ronnie Scott</u>	<u>8-5/8"</u>	<u>367'</u>	<u>367'</u>	<u>83/Pumped 150</u>
Date Permit Issued: <u>August 21, 2003</u>				
Date Well Work Commenced: <u>August 15, 2003</u>	<u>5-1/2"</u>	<u>1628'</u>	<u>1628'</u>	<u>283/Pumped 338</u>
Date Well Work Completed: <u>August 26, 2003</u>				
Verbal Plugging:				
Date Permission granted on:				
Rotary <u>XXXX</u> Cable <u> </u> Rig <u> </u>				
Total Depth (feet): <u>1648'</u>				
Fresh Water Depth (feet): <u>Unknown</u>				
Salt Water Depth (feet): <u>Unknown</u>				
Is coal being mined in area (N/Y)? <u>No</u>				

Coal Depths (feet): 370, 393, 542, 655, 656, 657, 658, 659, 795, 796, 797, 819, 885, 903, 969, 1071, 1096, 1123, 1124, 1183, 1219, 1270, 1271, 1272, 1349, 1351, 1462, 1463, 1464, 1471, 1647.

OPEN FLOW DATA

Producing formation All Zones Commingled Pay zone depth (ft) _____
Gas: Initial Open Flow N/A MCF/d Oil: Initial Open Flow _____ Bbl/d
Final Open Flow N/A MCF/d Final Open Flow _____ Bbl/d
Time of Open Flow between initial and final tests N/A Hours
Static Rock Pressure 14 psig (surface pressure) after 96 Hours

NOTE: ON BACK OF THIS FORM PUT THE FOLLOWING: 1). DETAILS OF PERFORATED INTERVALS, FRACTURING OR STIMULATING, PHYSICAL CHANGE, ETC. 2). THE WELL LOG WHICH IS A SYSTEMATIC DETAILED GEOLOGICAL RECORD OF ALL FORMATIONS, INCLUDING COAL ENCOUNTERED BY THE WELLBORE.

SIGNED:

BY:

Dundrea Smith

DATE:

NOV 14 2003

MCDOWELL 1543

GeoMet Operating Company, Inc.
Perforation and Frac Volume Specification

Well Name Pond Creek 007

PBTD 1858

Zone and Perforation Table

Frac			Ball Out	Bridge Plug Set @	Est Sand Weight	Actual Sand Weight
	Stage 1 Interval					
	1461	1464				
N2 Scf	193,000		No Plug		20,000	3,000
Acid	200					
Gel Volume	5,800					
ISIP	3,415					
ATP	3,950					
AIR	1200	BPM				
Stage 2 Interval	1,269	1272		//		20,000
N2 Scf	285,000		1240'			
Acid	250					
Gel Volume	9,200					
ISIP	1,173					
ATP	2,568					
AIR	26	BPM				
Stage 3 Interval	1,181	1184		//		25,000
N2 Scf	277,000		36 Balls On Plug @ 1170'			
Acid	250					
Gel Volume	8,000					
ISIP	963					
ATP	2,210					
AIR	30	BPM				
Stage 4 Interval	1,070	1072		//		40,000
N2 Scf	395,000		1095' -1097 11224' -1126 Ball Out 36 Balls On Plug @ 1050'			
Acid	500					
Gel Volume	12,000					
ISIP	832					
ATP	2,488					
AIR	32	BPM				
Stage 5 Interval	884	886		//		30,000
N2 Scf	331,000		902' -904' Ball Out 850'			
Acid	500					
Gel Volume	10,200					
ISIP	1,006					
ATP	2,384					
AIR	32	BPM				

Well Name Pond Creek 007

PBTD

1858

Zone and Perforation Table

	794	797	Ball Out	Bridge Plug Set @	Est Sand Weight	Actual Sand Weight
Stage 6 Interval						
N2 Scf	161,000		No Plug		25,000	27,000
Acid	250	15%				
Gel Volume	6,200					
ISIP	788					
ATP	1,559					
AIR	25	BPM				
Stage 7 Interval						
N2 Scf						
Acid						
Gel Volume						
ISIP						
ATP						
AIR		BPM				
Stage 8 Interval						
N2 Scf						
Acid						
Gel Volume						
ISIP						
ATP						
AIR		BPM				
Stage 9 Interval						
N2 Scf						
Acid						
Gel Volume						
ISIP						
ATP						
AIR		BPM				
Stage 10 Interval						
N2 Scf						
Acid						
Gel Volume						
ISIP						
ATP						
AIR						

DRILL DATA HOLE - NOAH HORN WELL DRILLING, INC

COMPANY : GEOMET OPERATING CO HOLE: GPPC-007
LOCATION: BUG HURLEY HOLLOW DRILL: RIG # 94
DATE STRATED: 08-14-2003 DATE COMPLETED: 08-18-2003
ELECTRIC LOGGED: YES GROUTED: YES

DEPTH		THICKNESS	STRATA	REMARKS
FROM	TO	FT.	DESCRIPTION	VOIDS, ETC
0	5	5	OVERBURDEN	
5	30	25	SANDSTONE	19.75' W/ 13 3/8" CASING
30	61	31	SANDSTONE	
61	92	31	SANDSTONE / SANDY SHALE STR /	SANDSTONE
92	123	31	SANDSTONE	
123	154	31	SANDSTONE / COAL STR / SANDSTONE	
154	185	31	SANDSTONE	
185	215	30	SANDY SHALE / COAL 2 / SANDSTONE	
215	245	30	SANDSTONE / SANDY SHALE	
245	275	30	SANDSTONE	
275	305	30	SANDSTONE / COAL / SANDY SHALE	
305	335	30	SANDY SHALE / COAL / SANDSTONE	
335	365	30	SANDSTONE / SANDY SHALE	
365	375	10	SANDY SHALE	367' W/ 8 5/8" CASING
375	390	15	SANDY SHALE / COAL STR	
390	420	30	COAL STR / SANDY SHALE / SANDSTONE	
420	450	30	SANDSTONE / COAL STR / SANDY SHALE STR	
450	510	60	SANDSTONE	
510	537	27	SANDY SHALE / SHALE	
537	540	3	COAL	
540	570	30	SHALE / SANDSTONE STR	
570	600	30	SANDY SHALE / SHALE STR	
600	630	30	SANDY SHALE	
630	656	26	SANDY SHALE	
656	660	4	COAL	
660	690	30	SANDSTONE / SHALE STR	
690	720	30	SANDSTONE / SANDY SHALE	
720	750	30	SANDY SHALE / SANDSTONE STR	
750	780	30	SANDSTONE / SANDY SHALE	
780	785	5	SANDY SHALE / SANDSTONE	
785	788	3	COAL	
788	810	22	SANDY SHALE / SANDSTONE	
810	840	30	COAL STR / SANDSTONE / SANDY SHALE	
840	870	30	SANDY SHALE	
870	890	20	SANDSTONE / SANDY SHALE / SANDSTONE	
890	893	3	COAL	
893	900	7	SANDSTONE / SANDY SHALE / SANDSTONE	
900	930	30	SAND / SANDY SHALE STR	
930	960	30	SAND STR / SANDY SHALE	
960	990	30	SANDY SHALE	

PAGE 2
 GEOMET OPERATING COMPANY
 GPPC-007

FROM	TO	FT.	DESCRIPTION
990	1020	30	SANDSTONE / SANDY SHALE
1020	1050	30	SANDY SHALE / SANDSTONE / SANDY SHALE
1050	1060	10	SANDY SHALE / SANDSTONE
1060	1062	2	COAL
1062	1110	48	SANDY SHALE / SANDSTONE
1110	1140	30	SANDY SHALE / COAL STR / SANDY SHALE
1140	1170	30	SAND / SANDY SHALE
1170	1185	15	SANDY SHALE
1185	1200	15	SANDY SHALE / POSS. COAL STR
1200	1230	30	SANDSTONE
1230	1260	30	SANDY SHALE/POSS Coal STR/ SANDSTONE
1260	1290	30	COAL 3-5' / SANDY SHALE / SANDSTONE STR
1290	1320	30	SANDSTONE / SANDY SHALE
1320	1350	30	SANDY SHALE / COAL
1350	1380	30	SANDY SHALE
1380	1410	30	SANDY SHALE / SANDSTONE
1410	1440	30	SANDSTONE/POSS COAL STR/SANDY SHALE
1440	1470	30	SANDSTONE STR / COAL / SANDY SHALE / COAL / SANDSTONE
1470	1590	120	SANDSTONE
1590	1620	30	SANDSTONE / SANDY SHALE
1620	1635	15	SANDY SHALE TD 7 7/8" HOLE 1628.39' W/ 4 1/2" CASING

1635.00 FT TOTAL DEPTH
 19.75 FT. OF 13 3/8" CASING
 367.00 FT. OF 8 5/8" CASING
 1628.39 FT. OF 4 1/2" CASING

NOV 14 2003

M. Dow 1543