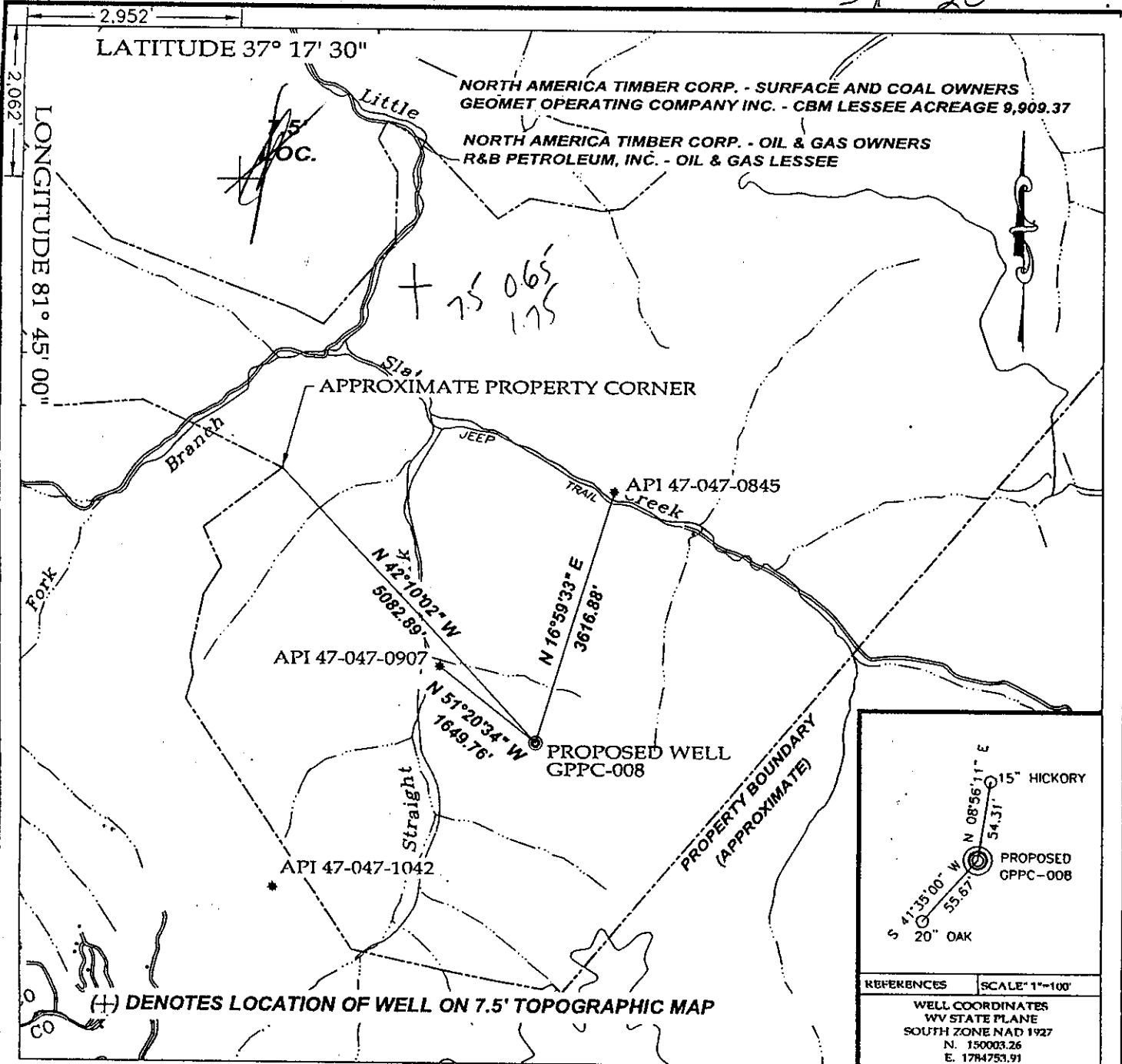
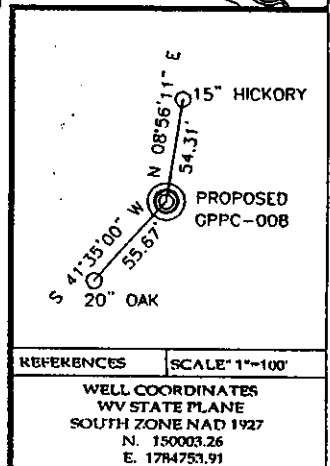


39 20



84230



TEE Engineering Company, Inc.
320 Cutlers Hill Court
Lexington, KY 40519
(859) 263-5350
Fax (859) 263-5345

P.O. Box 219
Stanville, KY 41659
(606) 478-9024
Fax (606) 478-9019

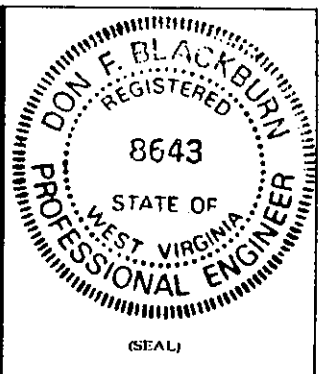
GeoMet Operating Company, Inc.
Well No. GPPC-008

FILE NO. 1883-10
DRAWING NO. GPPC-008 PLAT
SCALE: 1" = 2,000'
MIN. DEGREE OF ACCURACY 1 : 2,500
PROVEN SOURCE OF ELEVATION
GPS STATION TEC-1 (ELEV. 2406.60)

I, THE UNDERSIGNED, HEREBY CERTIFY THAT THIS PLAT IS CORRECT TO THE BEST OF MY KNOWLEDGE AND BELIEF AND SHOWS ALL THE INFORMATION REQUIRED BY LAW AND THE REGULATIONS ISSUED AND PRESCRIBED BY THE DEPARTMENT OF MINES.

Don F. Blackburn
(SIGNATURE)

R.P.E. 84-3 R.P.S.



STATE OF WEST VIRGINIA
DEPARTMENT OF ENVIRONMENTAL PROTECTION
OFFICE OF OIL AND GAS

DATE JUNE 28, 2001
OPERATOR'S WELL NO. GPPC-008
API WELL NO. 47 - 047 - 015440
STATE COUNTY PERMIT

WELL TYPE: OIL GAS CBM LIQUID INJECTION WASTE DISPOSAL
(IF "GAS") PRODUCTION STORAGE DEEP SHALLOW

LOCATION: ELEVATION 2,127.78' WATER SITED STRAIGHT FORK OF LITTLE SLATE CREEK
DISTRICT BIG CREEK COUNTY McDOWELL
QUADRANGLE WAR

SURFACE OWNER NORTH AMERICA TIMBER CORP. ACREAGE 9,909.37
CBM ROYALTY OWNER NORTH AMERICA TIMBER CORP. LEASE ACREAGE 9,909.37
LEASE NO. RECORDING IN PROGRESS

PROPOSED WORK: DRILL CONVERT DRILL DEEPER REDRILL FRACTURE OR
STIMULATE PLUG OFF OLD FORMATION PERFORATE NEW
FORMATION OTHER PHYSICAL CHANGE IN WELL (SPECIFY) _____

PLUG AND ABANDON CLEAN OUT AND REPLUG

TARGET FORMATION NEW RIVER AND POCAHONTAS COALS ESTIMATED DEPTH 2,078'
WELL OPERATOR GEOMET OPERATING COMPANY, INC. DESIGNATED AGENT BRETT CAMP
ADDRESS 1826 3RD AVE. NORTH SUITE 301 ADDRESS 1826 3RD AVE. NORTH SUITE 301
BESSEMER, ALABAMA 35020 BESSEMER, ALABAMA 35020

AUG 24 2001

M-Dow 1544C

(Bradshaw 270)

State of West Virginia
Department of Environmental Protection
Office of Oil and Gas

MB

Well Operator's Report of Well Work

FARM NAME: North America Timber

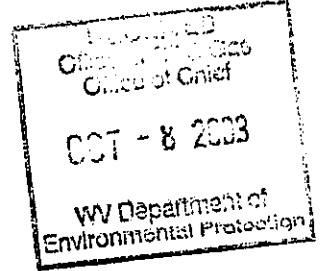
OPERATOR WELL NO.: GPPC-008

LOCATION:

Elevation: 2,127.78'

Quadrangle: WAR

District: Big Creek County: McDowell
Latitude: 2,952' Feet South of 37 Deg. 17 Min. 30 Sec.
Longitude: 2,062' Feet West of 81 Deg. 45 Min. 00 Sec.



Company: <u>GeoMet Operating Company</u>	Casing & Tubing	Used in Drilling	Left in Well	Cement fill up Cu. Ft.
Address: 5336 Stadium Trace Parkway, Suite 206 Birmingham, Alabama 35244	13-3/8"	27'	27'	
Agent: <u>Gregg Cleary</u>				
Inspector: <u>Ronnie Scott</u>	8-5/8"	331'	331'	75/Pumped 180
Date Permit Issued: <u>August 21, 2002</u>				
Date Well Work Commenced: <u>August 7, 2002</u>	5-1/2"	1814'	1814'	315/Pumped 338
Date Well Work Completed: <u>August 20, 2002</u>				
Verbal Plugging:				
Date Permission granted on:				
Rotary <u>XXXX</u> Cable Rig				
Total Depth (feet): <u>1828'</u>				
Fresh Water Depth (feet): <u>Unknown</u>				
Salt Water Depth (feet): <u>Unknown</u>				
Is coal being mined in area (N/Y)? <u>No</u>				

Coal Depths (feet): 334, 335, 339, 341, 343, 345, 346, 347, 348, 349, 350, 351, 352, 353, 355, 356, 357, 359, 384, 533, 665, 780, 785, 787, 792, 927, 928, 929, 945, 978, 981, 986, 1029, 1091, 1192, 1221, 1222, 1253, 1311, 1323, 1397, 1473, 1513, 1589, 1598, 1821, 1822, 1823.

OPEN FLOW DATA

Producing formation All Zones Commingled Pay zone depth (ft) _____
Gas: Initial Open Flow N/A MCF/d Oil: Initial Open Flow _____ Bbl/d
Final Open Flow N/A MCF/d Final Open Flow _____ Bbl/d
Time of Open Flow between initial and final tests N/A Hours
Static Rock Pressure 14 psig (surface pressure) after 96 Hours

NOTE: ON BACK OF THIS FORM PUT THE FOLLOWING: 1). DETAILS OF PERFORATED INTERVALS, FRACTURING OR STIMULATING, PHYSICAL CHANGE, ETC. 2). THE WELL LOG WHICH IS A SYSTEMATIC DETAILED GEOLOGICAL RECORD OF ALL FORMATIONS, INCLUDING COAL ENCOUNTERED BY THE WELLBORE.

SIGNED:

BY:

Quindia Smith

DATE:

NOV 14 2003

Mc Dow 1544

**GeoMet Operating Company, Inc.
Perforation and Frac Volume Specification**

Well Name Pond Creek 008 PBTB 1814

Zone and Perforation Table

Frac Stage 1 Interval			Ball Out	Bridge Plug Set @	Est Sand Weight	Actual Sand Weight
	1587	1590				
N2 Scf	349,000		1595' -1598'	1450'	25,000	26,000
Acid	200					
Gel Volume	9,400					
ISIP	2,634					
ATP	3,310					
AIR	25	BPM				
Stage 2 Interval	1,395	1389				
N2 Scf	288,000		54 Frac Balls On Plug @ 1360'			
Acid	200					
Gel Volume	8,700					
ISIP	1,157					
ATP	2,483					
AIR	28	BPM				
Stage 3 Interval	1,310	1313				30,000
N2 Scf			1321' -1324' Would Not Treat			
Acid	250					
Gel Volume						
ISIP						
ATP						
AIR		BPM				
Stage 4 Interval	1,191	1194				50,000
N2 Scf	390,000		1220' -1223' 1251' -1254' Dropped Frac Balls Ball Out 1110'			
Acid	250					
Gel Volume	13,800					
ISIP	1,090					
ATP	2,335					
AIR	38	BPM				
Stage 5 Interval	1,028	1030				20,000
N2 Scf	162,000		1010'			
Acid	250					
Gel Volume	6,400					
ISIP	929					
ATP	1,775					
AIR	24	BPM				

Well Name Pond Creek 008

PBTD

1814

Zone and Perforation Table

	978	981	Ball Out	Bridge Plug Set @	Est Sand Weight	Actual Sand Weight
Stage 6 Interval						
N2 Scf	198,000		950'		30,000	31,000
Acid	250					
Gel Volume	8,000					
ISIP	1,024					
ATP	1,755					
AIR	28	BPM				
Stage 7 Interval	9,263	930				
N2 Scf	228,000		No Plug			
Acid	250					
Gel Volume	7,600					
ISIP	1,936					
ATP	2,220					
AIR	25	BPM				
Stage 8 Interval						
N2 Scf						
Acid						
Gel Volume						
ISIP						
ATP						
AIR		BPM				
Stage 9 Interval						
N2 Scf						
Acid						
Gel Volume						
ISIP						
ATP						
AIR		BPM				
Stage 10 Interval						
N2 Scf						
Acid						
Gel Volume						
ISIP						
ATP						
AIR						

14 2008

McDermott 1544

DRILL DATA HOLE - NOAH HORN WELL DRILLING, INC.

COMPANY: GEO-MET

HOLE NO. GPPC-008

LOCATION: BUG HURLEY

DRILL: RIG 94

DATE STARTED: 08-06-03

ELECTRIC LOGGED: YES

DATE COMPLETED: 08-11-03

GROUTED: YES

DEPTH		THICKNESS	STRATA	REMARKS
FROM	TO	FT.	DESCRIPTION	VOIDS, ETC
0	5	5	OVERBURDEN	
5	27	22	SOFT SAND/SANDSTONE	27.15' OF 13-3/8" CASING
27	30	3	SANDSTONE	
30	61	31	SANDSTONE	
61	92	31	SANDSTONE/SANDY SHALE	
92	123	31	SANDY SHALE/SANDSTONE	
123	154	31	SANDY SHALE/COAL STRKS/SANDSTONE	
154	185	31	SANDSTONE	
185	215	30	SANDSTONE	
215	245	30	SAND/COAL STRSK/SANDSTONE	
245	275	30	SANDSTONE/SANDY SHALE	
275	305	30	SANDY SHALE	
305	335	30	SANDY SHALE/SANDSTONE	331' OF 8-5/8"
335	340	5		
340	360	20	SANDY SHALE	
360	390	30	SANDY SHALE/COAL STRKS.	
390	420	30	SANDY SHALE/SANDSTONE	
420	450	30	SANDSTONE	
450	480	30	SANDSTONE/SANDY SHALE STRKS.	
480	510	30	SANDSTONE/SANDY SHALE/POSS. COAL	
510	540	30	SANDY SHALE/COAL-525-528/SANDSTONE	
540	570	30	SANDSTONE/SANDY SHALE	
570	600	30	SANDY SHALE/SANDSTONE	
600	630	30	SANDSTONE/SANDY SHALE	
630	660	30	SANDY SHALE/COAL - 659'	
660	690	30	COAL-660-661'/SANDY SHALE/COAL STRKS	
690	750	60	SANDY SHALE	
750	810	60	SANDY SHALE/COAL	
810	840	30	SANDSTONE	
840	870	30	SANDSTONE/SHALE STRKS/COAL STRKS.	
870	900	30	SANDSTONE/SHALE STRKS.	
900	930	30	SANDSTONE/SANDY SHALE/COAL-915-919	
930	960	30	SANDY SHALE/COAL-935-938/SHALE STRK	
960	990	30	SANDSTONE/SANDY SHALE	
990	1020	30	SANDY SHALE/COAL STRKS/SANDY SH.	

GEO-MET OPERATIONS
HOLE #GPPC-008
PAGE 2

1020	1050	30	COAL-3'/SANDY SHALE/SANDSTONE
1050	1080	30	SANDSTONE/SANDY SHALE/COAL STRKS
1080	1110	30	SAND/SANDY SHALE
1110	1140	30	SANDY SHALE/SANDSTONE
1140	1170	30	SANDSTONE
1170	1200	30	SANDSTONE/SANDY SHALE
1200	1230	30	SANDSTONE
1230	1260	30	SANDSTONE/SANDY SHALE COAL STRKS/ SANDSTONE
1260	1320	60	SANDSTONE
1320	1350	30	SANDSTONE/COAL STRKS/SANDY SHALE
1350	1380	30	SANDSTONE/SANDY SHALE
1380	1410	30	SANDY SHALE/SANDSTONE
1410	1440	30	SANDSTONE/COAL STRKS/SANDSTONE
1440	1470	30	SANDSTONE/SANDY SHALE
1470	1500	30	SANDY SHALE/COAL STRKS/SANDSTONE
1500	1530	30	SANDSTONE/SANDY SHALE
1530	1560	30	SANDSTONE
1560	1590	30	SANDSTONE/SANDY SHALE
1590	1620	30	SANDSTONE
1620	1650	30	SANDSTONE/SANDY SHALE
1650	1680	30	SANDSTONE/SANDY SHALE
1680	1710	30	SANDY SHALE/SANDSTONE STRKS/COAL
1710	1740	30	SANDY SHALE/SANDSTONE
1740	1770	30	SANDSTONE/SANDY SHALE STRKS.
1770	1800	30	RED SHALE-10-15'/SANDSTONE
1800	1830	30	RED SHALE-20'/SANDSTONE
1830	1850	20	SANDSTONE/SHALE 1814' OF 5-1/2" CASING

TOTAL DEPTH: 1850'
27.15' OF 13-3/8" CASING
331' OF 8-5/8" CASING
1814' OF 5-1/2" CASING

NOV 14 2003

M^c Dow 1544