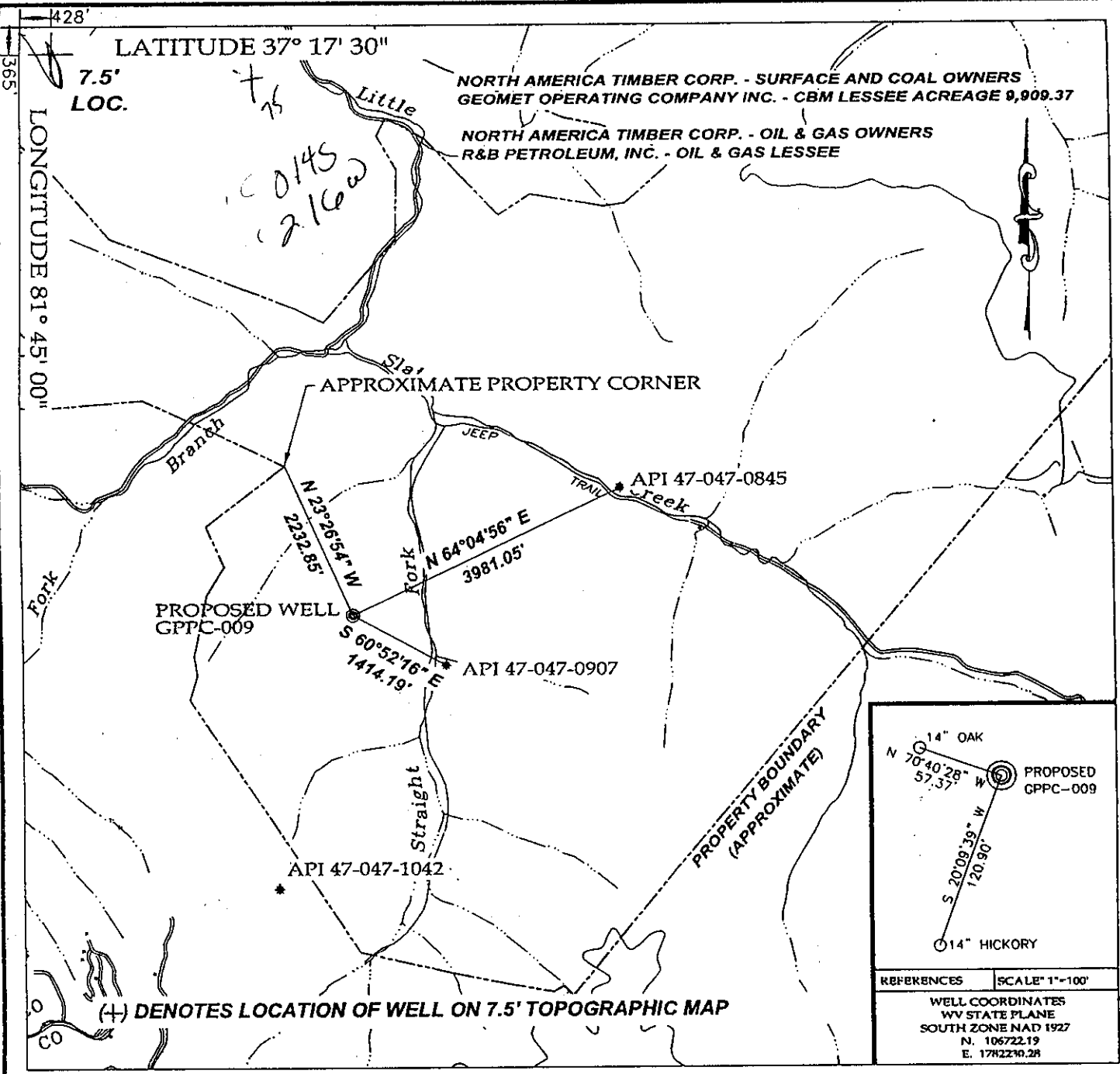
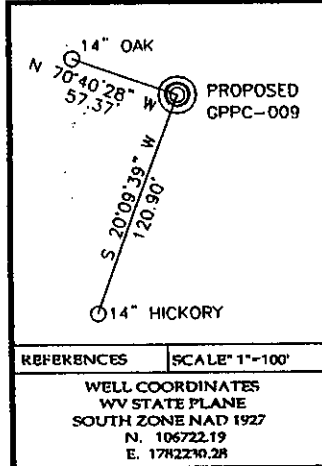


371730



81 4230

(+) DENOTES LOCATION OF WELL ON 7.5' TOPOGRAPHIC MAP



**TEE Engineering Company, Inc.**  
320 Quers Hill Court  
Lexington, KY 40519  
(859) 263-5350  
Fax (859) 263-5345

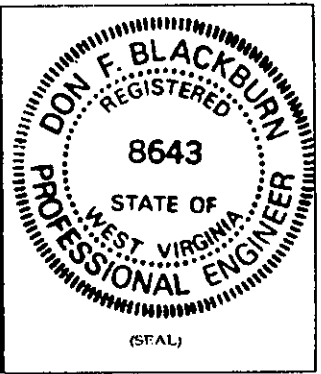
**GeoMet Operating Company, Inc.**  
Well No. GPPC-009

FILE NO. 1883-10  
DRAWING NO. GPPC-009 PLAT  
SCALE: 1" = 2,000'  
MIN. DEGREE OF ACCURACY 1 : 2,500  
PROVEN SOURCE OF ELEVATION  
GPS STATION TEC-1 (ELEV. 2406.60)

I, THE UNDERSIGNED, HEREBY CERTIFY THAT THIS PLAT IS CORRECT TO THE BEST OF MY KNOWLEDGE AND BELIEF AND SHOWS ALL THE INFORMATION REQUIRED BY LAW AND THE REGULATIONS ISSUED AND PRESCRIBED BY THE DEPARTMENT OF MINES.

*Don F. Blackburn*  
(SIGNATURE)

R.P.E. 8643 R.P.S. \_\_\_\_\_



**STATE OF WEST VIRGINIA**  
DEPARTMENT OF ENVIRONMENTAL PROTECTION  
**OFFICE OF OIL AND GAS**

DATE JUNE 28, 2001  
OPERATOR'S WELL NO. GPPC-009  
API WELL NO. 47 - 047 - 01545C  
STATE COUNTY PERMIT

WELL TYPE: OIL \_\_\_\_\_ GAS  CBM LIQUID INJECTION \_\_\_\_\_ WASTE DISPOSAL \_\_\_\_\_  
(IF "GAS") PRODUCTION  STORAGE DEEP \_\_\_\_\_ SHALLOW \_\_\_\_\_

LOCATION: ELEVATION 2,078.17' WATERSHED STRAIGHT FORK OF LITTLE SLATE CREEK  
DISTRICT BIG CREEK COUNTY McDOWELL  
QUADRANGLE WAR

SURFACE OWNER NORTH AMERICA TIMBER CORP. ACREAGE 9,909.37  
CBM ROYALTY OWNER NORTH AMERICA TIMBER CORP. LEASE ACREAGE 9,909.37  
LEASE NO. RECORDING IN PROGRESS

PROPOSED WORK: DRILL  CONVERT \_\_\_\_\_ DRILL DEEPER \_\_\_\_\_ REDRILL \_\_\_\_\_ FRACTURE OR  
STIMULATE \_\_\_\_\_ PLUG OFF OLD FORMATION \_\_\_\_\_ PEFORATE NEW  
FORMATION \_\_\_\_\_ OTHER PHYSICAL CHANGE IN WELL (SPECIFY) \_\_\_\_\_

PLUG AND ABANDON \_\_\_\_\_ CLEAN OUT AND REPLUG \_\_\_\_\_

TARGET FORMATION NEW RIVER AND POCAHONTAS COALS ESTIMATED DEPTH 2,046'  
WELL OPERATOR GEOMET OPERATING COMPANY, INC. DESIGNATED AGENT BRETT CAMP  
ADDRESS 1826 3RD AVE. NORTH SUITE 301 ADDRESS 1826 3RD AVE. NORTH SUITE 301  
BESSEMER, ALABAMA 35020 BESSEMER, ALABAMA 35020

McDow 1545C

(Bendshaw 270)

AUG 24 2001

State of West Virginia  
Department of Environmental Protection  
Office of Oil and Gas

8993

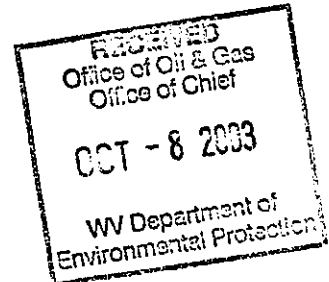
Well Operator's Report of Well Work

FARM NAME: North America Timber OPERATOR WELL NO.: GPPC-009

LOCATION:

Elevation: 2,078.17' Quadrangle: WAR

District: Big Creek County: McDowell  
Latitude: 428' Feet South of 37 Deg. 17 Min. 30 Sec.  
Longitude: 365' Feet West of 81 Deg. 45 Min. 00 Sec.



Company: <u>GeoMet Operating Company</u>	Casing & Tubing	Used in Drilling	Left in Well	Cement fill up Cu. Ft.
Address: <u>5336 Stadium Trace Parkway, Suite 206 Birmingham, Alabama 35244</u>	<u>13-3/8"</u>	<u>22'</u>	<u>22'</u>	
Agent: <u>Gregg Cleary</u>				
Inspector: <u>Ronnie Scott</u>	<u>8-5/8"</u>	<u>332'</u>	<u>332'</u>	<u>75/Pumped 180</u>
Date Permit Issued: <u>August 21, 2002</u>				
Date Well Work Commenced: <u>July 24, 2002</u>	<u>5-1/2"</u>	<u>1745'</u>	<u>1745'</u>	<u>303/Pumped 358</u>
Date Well Work Completed: <u>August 6, 2002</u>				
Verbal Plugging:				
Date Permission granted on:				
Rotary <u>XXXX</u> Cable <u>        </u> Rig <u>        </u>				
Total Depth (feet): <u>1758'</u>				
Fresh Water Depth (feet): <u>Unknown</u>				
Salt Water Depth (feet): <u>Unknown</u>				
Is coal being mined in area (N/Y)? <u>No</u>				

Coal Depths (feet): 344, 392, 453, 457, 519, 609, 647, 917, 919, 936, 964, 982, 1006, 1041, 1073, 1074, 1093, 1197, 1225, 1258, 1259, 1307, 1341, 1389, 1468, 1581, 1606.

OPEN FLOW DATA

Producing formation All Zones Commingled Pay zone depth (ft) \_\_\_\_\_  
Gas: Initial Open Flow N/A MCF/d Oil: Initial Open Flow \_\_\_\_\_ Bbl/d  
Final Open Flow N/A MCF/d Final Open Flow \_\_\_\_\_ Bbl/d  
Time of Open Flow between initial and final tests N/A Hours  
Static Rock Pressure 13 psig (surface pressure) after 96 Hours

NOTE: ON BACK OF THIS FORM PUT THE FOLLOWING: 1). DETAILS OF PERFORATED INTERVALS, FRACTURING OR STIMULATING, PHYSICAL CHANGE, ETC. 2). THE WELL LOG WHICH IS A SYSTEMATIC DETAILED GEOLOGICAL RECORD OF ALL FORMATIONS, INCLUDING COAL ENCOUNTERED BY THE WELLBORE.

SIGNED:

BY:

DATE:

Dundrea Smith

NOV 14 2003

McDow 1545

**GeoMet Operating Company, Inc.**  
**Perforation and Frac Volume Specification**

Well Name Pond Creek 009

PBTD

1745

**Zone and Perforation Table**

Frac Stage 1 Interval			Ball Out	Bridge Plug Set @	Est Sand Weight	Actual Sand Weight
	1579	1582				
N2 Scf	214,000		No Plug		10,000	9,100
Acid	200	15%				
Gel Volume	7,400					
ISIP	Screen Out					
ATP	3,655					
AIR	20	BPM				
Stage 2 Interval	1,339	1342				
N2 Scf	232,000		1388' -1391' Ball Out Tight 1330'			
Acid	300					
Gel Volume	9,000					
ISIP	2,764					
ATP	3,715					
AIR	23	BPM				
Stage 3 Interval	1,305	1308				
N2 Scf	248,000		1290'			
Acid	200					
Gel Volume	6,600					
ISIP	2,750					
ATP	3,192					
AIR	22	BPM				
Stage 4 Interval	1,257	1260				
N2 Scf	200,000		36 Balls On Plug @ 1245'			
Acid	300					
Gel Volume	6,000					
ISIP	1,536					
ATP	2,472					
AIR	21	BPM				
Stage 5 Interval	1,195	1198				
N2 Scf	355,000		1223' -1226' Ball Out 1100'			
Acid	300	15%				
Gel Volume	11,600					
ISIP	1,213					
ATP	2,608					
AIR	30	BPM				

# DRILL DATA HOLE - NOAH HORN WELL DRILLING, INC.

COMPANY: GEO-MET

HOLE NO. GPPC-009

LOCATION: BUG HURLEY HOLLOW

DRILL: RIG 94

DATE STARTED: 07-23-03

ELECTRIC LOGGED: YES

DATE COMPLETED: 07-25-03

GROUTED: YES

DEPTH		THICKNESS	STRATA	REMARKS
FROM	TO	FT.	DESCRIPTION	VOIDS, ETC
0	2	2	OVERBURDEN	
2	15	13	SOFT SANDSTONE	21.75' OF 13-3/8"
15	22	7	SANDY SHALE/SANDSTONE	
22	61	39	SANDSTONE/SANDY SHALE STRKS.	
61	92	31	SANDSTONE/SANDY SHALE	
92	123	31	SANDY SHALE/SANDSTONE/SANDY SH.	
123	154	31	SANDSTONE STRKS/SANDY SHALE	
154	185	31	SANDY SHALE/SANDSTONE	
185	215	30	SANDSTONE	
215	245	30	SANDSTONE/SANDY SHALE/SANDSTONE	
245	275	30	SANDSTONE	
275	305	30	SANDY SHALE/SANDSTONE	
305	335	30	SANDSTONE/SANDY SHALE/SANDSTONE	
335	345	10	SANDY SHALE	331' OF 8-5/8"
345	360	15	SANDY SHALE/SANDSTONE	
360	390	30	SANDSTONE	
390	420	30	SANDSTONE/SANDY SHALE	
420	450	30	SANDY SHALE/COAL -447-450'	
450	480	30	SANDSTONE STRKS/SANDY SHALE	
480	510	30	COAL/SANDY SHALE	
510	540	30	SANDSTONE	
540	570	30	SANDY SHALE/SANDSTONE STRKS.	
570	600	30	SANDY SHALE/COAL STRKS/SANDSTONE	
600	630	30	SANDSTONE/SANDY SHALE	
630	660	30	SANDY SHALE/SANDSTONE	
660	690	30	SANDSTONE/COAL STRKS/SANDY SHALE	
690	720	30	SANDY SHALE/SANDSTONE	
720	750	30	SANDSTONE/COAL STRKS/SANDY SHALE	
750	780	30	SANDY SHALE/SANDSTONE	
780	810	30	SANDSTONE/SANDY SHALE	
810	840	30	SANDY SHALE/COAL-2'/SANDSTONE	
840	870	30	SANDSTONE/SANDY SHALE	
870	900	30	SANDY SHALE/SANDSTONE	
900	930	30	SANDSTONE/COAL STRKS/SANDY SHALE	
930	960	30	SANDY SHALE/SANDSTONE	
960	990	30	SANDSTONE/SANDY SHALE	
990	1020	30	SANDY SHALE/SANDSTONE	

Well Name PMC SOUTH 009

PBTD

1745

**Zone and Perforation Table**

	Ball Out	Bridge Plug Set @	Est Sand Weight	Actual Sand Weight
Stage 6 Interval	1,040	1,043		
N2 Scf	216,000		20,000	21,000
Acid	300	15%		
Gel Volume	6,000			
ISIP				
ATP	2,888			
AIR	23	BPM		
	50 Balls On Plug @ 1010'			
Stage 7 Interval	963	965	20,000	0
N2 Scf				
Acid	450			
Gel Volume				
ISIP				
ATP				
AIR	BPM			
	981' -983 Could Not get Enough Rate To Ball Out 3.5 BPM 3700#			
Stage 8 Interval	916	920	35,000	53,000
N2 Scf	370,000			
Acid	300			
Gel Volume	12,400			
ISIP	1,384			
ATP	2,685			
AIR	31	BPM		
	No Plug			
Stage 9 Interval				
N2 Scf				
Acid				
Gel Volume				
ISIP				
ATP				
AIR	BPM			
Stage 10 Interval				
N2 Scf				
Acid				
Gel Volume				
ISIP				
ATP				
AIR				

GEO-MET OPERATIONS

HOLE #GPPC-009

Page 2

1020	1050	30	SANDSTONE/COAL/SANDSTONE
1050	1080	30	SANDSTONE/COAL/SANDY SHALE
1080	1110	30	SANDY SHALE/SANDSTONE
1110	1140	30	SANDSTONE/SANDY SHALE
1140	1170	30	SANDY SHALE/SANDSTONE
1170	1200	30	SANDSTONE/COAL/SANDY SHALE
1200	1230	30	SANDY SHALE/SANDSTONE
1230	1260	30	SANDSTONE/COAL STRKS/SANDSTONE
1260	1290	30	SANDSTONE/SANDY SHALE
1290	1320	30	COAL/SANDY SHALE
1320	1350	30	SANDY SHALE/SANDSTONE
1350	1380	30	SANDSTONE/SANDY SHALE
1380	1410	30	SANDY SHALE/COAL/ SANDSTONE
1410	1440	30	SANDSTONE/SANDY SHALE
1440	1470	30	SANDY SHALE/SANDSTONE
1470	1500	30	SANDSTONE/SANDY SHALE
1500	1530	30	SANDY SHALE/SANDSTONE
1530	1560	30	SANDSTONE/SANDY SHALE/SANDSTONE
1560	1590	30	SANDSTONE/SANDY SHALE
1590	1620	30	SANDSTONE/SAND
1620	1650	30	SANDY SHALE/SAND
1650	1680	30	SAND/SANDY SHALE STRKS.
1680	1710	30	SANDY SHALE/SANDSTONE
1710	1740	30	SANDY SHALE/SAND
1740	1750	10	SANDY SHALE T.D. 8" HOLE

TOTAL DEPTH: 1750

21.75' OF 13-3/8" CASING

331' OF 8-5/8" CASING

NOV 14 2003

McDow 154E