

WV State Plane South
 NAD 27 - US Feet
 N 129,573
 E 1,840,844

Lat. 37° 22' 30"

UTM
 N 4134350.263
 E 451525.930

Tr. 267
 DIVINE
 2000 Acres

Tr. 380
 T.K. Tolten
 98.06 Acres

Pocahontas Land Corporation - Surface and Mineral
 Penn Virginia Oil and Gas Corporation - Oil and Gas
 Applachian Forest A, LLC - Timber

Tr. 278-C
 60 Acres

Tr. 2001
 W.G.H. Jumper
 303.5 Acres

Topo Location
 Lat 37° 21' 16.8"
 Long -81° 32' 50.5"

Pocahontas Land Corporation
 26,882.97 - Surface 247/264

Tr. 273
 M.L. Murphy
 92.52 Acres

Tr. 278-B
 72.92 Acres

47-047-2024
 Poca M-92

47-047-1571
 Poca M-38

47-047-1575
 Poca M-30

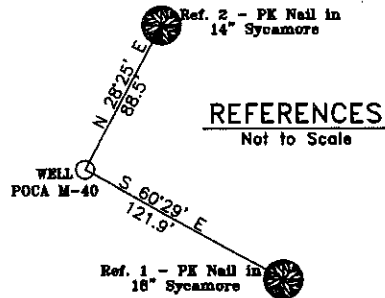
47-047-1575
 Poca M-30

47-047-1575
 Poca M-30

47-047-01046
 Poca M-96r

Tr. 279-A
 A.W. Rose
 92.18 Acres

Parcel No. 8
 815.72 Acres
 Harrison & Sayers
 3822.34 Acres



Notes:

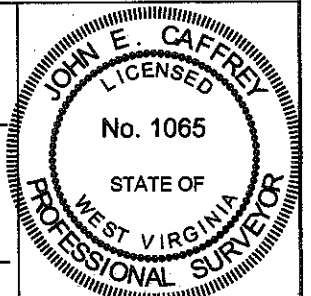
No Dwellings exist within 200 feet of Poca M-40
 No Domestic Wells within 1000' of Gas Well Poca M-40
 (+) Denotes location of well on USGS map.
 Property Information taken from McDowell Co. Tax Records
 Pocahontas Land Corporation Tract Lines ---



FILE No. CABOT OIL AND GAS
 DIRECTORY C:\CABOT2012\Poca M-40
 DRAWING NAME PlatM-40.dwg
 SCALE 1" = 1000'
 MINIMUM DEGREE OF ACCURACY 1 : 2500
 PROVEN SOURCE OF ELEVATION GPS GLOBAL POSITIONING SYSTEM (Sub meter accuracy)

I THE UNDERSIGNED, HEREBY CERTIFY THAT THIS PLAT IS CORRECT TO THE BEST OF MY KNOWLEDGE AND BELIEF AND SHOWS ALL THE INFORMATION REQUIRED BY LAW AND THE REGULATIONS ISSUED AND PRESCRIBED BY THE DEPARTMENT OF MINES.

(SIGNED) [Signature]
 R.P.S. 1065



STATE OF WEST VIRGINIA
 DEPARTMENT OF ENVIRONMENTAL PROTECTION
 OFFICE OF OIL AND GAS
 CHARLESTON, WV



DATE JUNE 01, 2012
 OPERATOR'S WELL No. POCA M-40
47 - 047 - 01585
 API WELL No. STATE COUNTY PERMIT

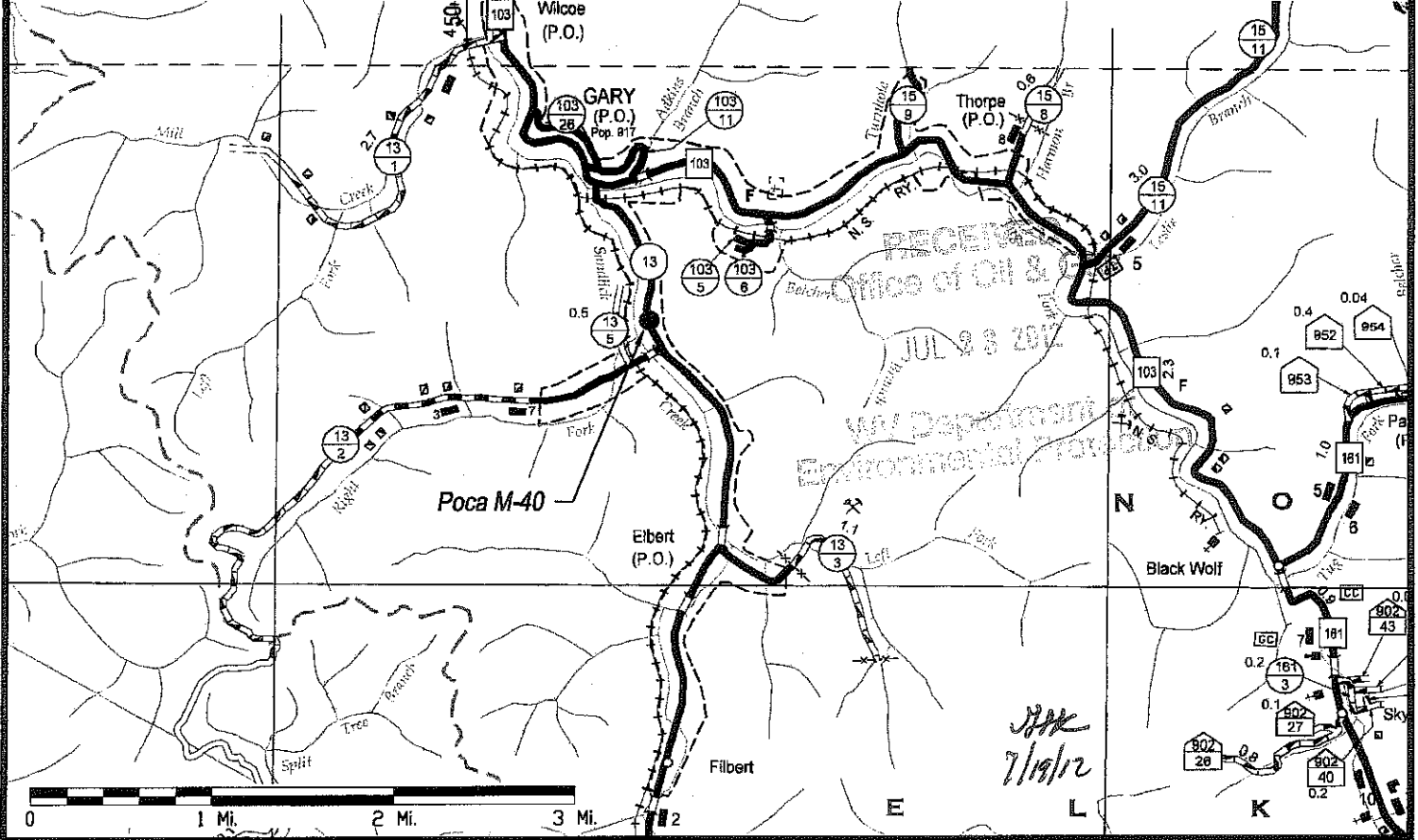
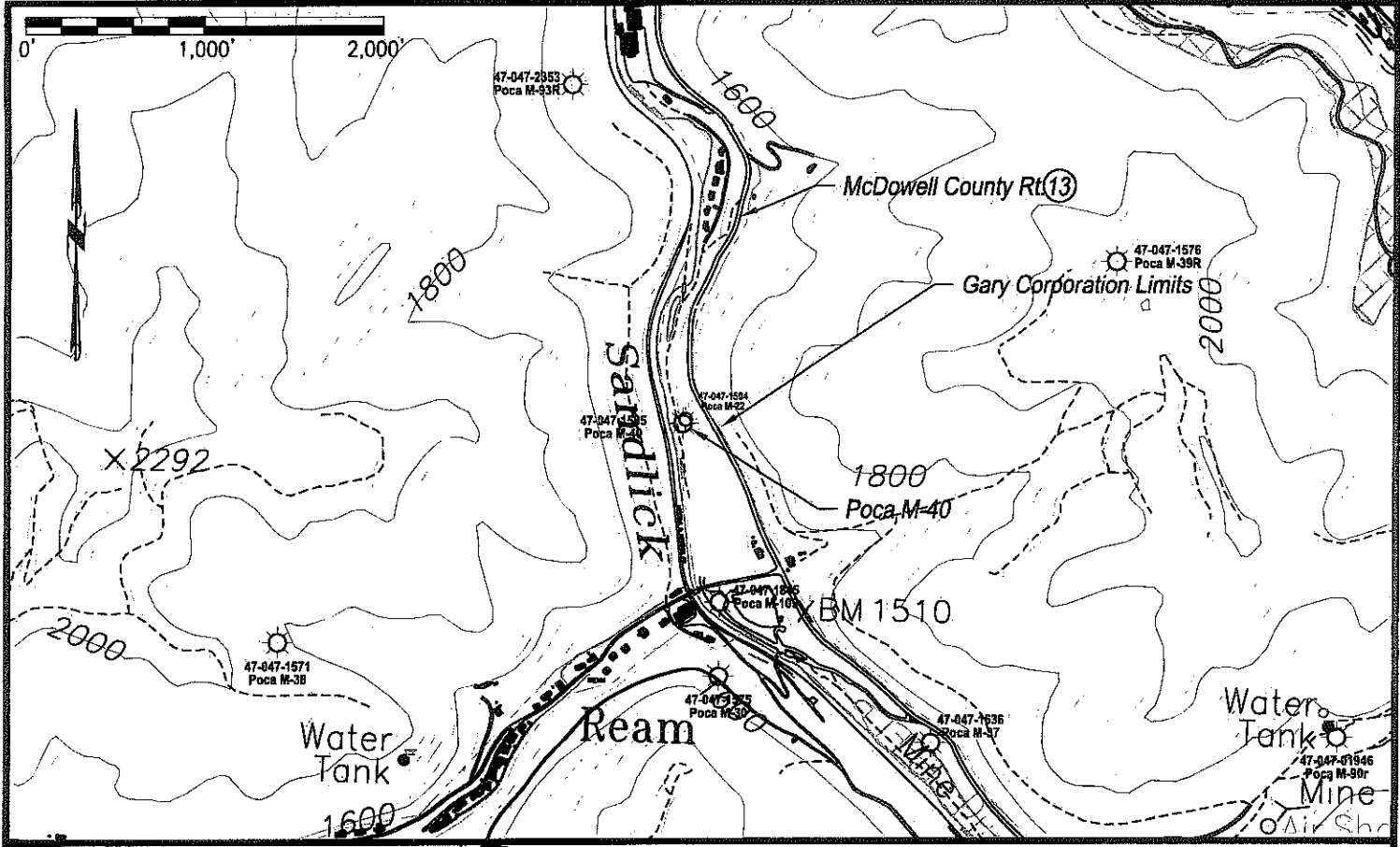
WELL TYPE: OIL GAS LIQUID INJECTION WASTE DISPOSAL
 (IF "GAS") PRODUCTION STORAGE DEEP SHALLOW
 LOCATION: ELEVATION 1444.59 WATER SHED SANDLICK CREEK OF TUG FORK OF THE BIG SANDY RIVER
 DISTRICT ADKIN COUNTY McDOWELL
 QUADRANGLE GARY, WV/VA
 SURFACE OWNER POCAHONTAS LAND CORPORATION ACREAGE 55.22 (Tax Map 8, Gary Corp, Parcel P/O 125-5)
 ROYALTY OWNER PENN VIRGINIA OIL AND GAS CORPORATION LEASE ACREAGE 47,520

PROPOSED WORK: LEASE No. 47-0507
 DRILL CONVERT DRILL DEEPER REDRILL FRACTURE OR
 STIMULATE PLUG OFF OLD FORMATION PERFORATE NEW
 FORMATION OTHER PHYSICAL CHANGE IN WELL (SPECIFY)

PLUG AND ABANDON CLEAN OUT AND REPLUG
 TARGET FORMATION Ravenc Cliff/Avis Ss ESTIMATED DEPTH 950'
 WELL OPERATOR CABOT OIL & GAS CORP. DESIGNATED AGENT BRYAN HALL
 ADDRESS FIVE PENN CENTER WEST, SUITE 401 ADDRESS PO BOX 260
PITTSBURGH, PA 15276 DANVILLE, WV 25053

07/27/2012

47-01585



Cabot Oil & Gas Corporation

Pocca M-40

Location Map - June 1, 2012
 McDowell County General Highway Map & USGS Gary Quad.
 Located in Gary, WV; Adkin District of McDowell County

JAK
 7/19/12