

4701593P

WW-7
8-30-06



West Virginia Department of Environmental Protection
Office of Oil and Gas
WELL LOCATION FORM: GPS

API: 47-047-01593 WELL NO.: WV 506499 (Kennedy 6499)

FARM NAME: Kennedy

RESPONSIBLE PARTY NAME: EQT Production Company

COUNTY: McDowell DISTRICT: Sandy River

QUADRANGLE: Bradshaw 7.5'

SURFACE OWNER: Earl W. & Peggy Ratliff

ROYALTY OWNER: Paul & Ruby Kennedy, et al.

UTM GPS NORTHING: 4132764

UTM GPS EASTING: 424558 GPS ELEVATION: 656 m (2154 ft)

The Responsible Party named above has chosen to submit GPS coordinates in lieu of preparing a new well location plat for a plugging permit or assigned API number on the above well. The Office of Oil and Gas will not accept GPS coordinates that do not meet the following requirements:

- Datum: NAD 1983, Zone: 17 North, Coordinate Units: meters, Altitude: height above mean sea level (MSL) – meters.
- Accuracy to Datum – 3.05 meters
- Data Collection Method:

Survey grade GPS : Post Processed Differential
Real-Time Differential

Mapping Grade GPS X: Post Processed Differential X
Real-Time Differential

- Letter size copy of the topography map showing the well location.**

I the undersigned, hereby certify this data is correct to the best of my knowledge, belief and shows all the information required by law and the regulations issued and prescribed by the Office of Oil and Gas.

Signature *Stacy O'Keefe*
Date 12/9/13

Title PS # 2180

RECEIVED
Office of Oil & Gas

DEC 19 2013

WV Department of
Environmental Protection

4701593P

Topo Quad: Bradshaw 7.5'

Scale: 1" = 2000'

County: McDowell

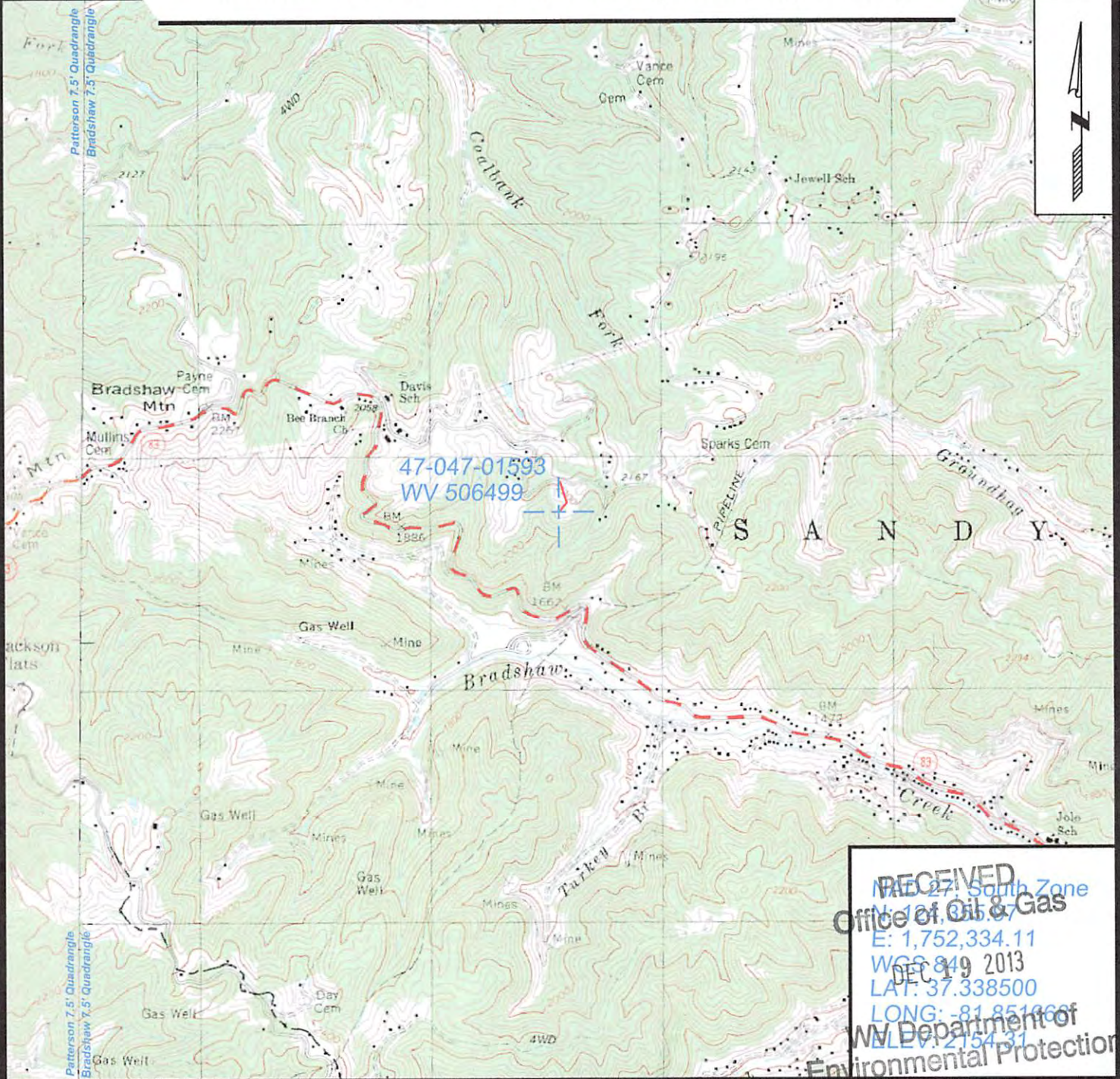
Date: December 4, 2013

District: Sandy River

Project No: 20-37-00-08

47-047-01593 WV 506499 (Kennedy 6499)

Topo



RECEIVED
 DEC 19 2013
 Office of Oil & Gas
 E: 1,752,334.11
 WGS 84
 LAT: 37.338500
 LONG: -81.851866
 WV Department of
 Environmental Protection



SURVEYING AND MAPPING SERVICES PERFORMED BY:
ALLEGHENY SURVEYS, INC.
 1-800-482-8606
 P.O. BOX 438
 BIRCH RIVER, WV 26610
 PH: (304) 649-8606
 FAX: (304) 649-8608

PREPARED FOR:
EQT Production Company
 P.O. Box 280
 Bridgeport, WV 26330