

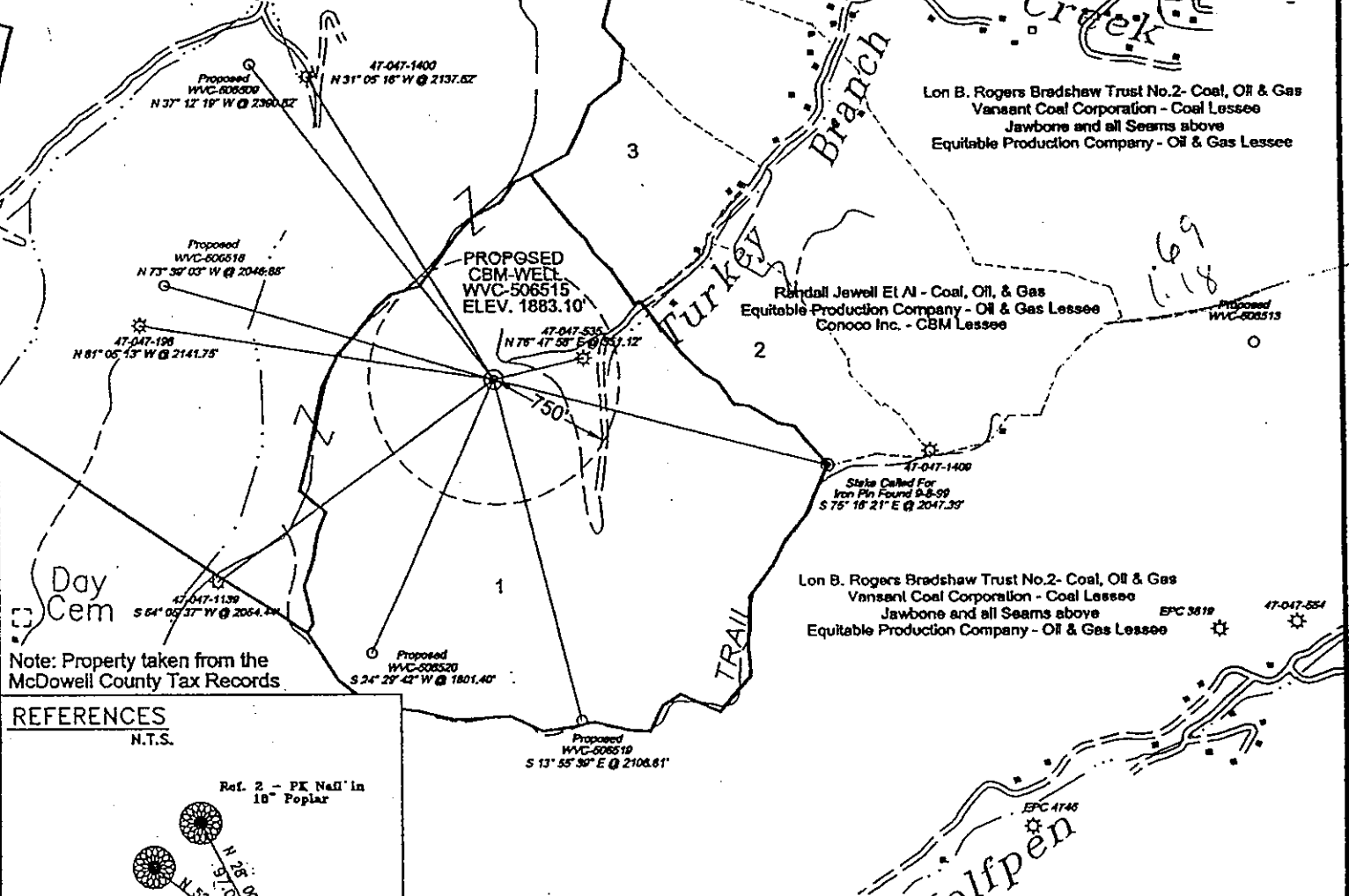
STATE PLANE COORDINATES

(NAD 27 Datum)  
 N 118,851.48076  
 E 1,751,501.82221  
 Latitude 37.32325104  
 Longitude 81.85451657

6,225'  
 LATITUDE 37° 20' 00"

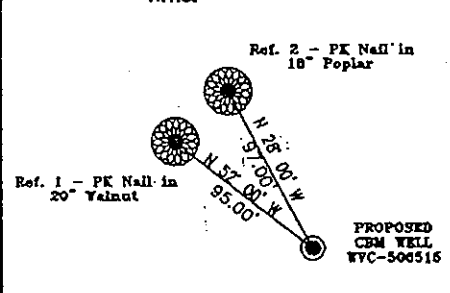
LONGITUDE 81° 50' 00"

Clark & Paul Kennedy - Surface, Coal, Oil & Gas  
 Norine Kennedy Harman & Anise Jones - Surface, Coal, Oil & Gas  
 Equitable Production Company - Oil & Gas Lessee  
 Equitable Production Company - CBM Lessee  
 Eastern Energy Company - Coal Lessee



Note: Property taken from the McDowell County Tax Records

REFERENCES



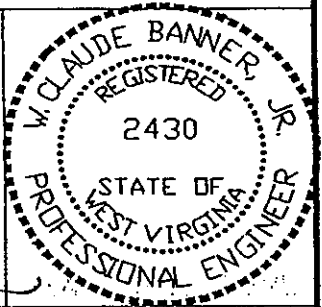
Clark & Paul Kennedy, Norine Harman & Anise Jones  
 Surface, Coal, Oil & Gas  
 Equitable Production Company - Oil & Gas Lessee  
 Equitable Production Company - CBM Lessee  
 Eastern Energy Company - Coal Lessee

Adjacent Property Owners  
 1. Clark & Paul Kennedy  
 2. C & E Hopkins, Et Al  
 3. C & E Hopkins, Et Al

FILE No. 8-28-01-1KF  
 DRAWING NAME \506515\WVC-506515  
 SCALE 1" = 1000'  
 MINIMUM DEGREE OF ACCURACY 1 : 2500  
 PROVEN SOURCE OF ELEVATION Global Positioning System (GPS)

I THE UNDERSIGNED, HEREBY CERTIFY THAT THIS PLAT IS CORRECT TO THE BEST OF MY KNOWLEDGE AND BELIEF AND SHOWS ALL THE INFORMATION REQUIRED BY LAW AND THE REGULATIONS ISSUED AND PRESCRIBED BY THE DEPARTMENT OF MINES.

(SIGNED) Claude Banner  
 R.P.E. 2430 R.P.S.



STATE OF WEST VIRGINIA  
 DIVISION OF ENVIRONMENTAL PROTECTION  
 OFFICE OF OIL AND GAS  
 NITRO, WV

DATE OCTOBER 16 2001  
 OPERATOR'S WELL No. WVC-506515  
 API WELL No. 47 - 047 - 01599C  
 STATE COUNTY PERMIT

WELL TYPE: OIL GAS CBM LIQUID INJECTION WASTE DISPOSAL  
 (IF "GAS") PRODUCTION X STORAGE DEEP SHALLOW  
 LOCATION: ELEVATION 1883.10 WATER SHED TURKEY BRANCH OF BRADSHAW CREEK OF DRY FORK  
 DISTRICT SANDY RIVER COUNTY McDOWELL  
 QUADRANGLE BRADSHAW, WV  
 SURFACE OWNER CLARK, PAUL KENNEDY, NORINE HARMAN, ANISE JONES ACREAGE ± 160.16 TAX MAP 323 Parcel 41  
 CBM ROYALTY OWNER CLARK, PAUL KENNEDY, NORINE HARMAN, ANISE JONES LEASE ACREAGE 1011.01  
 LEASE No. 497885L

PROPOSED WORK: DRILL X CONVERT DRILL DEEPER REDRILL FRACTURE OR  
 STIMULATE X PLUG OFF OLD FORMATION PERFORATE NEW  
 FORMATION OTHER PHYSICAL CHANGE IN WELL (SPECIFY)  
 PLUG AND ABANDON CLEAN OUT AND REPLUG  
 TARGET FORMATION PENNSYLVANIAN COALS ESTIMATED DEPTH  
 WELL OPERATOR EQUITABLE PRODUCTION COMPANY DESIGNATED AGENT STEPHEN PERDUE  
 ADDRESS 1710 PENNSYLVANIA AVENUE ADDRESS 1710 PENNSYLVANIA AVE.  
CHARLESTON, WV 25328 CHARLESTON, WV 25328

MCDOWELL 1599C

GS

State of West Virginia  
Division of Environmental Protection  
Section of Oil and Gas

Well Operator's Report of Well Work

Farm Name: Kennedy, Clark & Paul

Operator Well No.: 506515

LOCATION: Elevation: 1883.1'

Quadrangle: Bradshaw

District: Sandy River

County: McDowell

Latitude: 3650 Feet South of  
Longitude: 6225 Feet West of

Minutes Seconds  
37 Deg. 20 0  
81 Deg. 50 0

Company: Equitable Production Company  
P.O. Box 2347, 1710 Pennsylvania Avenue  
Charleston, WV 25328

Agent: Stephen G. Perdue

Inspector: Offie Helmick

Permit Issued: 1/10/2002

Well work commenced: 04/29/02

Well work completed: 06/28/02

Verbal Plugging

Permission granted on:

Rotary Rig  Cable Rig

Total Depth 1681 feet

Fresh water depths (ft) none noted

Salt water depths (ft) none noted

Is coal being mined in area?

Coal Depths (ft):

Casing & Tubing Size	Used In Drilling	Left in Well	Cement Fill Up Cu. Ft.
12 3/4"	20'	20'	grouted
9 5/8"	358'	358'	153 ft <sup>3</sup>
4 1/2"	1622'	1622'	142 ft <sup>3</sup>
2 3/8"		1620'	

RECEIVED  
Office of Oil & Gas  
Permitting  
APR 02 2003  
WV Department of  
Environmental Protection  
See Attach

OPEN FLOW DATA

Producing formation Squire Jim/Poca 1-3; Poca 4-6; Poca 7-9; Fire Creek/Lower Fire Crk Pay Zone Depth (ft): for details

Gas: Initial open flow \_\_\_\_\_ MCF/d Oil: Initial open flow \_\_\_\_\_ Bbl/d

Final open flow: 0 (in line) MCF/d Final open flow: \_\_\_\_\_

Pump testing

Time of open flow between initial and final tests \_\_\_\_\_ Hours

Static rock pressure 278 psig (surface pressure) after \_\_\_\_\_ Hours

Second producing formation \_\_\_\_\_ Pay Zone Depth (ft): \_\_\_\_\_

Gas: Initial open flow \_\_\_\_\_ MCF/d Oil: Initial open flow \_\_\_\_\_ Bbl/d

Final open flow: \_\_\_\_\_ MCF/d Final open flow: \_\_\_\_\_

Time of open flow between initial and final tests \_\_\_\_\_ Hours

Static rock pressure \_\_\_\_\_ psig (surface pressure) after \_\_\_\_\_ Hours

NOTE: ON BACK OF THIS FORM PUT THE FOLLOWING: 1) DETAILS OF PERFORATED INTERVALS, FRACTURING OR STIMULATING, PHYSICAL CHANGE, ETC. 2) THE WELL LOG WHICH IS A SYSTEMATIC DETAILED GEOLOGICAL RECORD OF ALL FORMATIONS, INCLUDING COAL ENCOUNTERED BY THE WELLBORE.

For: Equitable Production Company

By: Chuck A. Blinn  
Date: 3/27/03

McDow  
1599

APR 25 2003

**EQUITABLE PRODUCTION COMPANY  
WR-35 COMPLETION REPORT - Attachment  
Well Treatment Summary**

Well: WVC-506515

API# 47-047-01599

Date	06/19/02	06/21/02	06/24/02	06/24/02		
Type Frac Acid, N <sub>2</sub> , Foam, Water	140 Delta	140 Delta	140 Delta	140 Delta		
Zone Treated	Squire Jim Poca 1-3	Poca 4-6	Poca 7-9	Fire Creek Lower Fire Crk		
# Perfs From - To:	32 1452'-1598.5'	32 1292' - 1370'	24 H 1142' - 1243'	32 1048.5' - 1093'		
BD Pressure @ psi	2672	2733	3645	3308		
ATP psi	3006	1698	3012	2719		
Avg. Rate, B=B/M, S= SCFM	11.1 B	14.1 B	9.2 B	12.3 B		
Max. Treat Press psi	4349	4300	3963	3723		
ISIP psi	1366		1781	1803		
Frac Gradient	1.33		1.93	2.11		
10 min S-I Pressure	1287 (5 min)		1050 (5 min)	1539 (5 min)		
Material Volume						
Sand-sks	226	223	162	223		
Water-bbl	423.2	378	292	303		
SCF N <sub>2</sub>						
Acid-gal	600 gal 7 ½%	300 gal 7 ½%	300 gal 7 ½%	300 gal 7 ½%		
NOTES:		Well screened out				

TOP	BOTTOM	FORMATION	REMARKS
1048.25'	1051'	BECKLEY	
		FIRE CREEK	
		LOWER FIRE	
1091.5'	1093'	CREEK	
1142'	1143.5'	POCA 9	
1215'	1215.25'	POCA 8	
1242'	1243.5'	POCA 7	
1288.5'	1293.75'	POCA 6	
1337'	1338'	POCA 5	
1368'	1370.5'	POCA 4	
1452'	1454'	POCA 3	
1500.5'	1501'	POCA 2	
1540.75'	1542'	POCA 1	
1597.75'	1598.5'	SQUIRE JIM	
	1681'	TD	

