

**WEST VIRGINIA STATE PLANE COORDINATES**

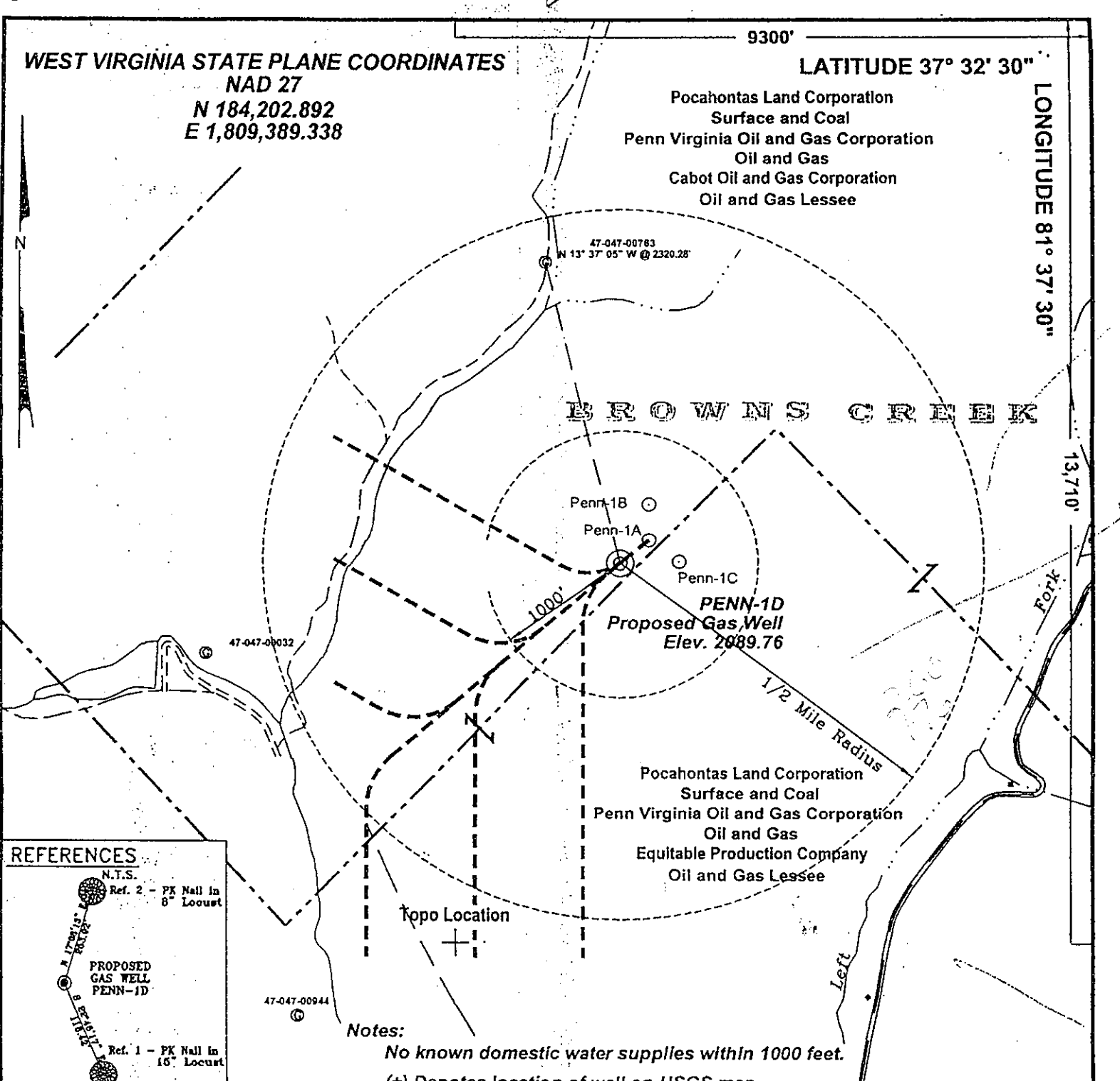
**NAD 27  
N 184,202.892  
E 1,809,389.338**

9300'

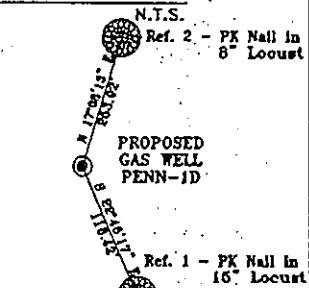
**LATITUDE 37° 32' 30"**

**LONGITUDE 81° 37' 30"**

Pocahontas Land Corporation  
Surface and Coal  
Penn Virginia Oil and Gas Corporation  
Oil and Gas  
Cabot Oil and Gas Corporation  
Oil and Gas Lessee



**REFERENCES**



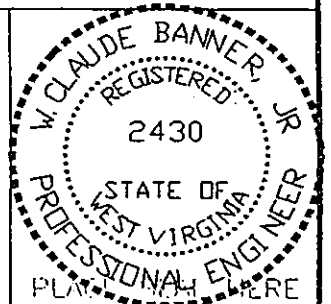
**Notes:**

No known domestic water supplies within 1000 feet.  
(+) Denotes location of well on USGS map.

FILE No. Clients\CDX  
DRAWING NAME \1140-02-005\  
DRAWING NAME Well 1D  
SCALE 1" = 1000'  
MINIMUM DEGREE OF ACCURACY 1:2500  
PROVEN SOURCE OF ELEVATION GPS - GLOBAL POSITIONING SYSTEM

I THE UNDERSIGNED, HEREBY CERTIFY THAT THIS PLAT IS CORRECT TO THE BEST OF MY KNOWLEDGE AND BELIEF AND SHOWS ALL THE INFORMATION REQUIRED BY LAW AND THE REGULATIONS ISSUED AND PRESCRIBED BY THE DEPARTMENT OF MINES.

(SIGNED) *W. Claude Banner, Jr.*  
R.P.E. 2430 R.P.S.



**STATE OF WEST VIRGINIA  
DIVISION OF ENVIRONMENTAL PROTECTION  
OFFICE OF OIL AND GAS  
NITRO, WV**

DATE April 29, 2002  
OPERATOR'S WELL No. PENN-1D  
API WELL No. 47 - 047 - 01656C  
STATE COUNTY PERMIT

WELL TYPE: OIL GAS CBM LIQUID INJECTION WASTE DISPOSAL  
(IF "GAS") PRODUCTION X STORAGE DEEP SHALLOW  
LOCATION: ELEVATION 2089.76' WATER SHED TRIBUTARY OF TWIN BRANCH OF TUG FORK  
DISTRICT BROWNS CREEK COUNTY McDOWELL  
QUADRANGLE BAILEYSVILLE, WV

SURFACE OWNER POCAHONTAS LAND CORPORATION ACREAGE 5,522.72  
CBM ROYALTY OWNER PENN VIRGINIA OIL AND GAS CORPORATION LEASE ACREAGE 5,522.72

LEASE No. \_\_\_\_\_

PROPOSED WORK: DRILL X CONVERT DRILL DEEPER REDRILL FRACTURE OR STIMULATE PLUG OFF OLD FORMATION PERFORATE NEW FORMATION OTHER PHYSICAL CHANGE IN WELL (SPECIFY)

PLUG AND ABANDON CLEAN OUT AND REPLUG  
TARGET FORMATION POCA NO. 3 AND PENN. COALS  
WELL OPERATOR CDX GAS, LLC  
ADDRESS P.O. BOX 609 PINEVILLE, WV 24874

ESTIMATED DEPTH 1414' JUN 07 2002  
DESIGNATED AGENT JOSEPH ZUPANICK  
ADDRESS P.O. BOX 609 PINEVILLE, WV 24874

*6-6 Baileysville (277)*

*Mc Dow 1656 C*

*MP*

State of West Virginia  
Division of Environmental Protection  
Section of Oil & Gas

Well Operator's Report of Well Work

Farm name: Pocahontas Land Corp.

Operator Well No: Penn-1D

Location: Elevation: 2089.76

Quadrangle: Baileysville

District: Browns Creek

County: McDowell

Latitude: 13,710 Feet South of 37 Deg. 32 Min. 30 Sec.  
Longitude: 9300 Feet West of 81 Deg. 37 Min. 30 Sec.

Company: CDX Gas, LLC  
P.O. Box 609  
Pineville, WV 24874

Agent: JOSEPH A. ZUPANICK

Inspector: RONNIE SCOTT  
Permit Issued: 06/05/02  
Well Work commenced: 07/14/02  
Well Work completed: 11/18/02  
Verbal plugging  
Permission granted on:  
Rotary x Cable \_\_\_\_\_ Rig  
Total depth (ft) 1416.48  
Fresh water depths (ft) N/A  
Salt water depths (ft) N/A  
Is coal being mined in the area (Y/N)? Y  
Coal depths (ft): 185', 309', 608', 679', 740', 889', 1034', 1331', 1361'

Casing & Tubing Size	Used in Drilling	Left in Well	Cement Fill up
13 3/8"	33'	33'	Surface
9 5/8"	760'	760'	Surface
7"	1015'	1015'	Surface

OPEN FLOW DATA

Producing formation Pocahontas No. 3 Seam  
Gas: Initial open flow N/A Mcf/d  
Final open flow N/A Mcf/d  
Time of open flow between initial and final tests: \_\_\_\_\_ hours

Pay zone depth (ft) 1361'  
Oil: Initial open flow \_\_\_\_\_ Bbl/d  
Final open flow \_\_\_\_\_ Bbl/d

Static rock pressure \_\_\_\_\_ psig (surface pressure) after \_\_\_\_\_ hours

Second Producing formation Pocahontas No.4 Seam

Gas: Initial open flow N/A Mcf/d  
Final open flow N/A Mcf/d  
Time of open flow between initial and final tests: \_\_\_\_\_ hours

Pay zone depth (ft) 1331'  
Oil: Initial open flow \_\_\_\_\_ Bbl/d  
Final open flow \_\_\_\_\_ Bbl/d

Static rock pressure \_\_\_\_\_ psig (surface pressure) after \_\_\_\_\_ hours

Note: ON BACK OF THIS FORM, PUT THE FOLLOWING: 1) DETAILS OF PERFORATED INTERVALS, FRACTURING OR STIMULATING, PHYSICAL CHANGE, ETC. 2) THE WELL LOG WHICH IS A SYSTEMATICK DETAILED GEOLOGICAL RECORD OF ALL FORMATIONS, INCLUDING COAL ENCOUNTERED BY THE WELLBORE.

Steven Pauley  
For: CDX Gas, LLC  
By: Steven Pauley  
Date: 2-21-03

*Mc Dow 1656 C*

MAR 28 2003

Operator: Penn-1D  
API No. 47- 47-01656 C  
Location: McDowell County

Details of Perforated Intervals, Fracturing or Stimulation, Physical Change, Etc.

N/A

Well Log & Geologic Record - Depths from K.B.

Formation	Top	Bottom
Overburden	0	8
Sandy Shale	8	47
Shale	47	55
Sandy Shale	55	78
Shale	78	83
Sandy Shale	83	128
Shale	128	135
Sandy Shale	135	146
Shale	146	185
Coal	185	186
Sandy Shale	186	198
Shale	198	249
Sandy Shale	249	305
Shale	305	309
Coal	309	311
Sandy Shale	311	392
Shale	392	444
Sandy Shale	444	453
Shale	453	460
Sandy Shale	460	511
Shale	511	567
Sandy Shale	567	605
Shale	605	608
Coal	608	610
Shale	610	630
Sandy Shale	630	639
Shale	639	675
Sandy Shale	675	679
Coal	679	681
Sandy Shale	681	740
Coal	740	740.5
Sandy Shale	740.5	770
Shale	770	777
Sandy Shale	777	889

Formation	Top	Bottom
Coal	889	890
Shale	890	963
Sandy Shale	963	970
Shale	970	972
Sandy Shale	972	1002
Shale	1002	1034
Coal	1034	1036
Sandy Shale	1036	1060
Shale	1060	1098
Sandy Shale	1098	1140
Shale	1140	1190
Sandstone	1190	1256
Sandy Shale	1256	1294
Shale	1294	1312
Sandy Shale	1312	1331
Coal	1331	1335
Shale	1335	1361
Coal	1361	1363.5
Shale	1363.5	1378
Sandy Shale	1378	1416

M<sup>c</sup> Dow 1656 C