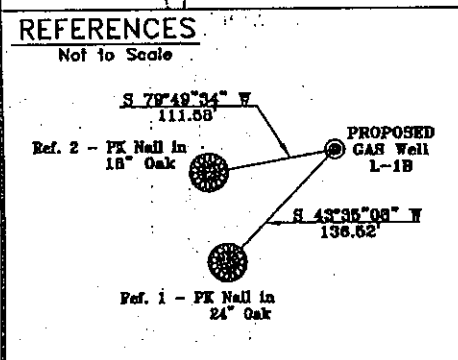
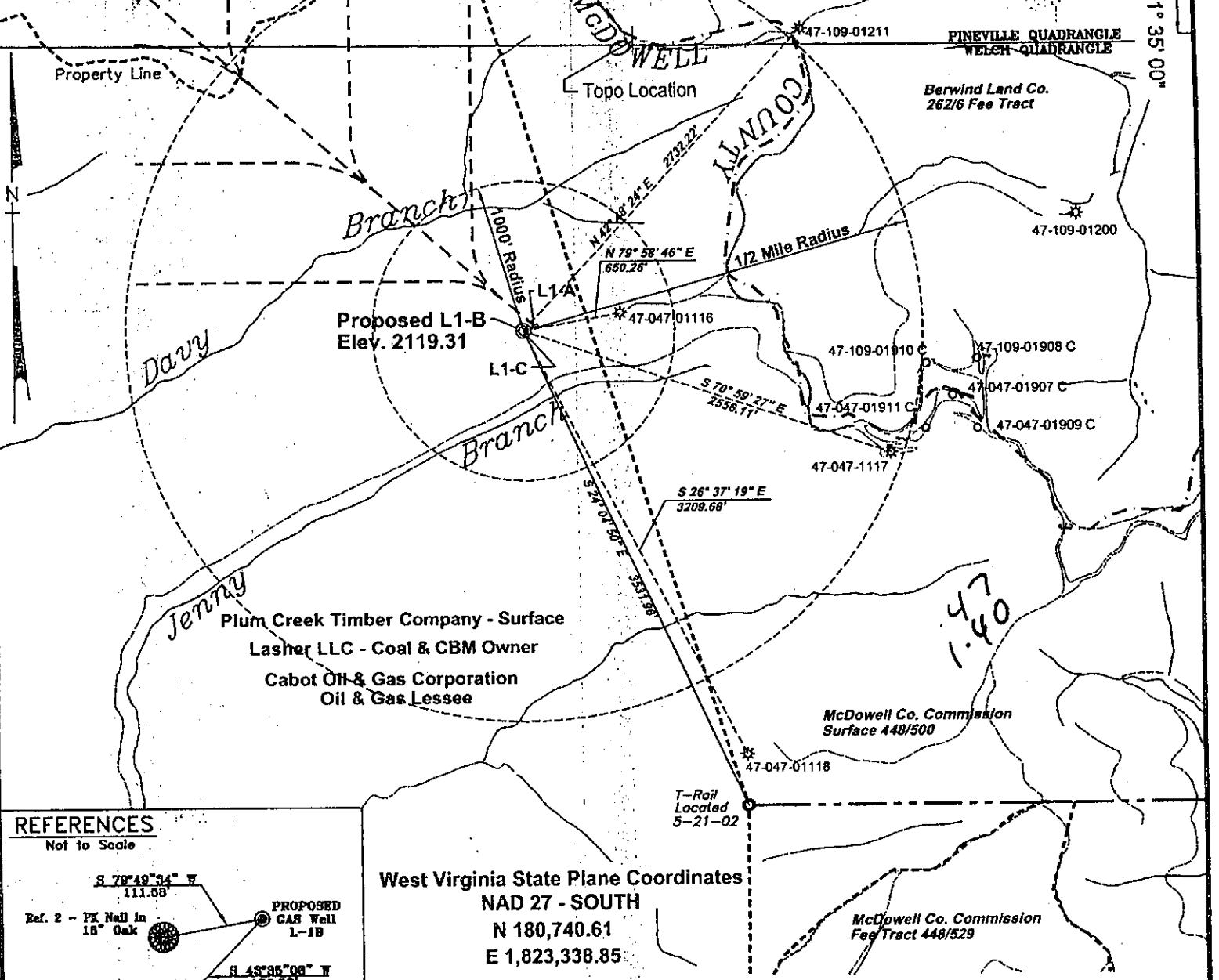


U.S. Steel Mining Co., LLC  
 Poca. No. 3 & 4 Seam - Coal  
 Oil & Gas Owner  
 Dominion Exploration & Production Inc.  
 Oil & Gas Lessee



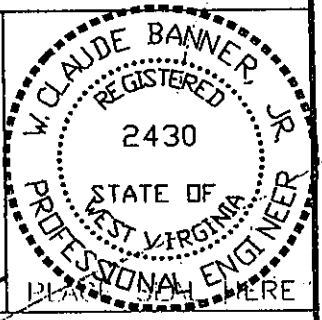
West Virginia State Plane Coordinates  
 NAD 27 - SOUTH  
 N 180,740.61  
 E 1,823,338.85

**Notes:**  
 No known domestic water supplies within 1000 feet of L1-B  
 (+) Denotes location of well on USGS map.  
 Property Information taken from McDowell Co. Tax Records

FILE No. Cdx-2002  
 DIRECTORY C:\Cdx-2002\L-1Wells  
 Drawing Number PlatL-1B  
 SCALE 1" = 1000'  
 MINIMUM DEGREE OF ACCURACY 1 : 2500  
 PROVEN SOURCE OF ELEVATION GPS - GLOBAL POSITIONING SYSTEM

I THE UNDERSIGNED, HEREBY CERTIFY THAT THIS PLAT IS CORRECT TO THE BEST OF MY KNOWLEDGE AND BELIEF AND SHOWS ALL THE INFORMATION REQUIRED BY LAW AND THE REGULATIONS ISSUED AND PRESCRIBED BY THE DEPARTMENT OF MINES.

(SIGNED) W. Claude Banner  
 R.P.E. 2430 R.P.S.



**STATE OF WEST VIRGINIA**  
**DIVISION OF ENVIRONMENTAL PROTECTION**  
**OFFICE OF OIL AND GAS**  
**CHARLESTON, WV**

DATE JUNE 26, 2002  
 OPERATOR'S WELL No. L-1B  
 API WELL No. 47 - 047 - 01687C

WELL TYPE: OIL  GAS  CBM  LIQUID INJECTION  WASTE DISPOSAL   
 (IF "GAS") PRODUCTION  STORAGE  DEEP  SHALLOW  STATE COUNTY PERMIT

LOCATION: ELEVATION 2119.31 WATER SHED DAVY BRANCH / JENNY BRANCH OF TUG FORK  
 DISTRICT BROWNS CREEK COUNTY MCDOWELL  
 QUADRANGLE WELCH, WV

SURFACE OWNER PLUM CREEK TIMBER COMPANY ACREAGE             
 CBM ROYALTY OWNER LASHER, LLC LEASE ACREAGE             
 CBM ROYALTY OWNER U.S. STEEL MINING COMPANY, LLC LEASE ACREAGE           

LEASE No.           

PROPOSED WORK: DRILL  CONVERT  DRILL DEEPER  REDRILL  FRACTURE OR STIMULATE  PLUG OFF OLD FORMATION  PERFORATE NEW FORMATION  OTHER PHYSICAL CHANGE IN WELL (SPECIFY)           

PLUG AND ABANDON  CLEAN OUT AND REPLUG

TARGET FORMATION POCAHONTAS NO. 3 & PENN. COALS ESTIMATED DEPTH 1379'  
 WELL OPERATOR CDX GAS, LLC DESIGNATED AGENT JOE ZUPANICK  
 ADDRESS P.O. BOX 609 ADDRESS P.O. BOX 609  
PINEVILLE, WV 24874 PINEVILLE, WV 24874

AUG 2 2002

(3 SALESVILLE 272) CBM

State of West Virginia  
Division of Environmental Protection  
Section of Oil & Gas

*Handwritten initials*

Well Operator's Report of Well Work

Farm name: Pocahontas Land Corp.

Operator Well No: L-1B

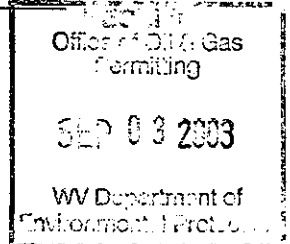
Location: Elevation: 2119.31'

Quadrangle: Welch

District: Browns Creek

County: McDowell

Latitude: 7428' Feet South of 37 Deg. 30 Min. 00 Sec.  
Longitude: 2478' Feet West of 81 Deg. 35 Min. 00 Sec.



Company: CDX Gas, LLC  
P.O. Box 609  
Pineville, WV 24874

Agent: JOSEPH A. ZUPANICK

Inspector: Ronnie Scott  
Permit Issued: 6/29/02  
Well Work commenced: 4/13/02  
Well Work completed: 7/1/03  
Verbal plugging  
Permission granted on:  
Rotary x Cable \_\_\_\_\_ Rig  
Total depth (ft) 1473' TVD  
Fresh water depths (ft) N/A  
Salt water depths (ft) N/A  
Is coal being mined in the area (Y/N)? Y  
Coal depths (ft): 633, 766, 768, 1269, 1270, 1271, 1380, 1414, 1423, 1427, 1448, 1450

Casing & Tubing Size	Used in Drilling	Left in Well	Cement Fill up
13 3/8"	20'	20'	Surface
9 5/8"	269'	269'	Surface
7"	1279'	1279'	Surface
2 7/8"	1454'	1454'	Hanging

OPEN FLOW DATA

Producing formation Pocahontas No. 3

Gas: Initial open flow N/A Mcf/d  
Final open flow N/A Mcf/d

Pay zone depth 1423(ft)  
Oil: Initial open flow \_\_\_\_\_ Bbl/d  
Final open flow \_\_\_\_\_ Bbl/d

Time of open flow between initial and final tests: \_\_\_\_\_ hours

Static rock pressure \_\_\_\_\_ psig (surface pressure) after \_\_\_\_\_ hours

Second Producing formation \_\_\_\_\_

Gas: Initial open flow \_\_\_\_\_ Mcf/d  
Final open flow \_\_\_\_\_ Mcf/d

Pay zone depth (ft) \_\_\_\_\_  
Oil: Initial open flow \_\_\_\_\_ Bbl/d  
Final open flow \_\_\_\_\_ Bbl/d

Time of open flow between initial and final tests: \_\_\_\_\_ hours

Static rock pressure \_\_\_\_\_ psig (surface pressure) after \_\_\_\_\_ hours

Note: ON BACK OF THIS FORM, PUT THE FOLLOWING: 1) DETAILS OF PERFORATED INTERVALS, FRACTURING OR STIMULATING, PHYSICAL CHANGE, ETC. 2) THE WELL LOG WHICH IS A SYSTEMATIC DETAILED GEOLOGICAL RECORD OF ALL FORMATIONS, INCLUDING COAL ENCOUNTERED BY THE WELLBORE.

For: Steven Pauley  
ODX Gas, LLC  
By: [Signature]  
Date: 8-29-03

SEP 19 2003

*McDowell 1687 C*

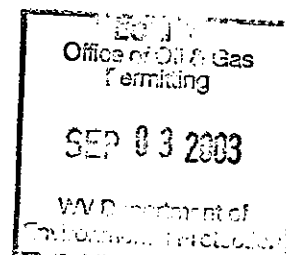
Operator: L-1B  
API No. 47-047-01687 C  
Location: McDowell County

Details of Perforated Intervals, Fracturing or Stimulation, Physical Change, Etc.

N/A

Well Log & Geologic Record - Depths from G.L.

Formation	Top	Bottom
Siltstone	0	9
Sandstone	9	12
Siltstone	12	25
Sandstone	9	27
Shale	27	51
Siltstone	51	71
Shale	71	76
Sandstone	76	77
Shale	77	80
Sandstone	80	88
Shale	88	101
Siltstone	101	108
Shale	108	120
Siltstone	120	124
Sandstone	124	132
Siltstone	132	139
Sandstone	139	141
Siltstone	141	154
Shale	154	161
Sandstone	161	222
Shale	222	224
Sandstone	224	226
Shale	226	229
Siltstone	229	242
Sandstone	242	278
Siltstone	278	284
Shale	284	295
Sandstone	295	300
Shale	300	303
Siltstone	303	310
Shale	310	383
Siltstone	383	385
Shale	385	391
Sandstone	391	436
Siltstone	436	444
Shale	444	452
Siltstone	452	457
Shale	457	505
Sandstone	505	531
Shale	531	533



Siltstone	533	550
Shale	550	553
Siltstone	553	561
Shale	561	578
Siltstone	578	588
Shale	588	596
Sandstone	596	598
Siltstone	598	605
Sandstone	605	620
Shale	620	633
Coal	633	635
Shale	635	661
Siltstone	661	676
Shale	676	682
Siltstone	682	711
Shale	711	714
Sandstone	714	716
Shale	716	723
Siltstone	723	731
Shale	731	736
Sandstone	736	740
Siltstone	740	746
Sandstone	746	750
Shale	750	753
Siltstone	753	758
Shale	758	765
Siltstone	765	766
Coal	766	767
Shale	767	768
Coal	768	769
Shale	769	774
Siltstone	774	787
Shale	787	788
Siltstone	788	802
Shale	802	805
Sandstone	805	846
Shale	846	847
Sandstone	847	852
Shale	852	860
Sandstone	860	861
Siltstone	861	873
Shale	873	895
Sandstone	895	919
Shale	919	925
Siltstone	925	927
Shale	927	935
Sandstone	935	955
Shale	955	960
Siltstone	960	1008
Sandstone	1008	1011
Shale	1011	1020
Siltstone	1020	1023
Shale	1023	1042

Office of Oil & Gas  
Permitting  
SEP 03 2003  
WV Department of  
Environmental Protection

SEP 03 2003

McDow  
1687  
C

Siltstone	1042	1072
Shale	1072	1126
Siltstone	1126	1131
Shale	1131	1139
Sandstone	1139	1145
Shale	1145	1149
Sandstone	1149	1269
Coal	1269	1270
Shale	1270	1271
Coal	1271	1272
Shale	1272	1289
Sandstone	1289	1292
Shale	1292	1301
Sandstone	1301	1330
Siltstone	1330	1336
Sandstone	1336	1369
Shale	1369	1380
Coal	1380	1381
Shale	1381	1397
Siltstone	1397	1413
Shale	1413	1414
Coal	1414	1415
Shale	1415	1423
Coal	1423	1426
Shale	1426	1427
Coal	1427	1428
Shale	1428	1438
Siltstone	1438	1445
Shale	1445	1448
Coal	1448	1449
Shale	1449	1450
Coal	1450	1451
Shale	1451	1473

