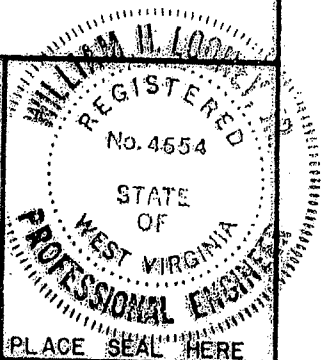


REFERENCES SCALE 1" = 100'

FILE NO. 01079
 DRAWING NO. 2
 SCALE 1"=1000'
 MINIMUM DEGREE OF ACCURACY 1/200
 PROVEN SOURCE OF ELEVATION BM 1312

I THE UNDERSIGNED, HEREBY CERTIFY THAT THIS PLAT IS CORRECT TO THE BEST OF MY KNOWLEDGE AND BELIEF AND SHOWS ALL THE INFORMATION REQUIRED BY LAW AND THE REGULATIONS ISSUED AND PRESCRIBED BY THE DEPARTMENT OF MINES.
 (SIGNED) Tom. N. Love Jr.
 R.P.E. # 4654 L.L.S.



(+) DENOTES LOCATION OF WELL ON UNITED STATES TOPOGRAPHIC MAPS
 FORM IV-6 (8-78)

DATE JUNE 12, 2008
 OPERATOR'S WELL NO. 2
 API WELL NO. 47-047-1797-F
 STATE COUNTY PERMIT

Division of Environmental Protection
 Office of Oil & Gas

WELL TYPE: OIL GAS X LIQUID INJECTION WASTE DISPOSAL
 (IF "GAS", PRODUCTION X STORAGE DEEP SHALLOW)
 LOCATION: ELEVATION 2299' WATER SHED TUG FORK WATERSHED
 DISTRICT BROWNS CREEK COUNTY MCDOWELL
 QUADRANGLE WELCH

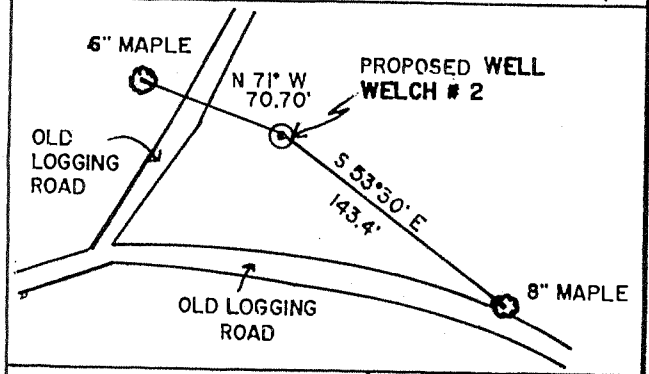
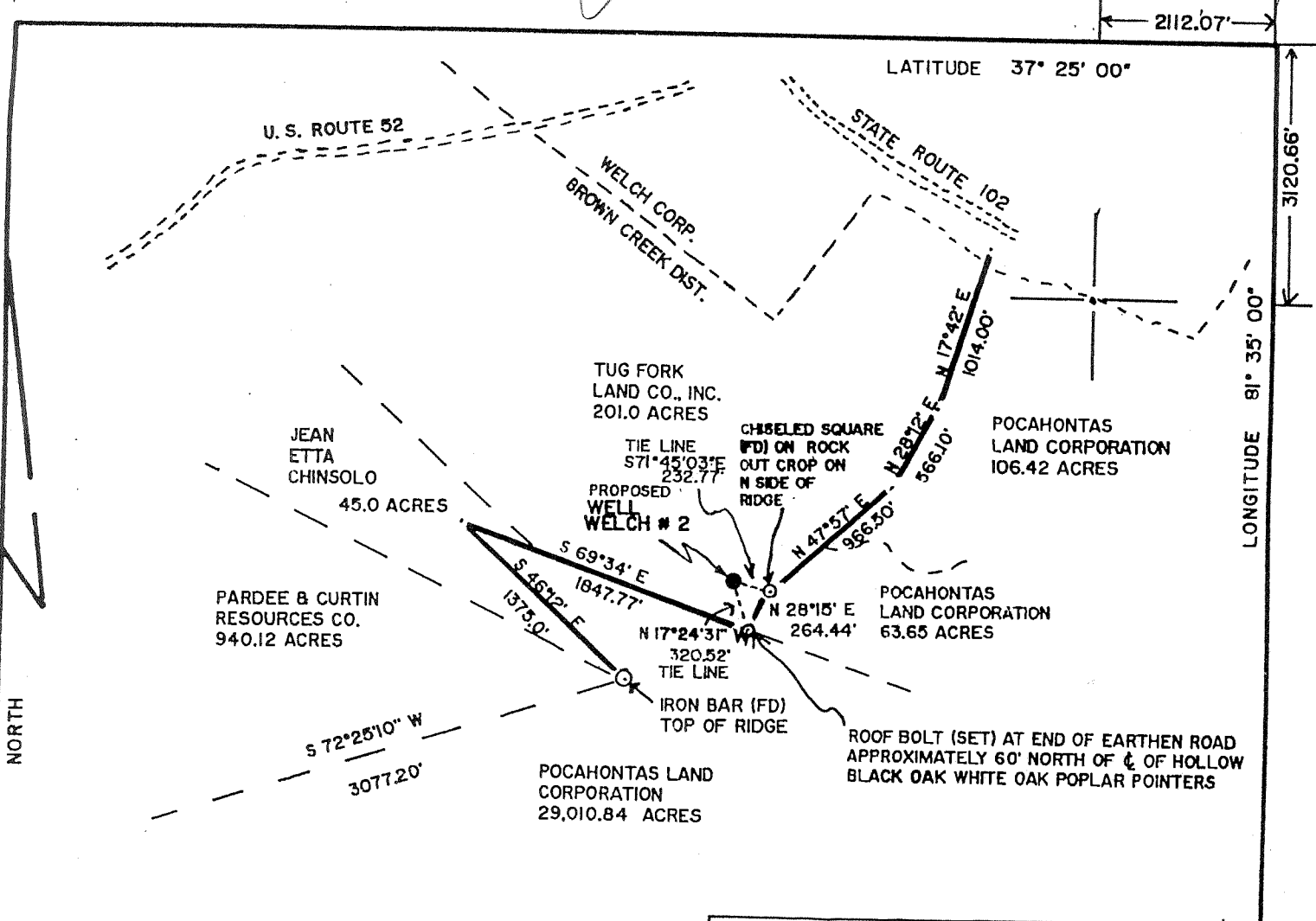
SURFACE OWNER TUG FORK LAND CO. ACREAGE 201 ±
 OIL & GAS ROYALTY OWNER ENERGY DEVELOPMENT CORP. LEASE ACREAGE 624.04
 LEASE NO.

PROPOSED WORK: DRILL X CONVERT DRILL DEEPER REDRILL FRACTURE OR STIMULATE X PLUG OFF OLD FORMATION PERFORATE NEW FORMATION OTHER PHYSICAL CHANGE IN WELL (SPECIFY)

PLUG AND ABANDON CLEAN OUT AND REPLUG

TARGET FORMATION BEREA, GORDON ESTIMATED DEPTH 478'
 WELL OPERATOR ENERGY DEVELOPMENT CORP. DESIGNATED AGENT SANDRA K. BELCHER
 ADDRESS 534 VIRGINIA AVENUE ADDRESS RTE. 3 BOX 425
BLUEFIELD, VA. 24605 BLUEFIELD, WV 24701

AUG 08 2008



REFERENCES

SCALE: 1" = 100'

FILE NO. 01079
 DRAWING NO. 2
 SCALE 1" = 1,000'
 MINIMUM DEGREE OF ACCURACY V200
 PROVEN SOURCE OF ELEVATION BM 1312

I THE UNDERSIGNED, HEREBY CERTIFY THAT THIS PLAT IS CORRECT TO THE BEST OF MY KNOWLEDGE AND BELIEF AND SHOWS ALL THE INFORMATION REQUIRED BY LAW AND THE REGULATIONS ISSUED AND PRESCRIBED BY THE DEPARTMENT OF MINES.
 (SIGNED) Wm. T. Honey Jr.
 R. P. E. 4654 L. L. S.

REGISTERED
 PLACE SEAL HERE

(+) DENOTES LOCATION OF WELL ON UNITED STATES TOPOGRAPHIC MAPS
 FORM IV-6
 (8-78)



Division of Environmental Protection
 Office of Oil & Gas

DATE 10-10-02, 2002
 OPERATOR'S WELL NO. WELCH # 2
 API WELL NO. 47 - 47 - 01797
 STATE COUNTY PERMIT

WELL TYPE: OIL ___ GAS X LIQUID INJECTION ___ WASTE DISPOSAL ___
 (IF "GAS", PRODUCTION X STORAGE ___ DEEP ___ SHALLOW ___)
 LOCATION: ELEVATION 2209' WATER SHED TUG FORK
 DISTRICT BROWNS CREEK COUNTY McDOWELL
 QUADRANGLE WELCH
 SURFACE OWNER TUG FORK LAND CO., INC. ACREAGE 201 ±
 OIL & GAS ROYALTY OWNER ENERGY DEVELOPMENT CORPORATION LEASE ACREAGE 624.04 ±
 LEASE NO. _____
 PROPOSED WORK: DRILL X CONVERT ___ DRILL DEEPER ___ REDRILL ___ FRACTURE OR
 STIMULATE X PLUG OFF OLD FORMATION ___ PERFORATE NEW
 FORMATION ___ OTHER PHYSICAL CHANGE IN WELL (SPECIFY) _____
 PLUG AND ABANDON ___ CLEAN OUT AND REPLUG ___
 TARGET FORMATION BEREA, GORDON ESTIMATED DEPTH 5144'
 WELL OPERATOR ENERGY DEVELOPMENT CORP. DESIGNATED AGENT SANDRA K. BELCHER
 ADDRESS 534 VIRGINIA AVE. ADDRESS RT. 3 BOX 425
BLUEFIELD, VA 24605 BLUEFIELD, WY 24701

McDowell 1797

CHARLESTON BLUEPRINT 092941

State of West Virginia
DEPARTMENT OF ENERGY
Division of Oil and Gas
Well Operator's Report of Well Work

Farm Name: Tug Fork Land Co. Operator Well No. Welch #2
Location: Elevation: 2209' Quadrangle: Welch 7.5
District: Browns Creek County: McDowell
Latitude: 3,121 Feet South of 37 Degrees 25 Minutes 0 Seconds
Longitude: 2,112 Feet West of 81 Degrees 35 Minutes 0 Seconds

Company: Energy Development Corp.
534 Virginia Avenue
Bluefield Va. 24605

Agent: Sandra Belcher
Inspector: Carlos Hively / Bill Hatfield
Permit Issued: 6/25/2003
Well work Commenced: 6/15/2005
Well work Completed: 6/22/2005
Verbal Plugging Permission granted on: NA
Rotary X Cable Tool Rig
Total Depth (ft): LTD- 6594' DTD- 6561'
Fresh Water Depths (ft): none
Salt Water Depths (ft): none
Is coal being mined in area: No
Coal Depths: 315-317', 500-502', 1130-1132', open mine 1141-1147'

Table with 4 columns: Casing & Tubing, Used in Drilling, Left in Well, Cement Fill Up Cu. Ft.
Rows: 20, 9 5/8, 7, 4 1/2

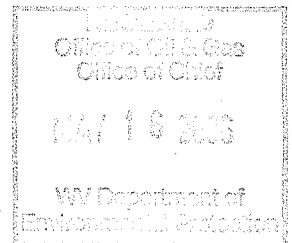
OPEN FLOW DATA:

Producing formation(s): Middle & Lower Huron Pay zone depth (ft) See back
Gas: Initial open flow trace MCF/D Oil: Initial open flow 0 Bbl/d
Final open flow 650 MCF/D Final open flow 0 Bbl/d
Time of open flow between initial and final tests: 36 Hours
Static rock pressure 910 psig (surface pressure) after 72 Hours

Second producing formation(s): NA Pay zone depth (ft) See back
Gas: Initial open flow MCF/D Oil: Initial open flow Bbl/d
Final open flow MCF/D Final open flow Bbl/d
Time of open flow between initial and final tests: Hours
Static rock pressure psig (surface pressure) after Hours

NOTE: ON THE BACK OF THIS FORM PUT THE FOLLOWING; 1). DETAILS OF PERFORATED INTERVALS, FRACTURING OR STIMULATING, PHYSICAL CHANGE, ETC. 2.)THE WELL LOG WHICH IS A SYSTEMATIC DETAILED GEOLOGICAL RECORD OF ALL FORMATIONS INCLUDING COAL ENCOUNTERED BY THE WELLBORE.

FOR: Energy Development Corporation
BY: [Signature], Pres.
DATE: May 10, 2006



MAY 19 2006

MCDOWELL 1797

6-27-2005

MIRU Key Energy, run GR/CCL bond log. Cased Logger's TD – 6560'. Calc TOC – 4210'.
Actual TOC – 4050'. MIRU swab rig at a later date, swab well dry.

3-8-06

MIRU Key Energy Services. Perforate Lower & Middle Huron (1st Stage)

3-18-06

MIRU Superior Well Services to conduct 1-stage completion.
Test lines to 4450 psi, top pressure set at 4000 psi.

1st Stage – Lower & Middle Huron (5789-6341', 47 holes), N₂ Frac

12 Bbls. (500 gals) 15% HCl, 2.05 MMscf N₂, 39 perf balls dropped in 10 stages
BKDN – 2,469 psi, ATP – 3,440 psi, AIR – 65.3 Mscf/min, ISIP – 2,465 psi

RDMO Superior Well Services. RU flowback and open well on 1/4" choke.

MAY 19 2006

Formation Depths taken from Driller's Log Book

Overburden	0	-	5'
Sand rock	5	-	12'
Sandstone	12	-	30'
Sandy Shale	30'	-	315'
Coal	315'	-	317'
Sandstone	317'	-	500'
Coal	500'	-	502'
Sandy Shale - streaky	502'	-	1130'
Coal	1130'	-	1132'
Sandy Shale - streaky	1132'	-	1141'
Coal (open mine)	1141'	-	1147'
Sandstone	1147'	-	1420'
Sandy Shale - streaky	1420'	-	2054'

Formation Depths taken from Gamma Ray Log

Ravenciff	2054'	-	2166'	Gas check at 2075'- no show
Sand/Shale	2166'	-	2196'	
Avis Lime	2196'	-	2244'	Gas check at 2202'- trace
Shale/Sand	2244'	-	2696'	
Maxon	2696'	-	2740'	
Shale/Sand	2740'	-	3295'	
Little Lime	3295'	-	3376'	
Shale	3376'	-	3458'	Gas check at 3403'- trace
Big Lime	3458'	-	4124'	
Shale	4124'	-	4149'	
Weir	4149'	-	4372'	
Shale	4372'	-	4732'	Gas check at 4705'- trace
Coffee Shale	4732'	-	4749'	
Berea	4749'	-	4787'	
Shale	4787'	-	6210'	
Lower Huron	6210'	-	6344'	
Java	6344'	-	6594'	LTD Gas check at 6594'- trace

Total Depth 6594' LTD

Well Logged by Allegheny Wireline Services

MAY 19 2006

Mc Dow 1797