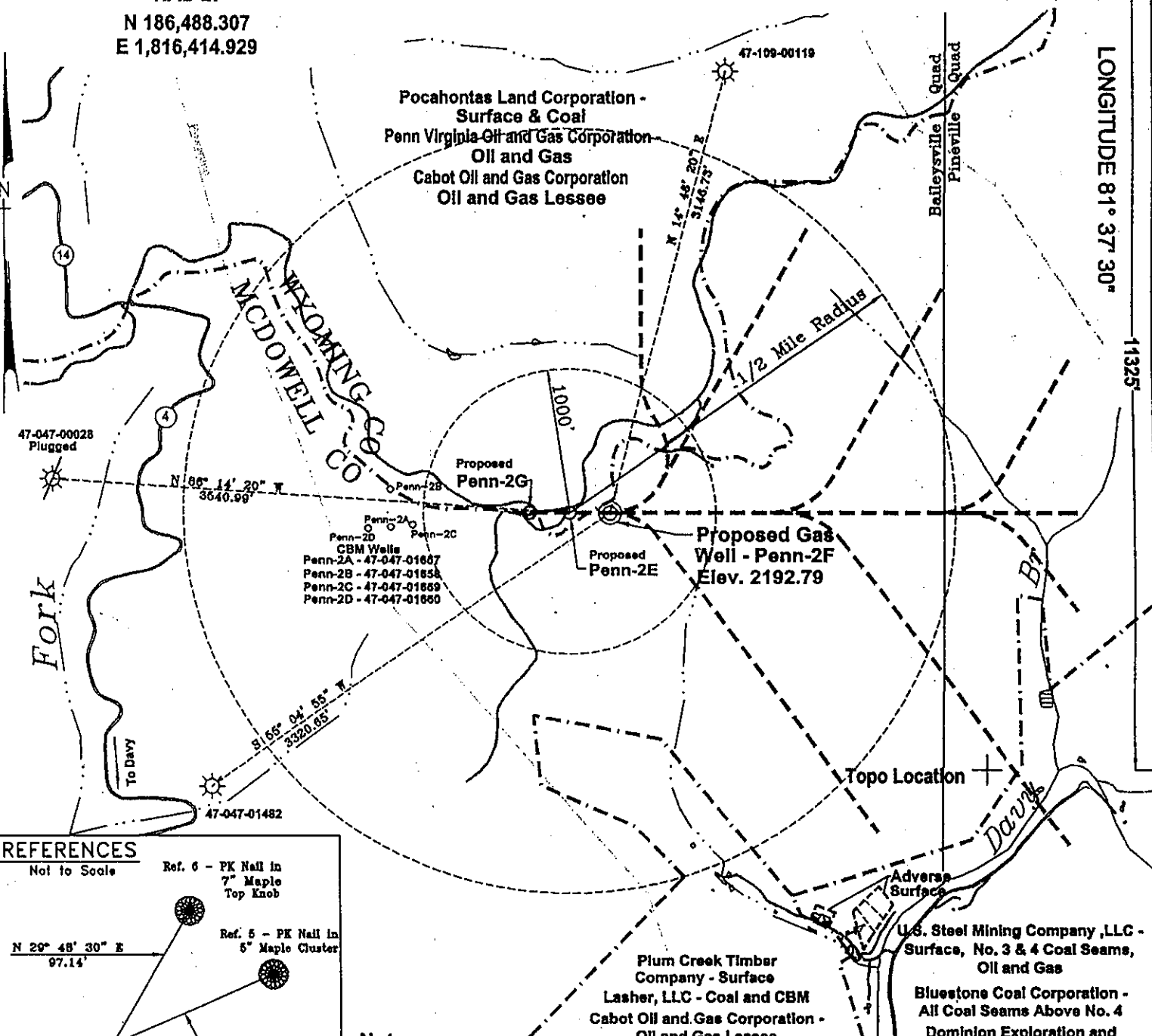


West Virginia State Plane Coordinates
NAD 27

N 186,488.307
E 1,816,414.929

LATITUDE 37° 32' 30"

LONGITUDE 81° 37' 30"



REFERENCES
Not to Scale

Ref. 6 - PK Nail in 7" Maple Top Knob
N 06° 14' 20" E 3640.99'

Ref. 5 - PK Nail in 5" Maple Cluster
N 29° 48' 30" E 97.14'

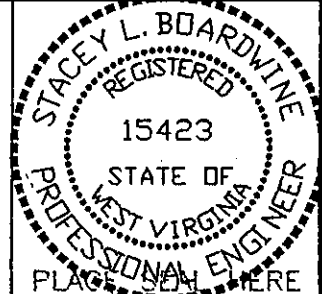
PROPOSED GAS Well Penn-2F
N 66° 24' 40" E 109.34'

Notes:
No known domestic water supplies within 1000 feet.
(+) Denotes location of well on USGS map.

FILE No. CDXGAS
DRAWING NAME \CDX-2003\PlotPenn-2F
DRAWING NAME PlotPenn-2F
SCALE 1" = 1000'
MINIMUM DEGREE OF ACCURACY 1 : 2500
PROVEN SOURCE OF ELEVATION GPS - GLOBAL POSITIONING SYSTEM

I THE UNDERSIGNED, HEREBY CERTIFY THAT THIS PLAT IS CORRECT TO THE BEST OF MY KNOWLEDGE AND BELIEF AND SHOWS ALL THE INFORMATION REQUIRED BY LAW AND THE REGULATIONS ISSUED AND PRESCRIBED BY THE DEPARTMENT OF MINES.

(SIGNED) Stacey L Boardwine
R.P.E. 15423 R.P.S. _____



STATE OF WEST VIRGINIA
DEPARTMENT OF ENVIRONMENTAL PROTECTION
OFFICE OF OIL AND GAS
CHARLESTON, WV

DATE May 20, 2003
OPERATOR'S WELL No. Penn-2F
API WELL No. _____
47 - 047 - 01811-C
STATE COUNTY PERMIT

WELL TYPE: OIL GAS CBM LIQUID INJECTION WASTE DISPOSAL
(IF "GAS") PRODUCTION X STORAGE DEEP SHALLOW

LOCATION: ELEVATION 2192.79 WATER SHED UNNAMED TRIBUTARY OF DAVY BRANCH OF TUG FORK
DISTRICT BROWNS CREEK COUNTY McDOWELL
QUADRANGLE BAILEYSVILLE, WV

SURFACE OWNER POCAHONTAS LAND CORPORATION ACREAGE 5,296.08
CBM ROYALTY OWNER PENN VIRGINIA OIL AND GAS CORPORATION LEASE ACREAGE _____
U.S. STEEL MINING COMPANY, LLC
LEASE No. _____

PROPOSED WORK: DRILL X CONVERT DRILL DEEPER REDRILL FRACTURE OR
STIMULATE PLUG OFF OLD FORMATION PERFORATE NEW
FORMATION OTHER PHYSICAL CHANGE IN WELL (SPECIFY) _____

PLUG AND ABANDON CLEAN OUT AND REPLUG
TARGET FORMATION POCAHONTAS NO. 3 AND PENN. COALS ESTIMATED DEPTH 1500'
WELL OPERATOR CDX GAS, LLC DESIGNATED AGENT JOSEPH ZUPANICK
ADDRESS P.O. BOX 609 ADDRESS P.O. BOX 609
PINEVILLE, WV 24874 PINEVILLE, WV 24874

McDow 1811-C

12/17

State of West Virginia
Division of Environmental Protection
Section of Oil & Gas

Well Operator's Report of Well Work

Farm name: Pocahontas Land Corp.

Operator Well No: Penn2F

Location: Elevation: 2191.87'

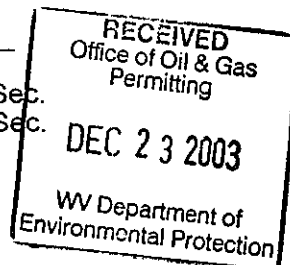
Quadrangle: Baileysville

District: Browns Creek

County: McDowell

Latitude: 11325 Feet South of 37 Deg. 32 Min. 30 Sec.

Longitude: 2315 Feet West of 81 Deg. 37 Min. 30 Sec.



Company: CDX Gas, LLC
P.O. Box 609
Pineville, WV 24874

Agent: JOSEPH A. ZUPANICK

Inspector: Ronnie Scott
Permit Issued: 7/3/2003
Well Work commenced: 7/23/2003
Well Work completed: 9/30/2003
Verbal plugging
Permission granted on:
Rotary x Cable _____ Rig
Total depth (ft) 1483'
Fresh water depths (ft) N/A
Salt water depths (ft) N/A
Is coal being mined in the area (Y/N)? Y
Coal depths (ft): 341,358,723,795,1069,1187
1341,1434

Casing & Tubing Size	Used in Drilling	Left in Well	Cement Fill up
13 3/8"	32'	32'	22cuft
9 5/8"	708'	708'	222cuft
7"	1237'	1237'	186cuft
2 7/8"	1434'	1434'	Hanging

OPEN FLOW DATA

Producing formation Pocahontas No. 3

Pay zone depth (ft) 1434'

Gas: Initial open flow N/A Mcf/d
Final open flow N/A Mcf/d

Oil: Initial open flow _____ Bbl/d
Final open flow _____ Bbl/d

Time of open flow between initial and final tests: _____ hours

Static rock pressure _____ psig (surface pressure) after _____ hours

Second Producing formation _____

Pay zone depth (ft) _____

Gas: Initial open flow _____ Mcf/d
Final open flow _____ Mcf/d

Oil: Initial open flow _____ Bbl/d
Final open flow _____ Bbl/d

Time of open flow between initial and final tests: _____ hours

Static rock pressure _____ psig (surface pressure) after _____ hours

Note: ON BACK OF THIS FORM, PUT THE FOLLOWING: 1) DETAILS OF PERFORATED INTERVALS, FRACTURING OR STIMULATING, PHYSICAL CHANGE, ETC. 2) THE WELL LOG WHICH IS A SYSTEMATICK DETAILED GEOLOGICAL RECORD OF ALL FORMATIONS, INCLUDING COAL ENCOUNTERED BY THE WELLBORE.

Steven Pauley
For: CDX Gas, LLC
By: Steven Pauley
Date: 12-19-03

FEB 27 2004

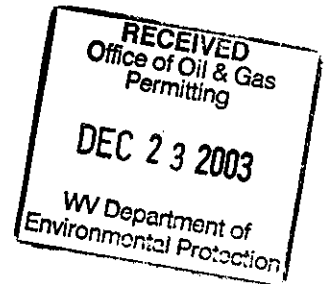
Mc Dow 1811 C

Operator: Penn2F
 API No. 47- 047-01811 C
 Location: McDowell County

Details of Perforated Intervals, Fracturing or Stimulation, Physical Change, Etc. N/A

Well Log & Geologic Record - Depths from G.L.

Lithology	Depth in Feet	
	Top	Bottom
Casing	0	23
Shale	23	48
Sandy Shale	48	80
Shale	80	104
Sandy Shale	104	120
Shale	120	215
Sandy Shale	215	235
Shale	235	290
Sandy Shale	290	320
Shale	320	341
Coal	341	342
Shale	342	358
Coal	358	359
Shale	359	364
Sandy Shale	364	384
Shale	384	397
Sandy Shale	397	415
Shale	485	525
Sandy Shale	525	610
Sandy Shale	610	649
Shale	649	674
Sandy Shale	674	687
Shale	687	723
Coal	723	724
Sandy Shale	724	795
Coal	795	796
Sandy Shale	796	864
Shale	864	876
Sandstone	876	928
Shale	928	973
Sandy Shale	973	1005
Sandstone	1005	1032
Shale	1032	1069
Coal	1069	1072
Shale	1072	1115
Sandy Shale	1115	1187
Coal	1187	1188
Sandy Shale	1188	1268
Sandstone	1268	1295



McDow 1811 C

FEB 27 2004

Continued

Shale	1295	1341
Coal	1341	1342
Sandy Shale	1342	1350
Sandstone	1350	1374
Sandy Shale	1374	1426
Shale	1426	1434
Coal	1434	1437
Shale	1437	1483
End of Hole		

RECEIVED
Office of Oil & Gas
Permitting
DEC 23 2003
WV Department of
Environmental Protection