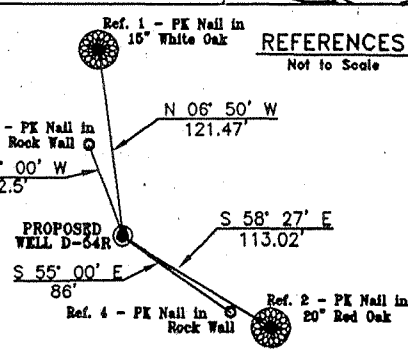
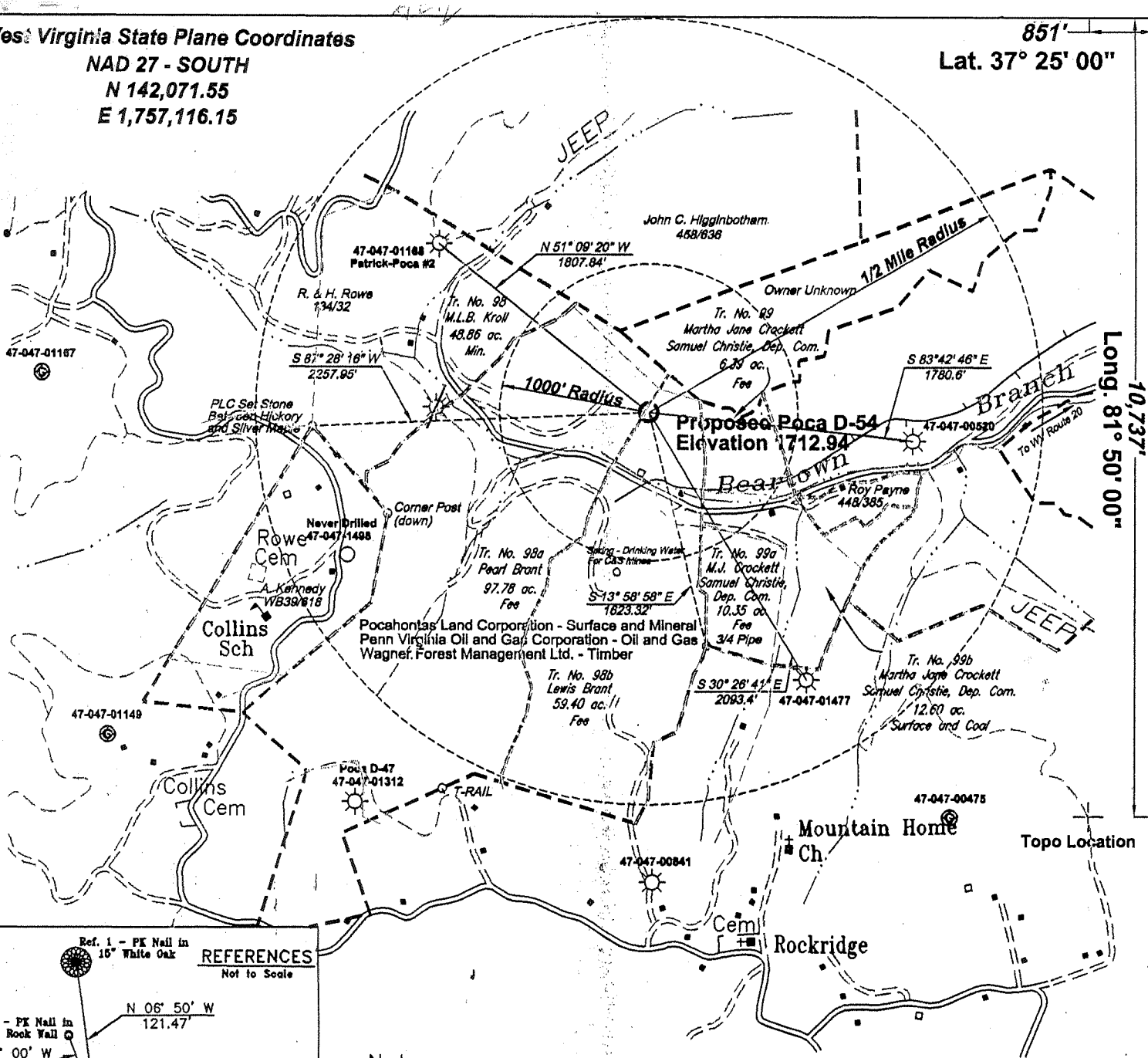


es: Virginia State Plane Coordinates
 NAD 27 - SOUTH
 N 142,071.55
 E 1,757,116.15

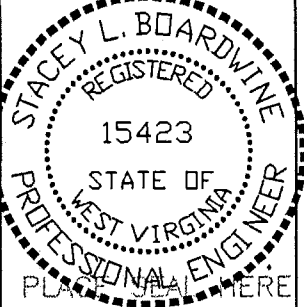
851'
 Lat. 37° 25' 00"



Notes:
 No dwellings exist within 200 feet of D-54R
 No Domestic Wells within 1000' of Gas Well Poca D-54R
 (+) Denotes location of well on USGS map.
 Property Information taken from McDowell County Tax Records
 Pocahontas Land Corporation Tract Lines

FILE No. CABOT OIL AND GAS 2003
 DIRECTORY C:\CABOT2003\D-54
 DRAWING NAME PlotD-54R.dwg
 SCALE 1" = 1000'
 ANGLE 0
 ANIMATED DEGREE OF 0
 ACCURACY 1 : 2500
 PROVEN SOURCE OF GPS
 ELEVATION GPS GLOBAL POSITIONING SYSTEM

I THE UNDERSIGNED, HEREBY CERTIFY THAT THIS PLAT IS CORRECT TO THE BEST OF MY KNOWLEDGE AND BELIEF AND SHOWS ALL THE INFORMATION REQUIRED BY LAW AND THE REGULATIONS ISSUED AND PRESCRIBED BY THE DEPARTMENT OF MINES.
 (SIGNED) Stacey L Boardwine
 R.P.E. 15423 R.P.S. _____



STATE OF WEST VIRGINIA
DEPARTMENT OF ENVIRONMENTAL PROTECTION
OFFICE OF OIL AND GAS
CHARLESTON, WV

DATE APRIL 6, 2004
 OPERATOR'S WELL No. D-54R
 API WELL No. 47 - 047 - 01836

WELL TYPE: OIL X GAS X LIQUID INJECTION WASTE DISPOSAL STATE COUNTY PERMIT
 (IF "GAS") PRODUCTION X STORAGE DEEP SHALLOW

LOCATION: ELEVATION 1712.94' WATER SHED TRIBUTARY OF BEARTOWN BRANCH OF DRY FORK
 DISTRICT SANDY RIVER COUNTY McDOWELL
 QUADRANGLE IAEGER, WV

SURFACE OWNER POCAHONTAS LAND COPORATION ACREAGE 59.40 (Tax Map 264, Parcel 23 & 24)
 ROYALTY OWNER PENN VIRGINIA OIL AND GAS CORPORATION LEASE ACREAGE 12,338.09

LEASE No. 47-0513

PROPOSED WORK: DRILL X CONVERT DRILL DEEPER REDRILL FRACTURE OR
 STIMULATE PLUG OFF OLD FORMATION PERFORATE NEW
 FORMATION OTHER PHYSICAL CHANGE IN WELL (SPECIFY) _____

PLUG AND ABANDON CLEAN OUT AND REPLUG
 TARGET FORMATION BEARFA ESTIMATED DEPTH 4505'
 WELL OPERATOR CABOT OIL & GAS CORP. DESIGNATED AGENT THOMAS S. LIBERATORE
 ADDRESS 900 LEE ST. EAST SUITE 1500 ADDRESS 900 LEE ST. EAST SUITE 1500
CHARLESTON, WV 25301 CHARLESTON, WV 25301

Mc Dow 1836

(BIG SANDY 285) 6-6