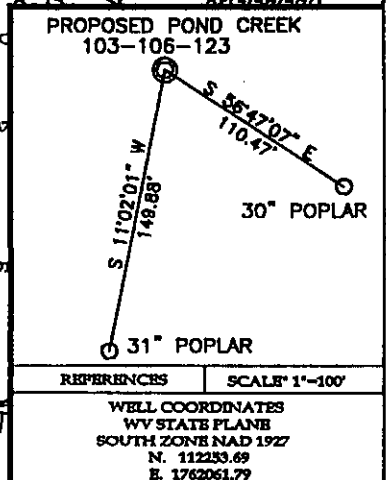


(+) DENOTES LOCATION OF WELL ON 7.5' TOPOGRAPHIC MAP



TEE Engineering Company, Inc.
 320 Carrers Hill Court
 Lexington, KY 40509
 (859) 263-3350
 Fax (859) 263-5345

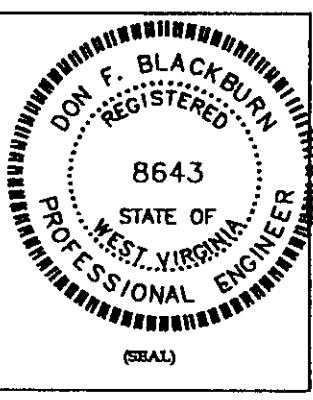
GeoMet Operating Company, Inc.
 Well No. Pond Creek 103-106-123

FILE NO. 1883-08/2003 WELLS
 DRAWING NO. WELL POND CREEK 123 PLAT
 SCALE: 1" = 2,000'
 MIN. DEGREE OF ACCURACY 1 : 2,500
 PROVEN SOURCE OF ELEVATION
 GPS STATION TEC-1 (ELEV. 2406.60)

I, THE UNDERSIGNED, HEREBY CERTIFY THAT THIS PLAT IS CORRECT TO THE BEST OF MY KNOWLEDGE AND BELIEF AND SHOWS ALL THE INFORMATION REQUIRED BY LAW AND THE REGULATIONS ISSUED AND PRESCRIBED BY THE DEPARTMENT OF MINES.

Don F. Blackburn
 (SIGNATURE)

R.P.E. 8643 R.P.S.



STATE OF WEST VIRGINIA
 DEPARTMENT OF ENVIRONMENTAL PROTECTION
 OFFICE OF OIL AND GAS

DATE JANUARY 12, 2004
 OPERATOR'S WELL NO. POND CREEK 103-106-123

WELL TYPE: OIL GAS CBM LIQUID INJECTION WASTE DISPOSAL
 (IF "GAS") PRODUCTION STORAGE DEEP SHALLOW

LOCATION: ELEVATION 1,619.36' NORTHING 112253.69 EASTING 1762061.79
 DISTRICT SANDY RIVER WATER SHED DRY MONDAY BRANCH OF SLATE CREEK
 QUADRANGLE BRADSHAW COUNTY McDOWELL

SURFACE OWNER PLUM CREEK TIMBERLANDS L.P. ACREAGE 9,907.37
 CBM ROYALTY OWNER PLUM CREEK TIMBERLANDS L.P. LEASE ACREAGE 9,907.37
 LEASE NO. RECORDING IN PROGRESS

PROPOSED WORK: DRILL CONVERT DRILL DHEPER REDRILL FRACTURE OR
 STIMULATE PLUG OFF OLD FORMATION PERFORATE NEW
 FORMATION OTHER PHYSICAL CHANGE IN WELL (SPECIFY) _____

PLUG AND ABANDON CLEAN OUT AND REPLUG

TARGET FORMATION NEW RIVER AND POCAHONTAS COALS ESTIMATED DEPTH 1,420'
 WELL OPERATOR GEOMET OPERATING COMPANY, INC. DESIGNATED AGENT KERRY HILL
 ADDRESS 5336 STADIUM TRACE PARKWAY SUITE 206 BIRMINGHAM, ALABAMA 35244
 ADDRESS 330 HARPER PARK DRIVE SUITE A BECKLEY, WV 25801

66 Bradshaw-CBM (383)

M-Dow 1901 C

State of West Virginia
Department of Environmental Protection
Office of Oil and Gas

RECEIVED
Office of Oil & Gas

JUL 06 2004

WV Department of
Environmental Protection

Well Operator's Report of Well Work

FARM NAME: Plum Creek Timberlands LP OPERATOR WELL NO.: PC 103-106-123

LOCATION:

Elevation: 1,619.36' Quadrangle: Bradshaw

District: Sandy River County: McDowell
Latitude: 7.662 Feet South of 37 Deg. 20 Min. 00 Sec.
Longitude: 10.175 Feet West of 81 Deg. 47 Min. 30 Sec.

Company: <u>GeoMet Operating Company</u>	Casing & Tubing	Used in Drilling	Left in Well	Cement fill up Cu. Ft.
Address: <u>5336 Stadium Trace Parkway, Suite 206 Birmingham, Alabama 35244</u>	<u>13-3/8"</u>	<u>59'</u>	<u>59'</u>	
Agent: <u>Gregg Cleary</u>				
Inspector: <u>Carlos Hively</u>	<u>8-5/8"</u>	<u>332'</u>	<u>332'</u>	<u>75 / Pumped 108</u>
Date Permit Issued: <u>March 31, 2004</u>				
Date Well Work Commenced: <u>6/3/2004</u>	<u>5-1/2"</u>	<u>1440'</u>	<u>1440'</u>	<u>249.5 / Pumped 286</u>
Date Well Work Completed: <u>6/9/2004</u>				
Verbal Plugging:				
Date Permission granted on:				
Rotary <u>XXXX</u> Cable <u> </u> Rig <u> </u>				
Total Depth (feet): <u>1443'</u>				
Fresh Water Depth (feet): <u>Unknown</u>				
Salt Water Depth (feet): <u>Unknown</u>				
Is coal being mined in area (N/Y)? <u>N</u>				

Coal Depths (feet): 356, 357, 385, 386, 429, 430, 680, 681, 777, 963, 964, 965, 966, 987, 1025, 1026, 1027, 1065, 1116, 1117, 1163, 1167, 1277

OPEN FLOW DATA

Producing formation All Zones Commingled Pay zone depth (ft) _____
Gas: Initial Open Flow N/A MCF/d Oil: Initial Open Flow _____ Bbl/d
Final Open Flow N/A MCF/d Final Open Flow _____ Bbl/d
Time of Open Flow between initial and final tests N/A Hours
Static Rock Pressure 285 psig (surface pressure) after 96 Hours

NOTE: ON BACK OF THIS FORM PUT THE FOLLOWING: 1). DETAILS OF PERFORATED INTERVALS, FRACTURING OR STIMULATING, PHYSICAL CHANGE, ETC. 2). THE WELL LOG WHICH IS A SYSTEMATIC DETAILED GEOLOGICAL RECORD OF ALL FORMATIONS, INCLUDING COAL ENCOUNTERED BY THE WELLBORE.

SIGNED: [Signature]
BY: Gregg Cleary
DATE: 7-1-04

AUG 18 2004

McDow 1901

DRILL DATA HOLE-NOAH HORN WELL DRILLING, INC

COMPANY: GEOMET

HOLE #: PC-123

LOCATION: BUG HURLEY

DRILL RIG #: 94

DATE STARTED: 06-01-04

DATED COMPLETED: 06-04-04

ELECTRIC LOGGED: YES

GROUTED: YES

DEPTH		THICKNESS	STRATA	REMARKS
FROM	TO	FT	DESCRIPTION, VOIDS ETC	
0	25	25	OVERBURDEN	
25	60	35	OVERBURDEN / SANDY SHALE 59' W/ 13 3/8" CASING	
60	92	32	SANDY SHALE / SANDSTONE	
92	123	31	SAND STONE / SANDY SHALE / COAL STR	
123	160	37	SAND STONE / SANDY SHALE / COAL STR / SAND STONE STR	
160	190	30	SANDY SHALE / SAND STONE	
190	220	30	SAND STONE / SANDY SHALE / COAL STR / SAND STONE STR	
220	250	30	SAND STONE	
250	280	30	SAND STONE STR / SANDY SHALE / 2 COAL STR / SAND STONE / SANDY SHALE	
280	310	30	SAND STONE / SANDY SHALE STR	
310	340	30	SANDY SHALE 332' W/ 8 5/8" CASING	
340	360	20	SAND STONE / 3 FT COAL / SAND STONE / SANDY SHALE	
360	390	30	SANDY SHALE / COAL STRKS / SAND STONE	
390	420	30	SAND STONE / SANDY SHALE	
420	450	30	SANDY SHALE / 5 FT COAL / SAND STONE	
450	480	30	SAND STONE / SHALE	
480	510	30	SAND STONE	
510	540	30	SANDY SHALE / SANDSTONE / SANDY SHALE	
540	570	30	SANDY SHALE STR / SAND STONE / SANDY SHALE	
570	600	30	SANDY SHALE / SAND STONE STR	
600	630	30	SANDY SHALE / COAL STR / SAND STONE	
630	660	30	SAND STONE / SANDY SHALE / COAL STR / SAND STONE STR	
660	690	30	SANDY SHALE / SAND STONE / COAL 2 / SANDY SHALE	
690	720	30	SANDY SHALE / SAND STONE STR	
720	750	30	SAND / SHALE	
750	780	30	SHALE / COAL / SHALE	
780	810	30	SAND / SHALE / SAND	
810	840	30	SAND	

PAGE 2
 GEOMET OPERATING CO
 POND CREEK 123

FROM	TO	FT.	DESCRIPTION
840	870	30	SANDY SHALE / COAL / SANDY SHALE
870	900	30	SAND / SANDY SHALE
900	930	30	SANDY SHALE / SAND
930	960	30	SAND / SANDY SHALE
960	990	30	SHALE / COAL / SHALE/SANDY SHALE
990	1020	30	SHALE / SANDY SHALE
1020	1050	30	SHALE / COAL / SHALE/SANDY SHALE
1050	1080	30	SHALE / COAL / SHALE/SAND
1080	1110	30	SAND
1110	1140	30	SAND / COAL/ S ANDY SHALE
1140	1170	30	SANDY SHALE
1170	1200	30	SANDY SHALE / SAND
1200	1230	30	SANDY SHALE / SAND
1230	1260	30	SAND / SANDY SHALE / SAND
1260	1320	60	SHALE / SAND
1320	1350	30	SANDY SHALE / SAND
1350	1410	60	SAND
1410	1440	30	SAND / SANDY SHALE

1440.00 FT. TOTAL DEPTH
 59.00 FT. OF 13 3/8" CASING
 332.00 FT. OF 8 5/8" CASING

AUG 18 2004

McDow 1901

GeoMet Operating Company, Inc.
Perforation and Frac Volume Specification

Well Name Pond Creek 123 PBTD 1431'

Zone and Perforation Table

Frac Stage	Interval		Ball Out	Bridge Plug Set @	Est Sand Weight	Actual Sand Weight
	Start	End				
Stage 1 Interval	1166'	1168'	No Ball Out 36 Balls on Plug @ 1140'		15,000	15,000
N2 Scf	1276'	1278				
Acid	243,000					
Gel Volume	250	15%				
ISIP	5,440	GAL				
ATP	1,713					
AIR	2,738					
	22	BPM				
Stage 2 Interval	1,064	1066	1116' - 1118' Ball Out; 36 Balls on Plug @ 1040		25,000	26,000
N2 Scf	308,000					
Acid	450	15%				
Gel Volume	9,240	GAL				
ISIP	1,212					
ATP	2,631					
AIR	28	BPM				
Stage 3 Interval	996	998	1025' - 1027' Balled Out 985'		30,000	31,000
N2 Scf	326,000					
Acid	450	7.5%				
Gel Volume	10,332	GAL				
ISIP	1,441					
ATP	2,684					
AIR	30	BPM				
Stage 4 Interval	963	966	Plug @ 795'		30,000	30,500
N2 Scf	271,000					
Acid	250	15%				
Gel Volume	7,770	GAL				
ISIP						
ATP	1,864					
AIR	34	BPM				
Stage 5 Interval	776	778	Plug @ 700'		25,000	27,000
N2 Scf	207,000					
Acid	450	15%				
Gel Volume	7,602					
ISIP	1,003					
ATP	1,943					
AIR	26	BPM				

Well Name Pond Creek 123

PBTD

1431'

Zone and Perforation Table

	680	682	Ball Out	Bridge Plug Set @	Est Sand Weight	Actual Sand Weight
Stage 6 Interval	680	682				
N2 Scf	248,000		No Plug		20,000	20,000
Acid	250	15%				
Gel Volume	6,006					
ISIP	1,193					
ATP	2,448					
AIR	18	BPM				
Stage 7 Interval						
N2 Scf						
Acid						
Gel Volume						
ISIP						
ATP						
AIR		BPM				
Stage 8 Interval						
N2 Scf						
Acid						
Gel Volume						
ISIP						
ATP						
AIR		BPM				
Stage 9 Interval						
N2 Scf						
Acid						
Gel Volume						
ISIP						
ATP						
AIR		BPM				
Stage 10 Interval						
N2 Scf						
Acid						
Gel Volume						
ISIP						
ATP						
AIR						

AUG 13 2004

Mc Dow 1901