

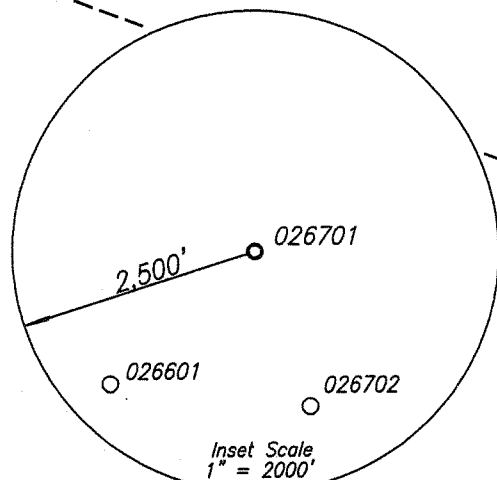
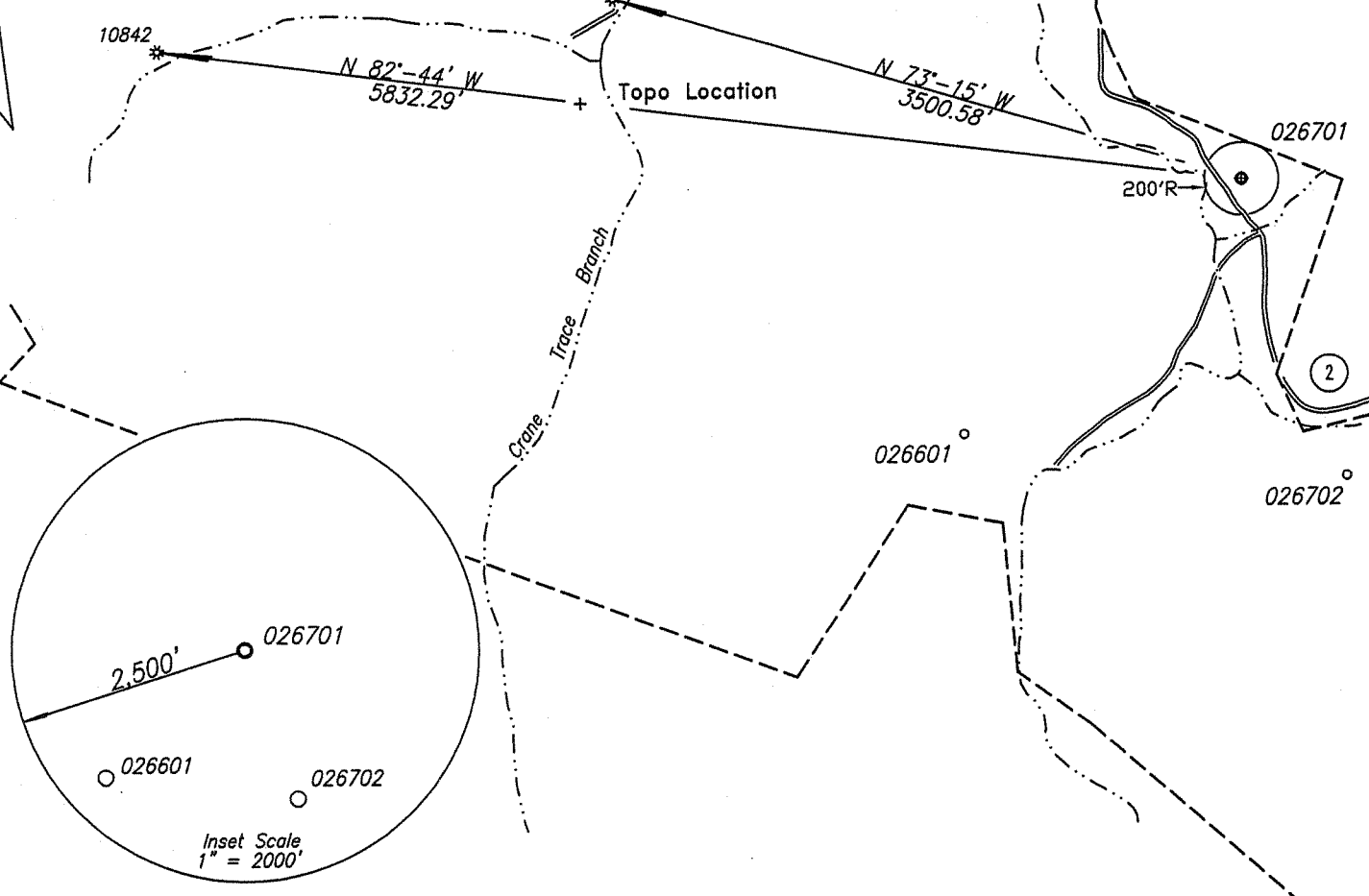
8,980'

LATITUDE 37° 25' 00"

LONGITUDE 81° 40' 00"

Coordinates for Well Location 026701
West Virginia State Plane South Zone, NAD27
N 145,584.38 E 1,797,347.96
Alawest, Inc.
N 43,985.24 E 110,792.38

Lease No. 405-0001  
 Alawest, Inc.  
 26,869.84 Acres  
 - surface, coal, oil, gas & CBM

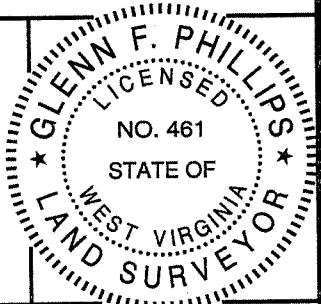


(+) DENOTES LOCATION OF WELL ON UNITED STATES TOPOGRAPHIC MAPS

FILE NO. \_\_\_\_\_  
 DRAWING NO. \_\_\_\_\_  
 SCALE 1" = 1,000'  
 MINIMUM DEGREE OF ACCURACY 1 : 2,500  
 PROVEN SOURCE OF ELEVATION NGS Sta. A 2 at Mercer County Airport

I THE UNDERSIGNED, HEREBY CERTIFY THAT THIS PLAT IS CORRECT TO THE BEST OF MY KNOWLEDGE AND BELIEF AND SHOWS ALL THE INFORMATION REQUIRED BY LAW AND THE REGULATIONS ISSUED AND PRESCRIBED BY THE DEPARTMENT OF ENVIRONMENTAL PROTECTION.

(SIGNED) Glenn F. Phillips  
 R.P.E. \_\_\_\_\_ L.L.S. 461



STATE OF WEST VIRGINIA  
 DEPARTMENT OF ENVIRONMENTAL PROTECTION  
 OIL AND GAS DIVISION



DATE May 31, 2006  
 OPERATOR'S WELL NO. 026701  
 API WELL NO. \_\_\_\_\_

WELL TYPE: OIL  GAS  LIQUID INJECTION  WASTE DISPOSAL   
 (IF "GAS,") PRODUCTION  STORAGE  DEEP  SHALLOW   
 LOCATION: ELEVATION 1,389.02 WATERSHED Clear Fork of the Tug Fork River  
 DISTRICT Big Creek COUNTY McDowell  
 QUADRANGLE Davey  
 SURFACE OWNER Alawest, Inc. ACREAGE 26,869.84  
 OIL & GAS ROYALTY OWNER Alawest, Inc. LEASE ACREAGE 26,869.84 Acres  
 LEASE NO. 405-0001

PROPOSED WORK: DRILL  CONVERT  DRILL DEEPER  REDRILL  FRACTURE OR STIMULATE  PLUG OFF OLD FORMATION  PERFORATE NEW FORMATION  OTHER PHYSICAL CHANGE IN WELL (SPECIFY) \_\_\_\_\_

PLUG AND ABANDON  CLEAN OUT AND REPLUG   
 TARGET FORMATION Pennsylvanian Coals ESTIMATED DEPTH 1,103'  
 WELL OPERATOR Dart Oil & Gas Corporation DESIGNATED AGENT Steven Hanley  
 ADDRESS 999 Executive Park Blvd., Suite 320 Kingsport, TN 37664 ADDRESS 707 Virginia St. E., Charleston, WV 25301

COUNTY NAME McDowell

PERMIT 2290C

6-6 (267

State of West Virginia  
Department of Environmental Protection  
Office of Oil and Gas

Well Operator's Report of Well Work

Farm name: Alawest, Inc. Operator Well No.: 026701

LOCATION: Elevation: 1389.02 Quadrangle: Davey

District: Big Creek County: McDowell  
Latitude: 8.980 Feet South of 37 Deg. 25 Min. 00 Sec.  
Longitude 6.920 Feet West of 81 Deg. 40 Min. 00 Sec.

Company Address:

<u>Dart Oil &amp; Gas Corporation</u> <u>999 Executive Park Blvd, Suite 320</u> <u>Kingsport, TN 37660</u>	<u>Casing &amp; Tubing</u>	<u>Used in drilling</u>	<u>Left in well</u>	<u>Cement fill up Cu. Ft.</u>
	<u>9 5/8"</u>	<u>62'</u>	<u>62'</u>	<u>Drive Pipe</u>
	<u>7"</u>	<u>156'</u>	<u>156'</u>	<u>to Surface</u>
<u>Agent: Jackie Lee Hatfield</u>	<u>4 1/2"</u>		<u>1059'</u>	<u>to Surface</u>
<u>Inspector: Barry Stollings</u>				
<u>Date Permit Issued: August 9, 2006</u>				
<u>Date Well Work Commenced: November 9, 2006</u>				
<u>Date Well Work Completed: December 14, 2006</u>				
<u>Verbal Plugging: N/A</u>				
<u>Date Permission granted on: N/A</u>				
<u>Rotary <input checked="" type="checkbox"/> Cable <input type="checkbox"/> Rig <input checked="" type="checkbox"/></u>				
<u>Total Depth (feet): 1110'</u>				
<u>Fresh Water Depth (ft.): 150'</u>				
<u>Salt Water Depth (ft.): None</u>				
<u>Is coal being mined in area (N/Y)? N</u>				
<u>Coal Depths (ft.):</u>				

OPEN FLOW DATA

Producing formation Pennsylvanian Coals Pay zone depth (ft) See back of WR-35  
Gas: Initial open flow N/A MCF/d Oil: Initial open flow      Bbl/d  
Final open flow      MCF/d Final open flow      Bbl/d  
Time of open flow between initial and final tests      Hours  
Static rock Pressure      psig (surface pressure) after      Hours

Second producing formation      Pay zone depth (ft)       
Gas: Initial open flow      MCF/d Oil: Initial open flow      Bbl/d  
Final open flow      MCF/d Final open flow      Bbl/d  
Time of open flow between initial and final tests      Hours  
Static rock Pressure      psig (surface pressure) after      Hours

NOTE: ON BACK OF THIS FORM PUT THE FOLLOWING: 1). DETAILS OF PERFORATED INTERVALS, FRACTURING OR STIMULATING, PHYSICAL CHANGE, ETC.).

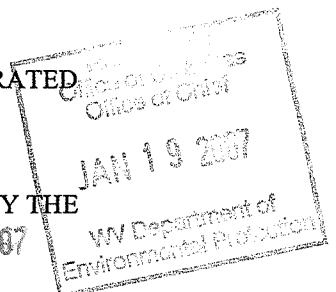
**SUPPLEMENTAL Page #2:** THE WELL LOG WHICH IS A SYSTEMATIC DETAILED GEOLOGICAL RECORD OF ALL FORMATIONS INCLUDING COAL ENCOUNTERED BY THE WELLBORE .

Signed:

*Ed Diminick*

By: Edward K. Diminick, District Manager

Date:     



JAN 02 2007

**State of West Virginia  
Department of Environmental Protection  
Office of Oil and Gas**

**Well Operator's Report of Well Work**

**API # 47-47-02290**

**Well No. WC-026701**

**Date: 12/20/06**

<b>Perforated Intervals</b>		<b>Stimulation</b>
<b>Poco#1</b>	<b>911.5-13.5' 8 holes</b>	<b>4,100# 20/40 Sd, 230 bbls water</b>
<b>Poco#3</b>	<b>792-95' 12 holes</b>	<b>6,500# 20/40 Sd, 345 bbls water</b>
<b>Poco#4</b>	<b>660.5-63' 10 holes</b>	<b>5,200# 20/40 Sd, 224 bbls water</b>
<b>Poco #7</b>	<b>497-500' 12 holes</b>	<b>6,500# 20/40 Sd, 282 bbls water</b>
<b>Poco#8</b>	<b>413.5-14.5' 4 holes</b>	<b>2,300# 20/40 Sd, 144 bbls water</b>
<b>Lo Fire Ck</b>	<b>334-336' 8 holes</b>	<b>Combined treatment of 9,300# 20/40# Sd, 321 bbls water</b>
<b>Lo Fire Ck</b>	<b>305.5-06.5' 4 holes</b>	
<b>Fire Ck</b>	<b>308-09' 4 holes</b>	

**WOR 0 2 2007**